

# CLAY COUNTY HISTORICAL SOCIETY



---

CCHS Newsletter    September/October 1994    Vol. XVII. No. 5

---

## Open House/Oct. 16 - Fall Tour/Oct 20

See Pages 5, 8, 9 and 11 for details.



A Northern  
Pacific  
Railroad

Steam Shovel takes a bite out of Clay County, about 1908. The railroad was digging the Gantz Reservoir, near the South Branch of the Buffalo River.

See story Pages 7-9.

Bud Romkey Collection

---

## From the President



By  
Chris D. Olson

The collections at the Clay County Museum provide an outstanding basis for explaining our local history. One item in that collection which recently has gained attention throughout the county is the 1936 Buffalo fire truck. The truck has been in a number of parades this summer and seems to turn heads whenever it goes out on a journey. In the last newsletter issue, an article described the renovation of the truck and its engine. The Society has contributed a substantial amount of funds to make the truck operable. In addition, many volunteer hours have been contributed. The truck is providing a great learning opportunity for local residents.

With its use, however, maintenance costs have also increased. The engine runs great, but items such as wiring, a storage tarp, and the brake system are current items which are needs. The Board of Directors have agreed that a separate maintenance fund shall be established to help pay for these costs. **Your contributions to this fund are needed!** Watch for the fireman's donation hat at county events or send your contribution directly to CCHS.

A open house featuring the fire truck will be held on Sunday, Oct. 16 from 2 to 5 p.m. (Presentation at 3 p.m.) at the Heritage Hjemkomst Interpretive Center's parking lot. I encourage all of you to attend and celebrate with us a grand part of the museum's collection.

## Memorials

Memorials have been received in the name of Norman Bjorndahl, former CCHS Board Member from

Ramona and Hank Kooren  
Margaret and Mel Ristvedt

## Genealogical Terms

LINEAL means ascending or descending in a direct line; COLLATERAL means descended from the same ancestor but not in a direct line of descent; ALLIED families are families which are usually related through marriage. An ANCESTRY begins with a single individual and traces back in time to include the male and female line of that person's ancestors. A GENEALOGY begins with a single ancestor and traces forward in time to include all descendants to the present. (From No. Central IL Gen. Soc. Newsletter, March, 1994)

## A CCHS "Wish List"

High school yearbooks (any year) from Moorhead, Ulen, Hitterdal, Hawley, Glyndon, Dilworth, Barnesville, Felton, Comstock, and MSTC High School.

### CLAY COUNTY HISTORICAL SOCIETY



202 1st Avenue North  
Box 301  
Moorhead, Minnesota 56560  
Phone 233-4604

#### BOARD OF DIRECTORS

Chris Olson, President, Moorhead  
Gary H. Olson, Vice Pres., Moorhead  
Ann Gytri, Secretary, Felton  
Robert Kennedy, Treasurer, Moorhead  
Kelly Aakre, Moorhead  
Kenny Fox, Hawley  
Larry Quam, Hawley  
Arlo Brown, Dilworth  
Carol Ekre, Hawley  
Dorothy Dodds, Moorhead  
Paul Harris, Moorhead  
Diane Meyer, Cnty. Rep., Moorhead

#### STAFF

Pam Burkhardt, Collections Manager  
Mark Peihl, Archivist  
Margaret Ristvedt, Office Manager

#### NEWSLETTER PRODUCTION

Margaret Ristvedt, Editor/Publisher  
Pam Burkhardt, Contributor  
Mark Peihl, Contributor

# History-mystery words and their meanings.

## Can You Use a Poultice for Nostalgia?

By Pam Burkhardt

*catarrh, la grippe/grippe:* Catarrh is an inflammation of any of the body's mucus membranes, but usually referring to those of the nose. La grippe, or just grippe, is a catarrhal disease resembling influenza. La grippe and grippe are not to be confused with . . .

*grip:* Example: He packed his grip and left.  
Explanation: Grip [in reference to a handle] was an informal term for small suitcase.

*fomentation, liniment, ointment/salve:* These are all external treatments. A fomentation is made from water to which medicine or herbs have been steeped. A cloth is soaked in this mixture, wrung out and placed on the afflicted part of the body. Liniment is an oily liquid meant to be rubbed on an afflicted area. Ointment or salve has a butter-like consistency and is also meant to be rubbed on. However, a word on butter - just because butter has the consistency of an ointment doesn't mean it is a medication and should not be used as a remedy!

*poultice/plaster:* More external treatments. A poultice is a moist, paste-like mixture spread on a cloth and placed on an inflamed or otherwise afflicted part of the body. It is usually heated before application and is replaced before it cools. A plaster is like a poultice with a thicker consistency.

*tonic, palliative, anodyne, cathartic:* These liquids are all internal medications. A tonic is supposed to increase strength in the [body's] system. A palliative relieves pain. An anodyne relieves pain and promotes sleep. A cathartic is a laxative.



### CATHARTIC PILLS.

This is the old fashioned sugar coated Cathartic Pill of the U. S. Pharmacopoeia, the

same as Ayer's, Brandreth's, Jaynes' and other much advertised pills. They act principally on the liver, and move the bowels gently without griping. These pills are carefully prepared from fresh vegetable extracts, and can be thoroughly relied upon. For this reason they are much superior to many others sold at double their price.

No. D1548 Box containing 25 pills, 10c; doz. . . . . 75c

*mortification, nostalgia:* Mortification refers to gangrene. Nostalgia was the medical term for homesickness!

Other medical terms you might run into:

*quinsy:* tonsillitis

*lumbago:* rheumatism or pain in the lower back

*apoplexy:* stroke

*dyspepsia:* indigestion

*dropsy:* an abnormal accumulation of fluid in the body

*croup:* an ailment affecting the throat which is marked by a heavy cough and difficult breathing

[Note: Many of the above receipts/recipes (see last month's issue) and medical definitions were taken from The People's Home Library published in 1917. We do not recommend the use of any of them.]

More history-mystery words will appear in future issues.

## Dr. Hammond's Tar Expectorant.

### THE GREAT CONSUMPTION CURE.

More cases of Consumption have been cured by the timely use of Dr. Hammond's Tar Expectorant than by all other remedies combined.

For the cure of Colds, Coughs, Croup, Influenza, Bronchitis, Quinsy, Laryngitis, Hoarseness, Sore Throat, Night Sweats, Catarrh and for the immediate relief of Consumptive patients.

DR. HAMMOND'S TAR EXPECTORANT is the most wonderful remedy ever offered to the public. It wonderfully increases the power and flexibility of the voice, strengthens weak lungs, allays pulmonary irritation and affords the most effectual relief for Whooping Cough and even for Consumption in its advanced stages. It is especially beneficial in those diseases which are too often regarded as simply annoying, such as common colds and coughs, but which are really dangerous in their tendency and demand prompt and active treatment. For the more serious forms of Throat and Lung Troubles its value can not be overestimated to anyone worn out with constant coughing and loss of sleep.

DR. HAMMOND'S TAR EXPECTORANT is a blessing, as it gives immediate relief, and sweet rest follows.

WE GUARANTEE that every case of pulmonary disease, not already beyond the reach of human aid, can be relieved and cured by being promptly treated with Dr. Hammond's Tar Expectorant. DELAYS ARE DANGEROUS.

Keep a bottle always in the house and use it promptly whenever the first symptom of a cough shows itself. Both suffering and money will be saved. PRICE WAS NEVER SO LOW BEFORE. It is retailed at 75 cents per bottle when sold by dealers.

No. D1548 Price per bottle . . . . . 30c; per dozen . . . . . \$3.00





## Outreach Displays

	Opens	Closes
Hitterdal Senior Center	Sept. 21	Nov. 16
Ulen-Hitterdal High School	Sept. 7	Nov. 16
Viking Manor, Ulen	Sept. 21	Nov. 16
Hawley Public Library	Sept. 21	Nov. 18
Glyndon Community Center	Sept. 22	Nov. 18
Moorhead Public Library	Sept. 22	Nov. 18

IN MY MERRY OLDSMOBILE will be at the Hitterdal Senior Center with a wooden license plate, road maps and a wooden gas gauge.

IN OTHER WORDS will be featured at the Ulen-Hitterdal High School matching words to artifacts. Example: The word "egg" refers to a darning egg used to mend stockings.

25175 Egg Darners,  
with handle, dark finish.  
Each.....\$0.04  
Per doz..... 0.35



Viking Manor will open OUT AGAIN, IN AGAIN - a display of old items which have come back into use such as button covers and lace collars.

A display of building components and accessories will be featured in THIS OLD HOUSE at the Hawley Public Library.

THEN & NOW at the Glyndon Community Center will show old photographs displayed next to a current photo taken in the same place.

Moorhead Public Library will put its BEST FOOT FORWARD with foot related items such as corn remedies, hosiery, a stocking knitting machine and a variety of shoes.

## Donations

A great big thank you to the following individuals and groups who made monetary contributions to CCHS in July and August.

Glenn LeJarnd, Sioux City, Iowa  
Christine L. Krueger, Port Orchard, Washington  
Gjevre, McLarnan, Hannaher, Vaa,  
Skatvold, & McLarnan, Moorhead  
Gran WELCA, Rollag

## Artifacts & Donors

July/August 1994

### DONORS INCLUDE:

Moorhead: Don Jahr, Johaneson Melby Estate,  
Audrey Jones, Thornley Wells, Helen  
Hedelund, Solveig Mead & Ellen  
Wright  
Barnesville: Dorothy Garven  
Hawley: Mercedes Roos, Margaret Ristvedt  
Bloomington, MN: Charleen Weidenbach  
Fargo, ND: Leland Delger, The Bernhardson  
Family, Gothard Knutson  
Corvallis, OR: John and Peggy Brophy & Family  
[formerly of Fargo]:

### ARTIFACTS INCLUDE:

The Bernhardson Saga 1869-1994; booklet, 25th Anniversary St. James United Church of Christ, Barnesville, 1948-1973 and dedication program May 13, 1951; booklet, 60th Anniversary St. Paul Evangelical & Reformed Church, Barnesville; cookbook, 60th Anniversary Barnesville Assembly of God 1933-1993; 1st edition of the *Reliable Cook Book* published in 1926 by Trinity Church, Moorhead; souvenir booklets for City of Moorhead and the Moorhead Post Office; (2) photos of the Huntoon home, Moorhead [currently the Concordia College President's residence]; 1945 map of Moorhead; (4 vol.) set *History of Minnesota* 1969; (cassette tape) copy of recorded interview 1983 "Visit with Obert Gregerson" aged 96; family collection of Advent calendars; letter of proclamation granting the (Thornley) Wells family a coat of arms; woolen shawl worn by Ingeborg (Roholt) Studlien who came from Telemark, Norway in 1883 and settled near Kragnes; Hawley American Legion Auxiliary [President's] Scrapbook 1982-1984; 1940s Junior Knapp Electric Questioner game; 1953 Argus C3 35mm camera; TI 99-4A Texas Instrument [early home] computer with cassette tapes; 40mm AA gun, WWII era wooden toy; pair of home-made shoe trees; "National" bicycle; horsehide robe originally from Silver Lake Farm, Hawley ca 1900.

No. 23783 The  
latest and most sty-  
lish collar out. Has  
a new style square  
yoke, bands of satin  
and fine oriental lace,  
edged with wide  
handsome oriental  
lace, butter color.  
This is a regular \$1.50  
collar.  
Each.....81c



*You are cordially invited to an*  
**Open House**

*from 2 to 5 p.m.  
on Sunday, Oct. 16  
at the*

**CLAY COUNTY  
MUSEUM**

202 1st Ave. N., Moorhead, MN



featuring the recently repaired

**\* 1936 Buffalo Fire Truck**

**\* A new exhibit "Drawing With Light"  
and**

**\* A Special Fire Memorabilia Display**

Refreshments will be served.

**There will be a short program at 3 p.m.**

# The North Dakota Retriever Club

While driving around Clay County our staff members sometimes come across places or things that pique our interest. Usually there's a story behind it; sometimes it's an interesting one. One such place is along Highway 10 between Dilworth and Glyndon. Just east of the South Branch of the Buffalo River is the home of the North Dakota Retriever Club. Ok, so what's the NORTH DAKOTA Retriever Club doing eight miles inside Minnesota? Well, the answer concerns the needs of steam engines, a crowded railroad and Clay County's youngest town.

After the Northern Pacific Railroad crossed the Red River into Dakota Territory in 1872, they established Fargo as a division point. Early steam powered locomotives had to be serviced and filled with water

and coal about every 100 miles. At division points, the locomotives were driven into a round house, serviced and then turned around on a turn table to pull another train back the other direction. Other area division points included Staples, Minnesota (100 miles east) and Jamestown, North Dakota (100 miles west).

The NP built Fargo's roundhouse and carshops just west of 16th Street, then nearly a mile west of downtown. They sat on the eastern bank of Long Lake, a narrow, north-south-lying water-filled slough. Water for the steam locomotives, power plant and other needs was readily available there. However, the site had other problems. Hemmed in by the lake on one side and encroaching development on the other,

the NP had little room to expand its facilities. In 1906 the railroad decided to move their division point out of Fargo to a tiny siding east of Moorhead named Dilworth. The new village grew to several hundred almost overnight. Today, it's the second largest city in Clay County.

(Long Lake has long since been drained. It's now Cass County Drain Number 3 and runs through several Fargo city parks. The Fargo roundhouse still stands on 1st Avenue North and Classic Roadsters

occupies the NP's old car repair shops on Main Avenue.)

Faced with a pressing need for water at the new Dilworth site, the NP planned to dig a 2000 by 600 foot reservoir just west of the South Branch of



GET SET - John Hall, Moorhead dog trainer, works a dog in North Dakota Retriever trails.

Red River Scene, Thursday, April 30, 1953

the Buffalo River, fill it with river water and pipe the water the 2 1/2 miles into town.

All these changes occurred during a major Northern Pacific building campaign through this part of Minnesota. Other projects included laying a second set of tracks from Staples to Buffalo, North Dakota and building the Stockwood Fill - the high railroad grade east of Glyndon. The fill serves as a ramp to ease trains up over the beaches of ancient Glacial Lake Agassiz. To raise the grade, the NP built an amazing 4 3/4 mile long wooden trestle and dumped dirt from its top to create the fill, burying the trestle in the process. The Stockwood Fill taught the railroad engineers some bitter lessons about the problems of building large,



# in Clay County??

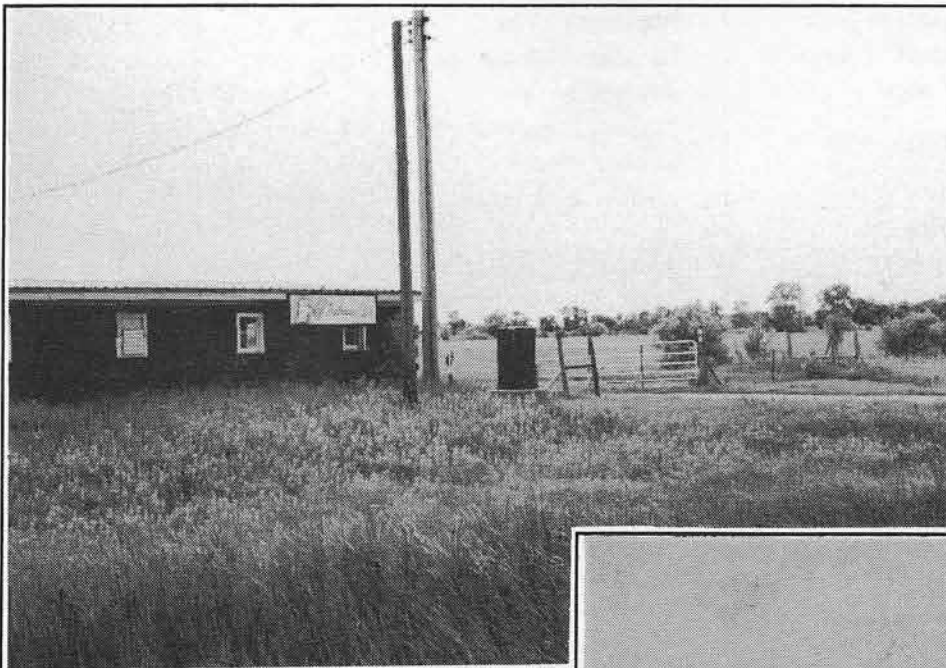
heavy objects on our soft, unstable, former lake bottom soil. Parts of the trestle sank in pockets of water-saturated sand hidden below the top soil. The fill itself sank from its own weight squishing up the ground on either side.

The NP faced similar problems at their man-made lake (named the Gantz Reservoir for a nearby railroad

leaky lake, connected it with the new reservoir via pipes running under the river and installed pumps, a water tower and a water softening plant on the site. NP locomotives chuffed along using water from the reservoirs as late as the 1950s when the railroad switched to diesel engines.

Meanwhile, over in North Dakota, hunting enthusiasts searched for a place to train and test their dogs. In the 1930s some local retriever owners, most from Fargo, began meeting at a slough near Harwood and a railroad reservoir near Magnolia, North Dakota, 10 miles west of Casselton. Eventually, they incorporated with the state of North Dakota as the North Dakota Retriever Club and began holding American Kennel Club licensed field trials for pure-bred dogs.

The AKC field trials tested the dog's behavior and ability to find and retrieve both upland game and



The North Dakota Retriever Club has been a fixture along Clay County's Highway 10 for 45 years.

CCHS Photo



**RETRIEVE, BOY** - A dog at Sunday's trials jumps into the water to retrieve bird on island in background.

Red River Scene, Thursday, April 30, 1953

siding). Heavy steam shovels sank in the soft, clay bottom. Workers found a long, narrow layer of water-saturated sand running across the east end of the reservoir. River water pumped into the lake ran out through this layer as quickly as it was pumped in. Like a bucket with a hole in its side, the reservoir wouldn't hold water above the sand layer.

Newspaper accounts indicate that the railroad planned to line the Gantz Reservoir with concrete to plug the leak. In the mean time, the water-desperate railroad dug wells and a second 600 by 2000 foot lake on the east side of the river. This hole proved more successful. By 1909 the railroad had plugged their

water fowl. The Harwood and Magnolia locations provided both the prairie and pond habitats required for the trials but members wished for a site closer to home.

(Continued on Page 8)

# Fall Tour to Historic Fort Snelling and Sibley House set for Thursday, Oct. 20

Clay County Historical Society and Otter Tail County Historical Society in Fergus Falls are co-sponsoring a tour to Historic Fort Snelling and the Sibley House on Thursday, Oct. 20.

Fort Snelling, begun in 1819 and completed in 1825, is situated on the confluence of the Minnesota and Mississippi Rivers. The site provided a vantage point for overseeing travel and commerce in the early days of the Minnesota Territory. Today's Fort depicts frontier life in about 1827.

The Sibley House was built in 1835 by Henry Hastings Sibley, a prominent fur trader with the Dakota and Ojibway Indian Tribes. Sibley later became a Territorial Delegate to Congress and eventually the first Governor of the State of Minnesota.

The Sibley House, with a large collection of 19th century Dakota and Ojibway artifacts was first preserved in 1910. Since that time the Minnesota Society of the Daughters of the American Revolution (DAR) have kept the house open to the public.

For more information and/or to make reservations call CCHS at 233-4604.

The rosemaling design to the right was done by Karen Myran of Hawley for CCHS's newest promotional tool, a wonderful bookmark. The Scandinavian design, donated by Ms. Myran, is reproduced in deep blue on powder blue stock.

The message on the back defines both its immediate purpose and the long term goal of the promotional piece. Ask for your complimentary bookmark at the CCHS Museum and Archives.



## ND Retriever Club

(Continued from Page 7)

In the mid-1940s the club began renting pasture land along Highway 10, east of the South Branch of the Buffalo River from Glyndon farmer August Fischer. The railroad leased them the use of the adjacent Gantz Reservoir. The site proved ideal. In 1949, club members contributed money and bought Fischer's land. They retained their North Dakota incorporation and name and simply moved their sign to the new Clay County home.

Moorhead member John Hall and others replaced the old railroad car which had served as a clubhouse with the facility presently on the site. The club has been quite active. In the late 1940s, Moorhead member Cliff Overvold's golden retriever Royal Peter Golden

Boy gained a national reputation for field trial performances. In 1967 the club bought another Clay County property, a slough just east of Glyndon's Riverside Cemetery. Today the club has about 85 or 90 members and holds trials two or three times a year. Almost all of the dogs now are Labrador retrievers.

The railroad no longer needs the Gantz Reservoir water for steam locomotives. The once leaky west reservoir is now dry and choked with trees, but on the east pond, lovingly trained dogs will be tracking downed pheasants and ducks for years to come.



# 1936 Buffalo fire truck featured at Oct. 16 CCHS Open House.

Check out the 1936 Buffalo fire truck at Clay County Historical Society Fall Open House on Sunday, Oct. 16 from 2 to 5 p.m. The Buffalo, considered a Cadillac of fire trucks, will be on display in the parking lot of the Hjemkomst Center, 202 1st Ave. N., Moorhead. County Commissioner and CCHS Board Member Diane Meyer will make a special presentation of the truck at 3 p.m. Two Moorhead firemen, Gerry Shawstad and Mike Sigdestad, will be recognized for their outstanding dedication to the preservation of the truck.



On October 14, 1936, a photo of the brand new Moorhead Fire Department Buffalo "pumper" appeared in the Fargo Forum. (See the July/August CCHS Newsletter.) Less than two weeks later the Buffalo fought a major fire at 5th Street and Center Avenue. (See photo above.) Evanson Grocery and Moorhead Hardware were gutted by the fire, but firemen managed to save the adjacent stores, Neubarth's Jewelry and the L. Milo Matson Fur Store.

Inside the museum there will be a special display of fire related artifacts in addition to the permanent exhibits and a new temporary exhibit "Drawing With Light" Photography in Clay County. This exhibit examines how people have used light and chemistry to produce pictures for the last 150 years. Featured are old photographic processes, our earliest Clay County photograph and the virtual reality of the 1890s - stereoscopes.

According to the Moorhead Daily News a "number of amateur photographers and numerous motion picture machines" were in evidence at the fire scene. If anyone has any knowledge of these photos/movies CCHS would appreciate seeing them. Give us a call at 233-4604.

Forum Publishing Collection Photo

Refreshments will be served. Stop in, view the fire truck and exhibits and have a bite to eat. If you aren't already a member of CCHS, consider joining the historical society or asking a friend to join. Your membership in CCHS is an inexpensive and easy way to put your own mark on history. By joining CCHS for just \$15 a year you can help us preserve Clay County's heritage for future generations. We look forward to seeing you on October 16.

## Correction:

The endnotes for the Deming/Huntoon story (Part II) in the July/August 1994 CCHS Newsletter were transposed from an earlier story. The CCHS Newsletter editor regrets the error and any confusion it may have caused. Here are the correct endnotes.

1. Klooze, N.W., "Obituary-Biography of Mrs. Lew Huntoon," First Congregational UCC archives, Moorhead, MN
2. Moorhead Weekly News, 14 May 1885, 8
3. Moorhead Weekly News, 10 September 1885, 8
4. Johnson, Glenn E., Here-There-Everywhere in Clay County, Minnesota (Hawley Herald, Hawley, Minnesota 1972) 93
5. Moorhead Weekly News, 31 March 1887
6. Moorhead Weekly News, 28 December 1893
7. Red River Valley News, 15 March 1888, 5 and 19 April, 1888, 5
8. "In Memory of Hon Lew A. Huntoon," memorial pamphlet, State Normal School, 5 June 1913 (Clay County Historical Society archives)
9. Moorhead Weekly News, 28 December 1893
10. Moorhead Weekly News, 23 May 1913
11. Klooze, N.W., "Obituary..."

## CLAY COUNTY MUSEUM Presents

# "Drawing With Light:

## Photography in Clay County"

"Drawing With Light...." examines how people have used light and chemistry to produce pictures for the last 150 years. Featured are old photographic processes, our earliest Clay County photograph and the virtual reality of the 1890s - stereoscopes.

The exhibit features a Kewpie Box Kamera with direction booklet and the notation that it was a Christmas gift in 1922.

The PERMANENT EXHIBIT includes unique characterizations of one facet of the history of towns in the county. Together they form a chapter in the overall history of Clay County.

**Kewpie Kameras**  
Get the Pictures

\$2.25 to \$4.95

Low Priced—Easy to Use

REAL CAMERAS—Reliable, Sturdy in Construction and Surprisingly Low in Price. That's what those who have bought and used these little KEWPIE KAMERAS.

That a camera be reliable is perhaps the most important consideration—and you can always depend on a KEWPIE to get the picture. That is why it has been such a favorite with consumers and the surprisingly large number of owners of high priced cameras who have also bought them.

KEWPIES need not be focused. They are "fixed focus" cameras. Just push the lever and the picture is taken.

Simple operation is suggested with the simple instruction book. Each has a button to push it will be used. The button is pushed down and the picture is taken.

Perfect with your stereoscope. Look at them, or make of them the subjects of pictures. They are perfect for the camera. They are perfect for the camera. They are perfect for the camera.

Model dimensions of this fixed focus camera with great style. Small, sturdy camera with great style. Small, sturdy camera with great style. Small, sturdy camera with great style.

No. 1 and No. 2A. Kewpie cameras are available with your choice of camera. No. 1 and No. 2A. Kewpie cameras are available with your choice of camera. No. 1 and No. 2A. Kewpie cameras are available with your choice of camera.

Discontinued instruction book and Camera. Discontinued instruction book and Camera. Discontinued instruction book and Camera. Discontinued instruction book and Camera.

**PRICES**

Model	Color	Price	Price	Price	Price
No. 1	Black	\$2.25	\$2.25	\$2.25	\$2.25
No. 2	Black	\$2.25	\$2.25	\$2.25	\$2.25
No. 2A	Black	\$2.25	\$2.25	\$2.25	\$2.25
No. 3	Black	\$2.25	\$2.25	\$2.25	\$2.25
No. 4	Black	\$2.25	\$2.25	\$2.25	\$2.25
No. 5	Black	\$2.25	\$2.25	\$2.25	\$2.25
No. 6	Black	\$2.25	\$2.25	\$2.25	\$2.25
No. 7	Black	\$2.25	\$2.25	\$2.25	\$2.25
No. 8	Black	\$2.25	\$2.25	\$2.25	\$2.25
No. 9	Black	\$2.25	\$2.25	\$2.25	\$2.25
No. 10	Black	\$2.25	\$2.25	\$2.25	\$2.25
No. 11	Black	\$2.25	\$2.25	\$2.25	\$2.25
No. 12	Black	\$2.25	\$2.25	\$2.25	\$2.25
No. 13	Black	\$2.25	\$2.25	\$2.25	\$2.25
No. 14	Black	\$2.25	\$2.25	\$2.25	\$2.25
No. 15	Black	\$2.25	\$2.25	\$2.25	\$2.25
No. 16	Black	\$2.25	\$2.25	\$2.25	\$2.25
No. 17	Black	\$2.25	\$2.25	\$2.25	\$2.25
No. 18	Black	\$2.25	\$2.25	\$2.25	\$2.25
No. 19	Black	\$2.25	\$2.25	\$2.25	\$2.25
No. 20	Black	\$2.25	\$2.25	\$2.25	\$2.25
No. 21	Black	\$2.25	\$2.25	\$2.25	\$2.25
No. 22	Black	\$2.25	\$2.25	\$2.25	\$2.25
No. 23	Black	\$2.25	\$2.25	\$2.25	\$2.25
No. 24	Black	\$2.25	\$2.25	\$2.25	\$2.25
No. 25	Black	\$2.25	\$2.25	\$2.25	\$2.25
No. 26	Black	\$2.25	\$2.25	\$2.25	\$2.25
No. 27	Black	\$2.25	\$2.25	\$2.25	\$2.25
No. 28	Black	\$2.25	\$2.25	\$2.25	\$2.25
No. 29	Black	\$2.25	\$2.25	\$2.25	\$2.25
No. 30	Black	\$2.25	\$2.25	\$2.25	\$2.25
No. 31	Black	\$2.25	\$2.25	\$2.25	\$2.25
No. 32	Black	\$2.25	\$2.25	\$2.25	\$2.25
No. 33	Black	\$2.25	\$2.25	\$2.25	\$2.25
No. 34	Black	\$2.25	\$2.25	\$2.25	\$2.25
No. 35	Black	\$2.25	\$2.25	\$2.25	\$2.25
No. 36	Black	\$2.25	\$2.25	\$2.25	\$2.25
No. 37	Black	\$2.25	\$2.25	\$2.25	\$2.25
No. 38	Black	\$2.25	\$2.25	\$2.25	\$2.25
No. 39	Black	\$2.25	\$2.25	\$2.25	\$2.25
No. 40	Black	\$2.25	\$2.25	\$2.25	\$2.25
No. 41	Black	\$2.25	\$2.25	\$2.25	\$2.25
No. 42	Black	\$2.25	\$2.25	\$2.25	\$2.25
No. 43	Black	\$2.25	\$2.25	\$2.25	\$2.25
No. 44	Black	\$2.25	\$2.25	\$2.25	\$2.25
No. 45	Black	\$2.25	\$2.25	\$2.25	\$2.25
No. 46	Black	\$2.25	\$2.25	\$2.25	\$2.25
No. 47	Black	\$2.25	\$2.25	\$2.25	\$2.25
No. 48	Black	\$2.25	\$2.25	\$2.25	\$2.25
No. 49	Black	\$2.25	\$2.25	\$2.25	\$2.25
No. 50	Black	\$2.25	\$2.25	\$2.25	\$2.25
No. 51	Black	\$2.25	\$2.25	\$2.25	\$2.25
No. 52	Black	\$2.25	\$2.25	\$2.25	\$2.25
No. 53	Black	\$2.25	\$2.25	\$2.25	\$2.25
No. 54	Black	\$2.25	\$2.25	\$2.25	\$2.25
No. 55	Black	\$2.25	\$2.25	\$2.25	\$2.25
No. 56	Black	\$2.25	\$2.25	\$2.25	\$2.25
No. 57	Black	\$2.25	\$2.25	\$2.25	\$2.25
No. 58	Black	\$2.25	\$2.25	\$2.25	\$2.25
No. 59	Black	\$2.25	\$2.25	\$2.25	\$2.25
No. 60	Black	\$2.25	\$2.25	\$2.25	\$2.25
No. 61	Black	\$2.25	\$2.25	\$2.25	\$2.25
No. 62	Black	\$2.25	\$2.25	\$2.25	\$2.25
No. 63	Black	\$2.25	\$2.25	\$2.25	\$2.25
No. 64	Black	\$2.25	\$2.25	\$2.25	\$2.25
No. 65	Black	\$2.25	\$2.25	\$2.25	\$2.25
No. 66	Black	\$2.25	\$2.25	\$2.25	\$2.25
No. 67	Black	\$2.25	\$2.25	\$2.25	\$2.25
No. 68	Black	\$2.25	\$2.25	\$2.25	\$2.25
No. 69	Black	\$2.25	\$2.25	\$2.25	\$2.25
No. 70	Black	\$2.25	\$2.25	\$2.25	\$2.25
No. 71	Black	\$2.25	\$2.25	\$2.25	\$2.25
No. 72	Black	\$2.25	\$2.25	\$2.25	\$2.25
No. 73	Black	\$2.25	\$2.25	\$2.25	\$2.25
No. 74	Black	\$2.25	\$2.25	\$2.25	\$2.25
No. 75	Black	\$2.25	\$2.25	\$2.25	\$2.25
No. 76	Black	\$2.25	\$2.25	\$2.25	\$2.25
No. 77	Black	\$2.25	\$2.25	\$2.25	\$2.25
No. 78	Black	\$2.25	\$2.25	\$2.25	\$2.25
No. 79	Black	\$2.25	\$2.25	\$2.25	\$2.25
No. 80	Black	\$2.25	\$2.25	\$2.25	\$2.25
No. 81	Black	\$2.25	\$2.25	\$2.25	\$2.25
No. 82	Black	\$2.25	\$2.25	\$2.25	\$2.25
No. 83	Black	\$2.25	\$2.25	\$2.25	\$2.25
No. 84	Black	\$2.25	\$2.25	\$2.25	\$2.25
No. 85	Black	\$2.25	\$2.25	\$2.25	\$2.25
No. 86	Black	\$2.25	\$2.25	\$2.25	\$2.25
No. 87	Black	\$2.25	\$2.25	\$2.25	\$2.25
No. 88	Black	\$2.25	\$2.25	\$2.25	\$2.25
No. 89	Black	\$2.25	\$2.25	\$2.25	\$2.25
No. 90	Black	\$2.25	\$2.25	\$2.25	\$2.25
No. 91	Black	\$2.25	\$2.25	\$2.25	\$2.25
No. 92	Black	\$2.25	\$2.25	\$2.25	\$2.25
No. 93	Black	\$2.25	\$2.25	\$2.25	\$2.25
No. 94	Black	\$2.25	\$2.25	\$2.25	\$2.25
No. 95	Black	\$2.25	\$2.25	\$2.25	\$2.25
No. 96	Black	\$2.25	\$2.25	\$2.25	\$2.25
No. 97	Black	\$2.25	\$2.25	\$2.25	\$2.25
No. 98	Black	\$2.25	\$2.25	\$2.25	\$2.25
No. 99	Black	\$2.25	\$2.25	\$2.25	\$2.25
No. 100	Black	\$2.25	\$2.25	\$2.25	\$2.25

**No Focusing - No Guessing at Distances**

The illustration is from a reprint of a 1923 catalog.

Hours are: 9-5 Mon.-Sat., 9-9 Thurs. and 12-5 Sun.  
Lower level of Hjemkomst Center, 202 1st Ave. N., Moorhead

## CCHS Memberships - New and Renewals

### July/August 1994

CCHS extends a very special thank you to the following individuals who have renewed their membership for another year.

Allen County Pub. Library, Ind.  
James Antonen, Moorhead  
Tim McLarnan, Moorhead  
Janet C. Gorman, Maryland  
Arvid Thompson, Barnesville  
Aldrich & Meredith Bloomquist, Mhd  
Lynn M. Slater, Fargo  
Gjevre, McLarnan, Hannaher, Mhd  
Evalyn M. Hansen, Moorhead  
Owen & Fern Voxland, Moorhead  
Bev Woodward, Fargo

Ruth Franzen, Fargo  
Mrs. Helen Glawe, Barnesville  
Town & Country Flowers, Moorhead  
Kelly & Marge Aakre, Moorhead  
Collin Peterson, Wash. DC  
Pearl Grover, Moorhead  
Twin Valley/Ulen Telephone Company, Twin Valley  
J. Donald & Naomi Rice, Mhd  
Thelma A Gylte, Halstad  
Sara Lee Cook, St. Paul  
H. Allen Ohrt, Fargo  
Clarence Bergquist, Oregon  
June Dobervich, Fargo  
Dorothy Garven, Calif.  
Edward Gudmundson, Moorhead  
Jerry Hermann, Georgetown

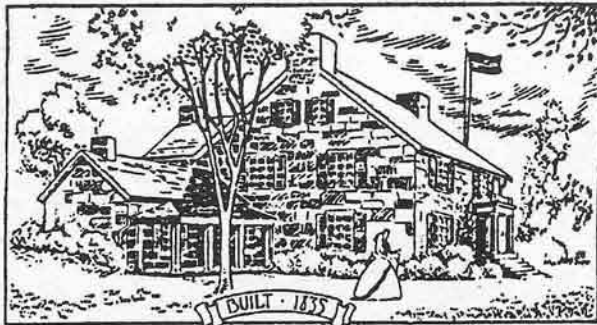
Earl Ingebretsen, Felton  
Cecil I& Eleanor Johnson, Moorhead  
Lawrence L. Kava, Barnesville  
Viola S. Mallory, Calif.  
Aubrey & Catherine Thomas, Moorhead  
Vincent Dolva, Hawley  
Wm. and Audrey Jones, Moorhead  
Richard Melarvie, Moorhead

CCHS welcomes the following new members:

William T. Fay, Florida  
Phillip Prindle, Calif.

# Fall Tour to Historic Fort Snelling the Sibley House and the Minnesota History Center

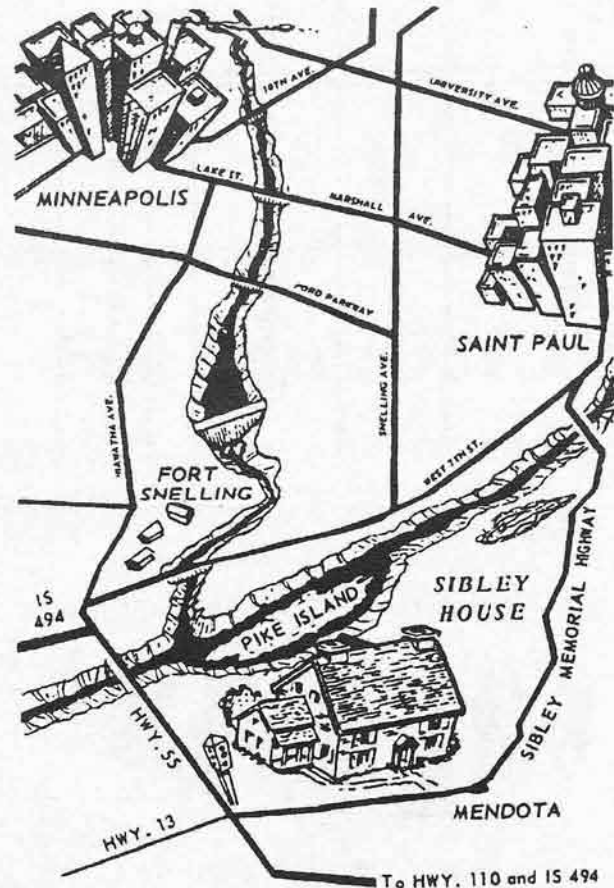
on  
**Thursday,  
Oct. 20**



*Sibley House First Stone Dwelling in Minnesota Mendota Minn.*

**\$35** - CCHS Members  
includes bus fare,  
buffet supper,  
and all museum fees

**\$50** - non members  
(Individual Memberships \$15)



**Registration  
Deadline - Oct. 14**

**For more information and/or to register  
Call 233-4604**

Cosponsored by Clay County & Otter Tail County Historical Societies



### CCHS - 1994 MEMBERSHIP INFORMATION

I would like to begin/renew my membership in the Clay County Historical Society. Please enter my membership in the category I have checked below:

- ☐ INDIVIDUAL      \$15.00
- ☐ FAMILY            \$35.00

### CCHS MEMBERSHIP BENEFITS

- \*\* FREE Admission to the Center
- \*\* Bi-Monthly Newsletter
- \*\* 25% Discount on Photo Reproductions
- \*\* 10% Discount on Acid-Free Materials
- \*\* Voting Privileges
- \*\* Invitation to the Annual Meeting/Dinner and all CCHS Events

NAME: \_\_\_\_\_

ADDRESS: \_\_\_\_\_

PHONE: \_\_\_\_\_

Family memberships, please list family members.

\_\_\_\_\_  
Husband

\_\_\_\_\_  
Wife

\_\_\_\_\_  
Children (under the age of 18)

Return to: Clay County Historical Society  
P.O. Box 501  
Moorhead, MN 56561

(218) 233-4604

NON PROFIT  
ORGANIZATION  
U.S. POSTAGE  
PAID  
PERMIT NO. 494  
MOORHEAD, MN

CLAY COUNTY HISTORICAL SOCIETY



202 1ST AVENUE NORTH

BOX 501

MOORHEAD, MINNESOTA 56560

Address Correction Requested