

Clay County Historical Society

Clay County Historical Society Newsletter September/October 2005

Volume XXVIII No. 5

In this issue:

- 1905 Souvenir Book of Moorhead to be reprinted, p. 3
- Softball in Clay County, p. 5
- Fallen Heroes of Clay County, p. 8
- Hurricane Katrina Emergency Relief Act Opportunities, p. 15



What are these girls wearing? Find out in the "Corsets & Crinolines" program: more info on page 3.

President's Column

By Lisa Vedaa, Director

Normally our board president does write this column, but I am happy to be a guest this issue.

Forgive the cliché, but it seems like just a month ago we were looking at the year ahead and planning for spring and summer activities. It seems too soon to look back and count all that has happened this year.



We began the year by hosting the traveling *Here Comes the Bride* exhibit and in February our Collections Manager Pam Burkhardt held a class on creating good displays on a tight budget. In April we opened our new exhibit *Inside, Outside, Upside Down* and had a record attendance at our Annual Meeting, where we honored Alvera Murch and Pam Burkhardt for their long service to the society. Summer activities included our annual Open House at the Bergquist Cabin with another record attendance, and our displays in the Grand Stand and School House at the Clay County Fair in Barnesville.

We had a very successful History Tour to Duluth this fall, and good attendance at another open house at the Bergquist Cabin just this weekend, held to meet our neighbors in that area. Staff have been busy amidst all these activities, doing paperwork to accept donations for the society's collection, helping researchers, producing newsletters, and presenting programs for school groups and community clubs. Of course, these activities and events come with administrative expenses and operating costs.

This time of year, many nonprofits conduct annual fund drives to garner funds for general operating support for their organizations. These are largely successful because some people are beginning to think about their tax return and because the giving holiday spirit is beginning to come upon us with Thanksgiving and various annual religious and cultural celebrations in the forefront.

For many years, the Clay County Historical Society has not conducted an annual fund drive, instead depending on our support from the county, memberships and donations received throughout the year. Recent years have seen a strain on government funding of non-mandated services, however, and while our membership support has remained steady with a slight increase, the expenses of trying to continue to provide quality programming, research services, and exhibits continue to rise. Last year we sent out our first plea to you, our members, for an annual gift, and are very grateful for the response we received.

This year we will again send you a letter asking for an annual gift donation. We appreciate your membership support and want to thank you in advance for any thought you might give to an additional donation to help us continue to preserve the history of Clay County.



CLAY COUNTY HISTORICAL SOCIETY

Hjemkomst Center, 202 1st Avenue North
PO Box 501, Moorhead, MN 56561-0501
Phone: 218-299-5520/Fax: 218-299-5525
www.info.co.clay.mn.us/history

BOARD OF DIRECTORS

Dale White, President, Moorhead
Rose Bergan, Vice President, Hawley
Alvin Swanson, Treasurer, Moorhead
John Elton, Secretary, Hawley
Ben Brunsvold, County Rep., Moorhead
Carolyn Barden, Moorhead
Rodney Erickson, Moorhead
Darren Leno, Moorhead
Gene Prim, Barnesville
Pearl Quinnild, Barnesville
Ron Ulven, Hawley

STAFF

Lisa Vedaa, Director
lisa.vedaa@ci.moorhead.mn.us
Pam Burkhardt, Collections Manager
pam.burkhardt@ci.moorhead.mn.us
Mark Peihl, Archivist
mark.peihl@ci.moorhead.mn.us
Janet Nelson, Volunteer Coordinator

NEWSLETTER PRODUCTION

Lisa Vedaa, Editor
Pam Burkhardt, Contributor
Mark Peihl, Contributor

Donations

Thanks to these special donors for their contributions to Clay County Historical Society!

Donation for PastPerfect Museum Collections Management Software

Kiwanis Club of Lake Agassiz

In Honor of Ann Gytri

Roland and Beth Dille, Moorhead

Endowment Fund

Jim Johnson, Moorhead

Program by Mark Peihl

Hunter Friendship Club, Hunter, ND

1905-1906 Souvenir Book of Moorhead to be reprinted for sale at CCHS Museum

CCHS is pleased to announce we will be reprinting a souvenir book from the society's collections for sale in the historical society office. The book should be available by Thanksgiving of this year.

The booklet is a promotional piece printed to draw people to Moorhead and the area. It includes geographical information for the time period, business ads, photographs of business buildings, homes, civic buildings and farms in the area.

It is 5-1/4 inches wide by 8-3/4 inches long, with 58 pages of black and white photos. The re-printed book will be sold for \$10 each. Call CCHS for more information.



Cover of the 1905-1906 souvenir book.

"Corsets & Crinolines" women's fashion program for Communiversity in January

"Corsets & Crinolines: the Shape of Fashion 1860-1900," will be a program on the history of women's fashion in Clay County, held through the Fargo Moorhead Communiversity. CCHS Collections Manager Pam Burkhardt will present the program Thursday, January 12, 9:00 to 11:00 a.m. at Eventide on Main Avenue and Eighth Street in Moorhead.

Burkhardt will talk about women's fashion in the county from the Civil War up to the pre-1900 Gibson Girl, discussing everything from underwear to outerwear. Photographs from CCHS' collection will be used in the first part of the program to illustrate the



progression of styles, and the audience will see examples of styles with actual garments from the society's collection in the second half of the program.

Fees may apply, and registration is required through Communiversity. Look for more information coming up in the Communiversity catalog and CCHS Nov./Dec. Newsletter.

Artists' Studio displays their work in Hjemkomst Atrium

Artists from the Artists Studio are showcasing their recent works in a display at the Hjemkomst Center! The display is located in the atrium area on the third level of the Hjemkomst Center, right across from the Clay County Museum. It can be seen October 15 through December and includes watercolor, collage, and rosemailing.

The Artists Studio is a group of local artists who meet casually on Thursday afternoons at the Hjemkomst Center, 1:30-3:00 p.m. The group welcomes all skill levels and any artistic medium. For information, contact Julie Marxen, Moorhead Senior Connections Director, at 299-5514.

Outreach Displays

	<u>Open</u>	<u>Close</u>
Hawley Public Library	October	January 2006
Moorhead Public Library	October	January 2006
Barnesville Public Library	October	January 2006
Fargo CVB		October 2005

The Hawley Public Library preserves the best with JAMS & HAMS. Artifacts include preservation tools and equipment such as a sausage stuffer, pottery and glass canning jars, booklets and spices.



A CENTURY OF CYCLES – the bicycle in Clay County – pedaled over to the Moorhead Public to celebrate the sport of cycling with photos and artifacts.

OH, WHAT A BEAUTIFUL BABY! with photos and baby-related artifacts moved to the Barnesville Public Library.

A display for the holidays called **COLLECTING CHRISTMAS PAST** will open in November and run through January 2006 at the Fargo-Moorhead Convention and Visitors Bureau near the intersection of I-94 and 45th Street South in Fargo.



The Fargo Dome has a temporary display on the Hjemkomst Center in a small case shared between CCHS and HHIC.

IN-HOUSE DISPLAYS

Work by area artists in the Artists Studio is featured in the atrium display case through December.

A new display of Beulah Forness' exquisite, hand-decorated china has been arranged in the lobby area of the Hjemkomst Center. Forness teaches china-painting classes in the building Tuesday mornings.

Artifacts & Donors

July/August 2005

Donors:

Moorhead: In Memory of Lyle Clark, Mrs. Robert Gracia

Lake Park, MN: Genelle (Skolness) Bentley

LaPort, MN: A. Anne Sladky

Fargo, ND: Kenneth B. Nelson, Eleanor Rensvold, Dean & Marilyn J. Baker, Dean Sather

Valley Center, CA: Vanita Van Veghel Hartmann

Tyler, TX: Roy Olson

Artifacts: (3) boxes of materials related to Moorhead Schools late 1940s-mid 1980s; photocopy of a photo showing students from District 8 School in Moland Township around 1930; folder containing genealogy materials on the Skålness [Skolness] family; book, biographical sketch of *Olav Thortvedt & Family* w/photos; (2) books: *Trinity Lutheran Church 1882-1947* and *1937 Senior Class Album*, Moorhead State Teachers College High School, Moorhead with CD reproduction; photo of Clara (Mrs. O.E.) Flaten; book, *District Twenty* [Toastmasters], 25 Years 1944-1969; Glyndon High School 1918 *The Spud*, which belonged to Rena Catherine Erickson - her father had the first hotel in Glyndon; book, *Statistic of Minnesota for 1870*; (4) pieces of tin sign "Moorhead" found behind house siding on Horn farm - donation included written information, two photos and piece of fabric found with the sign; wooden doll house made in late 1930s by Herold Brunsvold, Fargo, doll stroller and candy box with a few of Marilyn Brunsvold's Campfire Girl items.

Softball in Clay County: the Early Years

By Pam Burkhardt, CCHS Collections Manager

Clay County grew up with baseball, but softball sprung up after World War I. Because Sabin had such an outstanding baseball team in the early 1900s, it was chosen as the theme for Sabin's section in CCHS' 1986 permanent exhibit. We researched Sabin's softball history as well. George "Shorty" Kondos provided vital information for our initial research of softball. We were privileged to have had great softball stars right here in Clay County!

Softball began in Clay County in 1927 with the Fargo-Moorhead Softball League. There were three teams from Fargo and one in Moorhead - the Hilde Grocery team. The smaller towns of Sabin, Rustad, Comstock, Kragnes, and Dilworth fielded teams shortly after. In August of 1927, the first annual RRV Diamondball Tournament was held in Fargo. The Fargo Armour's defeated the Hilde Grocery team in the first game and the Crookston All-Stars beat Elks Dentals in the second. However, the Armour's took the Championship beating Crookston for the Red River Championship.

Money was tight, but most players were in it for the thrill of the game. In 1930, when sponsors could not afford to send a team to the tournament, the guys would form "pick-up" teams with everyone chipping in for gas and food. About half the players owned their own bats.

By 1937, all of the county teams found sponsors and joined the Fargo-Moorhead Softball Association. The

Sabin team was founded by Albert Paasch and sponsored by Gus's Place. Richard Wussow was manager and Clarence Wussow coached. The 1938 team was known as the Sabin Merchants. The team's budget was about \$30 a year out of which balls, bats and other equipment had to be purchased. Transportation was Clarence Wussow's Model T Ford or a team member's school bus which carried spectators as well as the team. Twice, the Ford had to be pushed back to Sabin since the financial status didn't allow for sufficient gas. Balls were hard to come by so Clarence took the balls home to be sewn by hand.

Team managers or sponsors for other early county teams were:

Comstock: Montplasier

Continued next page...



The North Dakota State Champions in 1951 were also the Champs the following year. The players left to right are: (front row) "Shorty" Kondos, Robert Nelson, Tom "Boss" Carney, Stan "Battleball" Berquam, Wesley Woods and Dean Atchison; (back row) Gordy Marchand, Bruce Warnes, Norman Olson, Hod Gravelin, Glen LaGrund, Chris Kondos and Robert Olson. Not pictured was Chuck Kelett. Noted with the photo, the team in 1952 "played and won 7 games in one day."

Softball, continued

Rustad: Dan Reitan & Walt Bye
 Kragnes: Milt Gee & Arlan Stangland
 Georgetown: Ole Kjonaas
 Hawley: McDonald & Hendrickson
 Dilworth: Venice Gardens & Silver Star
 Lounge among others

Moorhead sponsors were many and included: Fairmont Creamery, S.S. Food Market, Country Press, Blue Bird Café, Pioneer Coffee, C. & H. Hamburger Shop and Shorty's Shoe Shop.

In Moorhead, teams played at the Junior High field, Woodlawn Park, and the Moorhead baseball park located on 2nd Avenue North and 17th Street. The Moorhead Chamber of Commerce owned the site. They sold it to the Minn-Kota Manufacturing Company of Fargo who built a plant there. D-S Beverages, Inc. currently occupies the former ball park site.

Although both rural and metro teams played through the 1941 season, virtually all disbanded when players entered the service. In 1942, the league only had two teams from Fargo and one from Moorhead. The Moorhead team was sponsored by Shorty's Shoe Shop and was coached and managed by George "Shorty" Kondos.



Albert Paasch at right in the photo above, was also active in the Sabin Volunteer Fire Department.

After WWII, softball was divided into two classes. Class A represented the Fargo-Moorhead teams and Class B consisted of towns of 2,500 or less. During the 1950s and 1960s there were usually between 24 and 50 Class A teams.

In 1961, the East Region of the North

North Dakota Softball
**HALL OF FAME
 SOCIETY AWARD**
 HARVEY, NORTH DAKOTA

Be it Known: That
George "Shorty" Kondos
 has been selected by a board of Review to appointment

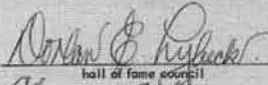
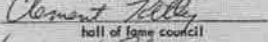

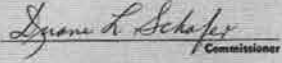
"Mr. SOFTBALL"

A Quarter Century Award as Outstanding in North Dakota Softball
 in recognition as one of the great personalities of Softball and whose
 ability and performance were outstanding for a number of years

QUARTER CENTURY (1933 - 1957)

IN WITNESS WHEREOF, we have hereunto set
 our hands and official seal of the

North Dakota Amateur Softball Association


 hall of fame council

 hall of fame council

 hall of fame council

 Commissioner

Dated this 29 day of June 1968

A well-earned certificate awarded to George "Shorty" Kondos for a quarter century of dedication to the sport.

Dakota Class B Softball tournament was held in Sabin. In 1962, Sabin was the Tri-River League Champions and in 1963 they were the winner of the North Dakota Class B tournament. In 1980, Albert Paasch of Sabin was elected to the Softball Hall of Fame in Harvey, North Dakota. He had been with Sabin's team from the beginning, becoming its manager in 1961. He was regarded as a driving force for their softball team.

Shorty's team retired in 1970 after 30 years of success. The team won 30 Championships and 18 Runner-up or second place trophies. Starting in the 1950s, Shorty had sponsored off-season teams for bowling and basketball accumulating trophies in those sports as well. In 1968, George "Shorty" Kondos was also elected to the North Dakota Softball Hall of Fame. Shorty died in 1990. His obituary read in part:

A fixture for more than 40 years at area softball events as a player, manager and sponsor, Kondos was named Mr. Softball in North Dakota

Continued on page 12...

Development of the Probstfield Trail

By Brian Wisenden, Probstfield Farm Foundation

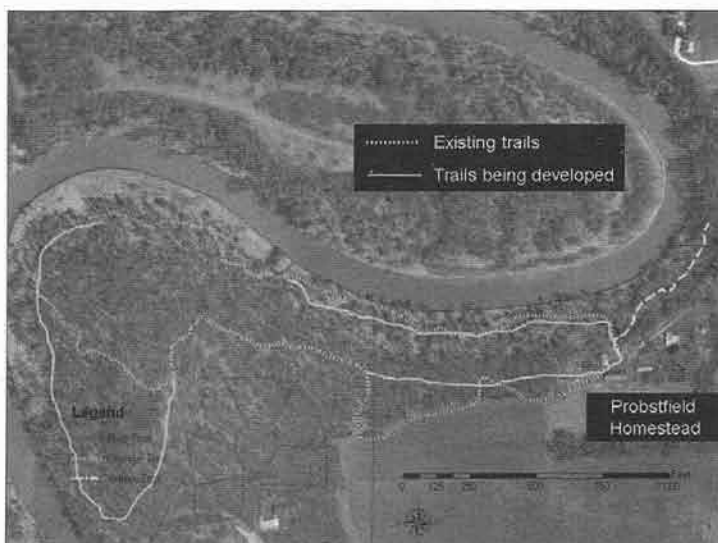
Randolf and Catherine Probstfield settled on the banks of the Red River in 1869 in modern-day Oakport township. The Probstfield property is located strategically at the intersection of the Red River and an oxcart trail from St Paul, connecting commerce between St Paul and what is now modern-day Winnipeg.

The Probstfield homestead still stands. The board of trustees of the Probstfield Farm Living History Foundation (PFLHF, www.probstfieldfarm.org) are working to develop a system of walking trails at this site to educate the public about flood plain ecology and the life and times of early European settlement to the Moorhead region.

The trails are intended to serve as an educational field trip for area schools and for the general public at large. In May 2005, 7th grade science students from Horizon Middle School in Moorhead spent an afternoon walking the trails and learning about the natural history of the region.

When completed this fall, the trails will provide a self-guided hike highlighting historical and ecological points of interest. We expect to have trails cleared and well marked with color-coded blazers before the snow flies. Cross-country ski trails are planned for the winter months. By next summer the Trail Committee plans to erect permanent trail maps and sign posts along the trail. For more information contact board trustee Brian Wisenden (wisenden@mnstate.edu).

The map below illustrates the path of the trails.



HHIC Pangea celebrates cultural diversity

A new feature at the Heritage Hjemkomst Interpretive Center is celebrating cultural diversity in the Red River Valley and Fargo and Moorhead. The first annual "Pangea" kicked-off with a day of international music, dance, food, and shopping, October 2. A wide array of area cultural groups performed, sold ethnic food, and offer items for purchase in an international bazaar at the Hjemkomst Center. The celebration continues through the end of the year with a series of workshops and lectures in October and November and an exhibit in the fourth level gallery November 1 through December 31.

The *Pangea* exhibit showcases the important annual celebrations of different cultures worldwide. Visitors will walk through a maze of festivals, immersing themselves in international holidays and traditions. The lecture and workshop series lets the public learn traditional crafts, lifeways, and cultural expressions from actual practitioners of these traditions. See the series schedule listed below.

HHIC Director Dean Sather says, "We're very excited about the success of this inaugural event. We are looking forward to seeing this event as an anchor for a full annual series of multi-cultural programming in the Hjemkomst Center."

- | | |
|--------------------|--|
| Sat. Oct. 15, 2:00 | Irish Dance through the Ages
<i>Maureen McDonald-Hins</i> |
| Sun. Oct. 16, 2:00 | The Creativities of the Finns
<i>Giles C. Ekola</i> |
| Sat. Oct. 22, 1:00 | Decorating Ukrainian Eggs
<i>Dee Bowman</i>
\$10.00 Please register with Sara Dalen
by October 15 th (299-5511 ext. 224). |
| Sat. Nov. 12, 2:00 | Use and Meaning of Instruments in Aztec Dancing , <i>Monica Trevino</i> |

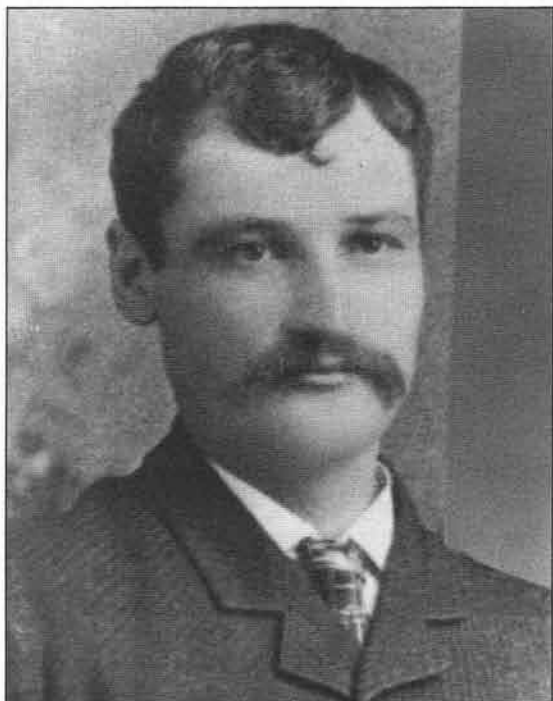
For more information on Pangea, contact Sara Dalen at HHIC: (218)299-5511 ext. 224 or sara.dalen@ci.moorhead.mn.us

Also at HHIC through December 31:

Sisters of the Great Lakes and *Spirit Trails & Sky Beings*

Sisters of the Great Lakes explores the roles and views of women in Native American society through their art, both modern and traditional, while *Spirit Trails & Sky Beings* depicts traditional birch bark scroll narratives by Richard LaFramboise. These two collections illustrate the continuity and dynamic nature of Ojibwe art and culture.

Clay County's



Peter Poull



Roy Larson

By Mark Peihl, CCHS Archivist

The attacks of September 11, 2001 made citizens realize, perhaps belatedly, the sacrifices made and heroic actions taken every day by firefighters, emergency service personnel and members of the law enforcement community. The National Law Enforcement Officers' Memorial in Washington, DC (www.nleomf.com) lists four Clay County police officers who've died in the line of duty. We've told the stories of two in this space before. In our September/October 1989 *Newsletter* we discussed the 1888 murder of Moorhead Patrolman Peter Poull and the subsequent trial and execution of his killer. (An updated version of the article is on our website www.info.co.clay.mn.us/history/. Click on "Stories from Clay County's Past.") In March/April 1993 we covered the shooting death of Moorhead Patrolman Roy Larson in December 1930. His assailant attempted suicide, recovered and spent 36 years behind bars. (For further information contact Mark at the Archives.)

Two other Clay County law enforcement officials have fallen: Dilworth Constable George W. Bridwell and Moorhead Patrolman Alexander "Sandy" McLean. Their stories follow. In addition, at least two others were shot and severely wounded but recovered: Moorhead Police Chief Thomas Murphy and Moorhead Patrolman Peter Ness. We'll tell their stories in another newsletter.

Dilworth Constable George Bridwell

About 9:45 pm Thursday January 8, 1942, Dilworth garage owner Jake Frolich was driving east on US Highway 10 between Moorhead and Dilworth. With him was Leo Lantz, also of Dilworth. They noticed an eastbound car weaving all over the road. Frolich passed the vehicle, sped into Dilworth and warned Dilworth Village Constable George Washington Bridwell of the approaching dangerous and probably

Fallen Heroes



Dilworth Constable George W. Bridwell. Courtesy Dilworth Police Department.

drunken driver.

Constable Bridwell, 54, was born in Iowa and served as a Sergeant in the Quartermaster Corps during World War I. After military service he moved to Minnesota and worked on a farm near Dilworth. He married Minnie Kuehl of Sabin in 1920 and moved to Dilworth where he had a dray service. George was elected to a two-year term as Constable in December 1940 with 80% of the vote. In 1942 he and Minnie had two sons; Donald, age 19 and Robert, 15.

Constable Bridwell tried to flag down the offending vehicle with his flashlight but the driver, later

identified as Richard F. Hyland of Fargo, ignored his signals. Bridwell commandeered Frolich's car, jumped into the front seat and told Frolich to follow the car. Lantz was in back. At the east edge of Dilworth Frolich pulled up alongside Hyland's vehicle. Constable Bridwell again signaled for Hyland to stop. The vehicles slowed and, apparently thinking the cars had stopped, Bridwell stepped from Frolich's car which was still going about 15 miles per hour. Constable Bridwell fell, hitting his head on the pavement. Lantz left the car to attend Bridwell and Frolich followed and apprehended Hyland east of town.

Lantz later testified at an inquest that Bridwell was conscious and appeared to be clear headed after the accident. When Frolich returned with Hyland, Bridwell was able to walk to the car with assistance. The group returned to Moorhead and handed Hyland over to the Highway Patrol. Frolich and Lantz took Bridwell to Moorhead's St. Ansgar's Hospital but he said he felt alright and asked to be taken home. There he soon lost consciousness and was hurried back to the hospital. He died Friday afternoon from a skull fracture.

At the inquest Hyland testified that he had been drinking during the day of the accident and that, though he saw a man signaling for him to stop in Dilworth, he did not do so because he "was afraid to get into trouble" because of his condition. He continued eastward until Frolich pulled alongside and ordered him to stop. He had not seen anyone fall and did not know of the accident.

Clay County Attorney considered charging Hyland with criminal negligence but the Minnesota Attorney General issued an opinion that Hyland's actions had not directly caused Constable Bridwell's death. Hyland plead guilty to drunken driving and was fined \$100 and \$5.50 costs.

Continued next page...

Heroes, continued

Minnie stayed in Dilworth until moving to Moorhead in the late 1950s. She died in 1982 and was buried with George in Sabin's Elmwood Cemetery. Both sons served in World War II and had law enforcement experience. Robert retired in 1985 after 40 years as a railroad Special Agent. He died in 1991. Donald was elected Dilworth Constable in 1948 and later owned a bottle shop in Moorhead, where he lives today. Donald's son, Scott of Dilworth, is a former Clay County Corrections Officer.

Constable Bridwell's name is now inscribed on the National Law Enforcement Officers' Memorial. A separate memorial will be dedicated at the Dilworth Police Department later this fall.

Moorhead Patrolman Alexander McLean

On Friday evening, February 17, 1899 Moorhead Patrolman Alexander "Sandy" McLean was walking his beat in Moorhead's First Ward when he spotted flames coming from the John Hokstad residence on the north end of Western Avenue (at the northern tip of today's Viking Ship Park, northwest of the Hjemkomst Center). McLean turned in the alarm then returned to the scene.

Alexander McLean was born in Canada in 1858 and came to the US in 1880, settling in Cass County, Dakota Territory. By 1884 he and his wife, Jessie Spencer McLean of Scotland, had moved to Moorhead and he was on the police force. They had nine children, three of whom died in infancy. In August 1896 Jessie died in childbirth (the baby, a boy, died five weeks later) leaving Sandy with six young children to raise. Often in 19th century cases like this the father would send at least some of the children to live with relatives. Sandy, however, elected to keep the family together. He hired his next door neighbor's daughter as housekeeper, left the police department and took work as a teamster for a brewery. But by 1899 he was back on the police force at the Hokstad fire.



Moorhead Patrolman Alexander "Sandy" McLean. Courtesy National Law Enforcement Officers' Memorial.

A large crowd of spectators congregated at the fire soon after the alarm came in. Patrolman McLean worked crowd control, keeping the spectators back and out of the firefighters' way. The fire's heat weakened the chimney and it fell, landing on McLean, killing him instantly. In the confusion no one noticed for some 20 minutes.

McLean was well known and well liked. His death and the plight of his children touched the community deeply. McLean had been a member of the International Order of the Odd Fellows and the Ancient Order of United Workmen, fraternal organizations which provided life insurance to their members. But McLean had let his dues run out, leaving the children with no support. The community rallied. The Moorhead Eagle Hose Company of the fire department donated \$50 for the orphans. The Fargo and Moorhead Police and Fire Departments

Heroes, continued

established committees to accept other donations. Moorhead City Council allowed the continued payment of McLean's salary until permanent arrangements for the children could be made. A union representing Fargo firefighters held a ball, charging \$1.00 per ticket. Eventually the community raised over \$870 (the equivalent of about \$19,000 today).

A huge crowd attended McLain's funeral in Moorhead's joint Fraternity Hall. Sixty-five vehicles and several hundred walking mourners followed the hearse and the Moorhead Band to his final resting place, beside his wife and children in Prairie Home Cemetery.

The IOOF and AOUW lodges appointed a joint committee to see to the disposition of the children. They located a brother of Jessie McLean, Alexander Stewart, in Duluth. Stewart could only take in one child, the youngest girl, Virgie. He requested the other children be held in Moorhead until he could contact relatives in Canada who might take them in. Eventually, another brother of Mrs. McLean, John Stewart of Anacortes, Washington, agreed to take all of the children. In late March John arrived and took all six kids to live with him and Jessie's mother, Rachael.

In 2004 Moorhead Police Volunteer Cliff Harrison asked CCHS to help find descendents of Alexander McLean. We were able to track down one of McLean's granddaughters, Ruth Bolstad of Sand Point, Idaho. In May of this year, Patrolman McLean's name was added to the National Law Enforcement Officers' Memorial.

Members enjoy "Superior" tour to Duluth

Tour Director Lisa Vedaa would like to thank everyone who participated in CCHS' tour to Duluth, September 22 and 23! The highlights of the tour, according to evaluations, was the Vista Fleet Fall Colors Brunch Cruise in Duluth Harbor and the St. Louis River estuary, and the bus tour of Duluth with a guide from the Duluth Convention and Visitors Bureau. The bus tour took us along Duluth's beautiful Skyline Parkway to Enger Tower and through historic residential neighborhoods to the Rose Garden at Leif Erikson Park.

The biggest highlight for me was getting to know members of the historical society better!

The tour is offered as a benefit of membership in CCHS. Destinations being considered for next year's tour are the area of Pipestone, Minnesota, the New Ulm area and Winnipeg. Another tour of Clay County is also being planned for Spring 2006.

Snowbird Alert!

It's that time of year again! Some of you are migrating to warmer weather, or just moving into town to avoid the icy highways. This request does apply year round however, even when you are changing residences permanently—We have just one small favor to ask....



Our newsletter is sent at a non-profit bulk rate, and cannot be forwarded, nor can it be held when you are temporarily away. You might have noticed a line above your address label that says "Address Service Requested." This is a service provided by the P.O. that helps keep track of you if you move, but it is costly.

Please help the historical society save money for educational exhibits and programs, and assure that you get your CCHS newsletters, by notifying us of your new or winter address or letting us know to suspend mailing your newsletter if you are going to be away for a long period. Your help is greatly appreciated!

Softball, continued

from 1932 to 1957 and was inducted into the North Dakota Softball Hall of Fame in 1963. He was a life member of the Hall of Fame Council.

From 1930 when he began pitching for Master Barbers, until 1971, the year he last sponsored the Shorty's Shoe Shop team in the Fargo-Moorhead association, he was a highly visible figure. His teams won state championships in 1951, 1952 and 1955 and also won five Red River Valley Tournament titles.

The Clay County Historical Society is proud to have the large collection of Shorty's softball, basket ball and bowling trophies as well as scrapbooks, documents, photos and other items from his long sponsorship of sports. Included in the collection are player Tom "Bus" Carney's pitcher's shoes, a catcher's mask and a rail made of crack [cracked] bats. Carney's shoes were mended many times by Shorty himself.

Sources include: short softball history by George "Shorty" Kondos – January 1986 *Sabin Minnesota Centennial*, 1981; *50 Years of Softball, A History of the Red River Softball Tournament*, 1977; Clay County newspapers and others available by request.

More on Clay County Softball next page...

New CCHS Memberships & Renewals

CCHS extends a special thank you to the following individuals who renewed their memberships or became new members in July and August:

NEW MEMBERS

Michael & Sharon Blasgen, Los Gatos, CA
Michelle Boulton, Bowling Green, KY
Gail Monson, Fargo
Kermit Nelson, Barnesville
Larry Swenson, Glyndon
Gerald & Sherry Zimmerman, Glyndon

GIFT MEMBERSHIPS

Mark Chalimonczyk, Fargo
Donna Thiel, Hankinson

UPGRADES

Donna & Eric Chalimonczyk, Mhd
Janet Gorman, Moorhead
Ann P. Gytri, Felton
Frank & Adrie Israelson, Wolverton
Doug & Margaret Sillers, Moorhead
Bob & Linda Swanson, Moorhead

RENEWALS

Steve K. & Mary M. Aakre, Hawley
Allen County Public Library, Fort Wayne, IN
Robert & Selma Anderson, Moorhead
Erwin & Clarice Backlund, Moorhead

Roland & Carolyn Barden, Moorhead
Russell & Lois Bekkerus, Glyndon
Robert & Dorothy Belsly, Moorhead
Aldrich & Meredith Bloomquist, Mhd
Barton J. Cahill, Moorhead
Mark Chekola, Moorhead
Yvonne C. Condell, Moorhead
Ione Diiro, Moorhead
Paul & Mardeth Dovre, Moorhead
Paul & Joyce Eidbo, Moorhead
Fargo-Moorhead Heritage Society
Sister Mary Ann Fay, Crookston
Ruth Franzen, Fargo
Dorothy Garven, Los Angeles, CA
Marv & Audrey Gerhardson, Hawley
Lawrence & Belle Gilbery, Moorhead
John & Nadine Glas, Moorhead
Helen Glawe, Fargo
Juanita Griebel, El Cajon, CA
Harmon Glass Doctor, Moorhead
Joyce & Gustav Haug, Hawley
Carole Lee Hays, Albany, OR
Holly Heitkamp, Fargo
Dennis & Kris Herbranson, Arlington, TX
Irene Hogan, Moorhead
Andre & Emily Hougum, Moorhead
Ardee & Eunice Johnson, Moorhead
James D. Johnson, Moorhead
Virginia H. Johnson, New York, NY
Donna Knauber, Sabin
Kent & Donna Knutson, Moorhead

Virginia Kolba, Moorhead
Norman B. Kuehl, Fargo
Gary Landgraf, Moorhead
Robert J. Loeffler, Moorhead
Kathryn Matthees, Moorhead
Roger J. Minch, Fargo
Arloine S. Mithun, Moorhead
Moorhead Public Schools
Moorhead Drug Company
Esther O. Olson, Moorhead
Gerald Palmer, Barnesville
Morris Rasmussen, Fargo
J. Donald & Naomi Rice, Moorhead
Sam Rikhus, Ulen
Rona Robbins Mears, Dallas, TX
Anna E. Schneider, Moorhead
Karen & Jo Schneider, Moorhead
Donald & Carol Schoff
Lois Selberg, Moorhead
Maxine Shulstad, Barnesville
Barb & Roger Spilde, Moorhead
Bernice A. Stensgaard, Moorhead
Ronnie & Donna Tang, Felton
Arnold Tranby, Moorhead
Ruth A. Wagner, Moorhead
Tom & Sherry Watt, Glyndon
Faye B. Wells, Vancouver, WA
Phyllis A. Wirries, Moorhead
Susan Woodstrom & Karen Helfand, Minneapolis
Maxine Workman, Moorhead
Marilyn Wussow, Moorhead

Softball, continued

"Baffleball" Berquam

Pitcher Stan "Baffleball" Berquam was a force in the early thirties winning 14 Red River Valley titles by 1949. In the booklet, *50 Years of Softball, A History of the Red River Softball Tournament*, it is said that his success was due to practice. "Stan . . . and his brother used to practice pitching in a potato cellar at Grafton during the winter months." From 1927 through 1947, Berquam was the winning pitcher in 16 of the 22 tournaments played. He was on "Shorty" Kondos' winning team in 1951.



Calendar

- | | |
|---------|--|
| Oct. 16 | Neighborhood Open House
at Bergquist Cabin, 1-3 pm |
| Oct. 19 | Board of Directors Meeting, 8 am |
| Nov. 16 | Board of Directors Meeting, 8 am |
| Nov. 24 | Thanksgiving Day, museum and
archives closed |
| Dec. 10 | Holiday Open House, 2-4
Volunteer Appreciation Party, 5-7 |

Schedule subject to change



The Last One Hundred Years in
MOORHEAD
 MINNESOTA
1900-2000



A Century of Change!

Published by Heritage Publications in collaboration
with the Clay County Historical Society

A Great Gift for 2005!

Moorhead, 1900-2000: A Century of Change is packed with historic photographs and stories that transport you into the city's colorful past. See how much Moorhead has changed!

Also available: *Fargo, ND, From Frontier Village to All America City, 1875-2000* is a unique collection of photos and stories chronicling Fargo's first 125 years.

These high-quality, paper cover books, published by Heritage Publications of Hendrum, MN, are fundraisers for the Clay and Cass County Historical Societies.

Pick up your copies today at the Clay County Museum & Archives in the Hjemkomst Center, 202 1st Avenue North, Moorhead, or send your check or money order for \$23.00 to CCHS, PO Box 501, Moorhead, MN 56561.

Call CCHS at 218-299-5520 for more information.

Sponsor, Patron, Sustaining and Supporting Memberships

This segment of our newsletter continues to grow! Thank you to all of our wonderful members for your tremendous support. Please help us thank these members for supporting the Clay County Historical Society by patronizing their businesses:

SPONSOR (\$500+)

Please consider supporting CCHS at this membership level!

PATRON (\$200-\$499)

Mac's, Inc.

SUSTAINING (\$100-\$199)

Dilworth/Glyndon/Felton ISD
First National Bank of Hawley
Hawley Public Schools
City of Hawley
Korsmo Funeral Service
Moorhead Antique Mall
Moorhead Area Public Schools
Moorhead Drug Company
Moorhead Kiwanis
Rigels, Inc.
Sellin Brothers, Inc.
State Bank of Hawley
State Bank of Moorhead

SUPPORTING (\$50-\$99)

Ace Hardware
Bentley & Bentley, DDS
Eventide
Fargo-Moorhead Heritage Society
Harmon Glass Doctor of Moorhead
McLarnan, Hannaher & Skatvold
Moorhead Area Retired Educators
Moorhead Midday-Central Lions
Richtman's Press Club
Stenerson Lumber
Wells Fargo Bank MN, N A, Mhd
Wright Funeral Home

Sincere thanks goes to these individuals in the Patron, Sustaining, and Supporting membership levels:

Individual Patron (\$200-\$499)

Darren & Jane Leno, Moorhead
Richard T. McMurray, Annandale, VA
Katherine Mentjes, LeCenter, MN

Individual Sustaining (\$100-\$199)

David R. Alme
Robert & Selma Anderson
Rod & Audrey Angstman
Carl L. & June Bailey
Roland & Carolyn Barden
Al & Meredith Bloomquist
Kevin & Kristy Campbell
Paul & Joyce Eidbo
John & Audrey Elton
Rodney Erickson
Burton & Catherine Grover
Andre & Emily Hougum
E. Robert & Donna Olson
Esther Olson
Lynne Olson
Charlotte Onstine
Elaine G. Oss
Lloyd & Bev Paulson
Elsie Pitsenbarger
Donna M. Richards
Davis A. & Hazel Scott
Bill & Evelette Snyder
Ron & Deanna Ulven
Mark & Donna Voxland
Tom & Sherry Watt
Eldon & Sandy Wollmann

Individual Supporting (\$50-\$99)

Marjorie Aakre
Sharon Benzel
Gary & Rose Bergan
Jim Bergquist & Jane Eastes
Peter C. Brown
Ben E. Brunsvold
Eric & Donna Chalimonczyk
Richard & June Chenoweth
Patrick A. Colliton
Dr. Yvonne Condell

Jim & Portia Danielson
Dorothy Dodds
Carroll & Joan Engelhardt
Howard R. Geng
Greg & Mary Alice Gillispie
Janet Gorman
Patty Gulsvig
Ann P. Gytri
Harold Helmeke
Ethel & Ralph Hest
Lorine Holschuh
Audrey Z. Jones
Paul & Florence Korsmo
Richard & Sharon Krabbenhoft
James H. Landblom
Morrie & Ruth Lanning
Don & Alvina Lein
Jay & Rebecca Leitch
Bob & Phyllis Litherland
Jeff Longtine
Ethel R. Medalen
Larry & Jan Nelson
Orlow & Bev Nokken
Robert & JoAnn Nyquist
Sherwood & Marilyn Peterson
Sherwood Peterson, Jr.
James & Dorothy Powers
Paul Pratt
Larry & Elsie Quam
Jon & Kristine Riewer
Mel & Margaret Ristvedt
Helen Rudie
Lois Selberg
Terry Shoptaugh & Deborah Janzen
Doug H. & Margaret Sillers
Nels & Myrtle Snustad
Jim & Chris Stenerson
Ray & Erma Stordahl
Olin & Ruth Storvick
Alvin & Diane Swanson
Bob & Linda Swanson
Kenneth & Mary Tangen
Mary Ellen Thompson
Bruce N. Thorson
Phyllis W. Thysell
Chris & Ellen Velline
Dale D. White
Dick & Kathy Zaylskie

Katrina Emergency Relief Act makes possible 100% deductible donations to all charities

Recently, Fargo-Moorhead Area Foundation (FMAF) Director Karla Aaland sent a letter to area charitable organizations and friends, announcing the benefits of the Katrina Emergency Relief Act signed into law by President Bush September 23, 2005. Parts of that letter are used here to relay this important information to the members and friends of the Clay County Historical Society.

The act provides a wonderful opportunity and added incentive for citizens to achieve their charitable goals. **It is a one time opportunity for individuals to deduct, dollar for dollar up to your adjusted gross income, the amount you donate to charity tax free.**

While the majority of the tax relief act focuses on providing much-needed assistance and tax relief for victims of Hurricane Katrina, it also contains incentives for meeting charitable needs closer to home. The act encourages charitable giving to meet the growing needs of communities—at home and across the county—and prevent a repeat of the downturn in charitable giving following September 11th.

We know that you would agree that generosity should not be rooted in tax laws and advantageous legislation should not drive our philanthropic actions, but history proves it is a true motivator. The motivation may actually come from heightened awareness and the media play of new tax measures. This heightened awareness may add volume to the internal voice that has been encouraging personal generosity. Whatever your motivation may be—it is a great time to make a difference for charitable organizations in our community, including the

FMAF and Clay County Historical Society.


It is important to note that the Katrina Emergency Relief Act of 2005 covers cash gifts made to tax-exempt public charities between August 28, 2005 and January 1, 2006. While Donor Advised Funds are not eligible, donations to unrestricted and field-of-interest funds at community foundations will qualify for the enhanced incentive. For example a donation to:

- Hurricane Katrina relief fund at a community foundation in the Gulf Coast.
- Fargo-Moorhead Area Community Fund to serve the overall need of communities located in Cass County, ND and Clay County, MN.
- One of the nearly 40 Agency Endowments managed in partnership with non-profit agencies who are working hard to secure a steady stream of future income to support their programs (such as Clay County Historical Society's Endowment Fund with FMAF).
- Any of the 100+ regional public non-profit organizations serving the needs of our communities.

The list is endless but the window of time is not! The Katrina Emergency Relief Act of 2005 expires on January 1, 2006. This is a wonderful time to "maximize" your charitable deduction and make a difference. Please do not hesitate to let us know how we can be of further assistance.

CCHS Office: 218-299-5520,
lisa.vedaa@ci.moorhead.mn.us

FMAF Office: 701-234-0756, office@areafoundation.org



Inside, Outside, episdn Down

Discover Clay County history
from a different perspective!

Through March 26, 2006

Clay County Museum Hours: 10-5 Monday-Saturday, 10-9 Tuesday, 12-5 Sunday
Hjemkomst Center, 202 1st Avenue North, Moorhead, MN ♦ FREE ADMISSION



CLAY COUNTY HISTORICAL SOCIETY

MEMBERSHIP FORM

YES! I would like to become a member of Clay County Historical Society

- ☐ Individual* \$20 ☐ Sustaining \$100
☐ Family* \$35 ☐ Patron \$200
☐ Supporting \$50 ☐ Sponsor \$500

*Businesses are not eligible for Individual and Family membership levels

CCHS MEMBERSHIP BENEFITS:

- ◆ Support preservation of your heritage
- ◆ Bi-monthly newsletter
- ◆ Discount on Acid-Free Preservation supplies
- ◆ Discount on photo reproductions from archives
- ◆ \$1 off admission to Hjemkomst Center Exhibits
- ◆ Access to CCHS history tours
- ◆ Voting Privileges

In addition to the great benefits listed above, Supporting, Sustaining, Patron and Sponsor members a certificate ready to frame and display, and a listing in all CCHS bi-monthly newsletters.

To become a CCHS Member please complete and return this form or a copy of this form with check for dues payment to:

CLAY COUNTY HISTORICAL SOCIETY
PO Box 501, Moorhead, MN 56561-0501
Visit our website! www.info.co.clay.mn.us/history

Name: _____

Business (if applicable): _____

Street Address: _____

City, State, ZIP: _____

Phone: _____ E-mail: _____

CLAY COUNTY HISTORICAL SOCIETY

Hjemkomst Center
202 1st Ave N
PO Box 501
Moorhead MN 56561



Non-Profit
Organization
U.S. Postage Paid
Moorhead, MN
56561
PERMIT NO. 494

ADDRESS SERVICE REQUESTED



We're on the web!
www.info.co.clay.mn.us/history