

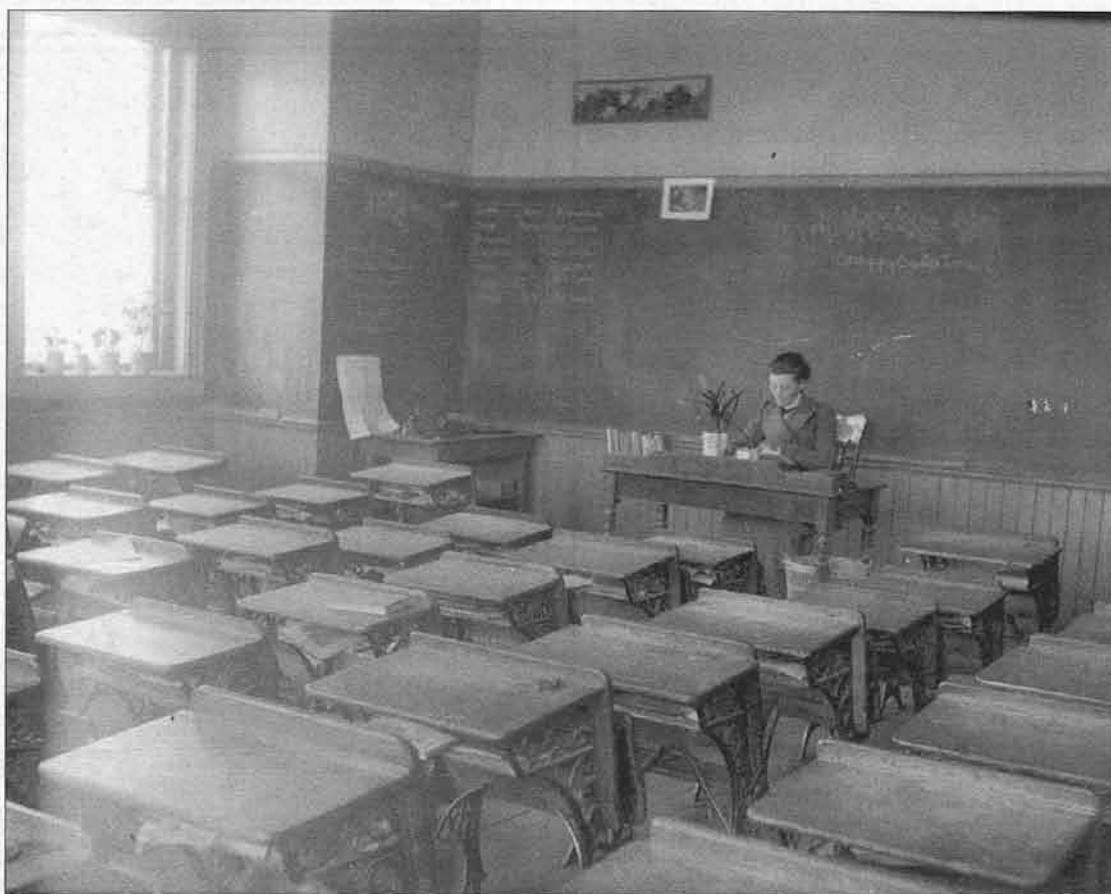
Clay County Historical Society

Clay County Historical Society Newsletter September/October 2003

Volume XXVI No. 5

In this issue:

- Back to School
- What the Heck is a Hectograph?
- A Streetcar Named 28
- Exhibit News
- Collection Requests



Mrs. Thomas Dunn (Nellie E. Mulcahy) waits for her students in the District #58 "McCabe" school located in Section 26 of Elmwood Township. This photo was taken around Easter between 1895 and 1900. On March 19, 1904 the school was destroyed by fire, but a new building was ready that fall. In 1952, the district reorganized with students going to Barnesville.

The early Clay County teacher was usually a graduate of a Normal School – a teacher training institution. The Moorhead Normal School (now Minnesota State University Moorhead) was the fourth such training institution in the state. In 1903, there were 101 applicants taking the teachers' examination in Moorhead. Fifty-seven of these teachers were from Clay County.

President's Column

By CCHS President, Donna Voxland



Our Long-Range Planning Committee continues to meet on a fairly regular schedule, considering everyone's busy summer schedules. It has been exciting to dream and plan, even while dealing with the current budget cut situation. We are striving to keep, as well as expand, our Historical Society's mission as we look to the short term and the long term future.

Our latest meeting was a discussion of Education. A major part of our mission is "to disseminate knowledge" of the history of Clay County. We discussed the idea of increasing our programs through a "lecture series" or other avenues. I know that Mark and Pam have a rich store of information to share with us, but we invite anyone to give us input on program ideas.

Let your curiosity run wild, and tell us where it takes you!

Look in your own Backyard: A Spotlight on Local Genealogy Experts

The above title is the theme of the 2003 Family History Workshop presented by the Heritage Education Commission. The day-long workshop will take place Saturday, October 11, at Minnesota State University-Moorhead's Comstock Memorial Union.

The workshop consists of six consecutive sessions in four time slots, plus a luncheon. Some of the session titles are: Minnesota & Clay County Resources, North Dakota & Cass County Resources, Using the LDS Family History Center, Researching Germans from Russia, Swedish Research, plus much more!

The cost of the program is \$27. Registration and payment deadline is October 1. Send your registration and payment to Heritage Education Commission, PO Box 82, MSUM, Moorhead, MN 56561, or call 218-477-2183 for more information.

Donations and Memorials

July & August 2003

Jim Bergquist & Jane Eastes, Battle Lake, MN
to the Bergquist Cabin Fund

The Evergreens, Moorhead

Fargo Moorhead Home Economists, Fargo

Golden Age Senior Citizens Club, Arthur, ND

Donald Hansen, Napa, CA

Hunter Friendship Club, Hunter, ND

Norma Nash, Englewood, CO

Cynthia Peterson, Milbank, SD

Karol Kay Rood, Jacksonville, FL

to the Bergquist Cabin Fund

Swedish Cultural Heritage Society of the Red River
Valley, Fargo, to the Bergquist Cabin Fund



CLAY COUNTY HISTORICAL SOCIETY

Hjemkomst Center, 202 1st Avenue North
PO Box 501, Moorhead, MN 56561-0501
Phone: 218-299-5520/Fax: 218-299-5525
www.info.co.clay.mn.us/history

BOARD OF DIRECTORS

Donna Voxland, President, Moorhead
Helen Rudie, Vice President, Moorhead
Alvin Swanson, Treasurer, Moorhead
John Elton, Secretary, Borup
Ben Brunsvold, County Rep., Moorhead
Steve Aakre, Hawley
Rose Bergan, Hawley
Rodney Erickson, Moorhead
Merlyn Valan, Moorhead
Sherry Watt, Glyndon
Dale White, Moorhead

STAFF

Lisa Vedaa, Director
Pam Burkhardt, Collections Manager
Mark Peihl, Archivist
Alvera Murch, Bookkeeper
Janet Nelson, Volunteer Coordinator
Jane Renner, Office Assistant (funded by Experience Works)

NEWSLETTER PRODUCTION

Lisa Vedaa, Editor
Pam Burkhardt, Contributor
Mark Peihl, Contributor

CCHS STAFF E-MAIL

lisa.hanson@ci.moorhead.mn.us
pam.burkhardt@ci.moorhead.mn.us
mark.peihl@ci.moorhead.mn.us

Back to School

By Pam Burkhardt, CCHS Collections Manager

Back to School at the County Fair

CCHS's new Outreach case *School's in Session: Rural Clay County Schools* debuted in the District No. 47 schoolhouse on the fairgrounds at the Clay County Fair July 10 -13. Rose Bergan* is a volunteer at the fair and coordinator for this project. Early on, requests for photos & memorabilia appeared in area newspapers. Even as the fair opened, items poured in -- loaned 3-D items going into display cases and photos placed on top.

Throughout the spring, CCHS received school-related materials for copying. We used copies of both loaned items and items from our collections to develop seventeen display panels. Panels from an earlier outreach topic, *Fun with Dick and Jane* were brought out of retirement. The display focused on a number of rural schools starting with the earliest and ending with the last. Among our CCHS artifacts on display were several Dick and Jane books, two school bells and a hectograph. [What the heck is a hectograph? See page 5.] The CCHS display is currently touring the public libraries in the county and will appear at the fair again next year.

*Rose is also a CCHS Board Member!

Teachers went back to school

CCHS has two sets of John C. Sather's teachers' exams for 1897 and 1900 as well as his Second Grade Certification certificate for 1898. Lucie Woodward, another Clay county teacher, amassed a small collection of certificates in the 1880s (one certificate shown this page). Second Grade Certificates meant Sather and Woodward could teach for one year from the date of the examination date in the county issuing it. The subjects Lucie was allowed to teach are the ones on the certificate with her exam results. A third grade certificate covered fewer subject areas, but was also good for one year. A first grade certificate added more difficult subjects and,

SECOND GRADE CERTIFICATE.

For Clay County, Minnesota.

This Certifies, That Miss Lucie L. Woodward has passed a satisfactory examination as the law requires, in the studies herein indicated by markings attached. Believing her also, to be of good moral character and one to whom the education of youth may be safely entrusted, I hereby authorize her employment as a teacher in this county for one year from date.

Visited in schoolroom 1887 Government System in work

Method in teaching 1887

SCALE:—100, Perfect; 90, Excellent; 80, Good; 70, Fair.

No. Institutes attended, No. Terms at Normal School,

Reading, <u>86</u>	Grammar, <u>93</u>	Arithmetic, <u>93</u>
Writing, <u>85</u>	Orthography, <u>96</u>	History of the U. S., <u>88</u>
Geography, <u>85</u>	Hygiene, <u>96</u>	Civil Government, <u>90</u>
Theory and Practice, <u>94</u>		

Average Standing 90

Given under my hand this 29th day of October, 1887.

Prepared by Superintendent of Public Instruction, James D. Johnson County Superintendent.

Lucie Woodward and her sister Jane taught in Clay County rural schools for many years. The museum has Lucie's Clay County teacher's certificates dating from 1872 to 1887, a letter of commendation dated Aug. 15, 1877 from the Egdon District No. 7 Board of Trustees for the summer 1877 term, and other correspondence.

at this time, was good for a longer period.

The first set of Sather's exams for all grades was issued by the Dept. of Public Instruction in St. Paul, Minnesota, on August 1, 1897. Each of the subjects is on its own 8½ x 5½ sheet of paper: Theory and Practice, Arithmetic, Reading, Geography, United States History and Stimulants and Narcotics. The second set is an *Examination for Minnesota State Certificates*, February 2 and 3, 1900. These tests resemble newspaper clippings (see example, page 4). On both sets you may be expected to answer certain required questions and a choice of the remaining ones. The tests cover knowledge of the subject matter and teaching skills. The form some answers require illustrates the level of comprehension by the prospective teacher.

Following are one or two questions from 14 exams. The number of questions and instructions follow in brackets. Specific instructions appear in *italics*. Two complete exams are illustrated elsewhere. Sorry, no answers are available. Pencils ready?

Continued next page...

Set 3 1897 ARITHMETIC [15 questions/answer ten]

5. Add $\frac{1}{8}$ of 75 and $\frac{1}{9}$ of 40.
 9. For what should I have sold hay per ton to gain $16\frac{1}{2}\%$ per cent if $33\frac{1}{2}\%$ per cent was lost by selling at \$16?

Set 3 1897 READING [15 questions/answer ten]

3. Give a principle of reading that will admit of general application.
 7. What is pitch? How divided?

Set 3, 1897 GEOGRAPHY [14 questions/answer ten]

6. Of what is the German Empire composed?
 13. What is the inclination of the earth's axis to the plane of its orbit?

Set 3, 1897 UNITED STATES HISTORY [15 questions/answer ten]

2. Name the European countries that made explorations in America previous to 1607.
 11. What was the cause and result of the King Phillip's War?

Set 3, THEORY AND PRACTICE [15 questions/answer ten]

10. How should the minds of children be exercised for the purpose of cultivating their reasoning powers?
 11. What subjects may properly taught to children between the ages of four and seven years?

Set 3, STIMULANTS AND NARCOTICS [10 questions/answer all of them]

1. What is the difference in effect between alcohol and tobacco?
 10. State your own position with reference to the use of stimulants and narcotics.
 [Aside from Pam: How do you think the prospective teacher would be expected to answer?]

ARITHMETIC, Minnesota 1900 [8 questions/answer the first two and any three of the following 6, but solve the questions in the order in which they are given]

2. Explain only. In the division of one fraction by another, why does inverting the divisor and multiplying the dividend by the resulting fraction give the correct result?

ELEMENTARY ALGEBRA, Minnesota 1900 [5 questions/N.B. operations, as well as results, required]

2. Factor the following: $27 + 8a^3$; $x^2 - (2y - 3z)^2$; $2x^3y - 2x^2y^2 - 60xy^3$.

PHYSICS - NATURAL PHILOSOPHY, Minnesota 1900 [answer all]

2. Represent by diagram a lever of each of the three classes, locating the weight, fulcrum and power.

EXAMINATION
 for Minnesota State Certificates.
 Feb. 2 and 3, 1900.
CIVICS.

[Answer the first and sixth, and any other two questions, a total of four questions and topics.]

1. From what sources come the funds that support your school?
2. How is a juryman chosen?
3. How is a presidential candidate nominated?
4. How does the governor of Minnesota "veto" a bill? (Describe fully.)
5. How does a village become incorporated?
6. Name five things a state legislature is forbidden to do.
7. Name five important matters which our state legislature may regulate and which congress can not.

After passing teachers exams, rural school lessons should be easy! Try your hand at two of John Sather's 1900 Minnesota State Certificate exams. John's father, Christian Sather of Keene Township, donated land for the District No. 38 school. Keene was so sparsely populated that District 38 covered the northern half of the township.

PHYSICAL GEOGRAPHY, Minnesota 1900 [6 questions/answer any four]

5. (a) Distinguish between weathering and erosion. (b) Name three important agents of weathering, of erosion.

GEOGRAPHY, Minnesota 1900 [5 questions/answer the first, and only three of the remaining four]

1. Draw an outline map of Africa, outlining the Orange Free State, Cape Colony, The Transvaal Republic, and Natal; and locate Pretoria, Kimberley, Ladysmith.

UNITED STATES HISTORY, Minnesota 1900 [7 questions/omit two questions]

7. What is the declared attitude of Congress toward the future government of the island of Cuba?

DRAWING, Minnesota 1900 [5 questions/answer a total of four questions having choice between questions 1 and 2]

1. Draw from the objects two books placed below the level of the eye, - one placed at an angle with the picture plane and the other leaning against it.

Continued, page 12...

EXAMINATION
 for Minnesota State Certificates.
 Feb. 2 and 3, 1900.

ENGLISH GRAMMAR.

[Note.—In mentioning a phrase or clause, it is sufficient to write the first word or two, and the last word with an intervening dash. Construction denotes not only the kind of element, and, if adverbial, what it expresses, but also its relationship to some particular part of the sentence.]

- I. If, indeed, there be anything in local association fit to affect the mind of man, we need not strive to repress the emotions which agitate us here. We are among the sepulchres of our fathers. We are on ground, distinguished by their valor, their constancy, and the shedding of their blood. We are here not to fix an uncertain date in our annals, nor to draw into notice an obscure and unknown spot. If our humble purpose had never been conceived, if we ourselves had never been born, the 17th of June, 1775, would have been a day on which all subsequent history would have poured its light, and the eminence where we stand a point of attraction to the eyes of successive generations.
 Webster's First Bunker Hill Address.

- II. I come to bury Caesar, not to praise him.
 The evil that men do lives after them;
 The good is oft interred with their bones.
 He was my friend, faithful and just to me:
 But Brutus says he was ambitious.
 He hath brought many captives home to Rome,
 Whose ransom did the general coffers fill:
 Did this in Caesar seem ambitious?
 You all did see that on the Lupercal
 I thrice presented him a kingly crown,
 Which he did thrice refuse.
 Shakspeare's Julius Caesar.

1. Give the construction of the following as italicized in the passages:
 a) *fit*, b) *to affect*, c) *to fix*, d) *which*,
 e) *where*, f) *point*, g) *that*, h) *whose*,
 i) *ambitious*, j) *that*, k) *him*.

2. Give the construction of three subordinate clauses chosen from passage, I. with a view to variety.

3. Fill this diagram with the principal parts (subject, verb and complement, if any) of all propositions (clauses), both principal and subordinate, in passage II:

SUBJECT	VERB	COMPLEMENT

4. Rewrite the last sentence of passage, II. with a change of voice.

5. Give the possessive plural of: *he*, *my*, *friend*.

Duplication – the old way!

By Pam Burkhardt, CCHS Collections Manager

Making multiple copies for the classroom is much easier today than it was 75 years ago when Eliza S. Wulff (Janssen) was teaching Clay County. Eliza used a Hektograph brand gelatin duplicator that is now in the CCHS collections.

How is hektograph duplicating done? A master sheet is made with the words and/or drawings in ink on the front. The front of the master is "smoothed" down onto a flat bed consisting of a firm glycerin and gelatin mixture. The ink from the master transfers to the gel after a few minutes and the master can be removed. To make copies, clean sheets of paper are "smoothed," one at a time, onto the bed of gel, left for a few seconds and removed. After making sufficient copies of the first sheet, the surface of the gel is wiped clean of ink with a damp sponge. The hektograph is ready for the next image to be copied.

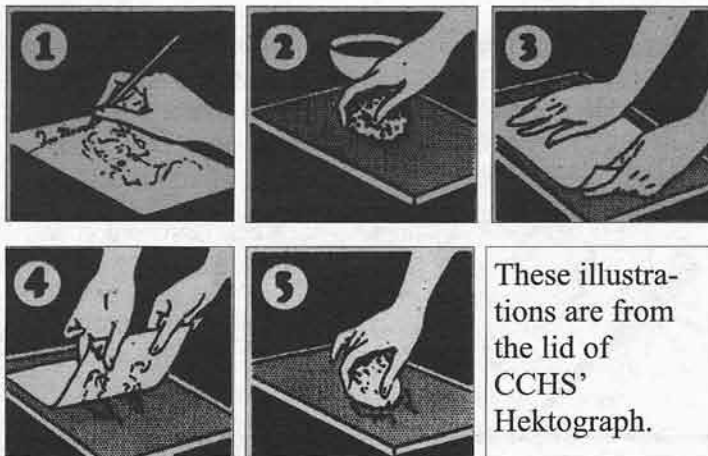
We have the Hektograph carbon paper made for Eliza's duplicator, but Hektograph typewriter ribbon or pens were also available. It was suggested that ordinary pens might not make good copies. The District No. 3 "Woodland" School collection has a hektograph booklet of artwork for schools.

If you have never used old duplicating machines, here is a brief explanation for two of them:

A **mimeograph** uses a master sheet having an extra "webby" feature in the paper. When you type on the mimeo master, the letter is cut into the plastic paper leaving a reinforced space the shape of the letter. The finished master is placed face down on a drum. As the drum is turned, mimeo ink flows through the holes in the master leaving a copy on the face of the clean sheet of paper drawn through the machine.

Many more copies can be made with a mimeo than with a spirit duplicator.

To work, a **spirit duplicator** removes a trace of ink on the back of the master to make a copy. The master has two attached parts, the first is the master sheet, the second sheet has a surface coating of soft, but solid ink. When words are typed or images drawn, ink from the second sheet is left on the back of the first. This master is secured face down to a drum. As the handle turns the drum, a thin coating of spirit fluid is brushed onto the paper. The imprint of the master is immediately made on the sheet of paper drawn through the machine.

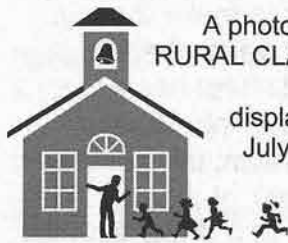


If you are *really* interested in making and using a hektograph, check out the web site containing the an Education Manual for the Peace Corps - the **INFORMATION COLLECTION & EXCHANGE Manual M0042** by HELEN FOX on the web site: <http://mng-unix1.marasconewton.com/peacecorps/Documents/M0042/m0042e/m0042e0f.htm>

Pop Quiz: With a **hektograph**, ink from the master is embedded in _____ when the master is _____ down and removed. Copies are made, one sheet at a time, when pressed down on the surface. When you are finished, clean the surface with a damp _____.

Outreach Displays

	<u>Open</u>	<u>Close</u>
Hawley Public Library	July	October
Moorhead Public Library	July	October
Barnesville Public Library	July	October
Fargo CVB	July	October



A photo display **SCHOOL'S IN SESSION: RURAL CLAY COUNTY SCHOOLS** is "Here!" at the Hawley Public Library. This display debuted at the Clay County Fair July 11. In addition to several artifacts, there is a repeat visit by Dick and Jane. Don't be absent!

Moorhead Public Library travels back in time with *more THEN & NOW* photos. This display pairs old photographs of Clay County sites with more recent photos taken in the same place.

The Barnesville Public Library presents **WHAT IS IT? WHEN WAS IT?** This display tests the knowledge of young and old alike. If you are stumped by the "what is it?" you are in the right place to look them up!



Visitors at the Fargo Convention and Visitors' Bureau along I-94 will have **FUN IN THE SUN!** this summer. The display highlights fishing, swimming and baseball. Watch out for those pesky mosquitoes!



IN-HOUSE DISPLAYS

The CCHS hall case hosts the Red River Valley Woodcarvers Club display that opened Aug. 8. Included is a hand carved carousel horse, two kubbe stols (tree trunk chairs) and a huge, old-world mirror frame. The animal figures are almost life-like. The character figures include a barbershop quartet, a choir of Santas, a skiing troll, Norwegian mangle board, chip carved boxes and much more. The display is up through Oct. 4. [Artists Workshop will open Oct. 10.]

A special display of exquisite, hand-decorated china is setup in the lobby area of the Hjemkomst Center. These items were painted by Beulah Forness who is still holding china painting classes in the building Tuesday mornings.

A small case promoting our *Eating Out in Clay County* exhibit is on view in the lobby in the Hjemkomst Center. We hope this "appetizer" teases your appetite for the "main course" in the CCHS museum just down the stairs.

Artifacts & Donors

July/August 2003

Donors include:

Moorhead: Bette Knutsen Family, Ruth Swanson, Clay Co. Treas. Office, Dorothy Dodds, The Friendship Club
Glyndon: Pat Lynde-Hemmah
Felton: Londa Ingebretsen, Deona McEnery
Dalton, MN: Steve Handegaard
Chanhassen, MN: Polly Schellack
Fargo: Mort Mazaheri, Virginia Brown (transfer from North Dakota Institute for Regional Studies)
West Fargo, ND: Industrial Builders, West Fargo/Troy Erickson, Project Director
Horace, ND: Wayne L. & Pat Cossett
Tucson, AZ: Carin Stair
Torrence, CA: Chris Velline
Anonymous

Artifacts include: (copy) of videotaped reel-to-reel film of Sabin events in the early 1950s filmed by Albert Paasch; newsletter: Ostrom-Hatteli Family Association Record, Nr. 19, Dec. 2002; booklet, privately printed in 2003 *Pleasant Valley School District #102, Elkton Twp. 1900-1952* also a looseleaf binder with two extra sheets for Pleasant Valley School Dist. #102 Elkton Twp. [this binder had been on display in the schoolhouse at the 2003 Clay Co. Fair]; photoprint of Sheriff Pete Melvey, wife Clara & daughter Helen; (3) photos of migrant labor housing located on Highway 75 south of Moorhead; (5) photoprints of Waterman's Department Store fire ruins, Allen Ingebretson, probably the photographer [Structure built in 1881 as Merchant's Bank corner on Center and 6th. The bank failed in 1892. Waterman's burned Oct. 30, 1967.]; (3) images: Hawley Restaurant interior; a second (possibly) Hawley restaurant interior; Cameron Hotel, Hawley; box of materials re: Warren Dodds including business and personal papers; first minute book with membership lists for The Friendship Club of north Moorhead 1955-1962 with attached coin purse used by the Treasurer for club funds; newsletter: *The Messenger* of The three Leaf Clover Parish, [of] Spring Prairie, Downer, Glyndon [Townships] Vol. 1, No. 1, Glyndon, Minnesota, May 16, 1926 contains church news & area advertisements and Moorhead/Fargo postcards; (15) audio cassette tapes of oral interviews concerning community development of Fargo-Moorhead conducted by Mazaheri in 2003 & (14) vols. 3-ring binders of slides taken and used by Mazaheri in classes at NDSU; program booklet, *Minnesota Vietnam Veterans Memorial*, Dedication Ceremony, State Capitol Grounds, St. Paul Minnesota, September 26, 1992; (2) Staats Tray cast iron & nickel plate coin counters patent date Feb. 25, 1890 – one is a slightly newer model; (24 pcs) dinnerware from the Silver Moon, Moorhead; piece of modern hardanger embroidery made by Bette Knutsen who was a member of a Hardanger embroidery club which met in members homes; needlework booklets with several uncommon patterns, embroidery transfers; clear glass, coffin-shaped bottle "Thomas Erdel/Fine Liquors/Ridge Ave. Near North Bridge/Moorhead, Minn." made before 1900; (1) Main Avenue bridge plaque (from the Moorhead side) removed during demolition of 1936 bridge for replacement beginning in 2003. Text on this plaque reads, "Federal Aid Project No. 543 Minnesota 1936."

CCHS Exhibit News

Preservation Alliance of Minnesota

In August, CCHS hosted the traveling display *Minnesota's Ten Most Endangered Historic Properties - 2003* from the Preservation Alliance of Minnesota in the atrium in front of the Museum. Some of the buildings are abandoned and subject to vandalism; some are threatened by encroaching development. The sites include the 1963 Guthrie Theater in Minneapolis (#7), and Dakota County's Pilot Knob Oheyawahe (#8). Site #1 is the MacDougall Farm in Morrison County. You are encouraged to submit your list of endangered historic properties in your [Minnesota] area to:

The Preservation Alliance of Minnesota
International Market Square
Suite 54, 275 Market Street
Minneapolis, MN 55405-1621

Or go to www.mnpreservation.org/portfolio.10_most_endangered.php to make a nomination

New Exhibit Coming in January!

A Captive Eye: German POW Art and Artifacts

CCHS will host a provocative new exhibit from the non-profit, educational organization TRACES, starting in January! **A Captive Eye: German POW Art and Artifacts** features some 1,000 photos, letters, journals, paintings, wood carvings, camp-issued clothes and money, books, musical instruments, tools and much more from the German Prisoner of War camp in Iowa - Camp Algona, and its 35 branch camps across Iowa, Minnesota and the Dakotas. The exhibit opened in March 2003 at the Music Man Square Museum in Mason City, Iowa. While TRACES hoped for at least modest turnout and passing interest, the exhibit has sparked rare audience response. Above all, the exhibit is reminding its Upper Midwestern viewers of their own World War II homefront experiences.

TRACES is a non-profit educational organization created to gather, preserve and present stories of people from the Midwest and Germany who encountered each other during World War II. Many of these stories have lain beneath the dust left in the wake of a World War most never

Continued, page 12...

Just "Sweetening you up" for some requests!

Brown Sugar Pie

(Used to Serve Thrashers [sic])

2/3 c. brown sugar	1 heaping Tbsp. flour
1 Tbsp. butter	1½ c. milk
2 Tbsp. Milk	1 baked pie crust
2 egg yolks	2 beaten egg whites

Mix together brown sugar, butter and 2 tablespoons of milk. Boil until waxy. Mix in egg yolks. Add flour and remaining milk and cook until thick. Add flavoring and put in bread [sic] crust. Top with whites of eggs and brown in oven.

[Hilda Bekkerus, *Sharing Our Best*, Barnesville Assembly of God [Church] Cook Book 1993 page 61]



Request #1: Do you have a special dish you serve the workers during seeding or at harvest time? If so, send us a copy of the recipe with the story behind it. Even if you adapt a dish for this purpose, send us the recipe and the whys and hows.



Request #2: Are you feeding a harvest crew in Clay County? Whether you feed one or many, take photos of the food preparation, transportation and consumption.

Sent us copies or scanned images. We might post some in the exhibit or print some in the newsletter, but all will be preserved in the collections. If you have similar photos from the past, we're interested in them, too!

Photos courtesy
Lisa Vedaa

Continued,
page 13...





Streetcar Number 28 awaiting restoration. This is what Number 28 looked like this summer stored at an area farm. Though it looks a little rough, it's actually in remarkably good shape. e-bay photo.



A Streetcar Named 28

By Mark Peihl, CCHS Archivist

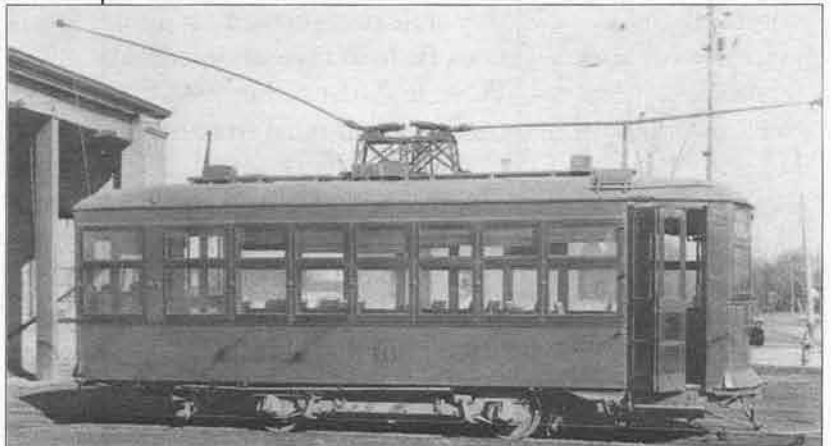
This is one of those good news, bad news stories. The bad news is that CCHS missed an opportunity to secure a significant local history artifact. The good news is that it's now in the hands of another reputable historical agency. Let me explain. On Friday, July 25, I checked, as I occasionally do, the online auction house e-bay for anything related to local history. When I did a search for "Moorhead MN" I was startled to find an auction for a "REAL VINTAGE STREET CAR 1910 ERA." The photos confirmed that it was the car body of streetcar number 28 from the Fargo-Moorhead Electric Street Railway.

Some background here. Our readers may remember a story we ran on the trolley line ("Fargo-Moorhead Electric Street Railway: 1904-1937," CCHS *Newsletter*, Nov/Dec 1994). Before busses, electrically powered streetcars filled Fargo-Moorhead's mass transit needs. A heavy, copper cable suspended above standard-gauge railroad tracks laid directly in the twin-towns' streets provided the power to whisk passengers on regular routes. Initially, the line crossed over to Moorhead on the old North Bridge to 2nd Avenue North, then south down 4th Street to downtown Moorhead, turned east on Center Avenue and extended to 6th Street. From here a branch line ran south on 6th Street and via 5th Avenue South, 9th Street and 7th Avenue South to the Moorhead State Normal School on 11th Street (MSUM today.) A second line continued east on Center Avenue to 10th Street, turned north on 10th and headed to the Clay County Courthouse and the new Northwestern Hospital (later St. Ansgar Hosp.) at 9th Avenue North. This provided all parts of Moorhead with good service except the 2nd Ward: the area northwest of Concordia College. The fare was a nickel.

In 1912, Northern States Power, who had recently purchased the streetcar line, requested a new 25-year franchise to use the streets. Second Ward residents

used the opportunity to petition NSP to extend service to their area. NSP declined, saying the neighborhood was too close to downtown to make the extension worthwhile. NSP received the franchise and 2nd Warders stewed.

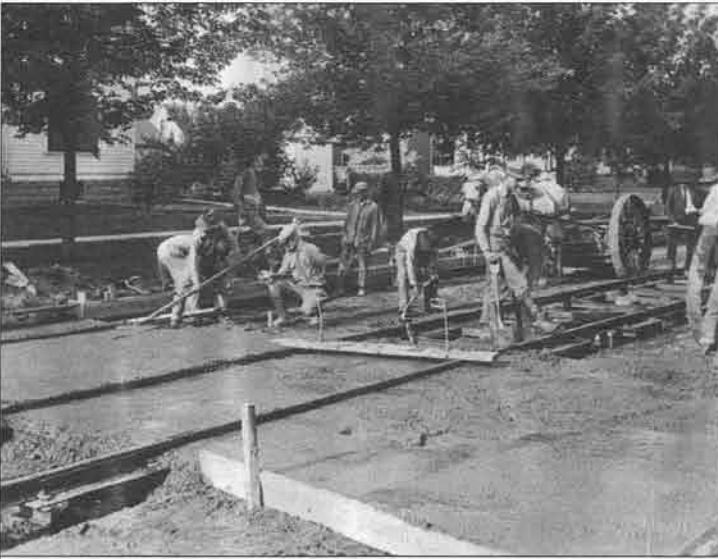
After World War I ended in 1918, the country faced post-war inflation. Prices rose dramatically, as did the company's operating costs. NSP's 1912 franchise locked them into the nickel fare. They couldn't raise rates without the approval of Moorhead voters. In March 1920, the company asked the city for a two-cent fare increase. Second Ward residents smelled another opportunity. The city negotiated an



Streetcar number 16 at Fargo car shops, 1920. Number 16 was one of the first 15 Birney style cars purchased from the Cincinnati Car Company in 1920 to upgrade service. The company ordered number 28 from the American Car Company in 1923. There were slight differences between the cars but Number 28 will look very much like this after restoration. Joe Hutchinson Collection photo, *Electric Railways of Minnesota*, Russell Olson, 1976.

arrangement allowing the increase provided that, after three years, the company would built up to 3,500 feet of additional line to the Second Ward. The company also planned to upgrade the number and quality of their cars. Moorhead voters agreed and the fare went up.

In November 1920, the Cincinnati Car Company of Ohio shipped 15 brand new Safety Cars to Fargo-



Pouring concrete around the new 2nd Ward streetcar line tracks, 1922. The addition of this line required the purchase of a new streetcar, Number 28. NSP Collection.

Moorhead. Safety or Birney style cars (named for one of the inventors, Charles Birney) revolutionized the streetcar industry worldwide. Most earlier F-M streetcars had been purchased second-hand from the Twin City Rapid Transit Company (also known as "Twin City Lines"). The Minneapolis-St. Paul streetcar company built their own cars. They were dark green, large, heavy and required a motorman and a conductor to operate. The new cars were painted a bright Kodak-yellow for better night visibility, lighter, much more energy efficient, carried the same number of passengers and, most importantly, required only one motorman to run them. Service improved and the company saved money.

In 1923, the F-M Street Railway Company lived up to their end of the bargain. During that summer the company extended their tracks south down 6th Street to 8th Avenue South, west on 8th to 2nd Street then north on 2nd to 6th Avenue South. As the new route ran only from Center Avenue to the end of the line and back, the car passed every point on the line every 15 minutes. The company ordered a special car to run specifically on this line. On August 24, 1923, streetcar number 28 arrived in Moorhead from the American Car Company in St. Louis. This was apparently the only trolley the company ordered from American Car. It differed slightly from the Cincinnati Company cars purchased in 1920.

The new fare and cars helped the company through the 1920s, but with the depression of the 1930s and increased auto use the company revenues declined. NSP probably would have been glad to get out of the streetcar business in Fargo-Moorhead in the early 1930s, but they were locked into the 1912 25-year franchise. Finally in August 1937, NSP ended streetcar service and busses began filling all our mass transit needs.

According to some accounts, the streetcars were hauled to Matson field in north Moorhead, stacked up and burned. The metal parts were hauled off for scrap. Two car bodies apparently survived, however. A friend of mine stumbled upon one while hunting in the mid 1980s. It stood in a shelterbelt somewhere southwest of Fargo. I was never able to locate it. In summer 2002, an anonymous tipster suggested to me that the farmer had torn out the shelterbelt and burned the streetcar. I'm still pursuing leads.

In December 1986, we received a call from Moorhead City Manager Bob Erickson about the existence of another car body behind a house on 21st Street in east Moorhead. The house was scheduled for demolition to make way for the railroad underpass about to be constructed there. Bob was excited about the possibility of restoring the car. I visited the car and took some photos. At first glance the car appeared in pretty rough shape. The truck (running gear below the car) was missing as were the seats and control mechanisms. But the family who wound up with it had built a second roof over the original protecting the



car from the elements. The interior wood had been painted but appeared to be in outstanding shape, even the light fixtures were intact. Nailed-on sheeting protected the window glass and the exterior metal appeared sound. The outside had been partially painted over but the number "28" was clearly visible on the side. I was beginning to get excited, too.

Subsequent research revealed the story of the Concordia line and streetcar 28 discussed above. I also contacted Russell L. Olson, author of *Electric Railways of Minnesota*, the definitive source on the subject. Mr. Olson was very helpful and mentioned that in the early 1980s a couple of members of the Twin Cities-based Minnesota Transportation Museum had visited the streetcar and concluded it was an excellent candidate for restoration as a static display, that is, a non-running walk-through exhibit. The MTM began in 1962 to promote the restoration of a Twin City Lines streetcar, number 1300. The effort proved successful. Today the MTM owns and operates four streetcars on private tracks in the twin cities. Other streetcars are in the process of restoration. MTM also runs an excursion steamboat on Lake Minnetonka and conducts tours on the Osceola and St. Croix Valley Railway east of the twin cities. It also owns a number of classic busses from the 1930s to the 1960s.

Lack of funds and a clear plan stalled any local restoration efforts. Before the house was demolished, the owner moved the car into storage on a farm near Barnesville. Over the next decade we heard occasional rumors of restoration plans, sometimes involving the participation of Bonanzaville or Western Minnesota Steam Threshers' Reunion. But nothing concrete developed.

Then it appeared on e-bay. Collections Manager Pam Burkhardt and I discussed options. We figured we could come up with donors who would be willing to financially support retaining the streetcar locally, but CCHS has no facilities for storing such a large artifact. Bonanzaville came to mind. I called Executive Director Steve Stark. Bonanzaville had limited funds for artifact purchases but did have space for the streetcar. Steve agreed to bid on the



Streetcar Number 28 at the corner of 6th St and Center Ave, about 1925. This is one of the few photos we have of Number 28 in service. Note the destination sign reading "Concordia College," in the detail photo at right. CCHS collections.



car. In, literally, the last minute of bidding, a new buyer appeared and won the streetcar for \$960.00.

We were, of course, disappointed. But the winning bidder's online name was "twincitylines," an alternate name for the old Minneapolis St. Paul streetcar company. I contacted Jim Vaitkunas, General Superintendent of the Como-Lake Harriet Streetcar Line of the MTM. Jim confirmed that they were the winning bidders. The MTM plans to restore the car to a running condition and use it on their tracks. They recently acquired a restorable streetcar from the Winona, Minnesota, system and that is their first priority. The MTM members expect to begin work on Number 28 sometime around 2006-2007. Restoration will probably take another two to three years. The truck will have to be built from scratch but he knew of three other museums that had accomplished such a task. He seemed confident MTM could get number 28 up and running.

Continued, next page...

Teachers' Exam, continued.

2. Take any common leaf or flower that you can call to mind and arrange in a space 3 by 4 inches. The design is to show balance.

HYGIENE AND PHYSIOLOGY [5 questions/N.B. the first two questions refer to hygiene and the last three to physiology. The questions on hygiene should be answered in 20 minutes and those in physiology in 30 minutes]

1. (a) Give two practical rules concerning exercise, with a reason for each.
(b) State two practical suggestions with regard to sleep, with a reason for each.
(c) Give two or three good hints on the care of the teeth.
3. (a) Give three uses or functions of the spinal column, and three of the skin.
(b) Give a brief account of the chemical structure of bone.

Exhibit News, continued.

thought touched the American Heartland. TRACES brushes away that dust, unearthing an amazing legacy. As we learn about these stories, may we rise above—and eventually defeat—the prejudices, fears and conflicts that otherwise demean and destroy us.

Visit <http://www.info.co.clay.mn.us/history/pow.htm> for information about German prisoners of war from the Algona camp working in Clay County in the 1940s.

Streetcar, continued.

I told Jim that, frankly, we would have much, much preferred that the streetcar remain in the local area, but that I was glad that they had it and not some private collector in California or someplace. We will be sharing our research and cooperating with MTM as best we can with the restoration. Jim said he would not rule out the possibility of at some point moving the restored Number 28 back to Moorhead for temporary display. Stay tuned!



New CCHS Memberships & Renewals

CCHS extends a special thank you to the following individuals who renewed their memberships or became new members in July and August:

NEW MEMBERS

Kim & John Baird, Fargo
Peter C. Brown, St. Paul, MN
John Ceterski, Moorhead
Mary Hennessy, Fargo
Dennis & Kris Herbranson, Arlington, TX
Adrie Israelson, Wolverton, MN
Joyce Johnson, Glyndon
Miriam Knight, Fargo
Lois Kundert, Fargo
John McCann, Moorhead
Gerald Palmer, Barnesville
Jerry Quam, Fargo
Joe & Betty Richards, Georgetown
Rona Robbins Mears, Dallas, TX
Carol Spichke, West Fargo

RENEWALS

Allen County Pb. Library, Fort Wayne, IN
Erwin & Clarice Backlund, Moorhead
Roland & Carolyn Barden, Moorhead
Robert & Dorothy Belsly, Moorhead
Ona May Brunsvold, Moorhead
Barton J. Cahill, Moorhead
Mark Chekola, Moorhead

Grace Clark, Moorhead
Sara Lee Cook, St. Paul, MN
Adeline Corwin, Ulen, MN
Marlow Davidson, Moorhead
Clare Degerness, Moorhead
Ione Diirro, Moorhead
Paul & Mardeth Dovre, Moorhead
Paul & Joyce Eidbo, Moorhead
Eva B. Felde, Moorhead
Ruth Franzen, Fargo
Mae Gee, Moorhead
Lawrence & Belle Gilbery, Moorhead
John & Nadine Glas, Moorhead
Helen Glawe, Fargo
Janet Gorman, Moorhead
Marilyn Gorman, Moorhead
Edward A. Gudmundson, Moorhead
Ann Gytri, Felton, MN
Carole Lee Hays, Albany, OR
Andre & Emily Hougum, Moorhead
Ardee & Eunice Johnson, Moorhead
James Johnson, Moorhead
Joy Johnson, Moorhead
Lawrence Kava, Barnesville
Kent & Donna Knutson, Moorhead
Virginia Kolba, Moorhead
Gary Landgraf, Moorhead
Evelyn Marie Larson, Fargo
Robert Loeffler, Moorhead
Kathryn Matthees, Moorhead
Tim McLarnan, Moorhead

Roger J. Minch, Fargo
Arloine Mithun, Moorhead
Moorhead Area Public Schools, Moorhead
Donna Nelson, Moorhead
Orlow & Bev Nokken, Moorhead
H. Allen Ohrt, Fargo
Esther Olson, Moorhead
Gary H. & Rebecca Olson, Moorhead
Joseph Pederson, Hawley
Sherwood, Sr. & Marilyn Peterson, Sabin
J. Donald & Naomi Rice, Moorhead
Rigels, Inc., Appliances-TV, Moorhead
Sam Rikhus, Ulen, MN
Ron & Nancy Saeger, Fargo
Anna E. Schneider, Moorhead
Karen Schneider, Moorhead
Maxine Shulstad, Barnesville
D. H. & Margaret Sillers, Moorhead
Steve & Shauna Slabik, Fargo
Roger & Barb Spilde, Moorhead
Bernice Stensgaard, Moorhead
Irene Swenson, Moorhead
Arnold Tranby, Moorhead
Matthew & Kathy Valan, Moorhead
Merlyn & Shirlee Valan, Moorhead
Ruth Wagner, Moorhead
Marguerite Wardeberg, Barnesville
Tom & Sherry Watt, Glyndon
Faye B. Wells, Vancouver, WA
Maxine Workman, Moorhead
Marilyn Wussow, Moorhead

Monthly Results of the Favorite Restaurant poll

In CCHS' current exhibit, Eating Out in Clay County, visitors can vote for their favorite Clay County restaurant, past or present! These are the most recent results:

June 24, 2003 - September 5, 2003

Red Bear - 9	Eddy's - 1
Silver Moon - 3	Fran's - 1
Rex Café - 2	Hi - Ho - 1
Duane's House of Pizza - 2	KFC - 1
M & H - 2	Dairy Queen - 1
A & W - 2	Sarello's - 1
Blimpie - 1	Speak Easy - 1
Chinatown - 1	Speedway - 1

If you don't see your favorite restaurant here, come in to the museum, bring your friends, and VOTE!



Requests, continued

[Note: CCHS can scan your original photos and return them to you.]

Request #3: Our 1936 Buffalo Fire pumper truck needs a winter coat! Actually, we need tarps cover the entire vehicle to protect it from dust in its storage building. The Buffalo is approximately 23 feet long, 7 feet wide and 7 feet high. Two or three tarps covering that area would be just fine. Used tarps are acceptable if they are clean and have no grease or paint residue.

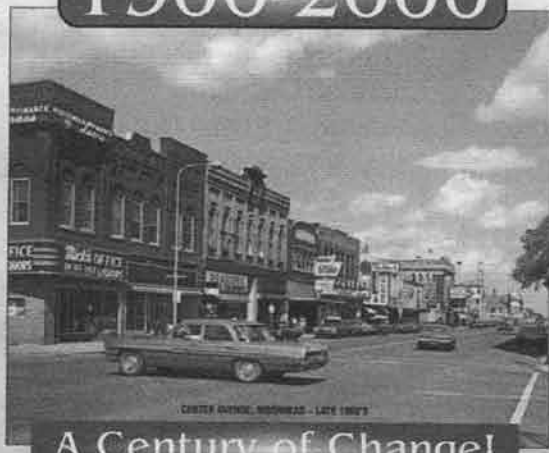


Request #4: Our June 2004 exhibit will feature some of the many wedding dresses in our collections. We will need more dress forms than we currently own. If you have a dress form (in good condition) that you are willing to donate, bring it to the museum. If you have one we could borrow, give us a call. We

Continued, page 15...

The Last One Hundred Years in MOORHEAD MINNESOTA

1900-2000



A Century of Change!

Published by Heritage Publications in collaboration with the Clay County Historical Society

Catch up on your reading this Fall!

Moorhead, 1900-2000: A Century of Change is full of historic photographs and stories that provide the story of Moorhead. See how much Moorhead has changed!

Fargo, ND, From Frontier Village to All America City, 1875-2000 is a unique collection of photos and stories chronicling Fargo's first 125 years.

These high-quality, paper cover books, published by Heritage Publications of Hendrum, MN, are fundraisers for the Clay and Cass County Historical Societies.

Pick up your copies today at the Clay County Museum & Archives in the Hjemkomst Center, 202 1st Avenue North, Moorhead, or send your check or money order for \$23.00 to CCHS, PO Box 501, Moorhead, MN 56561.

Call CCHS at 218-299-5520 for more information.

Calendar

Aug.-Sept.	Red River Valley Woodcarvers Club Display	Nov. 27	Thanksgiving Day, museum closed
Sept. 18 & 19	CCHS Annual History Tour "Mines & Pines" - Hibbing, Virginia & Grand Rapids	Dec. 2	CCHS Holiday Volunteer Party (tentative)
Sept. 26	Minnesota Alliance of Local History Museums Fall Conference, Hjemkomst Center	Dec. 11	Minnesota Historical Society Northern Lights Curriculum Teacher Training, Hjemkomst Center
Oct.-Dec.	Artists Workshop, hall display case	Dec. 13	CCHS Holiday Open House
		Dec. 25	Christmas Day, museum closed
			Schedule subject to change

Sponsor, Patron, Sustaining and Supporting Memberships

Please help us thank these members for supporting the Clay County Historical Society by patronizing their businesses:

SPONSOR (\$500+)

Join Now!

PATRON (\$200-\$499)

Mac's, Inc.

Thibedeau & Co. & Richtman's
Printing

SUSTAINING (\$100-\$199)

Chamber of Commerce of Fargo
Moorhead

City of Hawley

CM Associates, Richard T.

McMurray, Annandale, VA

Dilworth/Glyndon/Felton ISD

First National Bank of Hawley

Hawley Public Schools

Korsmo Funeral Service

Moorhead Area Public Schools

Moorhead Drug Company

Moorhead Kiwanis

Rigels, Inc., Appliances-TV

Sellin Brothers, Inc.

State Bank of Hawley

State Bank of Moorhead

Vikingland Kiwanis

SUPPORTING (\$50-\$99)

Bentley & Bentley, DDS

Cass-Clay Creamery, Inc.

City of Barnesville

Eventide

McLarnan, Hannaher &

Skatvold, P.L.L.P.

Moorhead Area Retired

Educators Association

Moorhead Midday-Central Lions

Stenerson Lumber

Thrivent Financial for Lutherans

Ward Muscatell Automotive

Wells Fargo Bank MN, N A, Mhd

Wright Funeral Home

Thank you also to these individuals in the Patron, Sustaining, and Supporting membership levels:

Individual Patron (\$200-\$499)

Ronald & Katherine Mentjes

Individual Sustaining (\$100-\$199)

Robert & Selma Anderson

John Caron

Esther Olson

Lynne Olson

Lloyd & Bev Paulson

Elsie Pitsenbarger

Bill & Evelette Snyder

Tom & Sherry Watt

Individual Supporting (\$50-\$99)

Kelly & Marjorie Aakre

Rod & Audrey Angstman

Roland & Carolyn Barden

Peter C. Brown

Dr. Yvonne Condell

Jim & Portia Danielson

Dorothy Dodds

Paul & Joyce Eidbo

Carroll & Joan Engelhardt

Mr. & Mrs. Michael France

Burton & Catherine Grover

John & Beverly Hest

Audrey Jones

Don & Alvina Lein

Darren & Jane Leno

Ethel R. Medalen

Robert & JoAnn Nyquist

E. Robert & Donna Olson

Charlotte Onstine

Maynard & Elaine Oss

Larry & Elsie Quam

Davis & Hazel Scott

Terry Shoptaugh & Deborah Janzen

Carol Spichke

Jim & Chris Stenerson

Bruce N. Thorson

Phyllis Thysell

Ron & Deanna Ulven

Mark & Donna Voxland

Arthur & Marie Wenner

Requests, continued

need to match dresses to forms as soon as possible.

Request #5: The 50th Anniversary of Western Minnesota Steam Threshers' Reunion was held at Rollag over the Labor Day weekend. Congratulations to everyone "on the hill" for making the 50th Anniversary Reunion great! The 2003 yearbook is truly amazing. I checked our WMSTR pinback button collection against those pictured in the yearbook and noticed that we are missing more than I expected. Please, look around your house and see if you can help us fill in the collection.

Yearbooks: We are missing the 1957 [1st edition], 1990, 1997-2002 editions.

Pinback buttons: We are missing the early pinback buttons dated 1955, 1956, 1957 and 1958.

For the 1970s, we need the 1871-1971 Rollag Area

Centennial with a graphic of a log cabin button as well as the 1976 -1979 Ladies'/Women's Activities buttons.

For the 1980s, we are missing the 1980-1982 and 1984-1985 Ladies'/Women's Activities buttons. Other 1980s we need are 1982 and 1986 -1989. We need *both* 1987 buttons showing the Minneapolis Expo button and the Expo Limited Edition. For 1988, we *only* need the Otto Expo Limited Edition.

For 1990 we *only* need the New Way Air Cooled engine button. For 1992, we need the *Have I Got a Case For You*. The other 1990s needed are 1991 and 1993 -1995.

We will welcome donations for the miscellaneous buttons: *Happiness Is Playing At Rollag*, *Music comes Alive at Rollag!*, *I Support Rollag's New Potty*, *Gallor Rollag Rowdies*, *Briden's Christmas 2001*, *Every Day is Kid's Day at Rollag*, *Don't yell at me*, *I'm only a Volunteer* and *WMSTR Fever*, *Catch it!*

EATING OUT IN CLAY COUNTY

Our tastiest exhibit yet!

From restaurants and picnics to hospital food and school lunch—menus, lunch boxes, photos, luncheon sets, church dinners, archaeological saloon remains, and more—Every way that residents of Clay County eat—out!

August through September:



Exquisite carvings of whimsical and realistic subjects by the Red River Valley Woodcarvers Club in the CCHS hallway display case



Vote for your favorite Clay County restaurant and menu item, or email or send your choice to us!

lisa.hanson@ci.moorhead.mn.us

Thank you to the businesses, organizations & individuals who donated or lent time & materials for this exhibit!

Auto Salvage, Inc., City of Moorhead, Clay County Social Services WIC Program, Fry'n Pan Restaurant, Heglund Lutheran Church, McDonald's, MeritCare Clinical Nutrition Services, MeritCare Food Service, MeritCare Material Services, Perkins Family Restaurant, Red Bear Grill & Tavern, Speak Easy Restaurant

Clay County Museum Hours: 10-5 Monday-Saturday, 10-9 Tuesday, 12-5 Sunday
Hjemkomst Center, 202 1st Avenue North, Moorhead, MN ♦ FREE ADMISSION



CLAY COUNTY HISTORICAL SOCIETY

MEMBERSHIP FORM

YES! I would like to become a member of Clay County Historical Society

- ☐ Individual* \$20 minimum ☐ Sustaining \$100 minimum
☐ Family* \$35 minimum ☐ Patron \$200 minimum
☐ Supporting \$50 minimum ☐ Sponsor \$500 minimum

*Businesses are not eligible for Individual and Family membership levels

CCHS MEMBERSHIP BENEFITS:

- ◆ Support preservation of your heritage
- ◆ Bi-monthly newsletter
- ◆ Discount on Acid-Free Preservation supplies
- ◆ Discount on photo reproductions from archives
- ◆ \$1 off admission to Hjemkomst Center Exhibits
- ◆ Invitation to all CCHS events
- ◆ Access to all CCHS Tours
- ◆ Voting Privileges

In addition to the great benefits listed above, Supporting, Sustaining, Patron and Sponsor members a certificate ready to frame and display, and a listing in all CCHS bi-monthly newsletters.

To become a CCHS Member please complete and return this form or a copy of this form to:

CLAY COUNTY HISTORICAL SOCIETY
PO Box 501, Moorhead, MN 56561-0501
218-299-5520

Visit our website! www.info.co.clay.mn.us/history

Name: _____

Business (if applicable): _____

Street Address: _____

City, State, ZIP: _____

Phone: _____ E-mail: _____

CLAY COUNTY HISTORICAL SOCIETY

Hjemkomst Center
202 1st Ave N
PO Box 501
Moorhead MN 56561



Non-Profit
Organization
U.S. Postage Paid
Moorhead, MN
56561
PERMIT NO. 494

ADDRESS SERVICE REQUESTED



We're on the web!
www.info.co.clay.mn.us/history