

# CLAY COUNTY HISTORICAL SOCIETY



CCHS Newsletter

May/June 2001

Vol. XXIV. No. 3



**Scandinavian Hjemkomst Festival June 21-24**

..... including .....

**Pioneer Play - June 21 & 23 (See Page 5) and  
Bergquist Cabin Open House June 21, 22 & 23 (See Page 14)**



Clay County Veterans march down Center Avenue in Moorhead in a welcome home parade; May 1947. Many World War II vets filed discharge records with the county. See associated story Pages 6-10.

*Courtesy of Climate Architects: The Moorhead Chamber of Commerce 1927-1977*

## President's Report

By Norman Roos, President

The "President's Report" will return in the July/August Newsletter. See election of new directors on Page 14.



## CCHS web site coming soon

CCHS is in the process of developing a web site, which will be on-line soon.

Clay County has generously offered to host our site on the County's web server. Our thanks go out to County Administrator Vijay Sethi and Geographical Information Systems head, Mark Sloan!

The address will be [www.info.co.clay.mn.us/history](http://www.info.co.clay.mn.us/history).

CCHS Archivist Mark Peihl has been working on the design and content of the site. Peihl noted that the CCHS site will have vital information about the Clay County Historical Society including the Museum and Archives, plus materials that can be researched on-line.

The Moorhead sections for the 1891 and 1915 City Directories and a 1933 Rural Resident Directory are ready to go on-line once the site is up and running. Plans are to scan in more directories as time allows.

Our site will include links to the Hjemkomst Center, the Fargo Moorhead CVB (Convention and Visitors Bureau) and other county historical societies.

Watch for this exciting new tool as we continue to fulfill our mission statement to "collect, preserve and disseminate knowledge of Clay County's history" in ever newer and more innovative ways.

## Upcoming Schedule:

Preservation Workshop	May 17
<i>Keeping in Touch</i> hall exhibit closes	June 11
Bergquist Cabin Open House	June 21, 22 & 23
Scandinavian Festival	June 21-24
Pioneer Play <i>Home is Where the Heart Is</i>	June 21 & 23

Call 299-5520 for more information.

## CCHS Wish List: City Directories

CCHS Archives has a complete set of Fargo-Moorhead Directories..... complete, that is, from 1891 through 1994. We would like to update the collection to the present.

If you have directories dating between 1995 and 2001, please contact Mark at 218-299-5520. Thanks!

### E-mail addresses:

[margaret.ristvedt@ci.moorhead.mn.us](mailto:margaret.ristvedt@ci.moorhead.mn.us)

[mark.peihl@ci.moorhead.mn.us](mailto:mark.peihl@ci.moorhead.mn.us)

[pam.burkhardt@ci.moorhead.mn.us](mailto:pam.burkhardt@ci.moorhead.mn.us)

Web Site: [www.info.co.clay.mn.us/history](http://www.info.co.clay.mn.us/history).

## CLAY COUNTY HISTORICAL SOCIETY



Hjemkomst Center, 202 1st Ave. N., PO Box 501

Moorhead, Minnesota 56561-0501

Phone: 218-299-5520/Fax: 218-299-5525

### BOARD OF DIRECTORS

Norm Roos, President, Hawley  
 Donna Voxland, Vice Pres., Moorhead  
 Joyce Haug, Secretary, Hawley  
 Rodney Erickson, Treasurer, Moorhead  
 Alvin Swanson, Moorhead  
 Marion Gee, Moorhead  
 Arvid Thompson, Barnesville  
 Mertlyn Valan, Moorhead  
 Lee Kolle, Borup  
 Ben Brunsvold, Cnty. Rep., Moorhead  
 Helen Rudie, Moorhead  
 Steve Aakre, Hawley

### STAFF

Pam Burkhardt, Collections Manager  
 Mark Peihl, Archivist  
 Margaret Ristvedt, Office Manager  
 Alvera Murch, Bookkeeper

### NEWSLETTER PRODUCTION

Margaret Ristvedt, Editor/Publisher  
 Pam Burkhardt, Contributor  
 Mark Peihl, Contributor



## The Language of (spring) Flowers

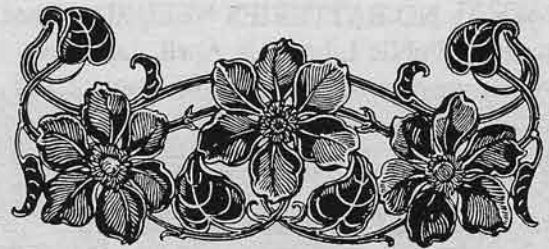
*Hello? Florist? I want to order a spring bouquet with daffodils, no peonies, no columbine,...! No, wait! I'll just buy a bi-i-ig box of chocolates!*

Our recent snowfall did nothing to remind us that it is really spring outside. Snow [or a snowflake] represents winter just as a leaf represents the fall. From the Renaissance through the Victorian era, certain flowers or plants were assigned various attributes. A careful selection of flowers was as good as a written message to anyone familiar with the same "code." So, to pay a final tribute to our *Keeping in Touch* exhibit, closing June 11, we present a few spring flowers and plants with the message(s) each one would send.

The primary list was taken from the book *Twentieth Century Etiquette, A Ready Manual for all Occasions*, written by Annie Randall White and published in 1900. The items in brackets are alternative meanings taken from other sources. In the Victorian era over 200 books were written on the language of flowers. I hope the correspondents agreed on a source. As you can see, buttercups and tulips sent with ivy would send a mixed message

Richard Herring's Floral Park, Hitterdal, CA 1917. Herring, an immigrant from Berkshire, England, came to know and admire flower gardens during his boyhood in England. After settling in Hitterdal, Herring put his knowledge to good use by designing a botanical showplace. The floral garden abutted the Northern Pacific Railroad tracks and trains would sometimes stop an extra fifteen minutes so passengers could get off and make a tour of it. The railroad even published a pamphlet advertising the Floral Park.

Apple-Blossom	Preference
Buttercup	Riches [childishness]
Columbine	Folly
Cowslip	Pensiveness
Daffodil	Chivalry [regard]
Dandelion	Coquetry
Hyacinth, Blue	Constancy
Ivy	Friendship: matrimony
Lady's Slipper	Capricious beauty
Lilac	First emotion of love
Lily	Purity or modesty
[Lily of the Valley	Return of happiness]
Mint	Virtue
Narcissus	Egotism [self-esteem]
[Orange Blossom	Purity equals Loveliness]
Orange Flower	Chastity
[Pea, Sweet	Departure/delicate pleasures]
Peony	Anger
Star of Bethlehem	Reconciliation
Tulip	Declaration of love
Violet	Love[fame]
[Violet, Blue	Faithfulness]



## Outreach Displays

	Open	Close
Barnesville Public Library	Mar. 26	July
Hawley Public Library	Apr. 4	July
Moorhead Public Library	Apr. 6	July
Fargo Moorhead CVB	May	Sept.

The Barnesville Public Library is CHOCOLATE CENTERED. By the box or by the bar, this is a "sweet" display. Warning! This display contains no calories, but is high in temptation!

SOME ASSEMBLY REQUIRED opened in April at the Hawley Public Library. Remember what you built with *your* Erector set, Lincoln logs, Legos or Tinker Toys? You might even be tempted to dig out an old jigsaw puzzle or two. We don't want to *bug* you, but check out the game in this display. It was invented in Minnesota!

Simple toys with NO BATTERIES NEEDED opened at the Moorhead Public Library in April. Look for your favorite toys amongst the marbles, crayons and toys for the doll house or sand box. What simple toys were your favorites?

The Fargo Moorhead Convention and Visitor's Bureau, just off 1-94 will be ROLLIN' ON THE RED this summer. Visitors can view a photo display highlighting steamboats on the Red River, admire an early 1930s swimsuit and check out artifacts from early Moorhead saloons while learning about our fascinating river! ~ Next step? Visit the Hjemkomst Center, of course.

## Monetary Donations March/April 2001

Douglas R. Heidenreich, St. Paul  
Phil & June Felde, Moorhead  
Hickson Pleasant Senior Citizens, Hickson  
Donna & Eric Chalimonczyk, Moorhead  
Sara & Dean Sather, Fargo  
Tim Nowak, Cheyenne WY  
Swedish Cultural Heritage Society, Fargo/Moorhead  
Dr. Yvonne Condell, Moorhead  
Kathrine Erickson, Moorhead  
Catherine & Burton Grover, Bellingham WA

## Artifacts & Donors

MARCH/APRIL 2001

### Donors include:

Moorhead: Clay County Emergency Management,  
Foss Associates, Charlotte Onstine,  
Bonnie Rehder, Dale Johs, Audrey  
Thomas  
Glyndon: Don & Alvina Lein, Bob Backman  
Hawley: Margaret Ristvedt  
Borup: Lee Kolle

### Artifacts include:

Photo of Dan McDonald, Clay Co. Sheriff & Archie Whaley beside a snow-equipped motorcycle with a side car; 16 page transcript, *My Military Life* a WWII account by Audrey Thomas; the *Praeseptor*, MSTC, 1887-1937 Golden Anniversary issue; a photo of cousins Hazel Bradford & Ellen Bradford taken in the late 1910s; a violet ray machine\* with a wooden case; the first (?) facsimile machine in Moorhead - a Xerox telecopier used before 1980 by Foss Associates (donation includes training booklets and special paper); a cookbook, *Chinese Dishes* (undated) from the American Cafe, Fargo ND including the history of restaurant as well as a collection of needlework booklets and Fairway spice tins; and two boxes containing Civil Defense radiation detection units dated April 1963; numerous items added to the Bowman/Onstine collections include photos of individual Moorhead High School students in the mid-1930s, (3) photos of former students at the 50 reunions of the classes of 1933, 1934 and 1935, a few 1930s class play and graduation programs, report cards from Moorhead Public Schools from 1923 to 1949, a banner-hankie from the Hubert H. Humphrey Metrodome Project Tour July 16-17, 1988 given to their volunteers, graduation dress, wedding dress, collar sets (some hand made), two booklets, *Post Office Souvenir* Moorhead, Minnesota, February 12, 1915 and *Souvenir of Moorhead, Minnesota* 1905-1906.

\*Violet ray machine was a quackery device sold from the 1930s to 1951. These devices came with several hollow glass attachments. The 'rake' was for the scalp. The 'Y' attachment treated the neck and throat and the 'O' was for general use. Supposedly, "radio energy" from the coil created ozone and ultraviolet light. the machine was also reputed to remove dandruff, aid in stopping hair loss, treat gonorrhea, remove facial blemishes, and improve the nervous and circulatory systems. In 1951, a judgement was found against the White Cross company for making fraudulent claims.



# Pioneer play to be presented during Scandinavian Hjemkomst Festival



KIRSTEN ♥ 1854

*Kirsten's story is one shared by many of the immigrants who have come to settle in America. It's a dramatic journey, filled with hardships and hope.*

The pioneer play *Home is Where the Heart Is* will be presented at the Hjemkomst Center during the Scandinavian Hjemkomst Festival on June 21 and 23.

The play depicts a nine year old, Kirsten Larson, who immigrates from Sweden to Minnesota with her family in 1854.

Historically accurate, the play, like the immigrant experience, shows the

wide range of emotions experienced by the Larson family. The joy of new discoveries and the excitement of adventure is often tempered by the loss of old friends and customs. The play takes the Larsons from Sweden to the docks of New York, a boarding house in Chicago and finally up the Mississippi River to their new home in Minnesota.

Cast roles include Kirsten's mother - played by Hannah Chapman, her father, played by Michael Champ, and cousins Lisbeth and Anna, played by Brianne Melle and Amy Vitalis-Hoffmann. The roles of Kirsten® and her good friend Marta are yet to be cast. Sarah Wassberg will play the violin for set changes and Rachel Wassberg will usher. Karen Myran of Hawley is the Casting Director, Vicki Paulsen is the Director and Jan Nelson is in charge of costumes, props and stage settings.

The play, from the American Girls Collection®, Pleasant Company Publications, is designed to help you imagine growing up in times past and

to bring history alive. *Home is Where the Heart Is* is being co-sponsored by CCHS and the Swedish Cultural Heritage Society.

## Show Time: 1 p.m.

Thur. & Sat.

June 21 & 23



### An 1850s Theater

There weren't many theaters in 1854, so traveling groups performed wherever they could. In St. Paul, Minnesota - the big city nearest to Kirsten - plays were performed in Cataract Hall, on the third floor of Spooner's Building.

[7-741]

Page No. \_\_\_\_\_  
 Supervisor's District No. 4  
 Enumeration District No. 234

Eleventh Census of the United States.

## SPECIAL SCHEDULE.

## SURVIVING SOLDIERS, SAILORS, AND MARINES, AND WIDOWS, ETC.

Persons who served in the Army, Navy, and Marine Corps of the United States during the war of the rebellion (who are survivors), and widows of such persons, in City of Moorhead, County of Clay, State of Minnesota, enumerated in June, 1890.

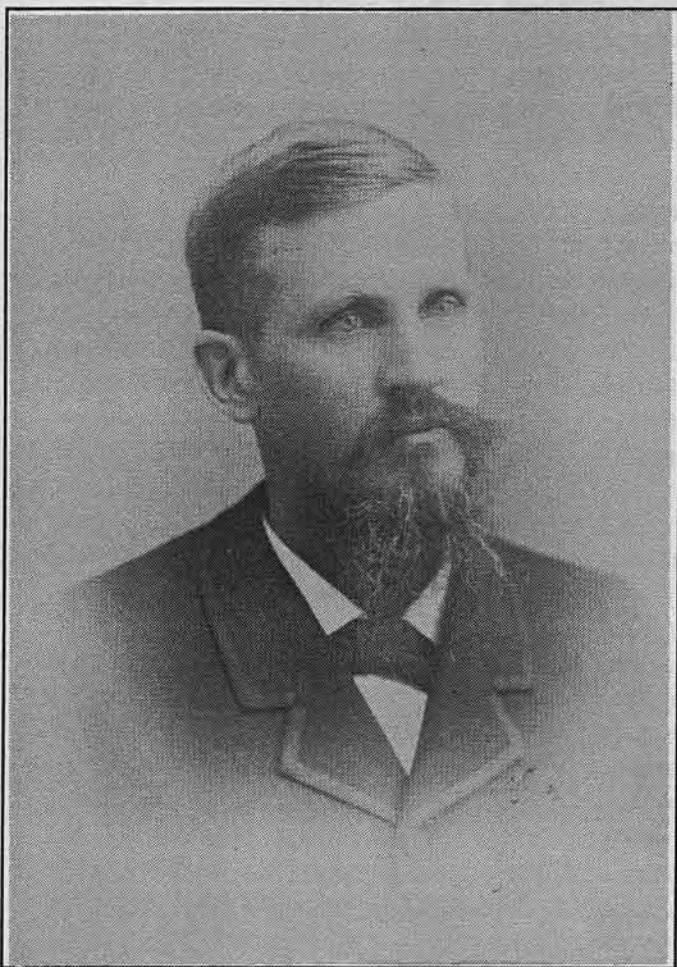
Hevinsley  
 Enumerator.

From Schedule No. 1.		NAMES OF SURVIVING SOLDIERS, SAILORS, AND MARINES, AND WIDOWS.	Rank.	Company.	Name of Regiment or Vessel.	Date of Enlistment.	Date of Discharge.	Length of Service.		
House No.	Family No.							Yrs.	Mos.	Days.
1	2	3	4	5	6	7	8	9		
①	4	Sabin, Augustus D.	Private	A	124 Ind. Inf	18 Dec 1863	20 Apr 1865	1	9	2
②	5	Evans John	Private	E	57 Ind. Inf	1863	Aug 1865			1
③	6	Battles Felix	Corporal	G	18 U.S. Inf	1 Nov 1864	5 Jan 1865	2	4	
④	7	Bore Charles H.	Private	D	100 Ind. Inf	22 Aug 1862	8 June 1865	2	9	16
⑤	14	Batter Stephen				186	186			
⑥	44	Lamphere George H.	Private	B	16 Conn. Inf	21 July 1862	28 Feb 1865	2	7	7
⑦	152	Chinneth James L.	Private	J	25 Iowa Inf	20 Aug 1862	30 June 1865	1	10	10
⑧	159	Oliver James W.	Private	F	121 Ind. Inf	12 Dec 1863	16 Aug 1865	1	8	4
⑨	166	Sharp James H.	Private	A	134 Penn. Inf	186	186			
⑩	174	Thomas Cyrus	2nd Lieut	B	11 Ver. Art	7 June 1862	7 June 1865	3	0	0
⑪	210	Nelson Ole E.	Private	D	6 Ind. Inf	27 Dec 1862	17 Dec 1865	2	11	20
⑫	48	Thompson George	Sergeant			19 Apr 1861	19 July 1861	3		
Post-office Address.		Disability Incurred.		Remarks.						
10		11		12						
1	Moorhead		None	Has lost one eye since from effects.						
2	do		x	L						
3	do		x	L						
4	do		x	L						
5	x		x	L						
6	x		Lost left arm	L						
7	x		x	L						
8	x		x	L						
9	x		x	L						
10	x		Wounded in left leg	L						
11	x		x	x						
12	x		x	x						



# Overlooked Genealogy Resources

By Mark Peihl



Long time publisher of the *Moorhead Daily News* George N. Lamphere (Number 6 on the Civil War Veterans Census at left) served as a Private in Company B, 16th Connecticut Infantry. He lost his left arm and was discharged in Feb. 1865.

May Burnham Collection

Each year several hundred researchers visit the CCHS archives. Hundreds of others call, email or post letters to us requesting information. About half of these folks are genealogists. Our collections reflect that fact - we've been pretty aggressive in collecting materials helpful to family historians. Most of our researchers are satisfied with the usual sources - US census records, naturalization records, our index to death and marriage records filed in the Clay County Recorder's office and newspapers for obituaries. Sometimes, however, I can persuade researchers to look a bit deeper, to plumb some resources often overlooked by genealogists. Last fall the Moorhead's Lake Agassiz Regional Library asked me to provide a program in a

lecture series for genealogists. I jumped at the chance to focus people's attention on these fun but obscure tools. Some we have featured here before: World War 1 Draft Registration Cards and Alien Registration Forms (Nov/Dec 2000), Great Northern and Northern Pacific Personnel File Indexes (Sept/Oct 2000), Sanborn Fire Insurance Maps (March/April 1992, Nov/Dec 1995). Here we'll discuss several other sources and different ways to use some old favorites.

## TAX RECORDS

Until the mid 1960s Minnesota counties levied taxes on one's personal property - cattle, furniture, machinery, sewing machines and the like. Tax appraisers visited homes and assessed valuation on the stuff people owned. The resulting *Personal Property Tax Assessment Rolls* reflect the number and valuation of a wide variety of property. They provide a very detailed look at what a family owned and its relative affluence as compared to its neighbors. They are also good tools to just place a family member in a particular place at a particular time. Nearly every householder had personal property to tax. The tax man was less likely to miss a family than was a census enumerator. CCHS holds *Personal Property Tax Assessment Rolls* for most or all Clay County villages, cities or townships for 1872 through 1879 or 1880, a scattering of townships' rolls for the mid 1880s and for the years 1927, 1935, 1945 and 1955. We will soon be adding, through the cooperation of Clay County Assessor Loren Johnson and the State Archives, the *Tax Rolls* for 1965 and 1975. We'll also be purchasing microfilm copies of the *Tax Rolls* from the State Archives for the years 1930-31, 1940-41, 1950-1951 and 1960.

CCHS also holds some *Tax Lists*. These records hold less information than the *Tax Rolls* but record who paid taxes, how much and when. We hold some from the 1880s and we will also soon be receiving, through the cooperation of the Clay County Treasurer Betty Swetland and the Minnesota State Archives, *Tax Lists* for the years ending in five between 1905 and 1975. The Red River Genealogical Society has received the *Lists* for the years ending in six and seven. Basically, all these tax records will make it possible to track the residence and movement of tax paying families every five years or so through out the 20<sup>th</sup> century and before.

(Continued on Page 8)

## Overlooked...

(Continued from Page 7)

### FARM CROP AND LABOR REPORTS, 1918

During World War 1, the Minnesota Department of Public Safety conducted a statewide farm census to determine the adequacy of the state's food supply. We will soon be buying microfilm copies of this census for Clay County. Information recorded includes the name and ethnicity of each county farmer, kind and acreage of each crop planted, numbers and type of livestock raised and the amount and type of additional farm labor required including the desired ethnicity and gender of the needed laborer(s). These records will also help track rural residents whether they owned land or not.

### WORLD WAR 2 VETERANS' RECORDS

We received these cards from the Clay County Veterans' Service Officer. They record information about discharged World War 2 era veterans. Information recorded varies but can include the name of the vet, the names of his parents and/or wife, any children, his address at time of discharge, address before service, birthplace and date of birth, age, serial number, social security number, education level completed, dates and branch of service, type of discharge, civilian occupation and military specialty and other information. These records are only for World War 2 era vets. The Clay County Recorder's Office also holds discharge records filed voluntarily by many other Clay County servicemen and women.

### LAND TRANSACTION RECORDS

These 23 volumes (duplicate microfilmed volumes from the Clay County Recorder) index the buying and selling of land and other transactions by the names of the grantee (buyer) and the grantor (seller). They are in two series: *General Land Indexes* (grantors, 1873-1910; grantees 1898-1909) and *Reception Books* (grantors, 1873-1947; grantees, 1899-1928). The *Indexes* list warranty and quit claim deeds, assignment of mortgages, sheriff's sales, and some other records; the legal description of the property involved, when the transaction occurred and when it was recorded in the Recorder's Office. They also note the book and page numbers where the original document can be found in the Recorder's Office. These can be tremendously helpful in tracking when some one moved to Clay County (and bought land) and when they left (and sold the land). The full deeds at the courthouse sometimes list the seller's new address; in other words, where he or she moved after leaving Clay County. The *Reception Books* also index land

transactions and lots of other records including contracts, articles of incorporation and the taking out and satisfying of mortgages.

### MINNESOTA STATE CENSUS

Most of our genealogists are familiar with the US Censuses conducted every ten years since 1790 by the federal government. (For privacy reasons, the schedules are not made public for 72 years - the life expectancy of an average American when the legislation was approved. The 1920 rolls are the most recent ones available. The 1930 schedules will be released April 1, 2002. We will be buying microfilm of the Clay County rolls then.) Many, however, are not aware that the state of Minnesota did excellent censuses in the off years - 1875, 1885, 1895 and 1905. Especially helpful are the '85 and '95 rolls which help bracket the missing 1890 US census (those schedules were destroyed before microfilming after a fire in the 1920s). Information recorded varies from year to year but is similar to the federal counts. Name of each member of the household, sometimes their street address, personal description, age, occupation and the birthplace of the person and his or her parents are recorded. In 1895 the state asked each male over 18 how long in years and months he had lived in Minnesota and in that enumeration district (village, township, ward of city, etc). In 1905 all residents regardless of age or gender were asked these questions. The responses can be very valuable for tracking movements of ancestors. We hold the rolls covering Clay County for all four censuses. The Moorhead Lake Agassiz Regional Library has the rolls for the whole state. Incidentally, North Dakota also conducted state censuses in 1915 and 1925. The Fargo Public Library has recently obtained complete microfilm copies of these schedules.

### 1890 CIVIL WAR VETERANS AND WIDOWS CENSUS

Although the 1890 US census population schedules are not available, the *Special Census of Civil War Veterans and Widows* does exist. By 1890 most Civil War vets were approaching middle age. The Census Bureau made a special effort to record information about these men and their widows. We hold the microfilm rolls covering Clay County veterans. Information recorded includes the name of the former soldier, sailor or marine and his widow, his rank, company and regiment or the vessel he served on, his enlistment and discharge dates, length of service, his post office address, any disabilities he incurred and remarks. The disability lines often read, "wounded in wrist,"

(Continued on Page 9)



# Personal Property Assessment of the Town

PROPERTY OWNERS IN ALPHABETICAL ORDER.  (Care should be taken to make every Name and Figure plain and distinct.)	No. of School Dist.	Total Value Equalized by the State Board Dollars	Total Value Equalized by the County Board Dollars	Changes made by the Town Board Review. Dollars	Value of all Property in- cluded in the thirty items as returned by Assessor Dollars	1 HORSES.				2 CATTLE.				3 MULES and ASSES of all ages		4 SHEEP and all ages		5 HOGS		6 WAGONS and Carriages			
						Under three years old		Three years old and over		Under two years old		Cows two yrs old and over		All other cat- tle two years old and over		Value in Dollars	No.	Value in Dollars	No.	Value in Dollars	No.	Value in Dollars	No.
						No.	Value in Dollars	No.	Value in Dollars	No.	Value in Dollars	No.	Value in Dollars	No.	Value in Dollars								
								Dollars	Dollars	Dollars	Dollars	No.	Value in Dollars	No.	Value in Dollars	No.	Value in Dollars	No.	Value in Dollars	No.	Value in Dollars	No.	Value in Dollars
Molin Gustav	15	410	415		348					6	36	6	65	5	112			9	13	3	12		
Murphy James	7	302	303		274			2	135	2	12	2	25								10		
Mather J. W. &	7	303	294		280			1	40			2	24					2	3		15		
Myhre Martin	15	409	418		379					1	6	2	24	3	80			2	5	2	30		
Nickelson Lars	15	344	343		293					2	11	4	50	3	82			10	18	2	30		



In 1879 Eglon Township pioneers Gustav and Kristine Molin (shown here about 1871 with their first child, Emma) owned 17 cattle, 9 sheep, 1 hog, a wagon and a watch. (See the tax assessment roll at left. The total value of their personal property was \$348, somewhat more than the township average of \$283.

"chronic rheumatism from exposure" or "missing right arm." In the entry for Caroline Day, widow of David Day, the line reads, "died in prison at Andersonville." Remarks include references to reenlistments or transfers. Armed with this information, researchers with Civil War veteran ancestors can turn to the numerous regimental histories published after the war to get a sense of what the guy's wartime experience was like.

## OTHER WAYS TO USE COMMON SOURCES

Plat books can be very helpful in tracking ancestors. The plats are township maps showing property ownership. CCHS has a good selection of these tools from 1898 to the present. But what if your family rented rather than owned their land?

(Continued on Page 10)

## Overlooked...

(Continued from Page 9)

*Personal Property Tax Rolls* (see on Page 8) can help, but several of the plat books also include rural resident directories. The 1933 and 1939 plat books include such lists. Apparently taken from the *Personal Property Tax Rolls*, they record the name of the taxpayer (partnerships and businesses included), his post office and school district, the valuation of his property and the number of cows owned. (Through the help of CCHS Work Study Student Eric Mimnaugh, the 1933 list will be searchable through our web site soon.) The '33 and '39 books also list residents of towns and unincorporated villages as well as farmers. Other plat books from 1951 to the present include rural resident directories.

Likewise, the familiar *Polk's Fargo and Moorhead City Directories* are also often helpful in locating rural residents. Between 1954 and 1970, the Polk's Directories listed Cass and Clay County farmers and

their addresses. The directories are standard sources for researchers with ancestors in Fargo-Moorhead. By tracking year by year, it's possible to see when the relatives arrived in the area and when they left. But they can be used other ways. After 1928, the directories list entries by street address. It's possible to track everyone who lived in your house, for instance. A couple of times, people looking for photos of their home in years past have been able to see who the neighbors were at various times and actually contact them to find photos showing both homes. One woman a few years ago was looking for her birth father. We found from the directories when he was in Moorhead and his employer's name. She was able to contact people who had worked with her father, remembered him and were able to provide important information - including where he moved after leaving Moorhead.

DVA-233				VETERAN'S RECORD		N.L.	
NAME Burtness Halvor Oliver		NAME OF: Wife: Mother: Louise Father: Pete		CHILDREN None			
PRESENT ADDRESS R#2 Ulen, Minnesota		LAST ADDRESS PRIOR TO SERVICE R#2 Ulen, Minnesota		PHONE NO. 1-3R2			
BIRTHPLACE Ulen, Minnesota		DATE OF BIRTH Jan. 13, 1913		AGE 33		SOCIAL SECURITY NO. None	
SERIAL NO. 37 279 837		RANK & ORGANIZATION E/5		EDUCATION - Circle highest grade completed: Grammar 1 2 3 4 5 6 7 8 High School 1 2 3 <input checked="" type="radio"/> College 1 2 3 4			
DATES OF SERVICE In: June 3, 1942 Out: 12-3-45		RECORD OF SERVICE ETO NATC MTO USA		CLAIM: C Date			
TYPE OF DISCHARGE Honorable		REASON FOR DISCHARGE Convenience of Government		Filed Dec. 3 Denied <input checked="" type="checkbox"/> Approved Amount \$			
CIVILIAN OCCUPATION Farming		MILITARY SPECIALIZATION Anti tank Military Police		OCCUPATIONAL HANDICAPS None DISCHARGE RECORD Reg. of Deeds County Clay			
SERVICES							

Halvor Burtness of Ulen was one of the many returning World War II vets to file a "Veteran's Record" with Clay County.



## - origins of the folksong

# Remember the Red River Valley

The following is courtesy of Kristi Groberg, Research Director for the Red River Valley Exhibit, in the Hjemkomst Center.



The popular folk song "Red River Valley" is generally thought to be a derivation of James J. Kerrigan's "In the Bright Mohawk Valley," which was first recorded as sheet music in 1896. Fifty years later this same myth persisted - albeit rightly so in its own setting-about the then still popular song. When Edith Fowke included it in Folk Songs of Canada in 1954, she noted that among cowboys in the American West, the song is about the Red River that flows between Texas and Oklahoma, but among inhabitants of the Red River Valley of the North, it is associated with the Red River that forms the border between North Dakota and Minnesota and drains into Lake Winnipeg in the Canadian Province of Manitoba. Fowke continued to trace the roots of the song and by 1966 came to believe that it was known and sung in Canada during the 1869 Riel Resistance - also known as the North-west Rebellion or Red River Rebellion - and likely existed as a Metis folk song even earlier and originally as a poem.

In 1869 the newly formed Dominion of Canada acquired the North-West Territories - all the land between Ontario and British Columbia - from the Hudson's Bay Company, which had claimed them under a British Royal Charter dating to 1670. Plans were made to establish the Province of Manitoba on part of the land, which included Lord Selkirk's Red River Settlement of 1811. The Metis-people of mixed ethnicity: French/British/Scot and Native - who populated that wilderness, rightly feared the loss of their personal property to the Canadian government. Their leader, the dynamic renegade Louis Riel, set up a provisional Red River Government (Assiniboia) at Fort Garry (later Winnipeg) to negotiate with the Dominion of Canada on behalf of the Metis. The Canadian government sent out troops - British regulars and Canadian volunteers under the command of Colonel Garnet Wolseley - to quell what it considered a threatening and mutinous rebellion. Riel and the Provisional Government counted on Wolseley arriving before his troops and hoped to negotiate with him.

This did not occur and the resistance became violent. Before Wolseley reached Fort Garry, Riel fled to the United States to avoid imprisonment and execution. The Province of Manitoba was established as planned. It is interesting to note that following the Resistance,

Canadian legislation passed in 1869 was the first to distinguish the difference between "Indian" and "Metis" as one of lifestyle: legally an Indian lived the Indian way of life in an Indian community, while a Metis took script to buy a simple land title.

The folk song, set in the Red River Valley of the North, tells of the love of a Metis girl for one of the soldiers sent out to Fort Garry to suppress the Riel uprising. Marriage between a settler and/or soldier and a Native woman, known as *a la facon du pays* - marriage in the fashion of the country - was not uncommon and had been the norm even a century earlier among employees of the fur-trading companies. When a man's tour of duty was over, the country wife was left behind. As one version of the song's refrain repeats:

So consider awhile ere you leave me,  
Do not hasten to bid me adieu,  
But remember the Red River Valley,  
And the half-breed who loved you so true.

Edith Fowke continued to research the song, in the process encountering hundreds of variations. The refrain above was found in the archives of the Glenbow Foundation in Calgary, dated 1885. This version precedes Kerrigan's lyrics by more than a decade. Fowke's appeals for more information, which she published in various Canadian newspapers, brought replies from elderly Canadians who remembered the song from their childhoods in the 1880s and 1890s. Many placed it in the Pembina Valley of Manitoba, at Fort Garry/Winnipeg, and at other locations along the Red River Valley of the North.

Today, "Red River Valley" is commonly played on the fiddle at Metis gatherings and festivals, and is sung in Mitchif, the Metis language. Among the Metis, it naturally is assumed that the lyrics are about the Red River of the North. When the issue was raised on an academic internet list-serve on Native literature, scholars from the American South and West argued that the song is about the Red River between Texas and Oklahoma, while scholars from the North-East insist it is about the Mohawk Valley. We can therefore conclude that while the song is most likely about the Red River Valley of the North and dates to at least as early as the Riel Resistance of 1869, it remains popular enough that the peoples of other river valleys continue to claim it for their own.

# CCHS elects Board Members

Three candidates were elected at the Clay County Historical Society Annual Meeting on April 19. Elected to three-year terms were Merlyn Valan, Alvin Swanson and Rodney Erickson, all of Moorhead.

## ERICKSON:

Erickson is a retired teacher and librarian. He discovered a love of history in college which led to a history major. Erickson was MSUM Collection Development Librarian for 33 years and has served on several boards and committees. Erickson believes "It is important for communities to keep records of how they got started and how they have developed over the years. I believe we need to be cognizant not only of the past, but also of the present, because in just a short time it too will be history."

## SWANSON:

Swanson has lived in Clay County all his life with the exception of two years in the military service. He and his wife Diane have been members of the historical society for over 20 years. It was through visiting Clay County Museum's exhibits and displays that Swanson

first became interested in history and the preservation of history. Swanson has worked with numerous community organizations and feels this experience will help him to be a productive CCHS Board Member.

## VALAN:

Valan, a State Representative of the Minnesota House District 9B for eight years, has served on many Boards and Committees and is past president of the Clay County Sugar Beet Growers Association.

Valan was first elected to the CCHS Board in 1998.

• • • • •

CCHS Officers elected at the regular Board Meeting on April 25 are: Norman Roos - President, Donna Voxland - Vice President, Joyce Haug - Secretary and Rodney Erickson - Treasurer.

## Endowment Fund Donations

Rev. Ariel R. Molldrem, Moorhead

## CCHS Memberships - New and Renewals

### March/April 2001

CCHS extends a very special thank you to the following individuals who have renewed their membership for another year.

### RENEWALS

Karen D. Evanson, Moorhead  
Timothy R. Nowak, Cheyenne WY  
Kenneth & Janet Fox, Hawley  
Robert & Janet Hillier, Moorhead  
Jeff Kehl, Hawley  
Alice Oliver, Moorhead  
O.T. (Bud) Swanson, Moorhead  
State Bank of Moorhead, Moorhead  
Anna Marie Larson, Ortonville  
Gene & Diane Pickett, Moorhead  
Elsie M. Pitsenbarger, Fargo  
Bob Backman, Fargo  
Gunhus, Grinnell, Klinger,  
Swenson & Guy, LTD, Moorhead  
Hope Peterson, Moorhead  
Donna McMaster, Moorhead  
Dorothy Carey, Moorhead  
Paul DesJardins, Felton  
Phil & June Felde, Moorhead

Mildred Skugrud, Moorhead  
Aubrey & Catherine Thomas, Moorhead  
Stenerson Lumber, Moorhead  
Loren & Agatha Helmeke, Fargo  
LaVerne Halverson, Minneapolis  
Leslie Rogne, Kindred, ND  
Charlotte Onstine, Moorhead  
Scott Onstine, Moorhead  
Merlyn & Shirlee Valan, Moorhead  
Donna & Eric Chalimonczyk, Moorhead  
Donald Pingree, Georgetown  
Mrs. Alice T. Polikowsky, Moorhead  
Dick & Kathy Zaylskie, Fargo  
Sara & Dean Sather, Fargo  
Delmar & Rhoda Hansen, Moorhead  
Sandra McEvers, Moorhead  
Art & Marie Wenner, Moorhead  
Carol & Gordon Ekre, Hawley  
Arnold & Mary Ellingson, Fargo  
Ron & Deanna Ulven, Hawley  
Juliet & Harold Hanson, Fargo  
Florence Anderson, Moorhead  
Helen D. Benson, Moorhead  
Jean Doty, Hawley  
Jeanette R. Ladwig, Barnesville  
Roger & Joan Stenerson, Glyndon  
Lawrence Smith, Moorhead  
Fargo Moorhead Chamber of Commerce  
Gary & Nancy Ronsberg, Hawley  
Earl Ingrebretsen, Felton

Ralph Grommesh, Barnesville  
Keith Larson, Hawley  
Chris Olson, St. Paul  
Joel Belgum, Moorhead  
Rachel Smithwick, Barnesville  
Sherwood E. Peterson Jr., Rochester  
Marilyn Gorman, Moorhead  
Gene & Betty Christensen, Glyndon  
Dr. Yvonne Condell, Moorhead  
Marilyn G. Wussow, Moorhead  
Robert L. Gerke, Moorhead  
Kathrine Erickson, Moorhead  
Clara Evenson, Fargo  
Mrs. Joy R. Johnson, Moorhead  
Catherine & Burton Grover, Bellingham WA  
Evelyn Marie Larson, Fargo  
Ethel R. Medalen, Mankato

CCHS welcomes the following new members:

### NEW MEMBERS

James Gilbery, Yakima WA  
Matthew & Kathy Valan, Moorhead  
Kenneth Christianson, Detroit Lakes  
Sandra L. Gordon, Fargo  
Ben E. Brunsvold, Moorhead  
Karen Myran, Hawley



# A Great new Book

(You'll need two - one to read and one to give away)

## THE 20TH CENTURY IN MOORHEAD

Heritage Publications, in collaboration with the Clay County Historical Society, is proud to announce this unique 184 page book that takes a year by year, decade by decade look at the past century in Moorhead. This book, which is full of historic photographs, provides a glimpse at the last ten decades with major news events of the day as well as several first-hand recollections by people from our community that lived through them.

There is a limited printing. Pick up your copy today at the Clay County Museum and Archives in the Hjemkomst Center, 202 1st Avenue North in Moorhead or send in the form below. Call 218-299-5520 for more information.

Only

**\$20** PER BOOK

Plus \$3 postage, handling  
and Minnesota sales tax.

THIS IS A LIMITED RUN - BE SURE TO ORDER YOUR COPY BEFORE THEY ARE GONE

Send To:

CCHS MOORHEAD BOOK - P.O. BOX 501 - MOORHEAD, MN 56560 - 218-299-5520

**MOORHEAD, MN 1900-2000: "A CENTURY OF CHANGE"**

#1) Name \_\_\_\_\_

Address \_\_\_\_\_

City \_\_\_\_\_ Phone \_\_\_\_\_

State \_\_\_\_\_ Zip \_\_\_\_\_

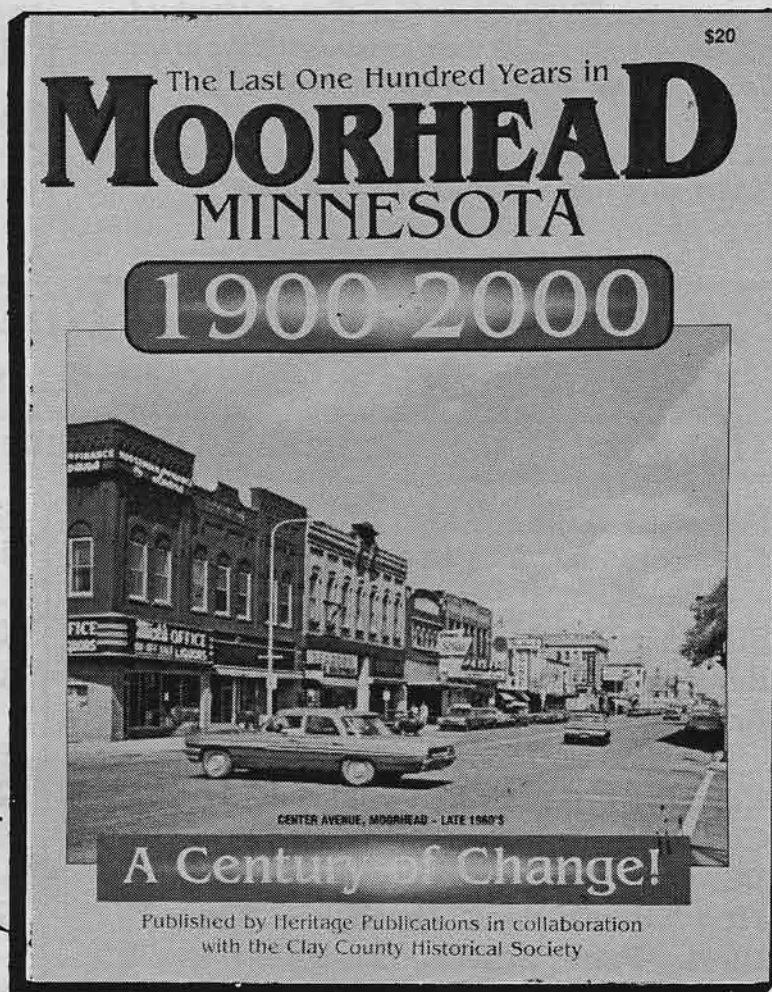
#1) Name \_\_\_\_\_

Address \_\_\_\_\_

City \_\_\_\_\_ Phone \_\_\_\_\_

State \_\_\_\_\_ Zip \_\_\_\_\_

\$23 FOR EACH BOOK MUST ACCOMPANY ORDER



## Swedish traditions to be celebrated at Bergquist Pioneer Cabin

Special displays and activities are being planned at the Bergquist Pioneer Log Cabin during the Scandinavian Hjemkomst Festival.

There will be displays including handmade Christmas ornaments, musical entertainment and demonstrations of knitting, braiding and huck weaving. There will be a number of hands-on activities and Swedish refreshments will be served.

A shuttle bus, sponsored by State Bank of Moorhead, will provide rides from the Hjemkomst Center to the Cabin and back throughout the afternoon.

CCHS Archivist Mark Peihl will once again bring history alive with a guided tour of the cabin.

Don't miss this great opportunity to learn about the Swedish pioneer perspective here in Moorhead. If you have never visited the Bergquist Cabin, make this a priority. Plan to attend the Scandinavian Festival at the Hjemkomst Center and ride the shuttle bus to the Cabin and back.

Hours are from 1 - 4 p.m. daily, Thursday, Friday and Saturday, June 21-23.

Mark it on your calendar and plan to attend.



Bergquist Pioneer Cabin, 1870 - Moorhead MN

## Clay County Historical Society

### Business, Individual and Organization Support (BIOS) Members

Thank you to these special BIOS Members of Clay County Historical Society

#### **PATRON (\$200 - \$499)**

**Grosz Studio, Moorhead**

#### **SUSTAINING MEMBERS (\$100 to \$199)**

**Bev & Lloyd Paulson, Moorhead**

**Brian Dentinger,**

**Edward D. Jones & Co., Moorhead**

**Chamber of Commerce of Fargo Moorhead**

**City of Hawley, Hawley**

**Dilworth/Glyndon/Felton Schools**

**First National Bank, Hawley**

**Hawley Public Schools, Hawley**

**Korsmo Funeral Service, Moorhead**

**Lutheran Brotherhood**

**Lake Agassiz Branch 8430, Moorhead**

**Moorhead Area Public Schools, Moorhead**

**Moorhead Drug Company, Moorhead**

**Moorhead Kiwanis, Moorhead**

**Rigels, Inc., Appliances-TV, Moorhead**

**Scheels All Sports, Moorhead**

**Sellin Brothers, Hawley**

**Vikingland Kiwanis, Moorhead**

#### **SUPPORTING MEMBER (\$50 to \$99)**

**Bentley & Bentley, DDS, Hawley**

**Cass-Clay Creamery, Inc., Fargo**

**City of Barnesville, Barnesville**

**Richard T. McMurray,**

**C.M. Associates, Annandale, VA**

**Eventide, Moorhead**

**Gate City Federal Savings Bank, Fargo**

**Greater Fargo Moorhead**

**Convention & Visitors Bureau, Inc.**

**Gunhus, Grinnell, Klinger, Swenson and**

**Guy, Ltd, Moorhead**

**McLarnan, Hannaher & Skatvold,**

**Attorneys, Moorhead**

**Melberg Christian Book & Gift, Moorhead**

**Mid-Day Central Lions, Moorhead**

**Moorhead Area Retired Education Asso.**

**State Bank of Hawley, Hawley**

**State Bank of Moorhead, Moorhead**

**Stenerson Lumber, Moorhead**

**Veteran's of Foreign Wars, Moorhead**

**Ward Muscatell Auto, Moorhead**

**Wells Fargo Bank MN, N.A., Moorhead**

**Wright Funeral Home, Moorhead**



# CLAY COUNTY MUSEUM

## *"Stitches in Time"*

Clay County's Handmade Textiles

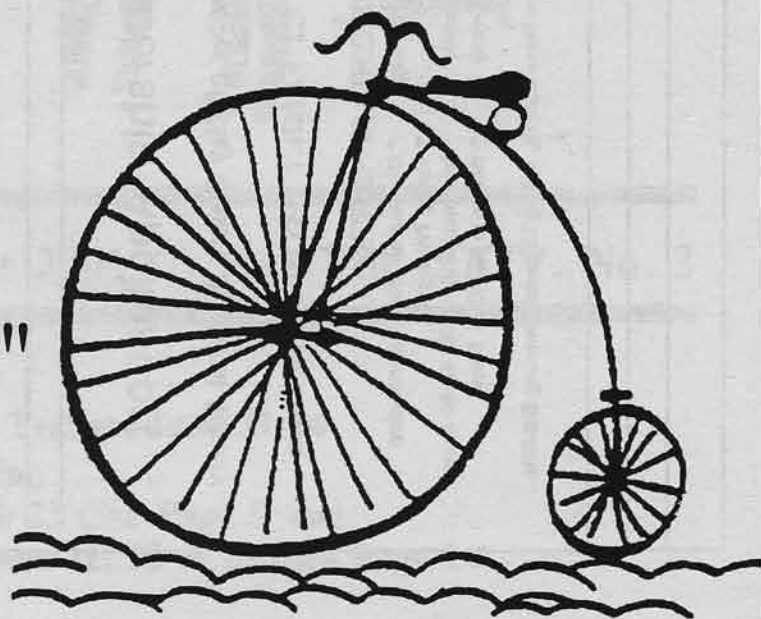
---

## *"Keeping in Touch"*

125 years of Communicating  
(from telegraphy to email)

— CLOSING JUNE 11 —

---



## *"A Century of Cycling"*

(From the high wheels of the 1880s  
to the mountain bikes of today.)

● ● ● ● ● ● ● ● ● ●

## *"When the weather goes bad"*

(featuring a 1957 tornado video)

● ● ● Opens on May 19 ● ● ●

Museum Hours are: 10-5 Mon.-Sat., 10-9 Thurs., 12-5 Sun.  
Hjemkomst Center, 202 1st Ave. N., Moorhead, MN

## CCHS BIOS Memberships

- ☐ \$ 50 to \$99 Supporting Member
- ☐ \$ 100 to \$199 Sustaining Member
- ☐ \$ 200 to \$499 Patron
- ☐ \$ 500 and up Major Exhibit Sponsor

As a CCHS BIOS (Business, Individual, Organization Support) Member you will receive all benefits of an individual and/or family membership plus a certificate ready to frame and display, extra complimentary passes to visit the Viking Ship, the Stave church, traveling exhibits in the building, and a listing in all CCHS bi-monthly Newsletters. To become a CCHS BIOS Member please return this form or a facsimile to CCHS, Box 501, Moorhead, MN 56561-0501 or call 299-5520.

Business: \_\_\_\_\_

Contact Name: \_\_\_\_\_

Address: \_\_\_\_\_

Phone #: \_\_\_\_\_

## CCHS Membership Application

I would like to become a member of Clay County Historical Society.

☐ INDIVIDUAL \$20.00 ☐ FAMILY \$35.00 ☐ Donation

### MEMBERSHIP BENEFITS

- \* Support preservation of our heritage
- \* Bi-monthly newsletter
- \* Discount on Acid-Free Materials
- \* FREE Admission to Clay County Museum & Archives and two complimentary passes to the Stave Church, Viking Ship and Traveling Exhibits.
- \* Discount on Photo Reproduction
- \* Voting Privileges
- \* Invitation to all CCHS Social Events
- \* Access to all CCHS Tours

NAME: \_\_\_\_\_

ADDRESS: \_\_\_\_\_

PHONE: \_\_\_\_\_

NON PROFIT  
ORGANIZATION  
U.S. POSTAGE PAID  
MOORHEAD, MN  
56561  
PERMIT NO. 494

CLAY COUNTY HISTORICAL SOCIETY



HJEMKOMST CENTER, 202 1ST AVENUE NORTH

P.O. BOX 501

MOORHEAD, MINNESOTA 56561-0501

Address Service Requested