

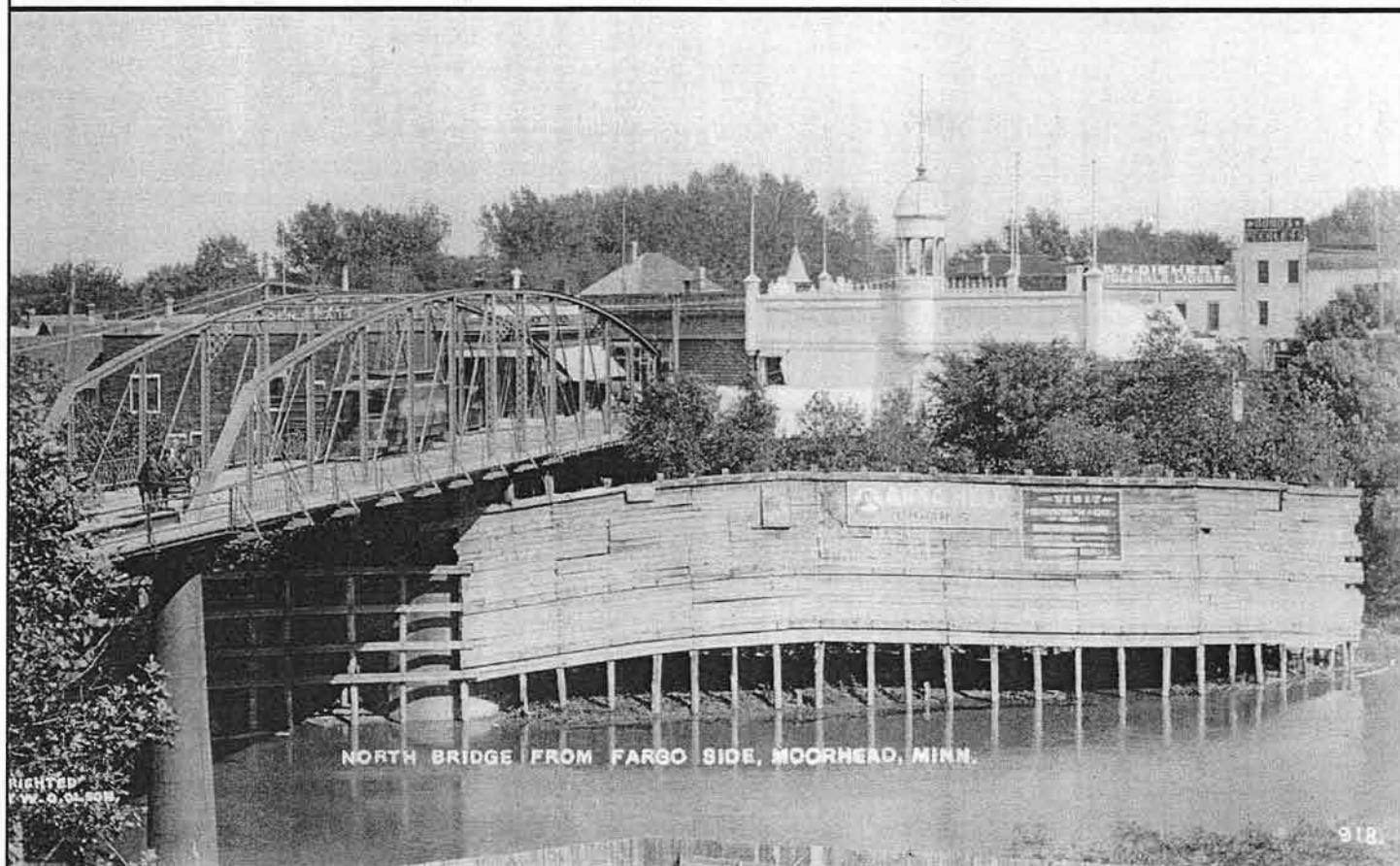
Clay County Historical Society

Volume XXXI No. 2

Clay County Historical Society Newsletter

March/April 2008

Mystery Building?



NORTH BRIDGE FROM FARGO SIDE, MOORHEAD, MINN.

This photo from our last *Newsletter* elicited many questions about the turreted building at right. It's story is told in this issue beginning on page 8.

Celebrating
75

**Clay
 County
 Historical
 Society**
1932-2007

In This Issue:

<u>Pg</u>	<u>Article</u>	<u>Pg</u>	<u>Article</u>
2	President's Message	7	Board of Directors Candidates
3	Annual Meeting Wednesday, May 7	8	Mystery Building
4	Probstfield Picnic, Century Farms and Wanted: Photos/Memorabilia Entertainment	12	Heritage Business Members and 75th Anniversary Sponsors
5	Sesquicentennial Week Activities May 11-18	13	Heritage Members
6	Outreach Displays and Recent Acquisitions	14	New & Renewed Memberships

CLAY COUNTY HISTORICAL SOCIETY



Hjemkomst Center, 202 1st Avenue North
PO Box 501, Moorhead, MN 56561-0501
218-299-5520 www.clayhistory.org

BOARD OF DIRECTORS

Darren Leno, President, Moorhead
Rose Bergan, Vice President, Hawley
Dale White, Treasurer, Moorhead
John Elton, Secretary, Hawley
Carolyn Barden, Moorhead
Jon Evert, County Rep., Moorhead
Gloria Lee, Georgetown
James Odegaard, Hawley
Gene Prim, Barnesville
Pearl Quinnild, Barnesville
Duane Walker, Moorhead
Kelly Wambach, Moorhead

STAFF

Lisa Vedaa, Director
lisa.vedaa@ci.moorhead.mn.us
Pam Burkhardt, Collections Manager
pam.burkhardt@ci.moorhead.mn.us
Mark Peihl, Archivist
mark.peihl@ci.moorhead.mn.us
Janet Nelson, Volunteer Coordinator
Claudia M. Pratt, Exhibit Consultant
Eileen Colton, Experience Works

NEWSLETTER PRODUCTION

Lisa Vedaa, Editor and Contributor
Pam Burkhardt, Contributor
Mark Peihl, Contributor

CLAY COUNTY COMMISSIONERS

Ben Brunsvold, District 1
Jerry Waller, District 2
Jon Evert, District 3
Kevin Campbell, District 4
Mike McCarthy, District 5

President's Message

By Darren Leno, President



Attend the Annual Meeting

Make plans today to attend the Clay County Historical Society's Annual Meeting! Somehow, Lisa was able to get a commitment from Nina Archabal, the Minnesota Historical Society's Executive Director, to be our guest speaker. We're very excited to have Nina come, and hope you'll be there to give her a big Clay County welcome. Nina's appearance part of our 2008 celebration of Minnesota's Statehood Sesquicentennial.

Have you Seen the New Exhibit?

Pam, Mark and Lisa have prepared a wonderful new exhibit in our museum about communication technology in Clay County. I know you'll enjoy it immensely! Please make plans to stop by the museum before the annual meeting, and let me know what you think. And be sure to bring along a friend!

As our 75th Anniversary celebrations and exhibit concluded recently, part of which detailed the history of CCHS from a little backroom collection to a major contributor to local culture, I was reminded how important it is for all of us to continually reassess our situation, and prepare for the future. For as a wise person once said, "those who don't remember the past are doomed to repeat it." And while there are many, many good things in Clay County's past that are worthy of repetition, I'm glad that the society is here to help us remember all of it.

The Clay County Historical Society, in its dedication to its mission, remains a tremendous resource for local historians, governments, planners, teachers, students, researchers genealogists and anyone else who has the curiosity to ask, why are things the way they are? With more than 30,000 historical artifacts in its care, CCHS can bring the answers to that important question to life.

Looking to the Future

You can help to ensure that the mission of CCHS will always be carried forward. Contributions to our endowment fund are always welcome, and are professionally managed in perpetuity. Each year when we receive

our discretionary payment from the fund, I am thankful to those who took the time to make a contribution. It is my hope that this fund will become a more important part of our funding in future years. For more information on how to contribute to the CCHS endowment, please contact FM Area Foundation or call the CCHS office.

CCHS and HHIC

A group of board and staff members from CCHS and the Heritage Hjemkomst Interpretive Center (HHIC) have been meeting to share information about our organizations, with the goal of realizing closer cooperation. We've learned a lot about each other's strengths and challenges, and discovered issues that we have in common. Like any pair of roommates who have lived together for more than twenty years, there have been times that our organizations have disagreed on things. But we were quickly able to agree that we share the goal of creating an exciting destination for where history can be learned and culture celebrated.

It's my hope that CCHS and HHIC will continue to build on the good will that these meetings have engendered, and that we will work closely together to build successful and secure futures in the Hjemkomst Center.

CCHS Annual Meeting, May 7

Guest Speaker, MHS Executive Director Nina Archabal

The Clay County Historical Society is proud to announce Minnesota Historical Society Executive Director, Nina Archabal as the Guest Speaker for the CCHS Annual Meeting on Wednesday, May 7! Ms. Archabal's visit is part of CCHS' homage to Minnesota's 150th Anniversary of Statehood. The Annual Meeting will be held in the Auditorium of the Hjemkomst Center, 202 First Avenue North, Moorhead. Guest registration will begin at 5:30 p.m., dinner will be served at 6:00, a brief business meeting will be held at 7:00, and Ms. Archabal will speak at approximately 7:30 p.m. Cost is \$18 per person for dinner, catered by Concordia College's Palatable Catering.

Ms. Archabal served as Minnesota Historical Society's Deputy Director from 1977 until she was appointed as the Executive Director and State Historic Preservation Officer in 1987. In the 20 plus years of her directorship, Archabal has overseen the planning for and construction of the Minnesota History Center, which has significantly expanded the scope and public visibility of the Society's programs, collections, and services; extended the Society's reach to many more Minnesotans as evidenced by the increase in its membership from 7,000 to 19,000; drawn the state's Native American citizens more closely into the preservation and interpretation of their contribution to Minnesota's past through the Society's Indian Advisory Council and the construction of the Mille Lacs Indian Museum; and expanded the Society's presence in Minneapolis with the construction of the award-winning Mill City Museum within a burnt out industrial shell where people can now learn the important stories of agriculture on the plains, the development of shipping by rail and water, the growth of the milling industry that made Minneapolis the Flour Capital of the World, and the history of the state's largest city.

Archabal currently serves on a number of governing boards including the Smithsonian Council; the Hill Museum and Monastic Library at St. John's University; the St. Paul Riverfront Corporation; the Alliss Educational Foundation; and currently serves as vice-



Nina Archabal

Attend the Annual Membership Meeting!

Wednesday, May 7
5:00-8:00pm

5:00 Registration

6:00 Dinner

7:00 Business Meeting

7:45 Guest Speaker, Nina Archabal, Executive Director, Minnesota Historical Society

Dinner Tickets: \$18 per person

Available Monday-Friday at CCHS Office

chair of the United States Committee of the International Council of Museums. She chairs the visiting committee for the Peabody Museum at Harvard University and the St. Anthony Falls Heritage Board, and serves on the visiting committees for Longwood Gardens and the Arnold Arboretum. Archabal served as an overseer of Harvard College, chair of the board of the American Association of Museums and has been a trustee of the American Folklife Center in the Library of Congress. She also served on the National Council on the Humanities.

In 1997, President Clinton awarded Archabal the National Humanities Medal. In 2001, she received the Outstanding Alumni Achievement Award from the University of Minnesota, and an Honorary Doctorate of Humane Letters from Carleton College in 2002. In April 2006, she received the Colman Barry Award for distinguished contributions to religion and Society from St. John's University. In 2007, she received the President's Award from the National Trust for Historic Preservation for her leadership in the historic preservation movement.

Archabal holds a bachelor's degree cum laude and a master of arts in teaching from Harvard University. She holds a Ph.D. from the University of Minnesota.

Probstfield Farm Picnic May 15

The Probstfield Farm Living History Foundation will hold their annual picnic 5:30-7:00pm on Thursday, May 15, at the Probstfield Farm site. The farm is located north of M.B. Johnson Park on 11th Street North (also known as County Road 3, Oakport Street North, or the old US Highway 75) in Moorhead, MN. The picnic is free and will include hay rides, a bonfire with s'mores, and grilling. The Foundation's annual meeting begins at 3:30.

The Probstfield Farm Living History Foundation, Inc. was founded in 1995 by June Probstfield Dobervich and her grand-nephew Matthew Scheibe as a way to preserve the historic farm of their ancestor (June's grandfather), Randolph M. Probstfield. Randolph Probstfield was born in 1832 in Prussia and emigrated to the United States around 1850. He and his family came to Minnesota in 1859, when they moved to Georgetown, MN, north of present-day Moorhead, MN. They moved to the current location of the farm in 1868/69 and the family farmed there until the 1960s.

PFLHF also owns and operates the Probstfield Organic Community Gardens. Plots are available for rent seasonally starting in early spring. Visit the foundation's website at www.probstfieldfarm.com for more information.

Could your farm be a Century Farm?

Has your farm been in your family for one hundred years or more? The Minnesota Farm Bureau and the Minnesota State Fair work in conjunction on the Century Farm program to honor Minnesota families that have owned their farms for at least 100 years, are at least 50 acres in size and are currently involved in agricultural production. Since the program began in 1976, around 8,000 farms in Minnesota have been recognized as Century Farms, with roughly 250 farms being designated each year. Eighty-one farms in Clay County have been honored with the designation since 1979. Century Farm families receive a commemorative sign, as well as a certificate signed by the president of the State Fair, president of the Minnesota Farm Bureau and the Governor of Minnesota. The deadline for 2008 applications is June 1. Get forms at the CCHS Office, the Clay County Extension office, or online at www.mnstatefair.org.

Do you have photos and keepsakes of area entertainment?

In September, CCHS, with the cooperation of the Clay County Connection and the publishers of the *Barnesville Record-Review* and *Hawley Herald*, will put out another newspaper-style edition similar to the one done for our 75th



Anniversary last year. The 2008 "tabloid" will commemorate the 50th Anniversary of the crash of the plane that was carrying Buddy Holly, the Big Bopper and Ritchie Valens to Moorhead for the next stop on their Winter Dance Party Tour, and will also feature other local entertainers and entertainment. The plane carrying the three performers left from Clear Lake, Iowa after the tour's performance there on February 1, 1959 and crashed eight miles away in a snowy cornfield. The tragedy has been dubbed "The day the music died."

CCHS' would like to add to its small collection of photos and memorabilia of area entertainers in order to do the area entertainment scene justice. We are looking for anything that documents local entertainment, or people from the area who went on to national renown for their entertaining talent. Many names of bands, musicians and personalities have been



tossed around in recent meetings, such as: Bobby Vee, Bernie and Woodchoppers, Buckskin Harry, the Onans, the Fairmont Old Timers, Ken Kennedy, etc. Entertainment is not limited to people, however, and we are also looking for photos and things related to venues where entertainment happened and places like roller rinks, etc., particularly Johnson's Roller Rink in Dilworth. We would love to have a poster or tickets for the Moorhead leg of the Winter Dance Party Tour. If you have any of these things, but are not quite ready to part with them, we would settle for being allowed to scan an image of the object to be able to use for exhibits and programs. Please help us out by digging out and sharing your photos and keepsakes that relate to local entertainment from the advent of radio into the 1970s and 80s!



Clay County Museum Hours: 10-5 Monday-Saturday, 10-9 Tuesday, 12-5 Sunday

Archives Hours: 10-5 Monday-Friday, 10-9 Tuesday

Hjemkomst Center, 202 1st Avenue North, Moorhead, MN ♦ FREE ADMISSION

Minnesota Celebrates Sesquicentennial Week

May 11-18 in Saint Paul

On May 11, Minnesota will reach its 150th anniversary as the 32nd state! Statehood week culminates May 17-18 in a weekend festival on the State Capitol grounds. For a Sesquicentennial calendar of the year-long commemoration, go to the State Sesquicentennial website: www.mn150years.org.

Events leading into the Sesquicentennial Statehood Week include:

May 3: Ann Reed's "Song For Minnesota" debuts. Visit www.mpr.org for more information.

May 4 -11: The Sesquicentennial Wagon Train drives from Cannon Falls to St. Paul, arriving on Statehood Day, May 11. Check the Wagon Train website: www.ac-hs.org/.

May 6: Declaration of Independence arrives at the MN History Center for Statehood Week events. The Declaration exhibit, including many of Minnesota's founding documents, is free and open to the public through May 18th.

May 8-11: Old Minnesota Song of the North Star musical tribute show at the Pantages Theatre in Minneapolis. Evening performances May 10 and 11.

May 10: Minnesota Twins & Boston Red Sox game at the Metrodome honors Minnesota's Sesquicentennial. Pre-game festivities on the Twins Plaza and 1860s-style baseball game on the field before the 6:10 p.m. Twins-Red Sox showdown. Go to <http://minnesota.twins.mlb.com> for tickets.

Statehood Week Events:

Statehood Day, Sunday, May 11th

1-4pm – Open House at the State Capitol and History Center

1-4pm – Tent up on Capitol grounds near Aurora (Merchandise sales and rain shelter)

3 pm – Group picture of former state officials and their descendants on the Capitol steps

3:30pm – Wagon Train arrives from Summit Avenue

3:45pm – Ceremony begins with presentation of colors by First Minnesota Regiment, playing of national anthem and *Minnesota Hail to Thee*.

4 pm – Dignitaries make brief remarks and introduce Statehood Essay contest winners.

4:15 pm – Statehood Essay contest winners read their essays ("What Statehood Means Today and Into the Future")

4:30 pm – Church bells ring.

Sesquicentennial Convoy leaves Capitol to begin Capitals for a Day tour from May 12-16

Saturday, May 17 highlights

11:00am – Food vendors on Martin Luther King Drive, Sesquicentennial and exhibitor tents, entertainment on the Minnesota Stage in front of the Capitol, Emergency Food Shelf Network collects non-perishable food donations all day

12:30pm – 26 vintage aircraft flyover



1:00pm – First Day Issue ceremony for Minnesota's Sesquicentennial Commemorative U.S. Postage Stamp in front of the Capitol featuring both Minnesotan dignitaries and representatives of the United States Postal Service. States are only allowed one commemorative stamp every 50 years, so Minnesota won't have another till 2058.

1:30pm – USPS will have the Commemorative Minnesota Stamp for sale. Dignitaries and the artist behind the stamp's photographic image, Richard Hamilton Smith of Park Rapids, will be on hand to sign autographs on poster-size reproductions of the stamp.

Sunday, May 18 highlights

4:00pm – Food vendors on Martin Luther King Dr, Sesquicentennial and Exhibitor tents, entertainment on the Minnesota Stage, Emergency Food Shelf Network collects non-perishable food donations all afternoon

6:45pm – Music begins on the Capitol steps

6:58pm – (18:58 Military Time) National Guard Flyover

7:00pm – **Statehood Ceremony "Honoring Those Who Serve"** We'll recognize public servants, citizen volunteers, and members of our armed forces on the steps of the Capitol. Includes an all-state choir led by Philip Brunelle, and speakers that include Governor Tim Pawlenty and other dignitaries.

There will also be a satellite link to our troops stationed in Iraq.

8:30pm – Music

8:45pm – Fireworks over the Capitol

State Capitals for a Day

May 12-16

Five honorary capitals chosen by the people of Minnesota

May 12—Bemidji

Contact: Kay Murphy, 218-759-3570

kmurphy@ci.bemidji.mn.us

May 13—Thief River Falls

Contact: Jodie Torkelson, 218-681-2943

jtorkelson@citytrf.net

May 14—Detroit Lakes

Contact: Amy Stearns, 218-844-4221, amy@dlccc.org

May 15—New Ulm

Contact: Mayor Joel Albrecht, 507-359-8233

joel.albrecht@ci.new-ulm.mn.us

May 16—Winona

Contact: Myrna Olson, 507-457-8232

MOlson@cityhall.luminet.net

Outreach Displays

	<u>Open</u>	<u>Close</u>
Barnesville Public Library	April	July
Hawley Public Library	April	July
Moorhead Public Library	April	July
Fargo CVB	April	October

Celebrate the MINNESOTA STATE SESQUICENTENNIAL at the Hawley Public Library. Our state celebrated its centennial 1958. See some souvenirs of the celebrations plus a few fun facts about Minnesota. The official date for statehood was May 11, 1858.



The Moorhead Public Library displays what was HIDDEN FROM VIEW. Come and see items from a variety of time capsules: Clay County Courthouse vault, Hawley 1919 High School cornerstone, Bethesda Church (Moorhead) cornerstone, and the Glyndon Bicentennial. The items have an interesting story. How and when were they discovered? See also a few items from two "behind-the wall" collections from the Keeping/Dock house in Hawley and the former Stahl house in Barnesville. What was hidden there? Dates in the display range from the late 1880s to the 1970s.

Barnesville Public Library has COAT HANGERS: THE GOOD, THE BAD & THE REASONS. Patrons get the inside story on coat hangers in this display. Learn about the history of the wire hanger. Find out what is a "good" hanger and why there are "bad" ones.



Convention and Visitors' Bureau display case by I-94 in Fargo is closed until May. The theme for the summer 2008 display honors the Minnesota State Sesquicentennial. Minnesota became a state on May 11, 1858.

The Hjemkomst Center is featured in a temporary display at the FargoDome in a small case shared between CCHS and HHIC.

IN-HOUSE DISPLAYS

The east hall case will feature a display honoring Denmark as part of the Scandinavian Hjemkomst Festival June 27 – 29 at the Hjemkomst Center. Denmark is the featured country this year. The display is scheduled to open sometime in May.

*Dates and topics are subject to change

Artifacts & Donors

January and February 2008

Donors: Moorhead: Clay County Extension Office, Helen Danielson, Alvin Swanson, Gary Euren, Dale White, Bev & Jerry Edenberg; Barnesville: Terry Olson; Hawley: Margaret Ristvedt, Chuck McDonald; Fergus Falls, MN: Gloria Shepherd; Ely, MN: Jean Marsolek; Fargo, ND: Bob Harris, Mark Peihl, Paul Rustad, Dr. Ronald Olin; West Fargo, ND: David & Marilyn Bruckner; Wahpeton, ND: Paul West

Artifacts: various Atlases and/or platbooks for Clay County 1957, 1961, 1964, 1989, 1993, 1997, 2007, Wilkin County 1949, 1960, 1964, 1997, US maps 1921, 1957 advertising blotter +loose materials; (2) b/w snapshots of interior and exterior of Manitoba Junction depot and a political card for Erwin P. Johnson for Representative 49th Dist.; photo print of Hawley Hawks w/IDs (undated); photo postcard of the Moorhead Tourist Camp Office; scrapbook (1959-1967) relating to Golden Eagles 4-H club; (12) certificates for Troop #40 Boy Scouts of America of St. Joseph's Church dating from 1938-1980; (2) handouts from the Minnesota Democratic caucus in Moorhead 5 February 2008 for Hillary Clinton & Barack Obama; photo print of Dilworth taken from top of NPRY coal dock marked "Dilworth 1907-1908," (2) pamphlets of KQWB music hits lists February & March 1975; program, Minnesota North Stars vs. Winnipeg Jets, Moorhead Sports Center, Sunday, 3 October 1982 [inside: "Training Camp"]; Clay Co. township map, cpr 1907 advertising *The George E. Perley Farm Loan and Land Agency, Moorhead, Minnesota*; (1) vol. Treasurer's Records (1985-1999) Oakmound UCC; (3) vols *Praceptor*, MSTC 1927, 1927 & 1929 and (1) vol *Cho-Kio* 1925, a commencement program Moorhead State 1938, (2) programs for McDowell Club, MSTC 1941 & 1942, Florence Euren's High School diploma 1925, Roy Edwin Euren's baptism certificate, Clara Myrtel Euren's 1916 confirmation certificate, Frank Euren's WWII discharge record, 2-yr diploma, MSTC 1937, Palmer Method Penmanship certificate and certificates of completion for classes; 1918 Souvenir Rally booklet *Freedom For All Forever* and an Acme Special Receiver one-tube radio** made about 1924-1925; flyer, Moorhead Ice Show 14-16 March 2008 at the Moorhead Sports Center, advertising card, *Reeling' on the Red*, guided cat fishing on the Red River of the North; booklet, *Twin City Lines*, Winter 2008 from the Minnesota Streetcar Museum, folder about the new Dilworth Walmart store #1627; postcard w/special *Keeping in Touch* [exhibit] cancellation; train order hoop used at Manitoba Jct, NP Railway Co., (2) train order sheets (one blank, one used), telegram dated 2 Aug 1955; (5) tickets re: Western Minnesota Steam Threshers' Reunion raffle tickets (1992, 1994, 1996, 1997) and season ticket for 1994; (3) WMSTR pinback buttons for 1968, 1972 and undated; potato shipping tag for Who-o Who-o brand, Red River Ohios, Moorhead, Minnesota; folder from Central Junior High School *Cougars* Moorhead, Minnesota; banner for Oakmound 4-H's 50th Anniversary in 1982; workbook *Palmer Method Cursive Writing* (1967) lessons for Grade 5 from Sharp School, Moorhead; floor model potato scale used in Rustad area [transfer from Bonanzaville]; (2) books, *Mother Goose* (no date, ca 1900) and *Appleton's School Readers, 1st Reader*, (no date, but 1892 hand written inside).

** currently on display in the *Keep in Touch* exhibit.

Candidates for CCHS Board of Directors

By Lisa Vedaa, Director

With every Annual Meeting comes the end to another term for one or more of the members on our Board of Directors. This year, we thank for their service and bid goodbye to John Elton of Hawley and Carolyn Barden of Moorhead. To our slate of candidates for election at the Annual Meeting on May 7, we welcome Helen Olson, Hawley; Carol Lockhardt, Ulen; Gene Prim, Barnesville; and Jim Odegaard, Hawley. Gene is up for election to a second three-year term and Jim is up for election to a first three-year term, having been appointed to fill a vacant board seat in 2006. Helen and Carol will be new to the Board, as candidates for first three-year terms to take the open seats left by John and Carolyn. Following are short biographies of each candidate.

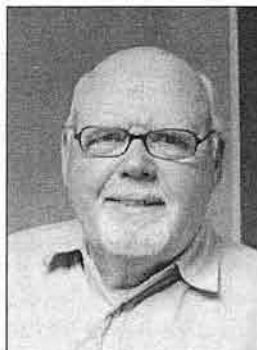
Gene Prim, Barnesville

Gene Prim has been in the newspaper business since high school in Barnesville. He currently owns the *Barnesville Record-Review*, *Hawley Herald*, and *Lake Park Journal* newspapers, runs the Clay County Connection which concentrates on special regional news, and is a shareholder in Vikingland Publishers which produces a weekly advertising supplement. He was the mayor of Barnesville for a total of ten years, 1985-1992 and 1999-2004, and has worked with the Barnesville Jaycees, Barnesville Chamber of Commerce, and the Barnesville Main Street Program. Prim has always had a great deal of interest in local heritage and its preservation, and is enthralled with historic artifacts, stories, buildings, and particularly photographs, though he is not one to dabble in genealogy. He enjoys writing a historical column for the Barnesville paper in which he combines his own research about important community events with historical photos and stories recorded in the *Record-Review*.



Jim Odegaard, Hawley

Jim Odegaard is a lifelong resident of Clay County, graduating from Hawley High School and Minnesota Technical College, Moorhead Campus. He retired from the North Dakota Air National Guard in 2005 with over 25 years of military service. Jim and his wife Melanie live in Hawley. He currently enjoys driving motor coach for tours by Anderson Coaches in Frazee and owns the Olde Richwood



Shoppe on Highway 10 in Hawley with his sister Cathy Riedberger. He has served in many civic groups and city government positions, including in the Hawley City Council for two terms, as Hawley Vice-Mayor, in the Hawley Area Fire Department for 23 years, and as President of the Hawley Community Club. Jim and Melanie have a grown son and daughter and two grandsons. Jim has always been interested in history and artifacts.

Helen Olson, Hawley

Helen Olson was born and raised in the Rollag, Minnesota area, and graduated from Hawley High School. She worked for four years at the 1st National Bank in Moorhead and spent three years as an officer's wife in the U.S. Army, before becoming a stay at home wife and mother and farming for 40 years near Hawley with her husband Bob. They have four children and nine grandchildren. Helen is active in her church and community and enjoys playing the organ and piano. She is interested in local and family history, as all four sets of her great grandparents homesteaded in the Rollag area. The Western Minnesota Steam Threshers Reunion grounds are located on her grandparents' land.



Carol Lockhart, Ulen

Carol Lockhart is one of five children raised by Stanley and Eldora Lunde on their dairy and grain farm near Ulen. Carol graduated from Ulen High School in 1966 and from Fergus Falls Junior College in 1968. Carol and her husband Mike operate a small grain farm east of Ulen and have two grown children, son Jeffrey and daughter Jean. Carol has worked as a receptionist/secretary at a local funeral home, typesetter for the Ulen Union, and church secretary at Bethlehem Lutheran Church for 15 years. She really enjoyed setting type for Ulen's Centennial book *Spanning the Century* and serving on the committee for the city event in 1986. She has taught Sunday School, confirmation, served as youth advisor and currently serves on the church's Synod Council. She served as Bethlehem's church organist and volunteers as a choir accompanist at Ulen-Hitterdal School and Viking Manor. One of her interests has been serving on the Preservation Committee of Atlanta Lutheran Church, a closed rural congregation. When time allows, she hopes to do more work on cemetery history books.



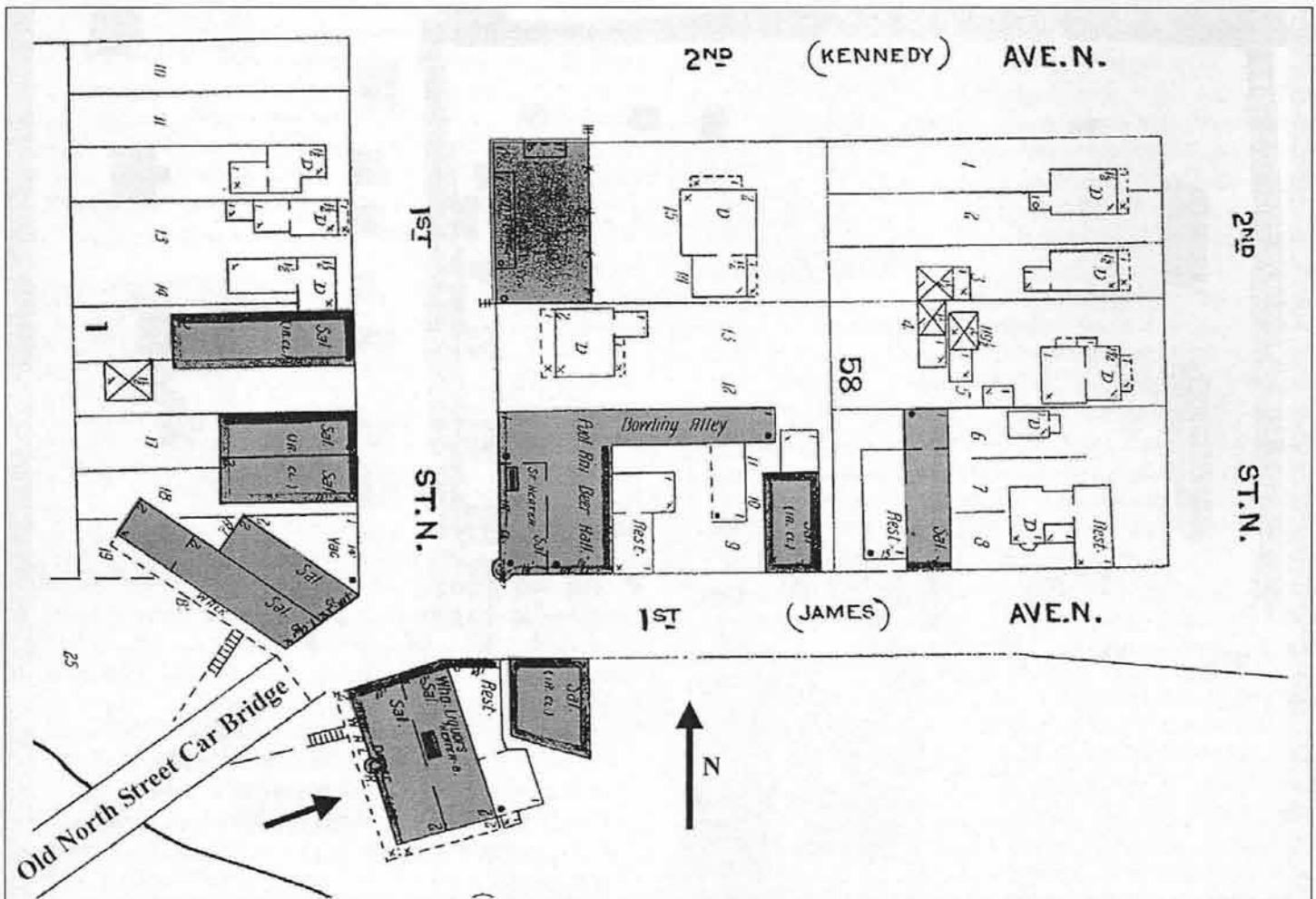
MYSTERY BUILDING

By Mark Peihl, Archivist

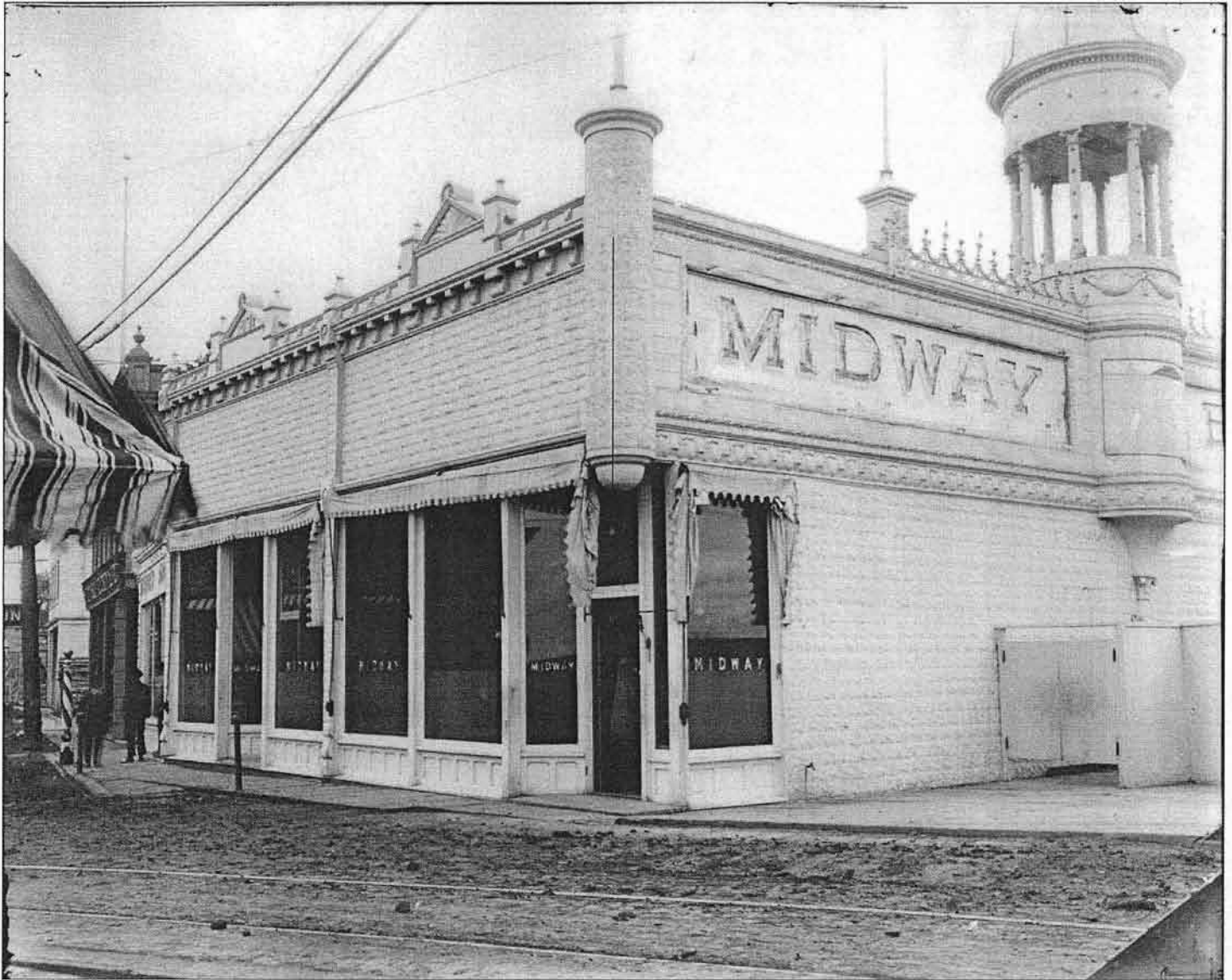
The cover of our last *Newsletter* featured a story about the troubled origins of the Fargo and Moorhead Electric Street Railway Company. A 1910 vintage photo of the Old North Street Car Bridge graced the issue's front cover. We received several phone calls (including one from KFGO Radio) from folks curious about the building in the background. Here's an explanation.

The building was the Midway Saloon and Restaurant, one of many such establishments crowded around the

Moorhead approach to the bridge. As many of you readers may know, North Dakota entered the union in 1889 with a prohibition provision in their constitution. On June 30, 1890 all of the saloons in North Dakota closed. But they could stay open in Minnesota. Fargo saloon owners and others poured into Moorhead to set up shop. In 1900, the number of Moorhead saloons peaked at 45. There were about 3,700 people in town at that time, about one saloon for every 82 residents. That would be like Dilworth today with 37 bars. The business brought money into the city, but tremendous problems as well.



This map shows the neighborhood around the North Bridge in September 1906. The lower arrow points to the Midway. Alcohol serving businesses are highlighted in grey. Nearly a dozen sat within 100 yards of the bridge. Those marked "Sal" are saloons. "Rest" indicates a restaurant and "D" means dwelling. Adapted from Sanborn Fire Insurance Map, Moorhead, Minnesota, September 1906.



The Midway about 1912. Haas' glass sign is gone as are the brass rails protecting the plate glass windows out front. Note the streetcar tracks in the street in the foreground.

Obviously it wasn't Moorheadites supporting these businesses. Their customers were coming from dry North Dakota, especially in the fall when thousands of harvest hands flooded the Red River Valley. The best locations for saloons tended to be around the Moorhead ends of the two bridges, the South (Main Avenue) and North Bridges. (Think "first chance, last chance.") The Midway was the first on your right as you crossed the North Bridge.

Two days before North Dakota went "dry," the Moorhead City Council met to act on 23 applications for saloon licenses. Only one was for a saloon near the north bridge. Andrew Thompson had built a new building on the north side of Ridge Avenue where the bridge abutted

in Moorhead. (Thompson's would become the first saloon on the left.) Thirty First Ward residents turned in a petition arguing against allowing this bar in their neighborhood. (The First Ward included Moorhead north of the NP Railway tracks and west of 5th Street.) The Council granted all 23 licenses, including Thompson's. The First Ward residents had reason to be concerned. By 1900, their neighborhood was home to over half of Moorhead's 45 saloons.

The Midway was the second saloon near the bridge. In late summer 1891, John "The Dutch Prince" Haas built a saloon and restaurant just across Ridge Avenue from Thompson's. Haas had been a successful Fargo

Continued next page...

Mystery Building, cont. from page 9

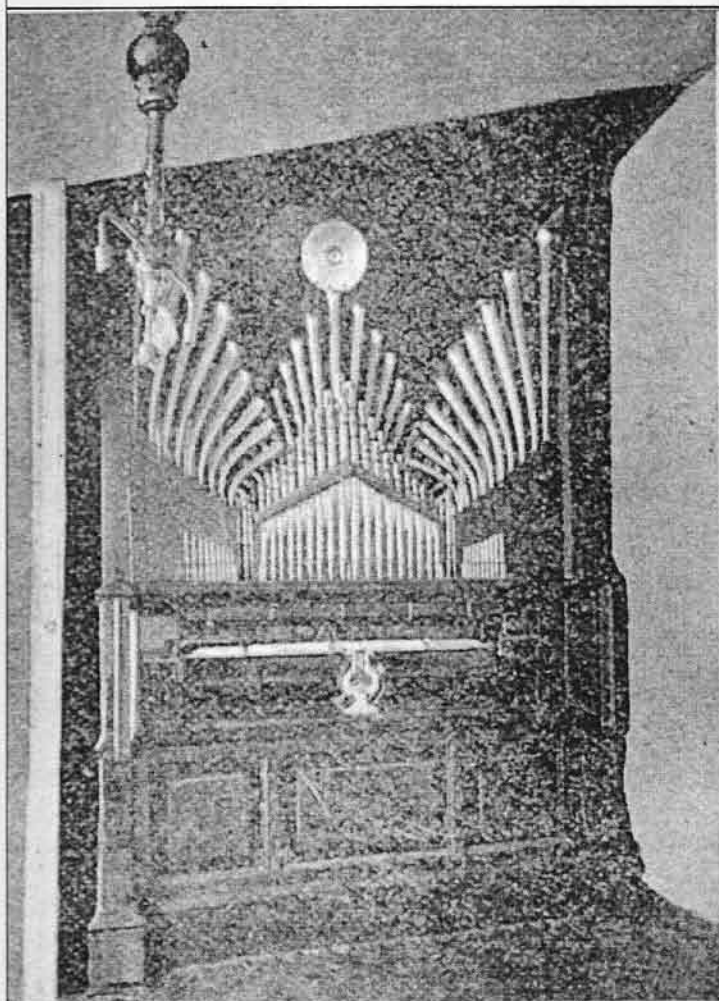
businessman, owning a saloon, restaurant and hotel. His Moorhead establishment was 64 by 70 feet, two-stories, including a full basement. He did a good business and in 1897 refurbished the place into what was, perhaps, the gaudiest of Moorhead's saloons.

The city may have had something of a reputation for fancy bars. In Sinclair Lewis' 1925 novel, *Babbitt*, the title character, recently graduated from medical school in 1908, approaches his father-in-law for a loan to furnish an office for his practice. The old man says, "...you can look at a fellow's sore throat or prescribe for an ear-ache just as well in a nice simple little office as in some fool place all fixed up like a Moorhead saloon."

The September 18, 1897 *Moorhead Daily News* described the joint's renovations:

[See below, right]

Haas spent over \$5000 on this 8 by 12 foot mechanical band. That's more like \$125,000 today.



Midway owner John Haas published an illustrated "Souvenir" of his saloon and restaurant in 1899. Here he is on the cover.

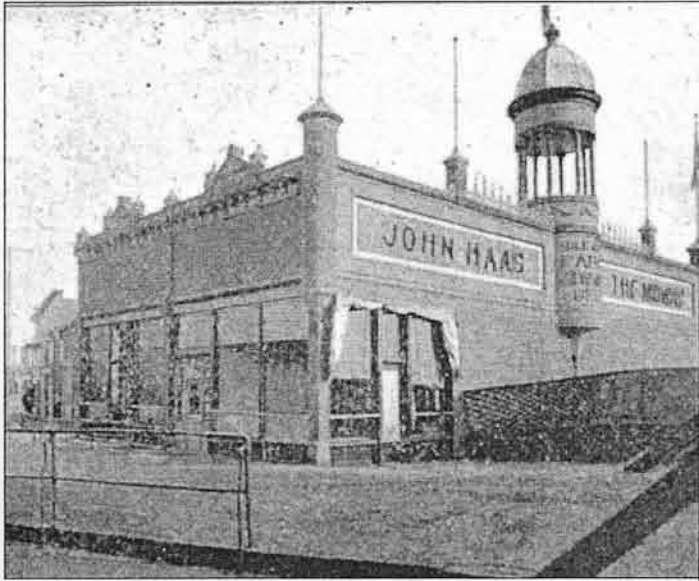
"The west front [facing the river] is in imitation of cut stone. A tower, 80 feet high from the ground, of Moorish and Corinthian design, rises out of the central portion. From the top of this tower a tall flagstaff ascends heavenward, having a golden eagle at its apex, and flying the American flag always. There are four other flag staffs along the western roof which will float streamers. The dome is supported by eight columns, having carved capitals. Beneath the dome is a place for a brass band. Along the façade is the sign 'JOHN HAAS, THE MIDWAY CAFÉ' in lead art glass, in two plates 4½ feet wide by 26 feet long on either side of the dome. The sign will be illuminated at night by electric lights behind, which will give a bright and flashing effect. At the top of the dome will be an electric sign which will spell the owner's name in alternating colors of red and gold. The north elevation is in imitation of brick, has iron cornice and is artistically painted. The first story of the building on north and west fronts is of fine plate glass from floor to ceiling. Guard rails of polished brass to protect these."

Henry Johnson, a Normal School teacher and Moorhead City Council member in the late 1890s, later wrote in his autobiography, *The Other Side of Main Street*, of the Midway:

Continued on page 12...

Mystery Building, cont. from page 10

Photos from Haas' 1899 "Souvenir"



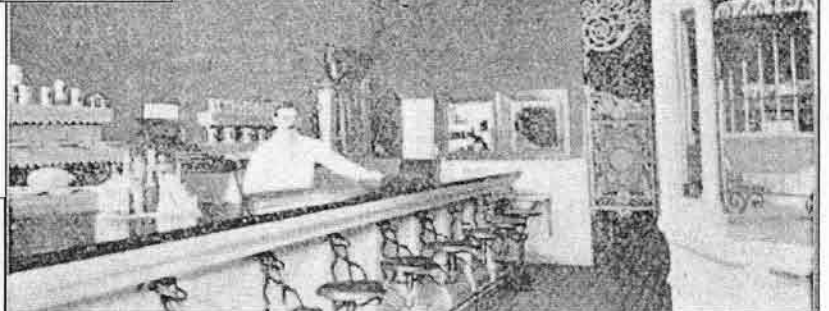
The Midway in 1899. Note the brass railings protecting the plate glass window around the front. The big sign on the west wall at right was glass and lit from behind at night. The writing on the tower in the middle advertises Pabst Beers. Haas was the sole distributor of Pabst products in Moorhead.



The lobby itself was pretty impressive, featuring a free-standing cigar case.



It's a shame the barroom photo is so unclear. Note, however, the arched, frescoed dome in the ceiling and the length of the mahogany bar – 36 feet!



The Midway's restaurant was nearly as famous as its bar. Chef Nick Markov served up sumptuous meals.

Heritage Business Members and 75th Anniversary Sponsors

Please help us thank these business members for supporting the Clay County Historical Society by patronizing them with your business:

PATRIARCH (\$500+)

State Bank of Moorhead (Sponsor)

SETTLER (\$200-\$499)

Cahill Law Office, P. A.
Eventide
First National Bank of Hawley
City of Georgetown
Mac's, Inc.

TRAILBLAZER (\$100-\$199)

City of Barnesville
Dilworth/Glyndon/Felton ISD
Don's Car Washes, Inc.
City of Hawley
Korsmo Funeral Service
Moorhead Antique Mall
Moorhead Area Public Schools
Moorhead Drug Company
Moorhead Kiwanis
Moorhead Midday-Central Lions
Rigels, Inc.
Scheels Moorhead

Sellin Brothers, Inc.
State Bank of Hawley
Talent Productions
Wright Funeral Home
YHR Partners, Ltd.

EXPLORER (\$50-\$99)

Geoffrey D. Bentley, DDS, PA
McLaughlin Auctioneers, Dilworth
Mickelson Body Shop, Hawley
Moorhead Area Retired Educators
Moorhead Vikingland Kiwanis
Richtman's Press Club
Stenerson Lumber

75th Anniversary Sponsors

AmericInn Lodge & Suites of Moorhead
Bernie's Wines & Liquors
CMP Consulting
Clay County Connection
Dewey's Septic Service, Lake Park
District No. 3 School Alumni
FM Printing & Office Supplies
First National Bank, Hawley
Georgetown Community Affairs Committee
Gio's at the AmericInn
Gloria Lee

Hornbacher's Foods
Johnson & Johnson Insurance
Jon and Phyllis Evert
Juan and Annele Mondragon, owners of Juano's Restaurants, Juano's Latin Bar and John Alexander's American Classics Restaurant and Bar
KFGO 790-AM
Kay Mahar
Kelly Wambach
Kim Brewster, Ice Art, Inc.
Lakes & Prairies Community Action Partnership
Lichtsinn, Anderson Insurance
Lindsay Ecowater Soft Water
Lynn Brakke Organic Beef
Mikkelson Insurance
Moorhead Antique Mall
Red River Trails & Tours
Roisum Elite Sales & Marketing
Sign Post, Hawley
Snap Dragon Restaurant
Speakeasy Restaurant
Strand & Marcy Insurance Agency
Summit Financial Services
Talent Productions
Village Inn Restaurant

Mystery Building, cont. from page 10

"At one of the bridges was 'Johnnie Haas' place,' said to be the most palatial saloon on the continent between New York and San Francisco. I never saw the interior but the report that within its precincts four-hundred electric lights were nightly gleaming suggested that there was something to see."

Indeed there was. The *Moorhead Daily News* continued:

"In entering the room next to the bridge the visitor passes through a handsome vestibule, then by a heavy mahogany door, having a carved glass panel, into the lobby... It is finished in solid mahogany, with octagon

columns... extending from floor to ceiling, filled in between with brass grill work...

"Passing through the lobby the visitor enters the barroom, which is 22 by 45 feet. It is almost dazzling in magnificence. Extending its entire length is an arched dome, frescoed on steel, and dotted all along the beams supporting the dome are numerous incandescent lamps. All around the room are mirrors. Those behind the bar... are 11 feet deep and extend 32 feet in length... The bar is 36 feet long, exquisitely carved in front, smooth as glass on top. The top is one piece of mahogany and is the largest single piece of mahogany, it is claimed, ever put into a bar in the United States. Behind the bar is a

Continued on page 14...

Heritage Members

The number of members in the following categories continues to grow! Thank you to all of our members for your tremendous support.

Individual Patriarch (\$500+)

Darren & Jane Leno, Moorhead
Lynne M. Olson, Fargo
Elsie Pitsenbarger, Fargo

Individual Settler (\$200-\$499)

David R. Alme, Kennewick, WA
Roland & Carolyn Barden, Moorhead
Jeff Longtine, Moorhead
Richard T. McMurray, Annandale, VA
James & Chris Stenerson, Moorhead

Individual Trailblazer (\$100-199)

Robert L. & Selma Anderson
Rod C. & Audrey Angstman
Carl L. & June Bailey
Jim Bergquist & Jane Eastes
Al & Meredith Bloomquist
Kevin & Kristy Campbell
Dr. Yvonne C. Condell
Jim L. & Portia Danielson
Paul & Joyce Eidbo
John & Audrey Elton
Rodney Erickson
Graham & Madrene Goeson
Burton Grover
Rhoda Hansen
Dennis & Kris Herbranson
Lorine D. Holschuh
Andre & Emily Hougum
Hal F. Janneck
Ardee & Eunice Johnson
Richard & Sharon Krabbenhoft
James H. Landblom
Patricia Lynde-Hemmah
Dan & Faith Meurrens
Robert & JoAnn Nyquist
E. Robert & Donna Olson
Esther O. Olson
Charlotte Onstine
Elaine G. Oss

Lloyd & Bev Paulson
John D. Peterson
Sherwood, Jr. & Wendy Peterson
Donna M. Richards
Karol Kay Peterson Rood
Bev & John Rowell
Steve & Lucia Schroeder
Hazel & Davis A. Scott
William Snyder
Ruth & Olin Storvick
Bob & Linda Swanson
Phyllis W. Thysell
Chris & Ellen Velline
Mark & Donna Voxland
Tom & Sherry Watt
Ron & Loretta Welch
Eldon Wollmann

Individual Explorer (\$50-\$99)

Marjorie Aakre
Mark & Lois Altenburg
Howard Anderson & Pat Hinze
Russell & Lois Bekkerus
Genelle Bentley
Mary E. Bolstad
Richard & June Chenoweth
Patrick A. Colliton
Nancy K. Cooper
Helen M. Danielson
Leland & Dorothy Delger
Roland & Beth Dille
Maybelle Dinsmore
Dorothy A. Dodds
Paul & Mardeth Dovre
Gordon & Carol Ekre
Jerome C. & Pamela Ekre
Mike & Pat Elton
Carroll & Joan Engelhardt
Katherine Erickson
Michael J. & Kathy Farrell
Howard R. Geng
Janet Gorman
Lloyd Gunderson
Ann P. Gytri
LaVerne Halverson
Ethel & Ralph Hest
Herman & Gail Holland
Arthur Holmgren

Gail D. Jordahl
Deborah Janzen & Terry Shoptaugh
Audrey Z. Jones
Heidi Kassenborg
Janet Kiefer Martin
Alden & Shirley Knatterud
Paul E. & Florence Korsmo
Lois L. Kundert
Neil H. Larson
Gloria Lee
John David Lee
Don & Alvina Lein
Bob & Phyllis Litherland
Ethel R. Medalen
Katherine Mentjes
Mr. & Mrs. Dan B. Murphy
Larry & Jan Nelson
Gisela S. Nobel
Beverly Nokken
Richard & Helen Pemble
Sherwood & Marilyn Peterson
L. Diane Pickett
James & Dorothy Powers
Paul Pratt
Eugene & Karen Prim
Elsie Quam
Pearl & Vern Quinnild
John Reber
Mel & Margaret Ristvedt
Edna J. Rude
Helen Rudie
Carol & Gordon Rustad
Barry & Renee Steen
Marge Stoa
Ray & Erma Stordahl
Don & Rose-Mary Strom
Alvin & Diane Swanson
Ronnie & Donna Tang
Kenneth & Mary Tangen
Bruce M. Thorson
Ron & Deanna Ulven
Nancy & Marc Valenzuela
Marguerite A. Wardeberg
Dale D. White
Dick & Kathy Zaylskie
Mary Kinsella Ziegenhagen
Carol Zielinski

New and Renewed Memberships

CCHS extends a special thank you to the following individuals who renewed or upgraded their memberships or became new members in January and February:

NEW MEMBERS

J. D. Bohlman, Barnesville
Bruce Karevold, Moorhead
Kurt Ketterl, Hawley
Mickelson Body Shop, Hawley
Heather M. Nelson, West Fargo

UPGRADES

Clayton & Doris Jorgenson, Moorhead
Helen Rudie, Fargo
Carol & Gordon Rustad, Moorhead
Nancy & Marc Valenzuela, Moorhead

RENEWALS

David R. Alme, Kennewick, WA
Mark & Lois Altenburg, Fargo
Leona P. Anderson, Hawley
Jeanne E. Aske, Moorhead
City of Barnesville
Olaf & Verna Cartford, Moorhead
Mark Chalimonczyk, Fargo

Rick Crume, Glyndon
Eventide, Moorhead
Mike & Dianne Fillmore, Hawley
Edith L. Flaa, Moorhead
Graham & Madrene Goeson, Mhd
Clarence & Donna Hanson, Ruso, ND
Neil & Polly Hanson, Glyndon
City of Hawley
Orval M. Hurner, Moorhead
Dr. John M. Jenkins, Sun City, AZ
Joyce R. Johnson, Glyndon
Evelyn Keeping Hansen, Hawley
Janet Kiefer Martin, El Cajon, CA
Carolyn J. Kirk, Andover, NJ
John & Jyl Kolness, Hendrum, MN
Francis Kukowski, Georgetown
John David Lee, Georgetown
Jane Loeffler, Moorhead
Jeff Longtine, Moorhead
Joe & Shirley Manning, Moorhead
Gretchen M. McDonald, Moorhead
Richard T. McMurray, Annandale, VA
Katherine Mentjes, LeCenter, MN
Eileen P. Michels, St. Paul, MN
Moorhead Kiwanis
Alvera Murch, West Fargo, ND
Charles A. Nelson, Surprise, AZ

Larry & Janet Nelson, Fargo
James Odegaard, Hawley
Bob & Helen Olson, Hawley
Charlotte Onstine, Tucson, AZ
Marlowe & Joan Parries, Moorhead
Bernice Peihl, Arthur, ND
Richard & Helen Pemble, Moorhead
James & Dorothy Powers, Fargo
Jean A. Prentice, Moorhead
Paul & Carol Quinnild, Barnesville
Grant & Peggy Ramstad, Hawley
Scheels All Sports, Moorhead
Fern A. Schellack, Moorhead
S. George & Diane Spangler,
Jamestown, ND
State Bank of Hawley
Sanford & Joyce Steen, Moorhead
James & Chris Stenerson, Moorhead
Ray & Erma Stordahl, Moorhead
Alvin & Diane Swanson, Moorhead
Bob Swenson, Moorhead
Diane Tweten Sylte, Benson, MN
Bernadine Ursin, Moorhead
Wayne & Loanna Wagstrom, Mhd
Duane Walker, Moorhead
Wright Funeral Home, Moorhead

Mystery Building, cont. from page 12

dazzling array of glassware. One of the punch bowls, it is stated, cost \$200... The room is illuminated with an immense number of electric lamps and three chandeliers. A wide stair case descends from the west side of the barroom to the parlors below."

The *News* goes on to describe the smoking room, club room and private dining rooms. Even the bathrooms:

"Passing from the barroom toward the east the visitor enters the lavatories of which there are two. They have marble floors, walls in imitation of marble tiling and are equipped with the latest modern plumbing, with nickel trimmings."

Also on the east side was the public restaurant, office and kitchen "equipped with steel ranges of the most improved pattern, and with all the various utensils for the best style of cooking. Nick Markov of Fargo will manage the restaurant.

"Behind the kitchen is the musical garden. This is suitably furnished, and here is the large pipe organ, 8 by 12 feet, which is chock full of music and plays all the latest and most popular airs." This nickelodeon reported cost Haas over \$5000. That's more like \$125,000 today.

The *News* article claimed "there are 363 electric lights in the building, with handsome globes." Apparently Haas added more later. A *News* advertisement from January 1898 claimed 400, corroborating Johnson's account.

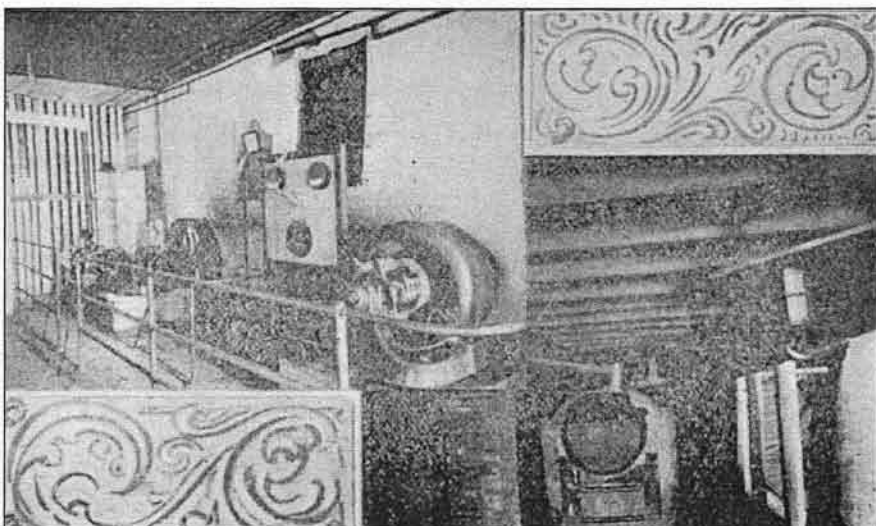
The electric lights caused something of a stir later that year. Council member Johnson headed up a committee to investigate management of the city owned power plant and found that Haas, along with several other saloon owners, had never paid to have his power hooked up or paid his bills. Haas soon installed his own light plant in the basement to power his 400 electric lamps.

Continued next page...

Mystery Building, cont. from page 14

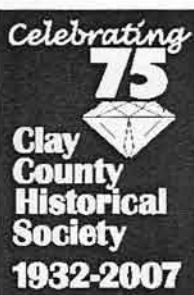
In all Haas' improvements cost \$15,000 (maybe \$375,000 today). It was likely money well spent. In 1902 he turned the saloon over to Norman Young who ran it for several years with a succession of partners. Young built a "New Midway" down the street in 1910 and sold the operation to J. E. Johnson. Charles Nelson ran it as the "Old Midway Buffet" from 1913 until Clay County went dry in July 1915.

The old building sat empty for some time. By 1922 it was home to a pool hall. The former palace disappeared, either burned or torn down, sometime between 1924 and 1927. The "Dutch Prince" had retired early to Detroit Lakes. He lost both legs to diabetes, moved back to Fargo and died there in 1918. He was only 55 years old.



After getting caught snitching electricity from the city, Haas installed his own power plant in the basement of his saloon.

Support CCHS! Become a Member or Recruit a new Member!

	Membership Level (check one)	Dues Amount	Benefits
	Pioneer Individual	\$25	Bi-Monthly Newsletter and Access to CCHS History Tours Free/Discounted Admission to CCHS Programs/Events 50% Discount on \$20 Per Hour Archival Research Fee \$1 Off Admission to Heritage Hjemkomst Interpretive Center
	Pioneer Family	\$40	All of the Above
	Explorer	\$50	All of the Above PLUS 25% Discount on Reproductions of Archival Photos 25% Discount on Acid-Free Supplies
	Trailblazer	\$100	All of the Above PLUS Frameable Membership Certificate
	Settler	\$200	All of the Above PLUS Four Tickets to Heritage Hjemkomst Interpretive Center One Hour of Free Archival Research
	Patriarch	\$500	All of the Above PLUS Frameable 8"x10" reproduction of Historic Photo of Choice Two Complimentary Tickets to the CCHS Annual Meeting
	Patron	\$5,000	10-Year Membership – All of the Above!

Businesses are eligible for Explorer, Trailblazer, Settler, Patriarch and Patron Memberships

Please complete the form below, and send with your check payable to "CCHS", to: CCHS, PO Box 501, Moorhead MN 56561

Name (for membership card) _____

Contact Name (for business) _____

Children's Names (for families) _____

Address/City/State/Zip _____

Telephone/Email _____

The Clay County Historical Society is a 501(c)3 nonprofit organization supported by members, the Clay County Commission, sponsors and grants. Contributions to the Clay County Historical Society are tax-deductible to the full extent of the law.

Attend the Annual Membership Meeting!

Wednesday, May 7

5:00-8:30pm

**Hjemkomst Center
202 First Avenue North, Moorhead**

Evening Schedule

5:00 Registration

6:00 Dinner

7:00 Business Meeting

7:45 Guest Speaker, *Nina Archabal, Executive Director, Minnesota Historical Society*

**Dinner Tickets:
\$18 CCHS Members**

*Available Monday-Friday
at the CCHS Office*



Nina Archabal

Calendar

- May 7 CCHS Annual Meeting
Guest Speaker: Nina Archabal,
MHS Executive Director
- May 11 Sesquicentennial of Minnesota
Statehood—activities in St. Paul
- May 26 Memorial Day, Clay County
Museum closed
- May 31 Breakfast on the Farm, Western
Minnesota Steam Threshers
Reunion Grounds, Rollag, MN
- June 27-28 Bergquist Cabin Open House, 1-4
- June 27-29 Scandinavian Hjemkomst Festival
- July 10-13 Clay County Fair, Barnesville
- July 20 Viking Village, 12-4pm, Heritage-
Hjemkomst Interpretive Center
- October CCHS History Tour, New Ulm, MN
- October 30 CCHS Gala—History Rocks!



CLAY COUNTY HISTORICAL SOCIETY

Hjemkomst Center
202 1st Ave N
PO Box 501
Moorhead MN 56561

Non-Profit
Organization
U.S. Postage Paid
Moorhead, MN
56561
PERMIT NO. 494

ADDRESS SERVICE REQUESTED



Check us out at:
www.info.co.clay.mn.us/history