


Clay County Historical Society

Volume XXX No. 2

Clay County Historical Society Newsletter

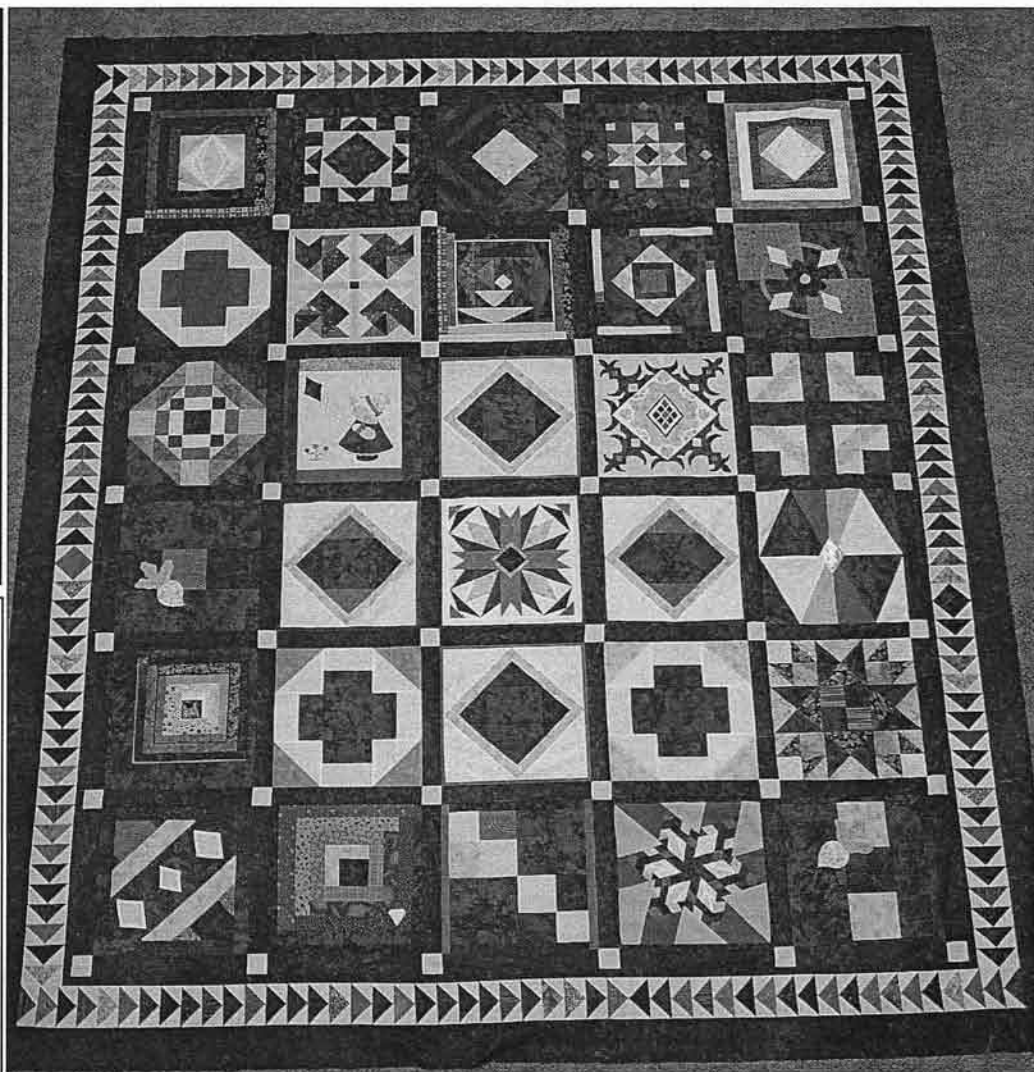
March/April 2007

Celebrating
75

**Clay
 County
 Historical
 Society**
1932-2007

In This Issue:

Pg Article

- 2 President's Message
- 3 Annual Meeting May 1
Quilts for Silent Auction
- 4 Bergquist Cabin June 22-23
Raffle & Membership Drive
- 5 Board Games Trivia
- 6 Outreach Displays and
Recent Acquisitions
- 7 Archives News
- 8 Steamboat Pilots'
Red River Placenames
- 12 Heritage Members and
Sponsors
- 13 Campus School book
Hall Case displays
- 14 New and Renewed
Memberships
- 15 Diamond Jubilee Fund
Drive Donation Form



Spectacular Quilts created for 75th Anniversary Gala Silent Auction!

Three beautiful quilts will go to lucky bidders at CCHS' 75th Anniversary Gala October 5. Pictured above is the *75th Anniversary Jubilee* quilt. See page 3 for more!

CLAY COUNTY HISTORICAL SOCIETY



Hjemkomst Center, 202 1st Avenue North,
PO Box 501, Moorhead, MN 56561-0501
Phone: 218-299-5520
www.info.co.clay.mn.us/history

BOARD OF DIRECTORS

Darren Leno, President, Moorhead
Rose Bergan, Vice President, Hawley
Alvin Swanson, Treasurer, Moorhead
John Elton, Secretary, Hawley
Carolyn Barden, Moorhead
Rodney Erickson, Moorhead
Jon Evert, County Rep., Moorhead
James Odegaard, Hawley
Gene Prim, Barnesville
Pearl Quinnild, Barnesville
Duane Walker, Moorhead
Dale White, Moorhead

STAFF

Lisa Vedaa, Director
lisa.vedaa@ci.moorhead.mn.us
Pam Burkhardt, Collections Manager
pam.burkhardt@ci.moorhead.mn.us
Mark Peihl, Archivist
mark.peihl@ci.moorhead.mn.us
Janet Nelson, Volunteer Coordinator
Claudia M. Pratt, 75th Project Director
Eileen Colton, Experience Works

NEWSLETTER PRODUCTION

Lisa Vedaa, Editor
Pam Burkhardt, Contributor
Mark Peihl, Contributor
Claudia M. Pratt, Contributor

CLAY COUNTY COMMISSIONERS

Ben Brunsvold, District 1
Jerry Waller, District 2
Jon Evert, District 3
Kevin Campbell, District 4
Mike McCarthy, District 5

President's Message

By Darren Leno, CCHS President



Clara's Gift

Clara Evenson was a faithful volunteer at CCHS and the Scandinavian Festival. She was also an active member, and enjoyed going on our history tours to historic sites in Minnesota. Although I personally had not enjoyed the pleasure of meeting Clara, she was well known to our staff and certainly made an impression on them.

Sadly, Clara passed away recently. That may have been the end of her participation in CCHS, but Clara had other plans. She cared so much about the mission and work of CCHS continue, that she arranged in her estate to make a generous annual financial gift to CCHS in perpetuity. We have received the first gift, and so we have this opportunity to remember her fondly. We are so grateful to her for the volunteer hours she put in while she was with us, and we are so appreciative that Clara will remain an important part of CCHS for many years to come.

Have you considered adding CCHS to your estate plan? Your attorney, accountant or financial advisor can tell you how easy it is to do, and can explain the tax benefits to your estate. For more information, please contact Lisa at the CCHS office.

Harry Rinker's Visit a Big Success

Last month we welcomed national radio personality and antiques appraisal expert Harry Rinker to Moorhead as part of our 75th Anniversary Celebration. Many people turned out to enjoy the presentation by Harry on the art (or disease, depending on your perspective) of collecting. He also hosted his syndicated national radio show from the Hjemkomst Center, and was very complimentary to our community and CCHS. His appraisal clinics were very well attended, resulting in nearly 100 new CCHS memberships. Rinker's visit garnered exposure for CCHS on local radio, local TV, and to a national radio audience. The *Forum* placed Rinker on the front page of the R&R section, and listed his appraisal clinics as one of their "Best Bets" of the day.

All in all, I would have to rank Harry's visit as a very successful event for CCHS. It showcased our society to a wide local audience as well as a national audience. Once again, we on the Board of Directors are indebted and appreciative to our staff and volunteers for their commitment to making Rinker's visit a success.

Thanks also to our dedicated sponsors, including KFGO 790-AM, Strand & Marcy Insurance, AmericInn of Fargo-Moorhead, Don and Alvina Lein, Hornbacher's Foods, Lynn Brakke Organic Beef, Moorhead Antique Mall, Mikkelson Insurance, Johnson & Johnson Insurance, Summit Financial Services, Lichtsinn-Anderson Insurance, and Gio's at the AmericInn, Speakeasy, Snap Dragon, and Village Inn Restaurants, who helped defray costs and make Harry's visit possible.

Harry told me he's looking forward to his next visit to Moorhead and Clay County. So are we, Harry!

Have you seen it yet?

Have you been to the Clay County Museum yet to see the thousands of artifacts on display in our exhibit, "Celebrating 75

Continued on page 10...

Clay County Museum Hours: 10-5 Monday-Saturday, 10-9 Tuesday, 12-5 Sunday
Hjemkomst Center, 202 1st Avenue North, Moorhead, MN ♦ FREE ADMISSION

Annual Meeting May 1 in Glyndon

CCHS is pleased to announce our Annual Meeting, May 1, May Day, at the Glyndon Community Hall. The evening will begin at 6:00 p.m. with dinner, followed by a brief business meeting with board member election and a program by CCHS Archivist Mark Peihl.

Peihl will discuss the lives and work of two well-known early photographers in Clay County, O. E. Flaten and S. P. Wange. A book of postcards printed by CCHS in 1982 using images from the photographers' collections states, "Although Flaten and Wange were primarily portrait photographers, both took the time to chronicle special occasions and items of interest in their communities. With this historic documentation, they created an impressive record of growth and development in Clay County. In the 1970s, the historical society acquired over 15,000 of the photographers' glass plate negatives taken between the 1870s and 1930s. These photographs have

been used endlessly by researchers, historians and genealogists and have been printed in numerous publications.

Three board seats will be open for election at the annual meeting. Two candidates are in place, and applications and nominations are being accepted for the third board seat. Darren Leno, current President of the CCHS Board, is eligible for election to a second three-year term and Gloria Lee of Georgetown has also been nominated. We extend our genuine thanks and appreciation to Alvin Swanson and Rodney Erickson for their six years of dedicated service to CCHS on the Board.

For dinner, guests will enjoy salad, roast beef au jus, potatoes au gratin, carrots, and brownie for dessert. The meeting is open to the public. Registration deadline is April 25. Tickets are \$15.00 per person, payable to CCHS. Mail your payment and registration to CCHS, PO Box 501, Moorhead, MN 56561, or register by calling 218-299-5520.

Quilts created for Silent Auction

By Pam Burkhardt, Collections Manager

Three quilts will be offered along with other "jewels" at CCHS' Silent Auction, part of the 75th Anniversary Gala on Oct. 5. Last November, we assembled fifty fabric packets along with an instruction sheet. The primary colors were purple with white and gold - our anniversary colors. Secondary colors were green, red and blue. The goal was to have volunteers take a packet and make a 15½"-square block containing the chosen colors and incorporating a diamond. The design and technique were left to the maker.

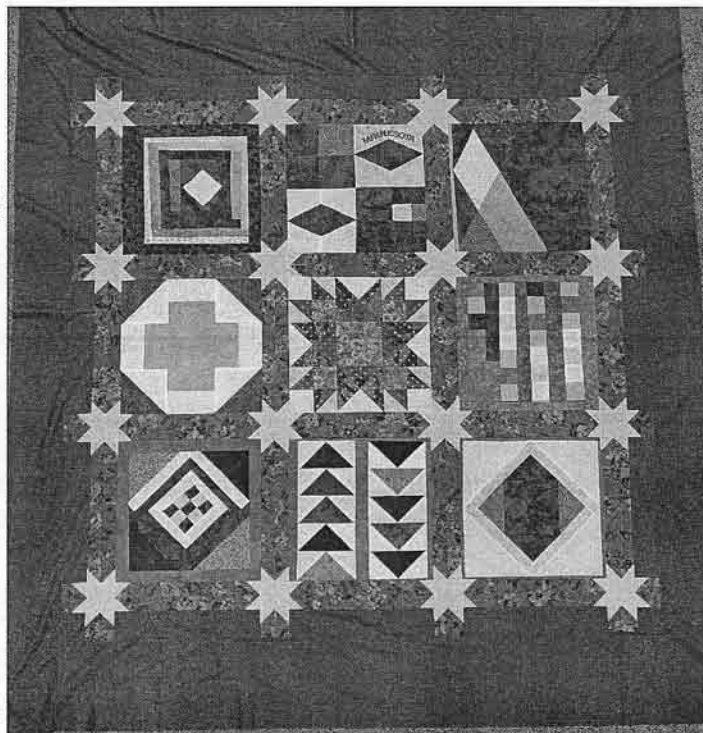
The Quilters' Guild of North Dakota took most of the blocks at their November

Christmas Luncheon. The rest were taken by volunteers

from Barnesville and Hawley, Heritage Lace Makers (centered in Fergus Falls) and friends and relatives of Historical Society staff. Some blocks were even passed on to quilters in more distant locations. In all, an amazing forty-six blocks were returned!

Designs were rendered in appliqué, reverse appliqué, regular piecing and paper piecing. The makers were encouraged to add some of their own compatible fabric to the block. A few quilters made more than one block from a single packet.

Read more about these fabulous quilts on the back page. . .



The North Star State Quilt.

Win \$750!

You could win the Grand Prize of \$750 in the Diamond Jubilee Raffle, one of the fundraisers for the 75th Anniversary Fund Drive! Tickets for the raffle are on sale now, available at the CCHS Office, from CCHS Board Members, at CCHS-sponsored events, such as the Bergquist Cabin Open House, and at CCHS booths at upcoming summertime community events. We currently plan to have a

booth at Breakfast on the Farm, Felton Field Days, Dilworth Loco Daze, the Clay County Fair, Glyndon's summer community celebration, and Barnesville Potato Days. Ten \$75 first prizes will also be awarded. Who can't use cold, hard cash?! 1,000 tickets will be sold at \$10.00 each. Buy your tickets now!

Bergquist Cabin Open House June 22 & 23

Have you ever visited the historic log cabin tucked away in a shady corner near the Red River in north Moorhead? Don't miss your chance this year, June 22 and 23! The historical society, along with the Swedish Heritage Society of the Red River Valley, will host the annual Open House at the cabin 1:00-4:00pm both days.

The cabin, at 1008 7th Street North, was originally built in 1870 by Swedish immigrant John Bergquist, and was reconstructed in the 1970s by Bergquist's great-grandson Jim Bergquist in a movement to save the cabin led by Jim's father, beloved long-time local television personality Dewey Bergquist. The cabin was turned over

to the historical society in 1989.

Refreshments will be served at the open house and you can try your hand at making a woven paper heart basket, a traditional Scandinavian craft, and register for door prizes. CCHS Archivist Mark Peihl will be available to discuss the cabin's fascinating history, and we will celebrate the 100th anniversary of the first woman to receive the Nobel Prize for Literature, Selma Lagerlöf for *The Wonderful Adventures of Nils*.

If the idea of trying to find the cabin on your own is daunting, hop the shuttle bus from the Scandinavian Festival that weekend at the Hjemkomst Center and join us!

Win a Framed Art Print! Help us Increase our Membership

(No purchase necessary)

75th Anniversary Membership Challenge!

You could win a framed art print just for introducing a friend or family member to the Clay County Historical Society!

CCHS has set a goal to increase our membership from 500 to 750 in honor of our 75th Anniversary in 2007. This means we would like to greet 250 new individuals, families and business to the Clay County Historical Society!

To meet this goal, the historical society is entering the names of all new members through 2007 in a drawing for a framed art print! The print will be a nostalgic scene to reflect the rich history and heritage of this area that the historical society exists to preserve.

We would also like to give our current members the opportunity to be entered for this fabulous prize, so any CCHS member who recruits a new member will also have their name entered for each new member registered by them! To help us, please make sure that your name is included with the new members' registration.

We know that you will want to help CCHS achieve this goal of increasing our membership and becoming better able to preserve Clay County's history! Start now with the membership form on page 15 of this newsletter!

Trivia about our Board Games

By Pam Burkhardt, Collections Manager

Board Game Background

Board games have been around for centuries. Early games included forms of backgammon (Mesopotamia, about 5,000 years ago), checkers (Egypt, about 3,400 years ago) and chess (India, about 1400 years ago). Appearing in 1843, *Mansion of Happiness* was the first mass-produced American board game. *Snakes and Ladders* is an ancient game from India. Its moral focus appealed to Victorian England. Its name was changed to the less reptilian *Chutes and Ladders* in the 1940s. Some popular games from the last century are still available in various editions: Monopoly (*Landlord's Game*, about 1904/*Monopoly*, 1935), *Uncle Wiggily* (1916), *Candyland* (1949) and *Scrabble* (1953).

Board Games in our Collections

The Monopoly game in particular provided a format for spin-offs. Dating from 1983, the *Fargo-West Fargo-Moorhead* game's layout is patterned after Monopoly. The copyright is 1983 by Milco (Arnold Miller) of La Crescent, Minnesota. Properties in the game are various businesses in Moorhead, Fargo and West Fargo including Sportland, DeLendrecie's and Larson's Supervalu. Laminated paper make the stiff playing surface. The game has play money and square beads for buildings called "branches." Rent for properties having one or two branches appear on each business's deed card plus a mortgage price for the property. No box seems to have come with this game.

Quiz Show Background

Knowledge games appeared on radio shows and offered prizes for correctly answered questions. The earliest program where quiz questions regularly appeared was *Vox Pop* out of Houston in 1932. Passers-by were rewarded for correct answers. The first true quiz show was *Professor Quiz* in 1936 on CBS radio. Shortly after, a verbal parlor game was turned into an early 1940s radio show called *Twenty Questions*. If a caller could stump the panelists they won a prize.

Quiz Shows in our Collections

In the late 1950s, WDAY radio, headquartered in Fargo, North Dakota, sent a consolation prize letter to a Felton "Listener" of the popular, national quiz

Continued on page 10...

Hawley Trivia

The *Hawley Trivia Game* was produced by Cricket Communications of Detroit Lakes, copyright 1987 by Wm. Jackson. It was one of the many games developed during the trivia craze in the early 1980s. Can you correctly answer three questions from this game?

1. Hawley's first permanent resident was an Irish immigrant who had worked for the NP Railroad as a section boss. His name was . . . (A) Sean O'Hawley, (B) Daniel O'Donnell, (C) Shamus Finnegan
2. Early farmers in Hawley had their grain ground at . . . (A) Morrison's Mill (B) Jacobson's Mill (C) Hawley Elevator
3. At one time Hawley boasted several auto dealers. What was the peak number? (A) three (B) five (C) six

Answers given in the 1987 *Hawley Trivia Game*:

1. B. He came to Hawley the same time as Carl G. Thysell who homesteaded three miles south on the Buffalo River. O'Donnell built a hotel and café.
2. C. Jacobson's was the most important mill commercially and burned November 27, 1903. Two other area mills were the Maltby, better know as the Kroll, and the Muskoda Mills.
3. B. Hawley reached that number after WWII.



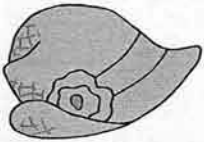
Wm. Jackson of Cricket Communications, Detroit Lakes, created the Hawley Trivia Game in 1987.

Outreach Displays

	<u>Open</u>	<u>Close</u>
Hawley Public Library	April	June
Moorhead Public Library	April	June
Barnesville Public Library	April	June
Fargo CVB	May	October

The Hawley Public Library's second photo display MOORHEAD 1923 features Moorhead photographer O.E. Flaten. Flaten photographed the exterior of buildings in downtown Moorhead in July and August of that year. You might be familiar with these images. Flaten used a number of these in postcards.

Moorhead Public Library patrons can go back in time courtesy of Hawley photographer S. P. Wange. Wange took interior shots of Hawley businesses in OCTOBER 1917. What was Hawley up to?



HATS are on display at the Barnesville Public Library. You will find hats, caps and bonnets from the 1880s to the 1960s. Find one worn at the Minnesota State Fair and one worn on a downhill trip and another associated with music.

Tourists will have FUN IN THE SUN at the CVB (Convention and Visitors' Bureau) in Fargo this spring and summer. Area visitors can attend ballgames, visit parks, fish and swim. The options are endless. Dogs are not forgotten either!



IN-HOUSE DISPLAYS

The 2007 Scandinavian Hjemkomst Festival will have displays featuring Norway in both level-three hall cases from mid-May to late July.

Beginning in August, CCHS will feature the following collections in the level-three hall cases, as part of the 75th Anniversary exhibition:

WWI military items from the **Walter & Agnes Manning Collection** (2001)

The **Ralph & Elsie Lee Collection** (1998)

The [Mrs. Albert] **Carlson Collection** (1937) and the **Agnes and Dora Gunderson Collection** (1984)

Artifacts from the **Barnesville Area Heritage Society Collection** (1991)

Find more information on these collections on page 13!

Artifacts & Donors

January and February 2007

Donors:

Moorhead: Beth Holes, Paula Bauck, Alvin Swanson, Jim Steen, Mae Gee

Hawley: Margaret Ristvedt

Fargo, ND: Dr. Ronald Olin

Artifacts: surveyor's chain used by Andrew Holes in the Moorhead-Fargo area; MSTC woolen beanie; CD containing photos from a scrapbook belonging to the Anna Rosell family along with a copy of a photo of a work crew; photo of Paula and son Rupert Bauck at the midtown dam on the Red River in 1947; booklets from the 50th and 75th Anniversary of the Kragnes Farmers' Elevator founded in 1911 and Clay County Fair premium lists from 1991 to 2001; color copy of a 1899 Fargo-Moorhead map by Evan Tyler; two woven wool hangings made around 1880 and three cornhusk "kitchen witches" made by Mildred Heifort; a 1951 cookbook compiled by the "Ladies Aid of the North Buffalo Church" titled *North Buffalo's Kitchen Secrets*; trade tokens for the Oxford Club, South Bridge, Moorhead, worth 5¢ in trade and the Aquarium Bar, Moorhead, worth 25¢.

Dr. Olin donated a number of advertising items in January 2007 including: Bennigan's menus; a 1910 Moorhead Normal School bulletin; MSU theater posters; glassware from Concordia College and Triumph Lutheran Brethren Church; a silver mug from American Crystal Sugar's 40th Anniversary; bottle openers from the Oxford Club Blue Room, Blackhawk Bar, Silver Moon Café and Hegland Sign Co.; milk bottle crates from Bridgeman and Fairmont Dairies as well as a milk can tag from the Crescent Milk, Inc.; Hawley trivia* board game; eyeglass cases (two containing glasses) from Sterling Optical, Dr. C. Tillisch and Dr. Ernest Peterson; also a teaspoon, photos, cups, ashtrays; paperweights, screwdrivers, hankie, rulers, pens, pinback buttons, pens, pencils and holders including an automatic pencil from Al's Potato company and a plate from the Barnesville Farmers' Elevator Company dated 1953.

One unusual item is a straight razor marked Geo. Erickson, Moorhead and has a clear, celluloid-covered handle. Under the celluloid on both sides are six tiny photographs or graphics of horses and horses pulling vehicles, two of scantily clad women and one baby! In all, this latest addition adds over 130 items to the total.

*see page 5 for more about this game

CCHS Receives Moorhead Daily News Microfilm

By Mark Peihl, CCHS Archivist

Through the cooperation of the Forum Communications Company and the Minnesota Historical Society, CCHS now holds a complete set of the *Moorhead Daily News* newspaper from 1882 to 1957.

Local newspapers are the single best source of information for local history researchers. CCHS has been pretty aggressive in acquiring microfilm copies of Clay County-published newspapers. Microfilm is basically a photographic copy of the paper. Technicians use special cameras to photograph each individual page of each issue. The roll of film is taken from the camera and processed to create a master negative. Any number of microfilm copies can be made from the negative. These film rolls can be viewed on reader/printer machines like the one in our Archives.

Over the last 30 years CCHS has collected either hard copy or microfilm of every newspaper published in Clay County held by the Minnesota Historical Society. Though Minnesota has a law requiring publishers to send one copy of each issue to the Minnesota Historical Society for preservation, many gaps exist in the state's collection. MHS' collection of the *Moorhead Daily News* (the newspaper of record for the western part of Clay County) is missing from 1906 through 1923. About 20% of the individual issues from the 1880s are also missing.

Several years ago, we learned that when the *Fargo*

Forum bought the *Moorhead Daily News* in 1955, the *Forum* inherited a complete run of the *News*. The *Forum* had Dakota Microfilming of St. Paul photograph the files. The *Forum* received copies of the films and disposed of the original papers. Dakota Microfilming held the master negatives. We contacted Dakota Microfilming in 1992 and began arrangements for getting copies made from their master negatives. But just before we placed the order the company was sold. For several months we followed a complex ownership trail to track down what happened to the negatives. Evidence suggested that they had been disposed of for the salvage value of their silver content. (Negatives contain a small amount of metallic silver.)

However, the *Forum* still had their copies. Late last year CCHS arranged with the *Forum* to send test copies to MHS to see if they could be used to create a new set of master negatives. The results were encouraging. In January we sent down the remaining rolls to cover the missing 1906-1923 years and the incomplete 1880s. After copying, MHS returned the films to the *Forum* and CCHS received a duplicate set for the Archives, where they are available for researchers.

CCHS thanks Lloyd Case, Matt Von Pinnon, Andrea Halgrimson and Carol Bradley Bursack of the Forum Communications Company and Steve Cunat of the Minnesota Historical Society for making this project possible!

LDS Church Digitizes CCHS Records

By Mark Peihl, CCHS Archivist

In February and March, the Genealogical Society of Utah, an arm of the Latter Day Saints' Church, created digital copies of several CCHS collections with genealogical significance. CCHS will receive DVDs of all of the materials for our use and copies will also be available for researchers to use at the LDS' massive Family History Center in Salt Lake City, Utah. Collections digitized include obituary files kept by CCHS staff and volunteers from the 1950s to the 1980s; a more extensive set of Biography Files also accumulated by CCHS; the Moorhead Public Library's Biography Files; Works Progress Administration (WPA) interviews done with early county residents in the 1930s and two series of World War II-vintage veterans service record cards. This was done at no cost to CCHS.

Until fairly recently, the LDS and GSU have microfilmed such records all over the country. Now they've switched

to digital imagery. In late February, GSU employee Michael Hanson set up a sophisticated digital camera and light stand in our graphics lab and laboriously shot each scrap of paper in each collection and Fed-Exed the images on portable hard drives to Utah, where they were burned to DVDs which were then shipped to us. CCHS will eventually wind up with about 16 DVDs.

CCHS is still reluctant to rely on digital copies for long-term preservation. Microfilm has been a great medium up until now. But for access to brittle and deteriorating clippings, it's tough to beat and it makes it much easier to make the materials available to users. We plan on mounting the WPA interviews on our website later this spring or summer. The veterans service cards may follow. Watch this space for further developments!

Our thanks to the Genealogical Society of Utah and the LDS Church for making this collaborative effort possible.

Steamboat Pilots'

Red River Placenames

By Mark Peihl, Archivist

"My boy, you must get a little memorandum book, and every time I tell you a thing, put it down right away. There's only one way to be a pilot, and that is to get this entire river by heart. You have to know it just like A B C." Steamboat Pilot Bixby to cub Pilot Samuel Clemmens in *Life on the Mississippi*, Mark Twain, 1882.

There are few periods in Red River Valley history more colorful than the steamboating era. Between 1859 and 1910, a score or more steamers plied the Red's muddy waters. To Valley residents their crews, from engineers to deckhands, held a near mythic status. But no one, not the owners nor Captains, ranked higher than the actual drivers of the boats, the Pilots. The Pilots were kings. They bore a tremendous responsibility for safely guiding the boats, crew, passengers and freight up and down the constantly changing, treacherous waterway. They astonished wheelhouse visitors with their arcane jargon, boat control and seemingly magical ability to read the river. Pilots had to memorize each and every point, bend or snag on the Red...and relearn it each trip. Each river landmark earned a name, often derived from some long forgotten incident or inside joke. "Smith's Island," "Catfish Bar," "Umbrella Bend," "Whiskey Chute" all described places on the Red.

In June 1876, newspaper editors E. B. Chambers of the *Fargo Times* and W. B. Nichols of the Moorhead *Red River Star* accepted an invitation from the officers of the sidewheeler *Cheyenne* for a trip "down country" to Grand Forks. Nichols continued on to Pembina aboard the *Minnesota*. Nichols was clearly impressed by Pilots John A. Kent of the *Cheyenne* and Aaron R. Russell of the *Minnesota* and the other officers and crew. The July 15, 1876 issue of the *Star* carried this:

"Questions for Inquisitive Persons to Ask the Officers of the Red River Boats. Any person or persons desirous of obtaining information in regard to the distances to the various points along the river – the probable time of reaching them – the length of time the boat will remain at a landing – why the boat will not remain longer – if the passengers will have time to go to the Post Office – the depth of the water – the geological, chronological, or agricultural statistics of the country – the population,



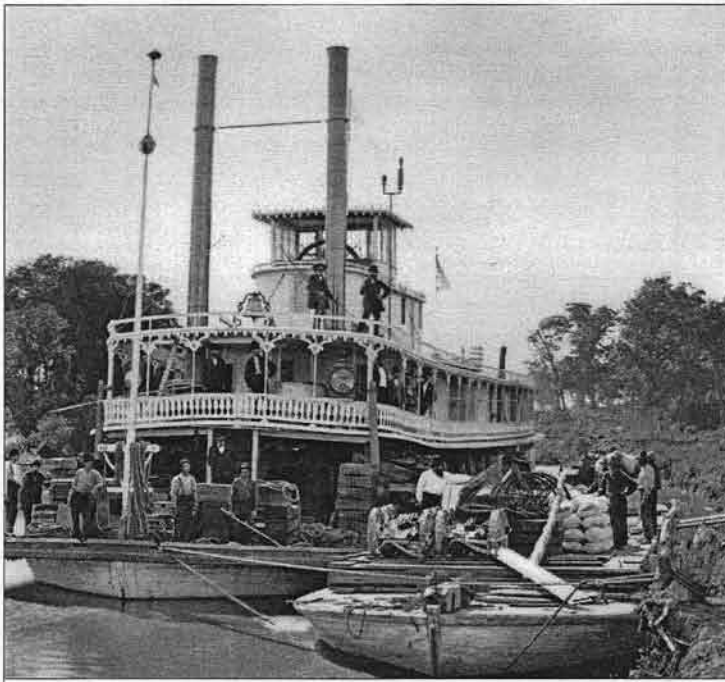
Steamboat *Dakota* at the Moorhead waterfront, spring 1877 - the year after Editor Nichols' boat ride. F. Jay Haynes photo. Montana Historical Society.

wealth, crops, leading or prominent characteristics of the people; their origin, average height, complexion, color of hair, eyes and eyebrows [this goes on for a full column]... and in general, all information of a geological, legal, medical, theological, metaphysical, ethical, biographical... grammatical or intellectual character can be accommodated by calling upon any of the courteous and gentlemanly clerks connected with the boat or in their absence, any information will be cheerfully given by the pilot, engineer, mate or deck hands."

Nichols requested from Pilots Kent and Russell a list of river landmarks from Moorhead to Winnipeg and their distance from Moorhead. On July 22 the *Star* published the list: 110 colorfully named bars, chutes, bends, islands and river mouths, including 14 locations in Clay County. A list "about as correct as one could wish for, without resorting to a pair of scales and a tape-line."

Years ago, when I came upon this remarkable document, I thought it would be fun to compare the list with a modern map of the Red and see where these places are. But, unfortunately, the Pilots' mileage estimates could have benefited from "a pair of scales and a tape-line." The mileage just didn't add up.

However, recently I began to wonder if the pilots' inaccuracies had some consistency. Many of the landmarks are readily identifiable today – river mouths, the locations of



Steamboat *Selkirk* at Moorhead, 1876. Heavily loaded barges made negotiating the Red's narrow twists particularly difficult. F. Jay Haynes photo. Montana Historical Society.

homesteads, etc. These include 7 of the 14 Clay County points. I compared the pilots' estimates with the mileages listed on River Keepers' new canoe route maps of the Red and Google Earth's detailed online aerial photos. The pilots occasionally misjudged wildly, but remarkably, most of the time they overestimated distances by a fairly consistent 75-80%. We can make some educated guesses about where these points were and what they look like now. These are the Clay County landmarks:

Moorhead. Simple enough. The waterfront was located just downstream from the Northern Pacific Railway Bridge (about where the Center Avenue Bridge crosses today - see map, right).

Brewery Bar. 1 mile. Using our 75-80% figure, this works out to just downstream from today's north railroad bridge (the bridge wasn't there in 1876.) This also seems logical. The previous year, two Irish brothers from Winnipeg named Larkin built a brewery right where the tennis courts sit in Riverfront Park, just east of this spot. The brewery was likely visible from the river. The bar refers not to a place where one could slake one's thirst, but a ridge of clay on the river bottom - something for a steamboat to avoid.

Washout Chute. 1¾ miles. Sticking with the 75-80% figure, this would be just upstream from the bicycle bridge between Fargo's Oak Grove Park and Moorhead's Memorial Park. A chute referred to a narrowing of the river where the water sluiced through rapidly. This could be from an obstruction blocking part of the channel.

View Bend. 2 miles. This is probably the bend around the north end of Fargo's Oak Grove Park. Coming upstream around this bend would give steamboat riders their first view of Moorhead.

Chimney Bend. 10 miles. Here the pilots guessed badly. Chimney bend is actually only about 5¾ miles downstream from the waterfront. The bend was a well known trouble spot for the steamboats. The Red is notoriously crooked. Though it's only about 240 miles from Moorhead to Hudson Bay as the crow flies, river miles add up to over 450. Captain Charles Wanzer, in an Army Corps of Engineers report, called the Red "a perfect system of short bends. In some cases a distance of one mile by water will accomplish but 300 feet by land." This was such a place. Pilots probably called this Chimney Bend because one could clearly see the smokestack of another steamer a few hundred feet across a neck of land while still a mile away via the river. The bend, however, is no more. In 1959, the Army Corps of Engineers cut off the bend in an effort to rush flood waters quickly out of downtown Fargo-Moorhead. This was part of the Fargo Flood Control Project which resulted in the building of the mid-town dam and dike near Fargo's Island Park (see "St. John's Dike and River Change," CCHS Newsletter, September/October 1990). The northern part of the project involved cutting off Chimney Bend permanently, but cutting only partial channels across two other sharp bends. Weir dams in these cut offs hold normal flows in the Red's usual path, but allow high waters to pass over them. In 1961, President John Kennedy signed legislation changing the border between the states and the nine acres of Minnesota

Continued on page 11...



President's Message, cont. from page 2

Years of Collecting?" If not, don't delay! Come out and visit us, and please bring a friend. There are so many interesting things to see and learn. Please don't put it off another week – just stop by the lower level of the Hjemkomst Center, and let me know if you agree that this is one of the best exhibits we've done so far.

MemberShip Update

The CCHS MemberShip has set sail, and many new people are climbing aboard! This issue of our newsletter will greet

nearly 100 new members! During the next year, we look forward to demonstrating the value of CCHS membership to all of our members.

To get the most of your membership, be sure to note the dates of special events and activities. I look forward to seeing you at the next get together. Sure, the newsletter is a great benefit and its fun to read, but it's always more fun when we get together to celebrate our history and heritages. CCHS is more than a newsletter – it's a community! So I'll see you at the next event, which is our Annual Meeting, and after that, a Memorial Day service at the Yankee Cemetery!

Games, cont. from page 5

show *Tello-Test Time*. The listener had received a call from the local edition of the show, but had failed to answer the question correctly. The consolation prize was four 2-cent stamps. **This letter with consolation prize is currently on display in our 75th Anniversary exhibit.**

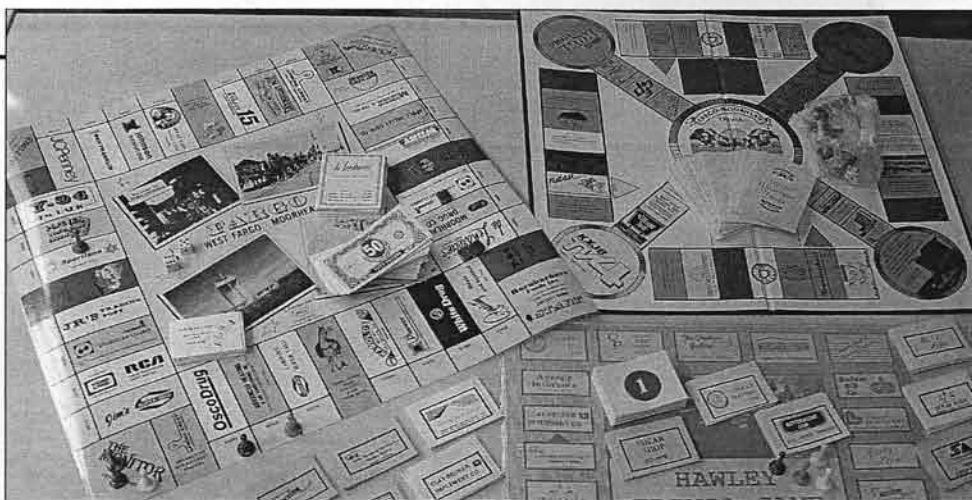
Trivia Game Background

In the late 1940s, the quiz show *You Bet Your Life* with Groucho Marx started on radio and later moved to television. During the early TV years, quiz-style shows were renamed games shows. *Jeopardy*, a more serious game show first aired in 1964 and is still running. *Jeopardy* is knowledge-based and focuses on selected categories. This format was used successfully in the trivia craze that hit the nation in 1981. The term *trivia* refers to information of minor importance and, now, has become associated with question and answer games.

Two Canadians Chris Haney and Scott Abbott conceived *Trivial Pursuit* in 1979. Its initial release was in 1981, but it took off in 1983 when game manufacturer Selchow and Righter became the distributor. Following this trivia craze, small but enterprising companies produced similar games, but with local trivia.

Trivia Games in our Collections

Dr. Olin recently donated an area trivia game in January doubling the number of such games in our collections. *The Minnesota Trivia For Everyone*. The box says it is a *fun state of Minnesota trivia game with emphasis on the above town – Hawley Trivia Game*. The game was produced and marketed by Cricket Communications, Inc. of Detroit Lakes, in 1987 by Wm. Jackson. This boxed



Fargo-Moorhead Trivia Games

game has a laminated "board" with a game path only around the perimeter containing mostly Hawley businesses. Four plastic game pieces and two kinds of cards are included - question cards and numbered "dot" cards. A player answers questions depending on the card he draws. He either answers directly from a card in the business pile (containing Minnesota trivia) or (drawing a dot card) from the question book (Hawley trivia). The game sold for \$9.95. (See page 5 for a few questions from this game.)

In 1985, Butler Games of Rochester, Minnesota produced *Fargo-Moorhead Trivia*. The Clay County Historical Society helped prepare questions for the game. This boxed game has a rigid game board that folds for storage, plastic game pieces and two dice. Like other games the player cannot move forward unless a trivia question is answered correctly. The game board has local businesses printed on a path around the perimeter as well as four leading to the center. We have several of these 1985 games in the collections.

Steamboat Pilots' Red Placenames, cont. from page 9

surrounded by Chimney Bend suddenly became part of North Dakota.

Probstfield's Point. 11 miles. Randolph Probstfield was one of Clay County's earliest permanent settlers. He and his wife Catherine built a home and farm on the Red here in 1864. It's now on the National Register of Historic Places.

Prairie Farm. 15 miles. This is likely the site of today's Edgewood Golf Course. We'll have to do more research on the history of this spot.

Grecian Bend. 16 miles. This is likely one of several bends which make a nice S-shape between Trollwood Park and the Broadway Bridge. "Grecian Bend" referred to the side view of a woman's body when shaped by an exaggerated bodice and bustle fashionable in the late 19th century.

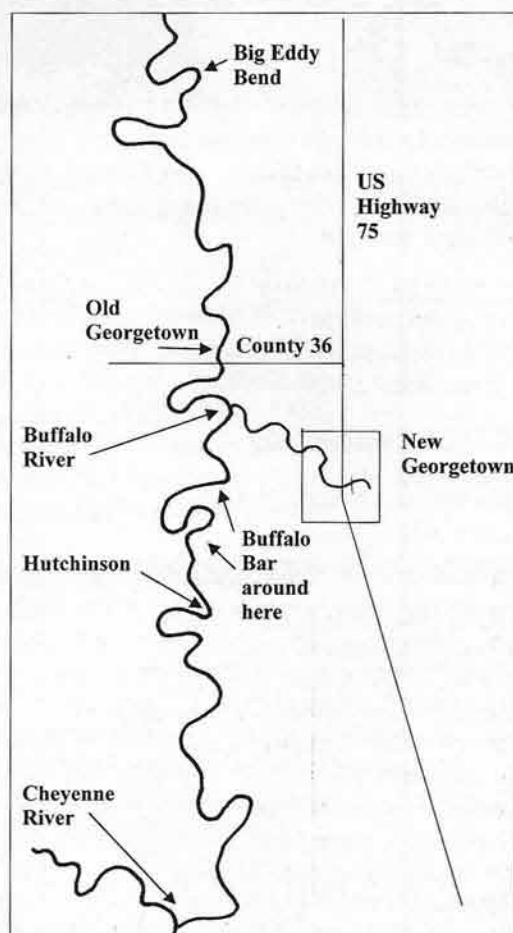
Cheyenne River. 30 miles. The river, now known as Sheyenne, still flows into the Red four miles northwest of Kragnes.

Hutchinson. 40 miles. Edward Hutchinson was another early permanent settler. He filed a claim on the Red a mile southwest of Georgetown in 1870.

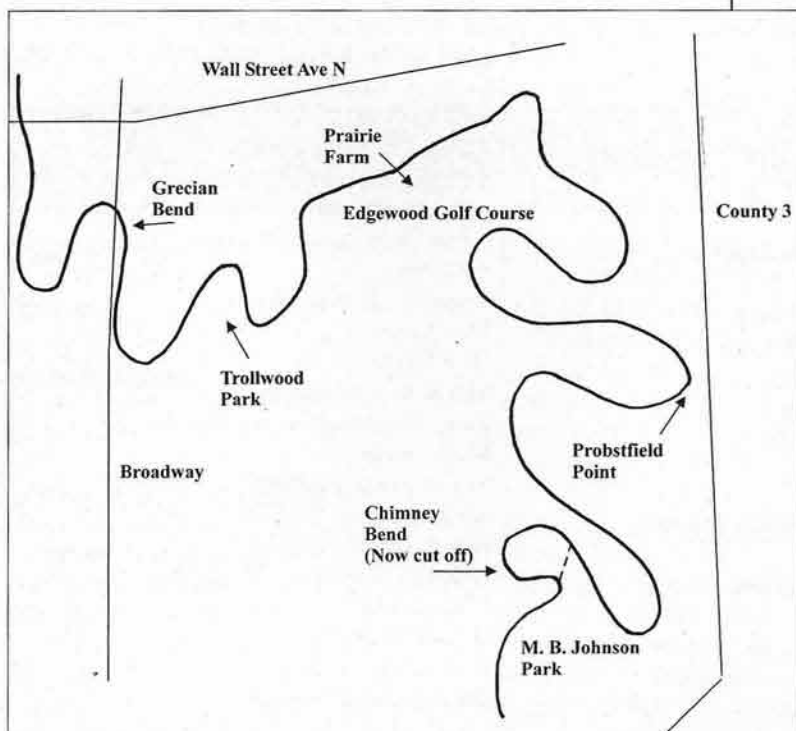
Buffalo Bar. 41 miles. Bars come and go as the Red changes. This one may be gone but I'm looking forward to looking for it in my canoe this summer (watch this space).

Buffalo River. 43 miles. Here again, the Buffalo still runs into the Red a mile northwest of Georgetown.

Georgetown. 45 miles. Not the "new" Georgetown on U. S. Highway 75, Old Georgetown had been an important Hudson's Bay Fur Trade Company depot where furs coming south from Canada on steamboats would be transferred to Red River Carts for the remaining trip to St. Paul. Trade goods going north were transferred here as well. By 1876, rails connections at Moorhead had mothballed the little community.



Big Eddy Bend. 46 miles. Water swirling around this bend likely gave it its name.



"My boy, you've got to know the SHAPE of the river perfectly. It is all there is left to steer by on a very dark night. Everything else is blotted out and gone. But mind you, it hasn't the same shape in the night that it has in the day-time."

"How on earth am I ever going to learn it, then?"

"How do you follow a hall at home in the dark. Because you know the shape of it. You can't see it."

"Do you mean to say that I've got to know all the million trifling variations of shape in the banks of this interminable river as well as I know the shape of the front hall at home?"

"On my honor, you've got to know them BETTER than any man ever did know the shapes of the halls in his own house."

Life on the Mississippi, Mark Twain, 1882.

Heritage Members and Sponsors

Please help us thank these business members for supporting the Clay County Historical Society by patronizing them with your business:

PATRIARCH (\$500+)

City of Barnesville
CM Associates, Richard T. McMurray,
Annandale, VA

SETTLER (\$200-\$499)

Eventide
First National Bank of Hawley
Mac's, Inc.
State Bank of Moorhead (Sponsor)

TRAILBLAZER (\$100-\$199)

Dilworth/Glyndon/Felton ISD
Don's Car Wash, Inc.
Harmon Glass Doctor of Moorhead
Hawley Public Schools
City of Hawley
Korsmo Funeral Service
Moorhead Antique Mall
Moorhead Area Public Schools
Moorhead Midday-Central Lions
Moorhead Vikingland Kiwanis
Muffler Man, Inc. (Sponsor)
Rigels, Inc.
Scheels Moorhead
Sellin Brothers, Inc.
State Bank of Hawley
Wright Funeral Home
YHR Partners, Ltd.

EXPLORER (\$50-\$99)

Bentley & Bentley, DDS
Fargo-Moorhead Heritage Society
McLarnan, Hannaher & Skatvold
Moorhead Ace Hardware
Moorhead Area Retired Educators
Moorhead Drug Company
Richtman's Press Club
Stenerson Lumber
Veterans of Foreign War, Post 1223

The number of members in the following categories continues to grow! Thank you to all of our wonderful members for your tremendous support.

Individual Patron (\$500+)

Elsie Pitsenbarger, Fargo
Darren & Jane Leno, Moorhead

Individual Settler (\$200-\$499)

David R. Alme, Kennewick, WA
Lynne M. Olson, Fargo
Jim & Chris Stenerson, Moorhead

Individual Trailblazer (\$100-199)

Robert & Selma Anderson
Rod & Audrey Angstman
Carl L. & June Bailey
Roland & Carolyn Barden
Jim Bergquist & Jane Eastes
Al & Meredith Bloomquist
Kevin & Kristy Campbell
Dr. Yvonne Condell
Paul & Joyce Eidbo
John & Audrey Elton
Rodney Erickson
Graham & Madrene Goeson
Burton & Catherine Grover
Delmar & Rhoda Hansen
Andre & Emily Houglum
Hal F. Janneck
Ardee & Eunice Johnson
Richard & Sharon Krabbenhoft
James H. Landblom
Robert & JoAnn Nyquist
E. Robert & Donna Olson
Esther O. Olson
Charlotte Onstine
Elaine G. Oss
Lloyd & Bev Paulson
James & Dorothy Powers
Donna M. Richards
Karol Kay Peterson Rood
Bev & John Rowell
Steve & Lucia Schroeder
Hazel & Davis A. Scott
William Snyder
Ruth & Olin Storvick
Phyllis W. Thysell
Ron & Deanna Ulven
Mark & Donna Voxland
Marguerite A. Wardeberg
Tom & Sherry Watt
Ron & Loretta Welch
Eldon Wollmann

Individual Explorer (\$50-\$99)

Marjorie Aakre
Howard Anderson & Pat Hinze
Sharon Benzel
Gary & Rose Bergan
Richard & June Chenoweth
Patrick A. Colliton

Helen Danielson
Jim & Portia Danielson
Leland & Dorothy Delger
Roland & Beth Dille
Maybelle Dinsmore
Dorothy Dodds
Gordon & Carol Ekre
Carroll & Joan Engelhardt
Katherine Erickson
Jon D. & Phyllis L. Evert
Michael J. & Kathy Farrell
Howard R. Geng
Janet Gorman
Patty Gulsvig
Lloyd Gunderson
Ethel & Ralph Hest
Herman & Gail Holland
Beth & Tom Iverson
Gail D. Jordahl
Paul E. & Florence Korsmo
Lois L. Kundert
Morrie & Ruth Lanning
David & Anne Larson
John David Lee
Don & Alvina Lein
Jay & Rebecca Leitch
Bob & Phyllis Litherland
Janet K. Martin
Solveig Mead
Ethel R. Medalen
Kathy & Ron Mentjes
Dan & Faith Meurrens
Mr. & Mrs. Dan B. Murphy
Larry & Jan Nelson
Gisela S. Nobel
Bev Nokken
Richard & Helen Pemble
Sherwood, Jr. & Wendy Peterson
L. Diane Pickett
Lloyd G. & Earlyce Pladson
Paul Pratt
Eugene & Karen Prim
Elsie Quam
John Reber
Mel & Margaret Ristvedt
Terry Shoptaugh & Deborah Janzen
Marge Stoa
Ray & Erma Stordahl
Alvin & Diane Swanson
Bob & Linda Swanson
Bruce M. Thorson
Chris & Ellen Velline
Dale D. White
Dick & Kathy Zaylskie
Dave & Carol Zielinski

Campus School remembered in new book

Baby Dragons: The Story of Moorhead's Campus School, 1888-1972. By Steve Grineski, Professor, Minnesota State University Moorhead

Using over 260 photographs, original documents, and interviews with former students and teachers, a new book by MSUM professor Steve Grineski tells the story of the Moorhead Campus School. The school had three campus homes: Old Main (1888-1908), the Model School Building (1908-1930), and Lommen Hall (K-12 school 1932-1972, and Early Education Center 1972 to present), and enjoyed a fine reputation for innovative and progressive teaching, caring about its students, and providing college students with a wonderful place to learn the craft of teaching. The 'Baby Dragons' were well known up and down the valley for exceptional music and theater productions as well as successful athletic teams. One well-known alumnus is Gary Larson who grew up near Sabin and went on to play professional football for the Minnesota Vikings. If you have any connection to the campus school, MSUM, or are interested in local history, you will enjoy this book.

This book is supported through a grant from the National Association of Laboratory Schools with assistance from MSUM. All proceeds from book sales will be used to fund a scholarship for students from the Red River Area Learning Center—Moorhead School District's Alternative High School. Books are \$15.00 and can be purchased at Zandbroz Variety, through the web site www.mnstate.edu/babydragons, or at the MSUM Alumni Office, phone number 218-477-2134.

Questions? Contact Steve Grineski at 218-477-2017 or send an email to grineski@mnstate.edu.

Major CCHS collections showcased in hall displays

Beginning in August, CCHS will feature the following collections in the level-three hall cases, as part of the 75th Anniversary exhibition:

World War I military items from the **Walter & Agnes Manning Collection** (2001). Walter J. Manning (1894 – 1986) worked for the Northern Pacific Railway in Dilworth. He married Agnes Stai (1899 – 1994) of Hillsboro, North Dakota. In September 1917, Manning enlisted in the Army and served with the 29th Engineers in France. He saved more interesting things than you can imagine.

The **Ralph & Elsie Lee Collection** (1998) has small seating barrels (pre-1947) from the MSTC Campus School library, girls' toys, a collection of tallies saved during years of playing bridge as well as a small collection of paperclips. Elsie began collecting paperclips in 1945 while she worked in the Registrar's Office at the University of Minnesota. Elsie also started a scrapbook in 1941 adding items to subsequent scrapbooks (36 in all) until only a few months before her death in 2001.

The [Mrs. Albert] **Carlson Collection** (1937) and the **Agnes and Dora Gunderson Collection** (1984) are small but represent Sweden and Norway respectively. Select items illustrate what "came over from the old country."

Artifacts from the **Barnesville Area Heritage Society Collection** (1991) focus on the Barnesville area. Included in the display are business and sports-related artifacts.

75th Anniversary Sponsors

\$1,000 Donors

Arnie Ellingson
Paul Pratt

Exhibit Sponsor

CCHS Heritage Members
Kay Mahar

Buffalo Fire Engine Sponsors

Darren & Jane Leno
Charlotte Onstine
Donna M. Richards
Hazel & Davis Scott

Harry Rinker Events Sponsors

KFGO 790-AM
Strand & Marcy Insurance
AmericInn of Fargo-Moorhead
Don and Alvina Lein
Hornbacher's Foods
Lynn Brakke Organic Beef
Moorhead Antique Mall
Mikkelson Insurance
Johnson & Johnson Insurance
Summit Financial Services
Lichtsinn-Anderson Insurance
Gio's at the AmericInn
Speakeasy Restaurant
Snap Dragon Restaurant
Village Inn Restaurant

Clay County Fair Ice Cream Social

Jon and Phyllis Evert

General 75th Sponsors

Jerry Dow
Gate City Bank
Janice & Erling Linde
Mark & Donna Voxland

New and Renewed Memberships

CCHS extends a special thank you to the following individuals who renewed or upgraded their memberships or became new members in January and February [editor's note: new members who joined for Harry Rinker events will be listed in the May/June newsletter]:

NEW MEMBERS

Marjorie Gjevne, Moorhead

*Jim Marcil, Moorhead

John Reber, Rothsay, MN

Lester & Joan Sorenson, Georgetown

Thoreson Plumbing, Inc., Moorhead

Nancy Valenzuela, Moorhead

*Gift Memberships

UPGRADES

Helen Danielson, Moorhead

Eventide, Moorhead

Glenn Gilbery, Georgetown

Graham & Madrene Goeson, Mhd

Richard T. McMurray (C. M.

Associates), Annandale, VA

Kathy & Ron Mentjes, LeCenter, MN

Steve & Lucia Schroeder, Glyndon

Jim & Chris Stenerson, Moorhead

RENEWALS

David R. Alme, Kennewick, WA

Joel Belgum, Moorhead

Ben E. Brunsvold, Moorhead

Richard & June Chenoweth, Isanti

Grace E. Clark, Moorhead

Rick Crume, Glyndon

Jim & Portia Danielson, Moorhead

Leland & Dorothy Delger, Fargo

Roland & Beth Dille, Moorhead

Dilworth/Glyndon/Felton School Dist.

Gladys L. Durensky, Barnesville

Harry & Phyllis Fillafer, Moorhead

Mike & Dianne Fillmore, Hawley

Edith L. Flaa, Moorhead

Neil M. & Deborah J. Frederickson, Fgo

Orval M. Hurner, Moorhead

Beth & Tom Iverson, Moorhead

Clayton & Doris Jorgenson, Moorhead

Carolyn J. Kirk, Andover, NJ

Jeanette H. Ladwig, Barnesville

Keith A. Larson, Hawley

Robert & Dorothy Larson, Moorhead

Mary Leach, Glyndon

John David Lee, Georgetown

Jane Loeffler, Moorhead

Janet K. Martin, El Cajon, CA

Alvera Murch, West Fargo

Charles A. Nelson, Surprise, AZ

Donna Nelson, Moorhead

Doris V. Olich, Moorhead

*Charles Onstine, Tucson, AZ

Charlotte Onstine, Tucson, AZ

*Scott & Diane Onstine, Tucson, AZ

Marlowe & Joan Parries, Moorhead

Bernice Peihl, Arthur, ND

Richard & Helen Pemble, Moorhead

Jean A. Prentice, Moorhead

Sara Pudas, Champlin, MN

Grant & Peggy Ramstad, Hawley

Richtman's Press Club, Fargo

Andrea Rootham, Glyndon

Helen Rudie, Fargo

Gordon & Carol Rustad, Moorhead

Lois Selberg, Moorhead

Sellin Brothers, Inc., Hawley

William Snyder, Fargo

State Bank of Hawley

Sanford & Joyce Steen, Moorhead

Ray & Erma Stordahl, Moorhead

Alvin & Diane Swanson, Moorhead

Bob & Cindy Swenson, Moorhead

Diane Tweten Sylte, Benson, MN

Chris & Ellen Velline, Torrance, CA

*Allison Veselka, Tower City, ND

Esther M. Vollbrecht, Moorhead

Dudley C. Wells, Moorhead

Dave & Carol Zielinski, Moorhead



Great Gifts at CCHS!

Remember to check the Clay County Historical Society for that special person on your gift list this year!

We have several great books plus acid-free supplies for protecting your treasured family heirlooms and documents.

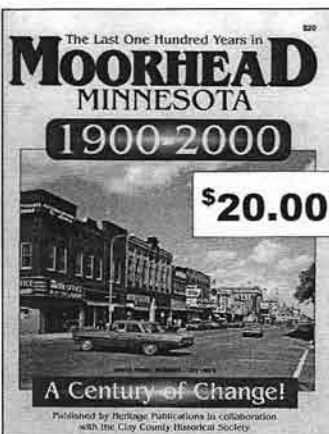
Books include:

Souvenir of Moorhead, 1905-1906, 52 p. \$10.00

Moorhead, 1900-2000: A Century of Change, 184 p. \$20.00

Fargo, ND, From Frontier Village to All America City, 1875-2000, 168 pp. \$20.00

Shop today at the Clay County Museum & Archives in the Hjemkomst Center, 202 1st Avenue North, Moorhead, or send your check or money order with the order form below to CCHS, PO Box 501, Moorhead, MN 56561.



Ship To:

Name _____

Address _____

Phone Number _____

Order:

___ Souvenir Book—\$10.00 ea. _____

___ Moorhead or Fargo book—\$20.00 ea. _____

___ Postage—\$2.00 per book _____

MN sales tax (6.5%) _____

Total _____

Amount: _____

**Celebrating
75
Clay
County
Historical
Society
1932-2007**

*Connecting
People
to the History
of Clay County,
Minnesota
for 75 Years!*

*Feel free to
tear off this
page of the
newsletter to
send in your
contribution for
the Jubilee
Fund Drive!*

Preserving our Past, Funding our Future

Diamond Jubilee Fund Drive - \$75,000 for the 75th Anniversary!

Become a Collections Steward!

Level	Amount	Benefits
Penny Campaign	\$7.50	Vintage Photos of Rural Life Postcard Book
Supporter	\$75	Souvenir of Moorhead 1905-1906 Book
Donor	\$250	Frameable 8"x10" Historic Photo of CCHS Property
Sponsor	\$1,000+	Artist's Print of Clay County Landscape

I wish my contribution to be dedicated toward a Collections Fund and/or 75th Anniversary Projects:

- | | |
|--|--|
| <input type="checkbox"/> 75 th Anniversary Projects | <input type="checkbox"/> Collections: Archives & Artifacts |
| <input type="checkbox"/> 1870s Pioneer Bergquist Cabin | <input type="checkbox"/> 1895 District No. 3 Woodland School |
| <input type="checkbox"/> 1936 Buffalo Fire Truck | <input type="checkbox"/> 1875 Parke Township Yankee Cemetery |

Become a Member/Renew Your Membership!

Level (please check one)	Amount	Benefits
Pioneer Individual	\$25	Bi-Monthly Newsletter Access to CCHS History Tours Free/Discounted Admission to CCHS Programs/Events 50% Discount on \$20 Per Hour Archival Research Fee \$1 Off Admission to Heritage Hjemkomst Interpretive Center
Pioneer Family	\$40	All of the Above
Explorer	\$50	All of the Above PLUS 25% Discount on Reproductions of Archival Photos 25% Discount on Acid-Free Supplies
Trailblazer	\$100	All of the Above PLUS Frameable Membership Certificate
Settler	\$200	All of the Above PLUS Four Tickets to Heritage Hjemkomst Interpretive Center One Hour of Free Archival Research
Patriarch	\$500	All of the Above PLUS Frameable 8"x10" reproduction of Historic Photo of Choice Two Complimentary Tickets to the CCHS Annual Meeting
Patron	\$5,000	10-Year Membership – All of the Above!

Businesses are eligible for Explorer, Trailblazer, Settler, Patriarch and Patron Memberships

Contribute an Item for the Silent Auction October

Item	Value (\$25+)	Description

I will support Clay County Historical Society's \$75,000 Goal!

Please complete the following, enclose your check payable to "Clay County Historical Society", and send to: CCHS, PO Box 501, Moorhead MN 56561

Amount \$ _____

I wish my gift to be anonymous: ☐ Yes

Name (for membership card) _____

Contact Name (for business) _____

Children's Names (for families) _____

Address/City/State/Zip _____

Telephone/Email _____

Your generosity is greatly appreciated. Thank you for helping us to reach our \$75,000 Goal!

The Clay County Historical Society is a 501(c)3 nonprofit organization supported by members, the Clay County Commission, sponsors and grants. Contributions to the Clay County Historical Society are tax-deductible to the full extent of the law.

**CLAY
COUNTY
HISTORICAL
SOCIETY**

Hjemkomst Center
202 First Avenue North
PO Box 501
Moorhead MN 56561
Phone: 218-299-5520
www.info.co.clay.mn.us/history

Anniversary Auction Quilts,
continued from page 3

Our new Experience Works employee Ruth Miller was assigned the daunting task of arranging the blocks and constructing a quilt top. With the addition of sashing and borders, there were enough blocks for *three* quilts!

The spectacular 75th *Anniversary Jubilee Quilt* is king-sized (105" x 120") and full of jewel-tones with purple, white and gold. The *Mighty Red* (75" x 97") has blocks floating on an icy background inside a red border. The *North Star State Quilt* (80" x 73") features blocks soaring in a starry, deep blue sky. Local machine quilters will do the quilting.

You can see the quilts in their full-color glory at the museum (ask for Pam), or at the CCHS booth at various community events throughout this summer, including the Clay County Fair July 12-15. Pillows made from the remaining fabric will also be on the silent auction October 5.



The Mighty Red



CLAY COUNTY HISTORICAL SOCIETY

Hjemkomst Center
202 1st Ave N
PO Box 501
Moorhead MN 56561

Non-Profit
Organization
U.S. Postage Paid
Moorhead, MN
56561
PERMIT NO. 494

ADDRESS SERVICE REQUESTED



Check us out at:
www.info.co.clay.mn.us/history