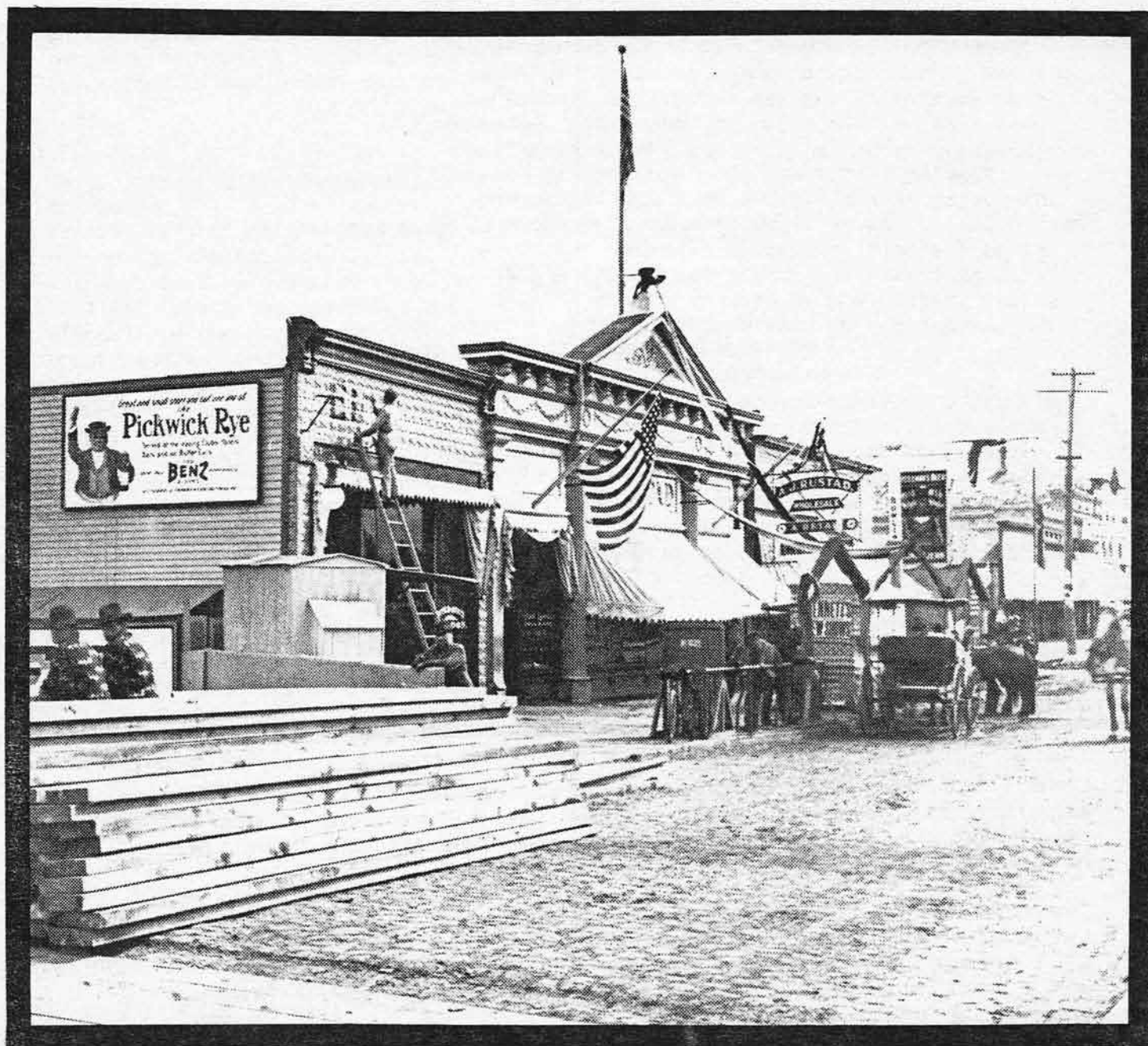


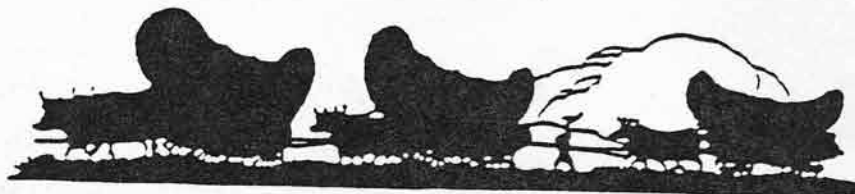
## CLAY COUNTY HISTORICAL SOCIETY

*Newsletter*

March 15, 1990 VOL. XIII NO. 2



A.J. Rustad's Saloon, Moorhead, MN. ca: 1905



## Board of Directors

Vern Pederson, President  
John Butze, Vice President  
Norman Bjorndahl, Treasurer  
Nancy Tedros, Secretary  
Mercedes Roos  
Dan Skolness  
Lee Richards  
Sherwood Peterson  
Mary Knopfler  
Loren Helmeke  
Kelly Aakre  
Arvid Thompson, Clay County Representative

## Staff

Mark Peihl, Archivist  
Pamela Burkhardt, Collections' Manager  
Margaret B. Ristvedt, Office Manager

## Volunteers

Jim Nelson, Archives  
Jeff Kroke

## Interns

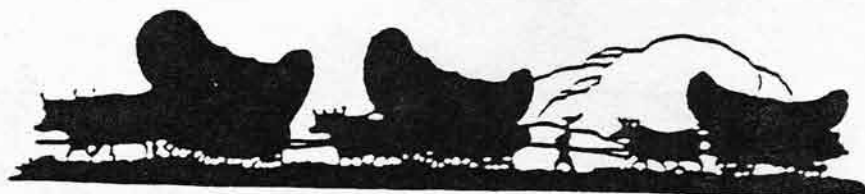
Amanda Raetzman  
Susan Colby

---

Cover: A.J. Rustad's Saloon, Moorhead, ca: 1905. In order to get as close to dry North Dakota as possible, Rustad built his saloon on piers to make use of the steep river bank at the Main Ave. Bridge.

"Welcome to Beerhead: Moorhead's Saloon Era, 1890-1915," is the title of a new slideshow presentation CCHS Archivist Mark Peihl will present at the Annual Meeting/Banquet on Thursday, Apr. 5. Don't miss it. Plan to attend now. See reservation information on Page 15 of this newsletter.

---



## Presidential Report:

This message will be my last article for the Newsletter as a board member and officer of Clay County Historical Society. My term on the Board of Directors will be complete on April 5, 1990, at the conclusion of the annual meeting.

In this note to the membership of the Society, I would like to briefly reflect on the purpose and reason for the Society. Our mission simply stated is to: "collect, preserve, interpret and disseminate the history of Clay County and the area." In order for this to happen we need an organized, competent, consistent and efficient organization. I can tell you, without reservation, that the Staff and the Board of Directors of this Society are committed to carrying out those goals and objectives. I am confident that the continuing Board Members and incoming members, and their selected officers, will continue these objectives and policies in the years ahead. This confidence makes the completion of my term on the board especially enjoyable and I look forward to continuing my service to the Society as a active and supportive member of the Society.

Once a year the Clay County Historical Society offers an opportunity for its members to meet, elect directors and transact business that may come before the society. We have an exceptional program planned for this year's

annual meeting and I hope you will take advantage of this opportunity to join us for the meeting and banquet.

It is my pleasure to introduce the newest member of our staff, Margaret Ristvedt. Margaret joined us on a temporary basis in mid-January to help out when we had an unexpected opening in the office manager position and officially joined the permanent staff on March 1 as Office Manager/Secretary. Please stop in and introduce yourself to Margaret when you are at the Center. She is looking forward to meeting each of you personally.

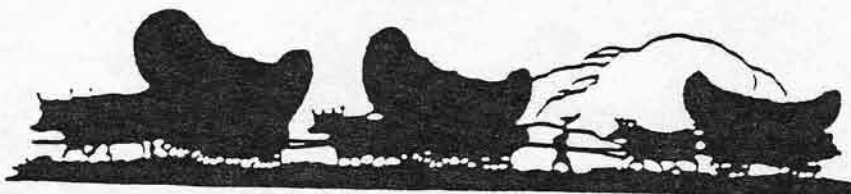
I have been extremely fortunate to have had the opportunity to serve on a Board that has been cooperative and supportive throughout my term. Difficult decisions have been easier to implement because the Board could agree on a course of action without unnecessary delay.

Finally, my compliments to the staff for their dedicated and professional service to the Society. You are a credit to this organization and your community

In closing, I would like to thank you the members of CCHS for your continued interest in and support. The future of Clay County Historical Society is with in your hands.

Best wishes

*Vern Pedersen*



## Science Decathlon set for Center

A Science Decathlon is happening at the Hjemkomst Center this spring with the "Science of Sports,"

January 13 - April 25! In addition to the exhibits, the Center will host a SPORTS & SCIENCE CAREER SYMPOSIUM to encourage young people to explore the diverse career options available to them related to athletics and science!

Representatives from Dakota Medical Sports Medicine, Red River Valley Sports Medicine Institute, Sports Medicine MeritCare and the Center have been busy planning this special event. The Sports and Science Career Symposium is scheduled for March 23 and 24, 9 a.m. to 5 p.m. and March 25, 12 noon to 5 p.m.

A power packed Friday and weekend are planned with displays and demonstrations from a variety of athletic and science related professions - from dietetics to sports psychology to sports dentistry to athletic training - as well as from post-secondary training programs. On Friday there are presentations scheduled every half hour by area professionals.

In the "Science of Sports" exhibit, students will be exposed to scientific principles as they relate to athletics. The exhibit creates the illusion of a stadium with bright lights, music and astro turf, and is enhanced by a dugout, locker room, gymnasium, training room, and arena. Within these six sports

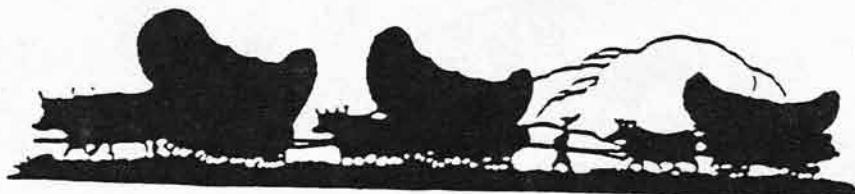
atmospheres are plenty of hands-on activities. For example, visitors can register their G-force by jumping on a platform, or, by removing pressure from a button at a given signal, register their reaction time. One can bend a break-away basketball rim, test one's breath control, try to snare a baseball, and spin in the "human gyro." Special 10-minute demonstrations like "The Science Ball Game" and "Major League Physics" are given by the "referee" demonstrators to enhance the visitors experience of the exhibit.

The Center is encouraging schools to bus students in for the Friday special programs and exhibit. Group rates are available at \$1 per student with teachers and chaperons (one per 10) admitted free. Admission includes all the Center's exhibits and the special programs of the weekend.

Schools and groups are being asked to register by March 16, 1990. Reservations may be made Monday - Thursday, 9 a.m. to 1:30 p.m., by calling Laverne Czichotzki.

The Hjemkomst Center is excited to offer this exciting program for our visitors and area students! If you have any questions or want further information concerning the SPORTS & SCIENCE CAREER SYMPOSIUM, please do not hesitate to contact Claudia Pratt, Program Coordinator, at (218) 233-5604.





## Announcing a new arrival at CCHS

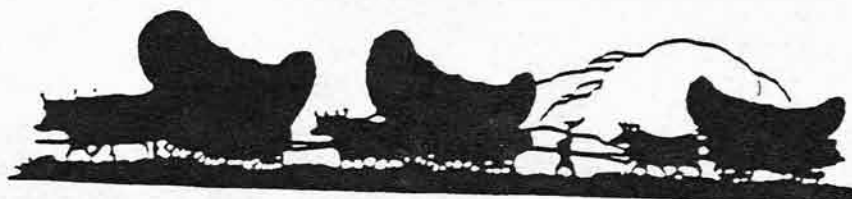
The Clay County Historical Society would like to announce the arrival of a new display named "Oh, What a Beautiful Baby!" Our display arrived on Feb. 23, 1990, at the CCHS wall gallery and can be viewed during regular visiting hours until July 23, 1990.

Every parent feels their baby is worthy of admiration and Clay County is no exception. Twenty-three photos and 12 artifacts have been selected in honor of infants and toddlers from the early 1840s to the late 1920s. You will see babies bundled against the cold, dressed in finery and wearing more casual attire. We have happy babies, solemn babies, coy babies and bewildered babies. We have babies with siblings, families and mothers.

The oldest artifacts are pre-settlement: a toddler's dress from Iowa (early 1840s), a crocheted infant cap from Germany (1857) and a pair of leather shoes from Illinois (mid-1860s). Other artifacts include a wicker baby carriage from Glyndon with a crocheted parasol cover from Moland Township, a silver cup from Moorhead, a highchair from Rollag and infant dresses from Becker and Pennington Counties.



OUR BABIES will remain quiet during viewing and need no changing! Come see our beautiful babies!



## "What the heck is that?"

OK, You're driving east on I-94 heading toward Fergus Falls and the Twin Cities. You pass Barnesville and the road curves around to the south. Just past the Highway 34 exit, you look over to your left. Sitting all by itself in the middle of a pasture you see a gray, weathered old building. It doesn't look like a farm building. It has a false front like a store or other business. "I wonder what that place is?" you may ask, then shrug and cruise on down the highway.

Like many places in Clay County that we pass all the time, this building intrigued us. We did some digging and found that it may be one of Barnesville's oldest buildings.

The early history of the structure is sketchy. Phil Kieselbach of Barnesville currently owns the building. According to stories told by his late mother Anna, the building was constructed between 1877 and 1879 and served as a cafe and bunkhouse for workmen on the St. Paul & Pacific Railroad. In 1877 this line was completed from Breckenridge through what became Barnesville and north through Glyndon.

In 1879 the St. Paul, Minneapolis and Manitoba Railroad extended their line northwest from Fergus Falls. A fledgling community moved to the new line and present day Barnesville was established. The building sat somewhere on Front Street and was used as a funeral parlor and furniture store.

In 1887, Dr. Joseph P. Vicker moved the building to a lot on the east side of Front Street, just north of

the present T. Gunness Building. There he kept his office and drug store.

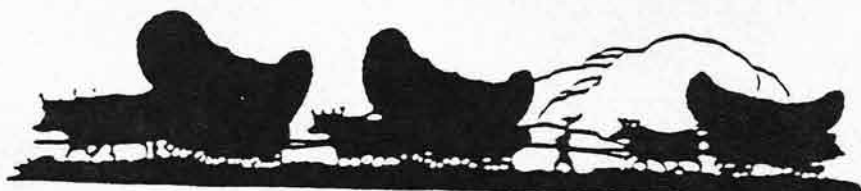
In the 1890s Dr. Vicker moved the building again to 202 3rd St. SE, just east of St. James Church. After Dr. Vicker's death in 1914, Ole Wiprud bought the property.

In 1923, Dr. Charles H. Patterson acquired the land intending to level the building and build a new house. Felix Kieselbach, knowing the historic significance of the structure, acquired the building and moved it to its present location.

Felix's grandson Phil remembers that it had a beautiful hardwood floor that was later removed. Lately it has been used as a granary.

If anyone has an additional information about the building, please contact Mark Peihl, Archivist, at CCHS 233-4604.





## OUTREACH DISPLAYS

Hawley Library and Hitterdal Senior Center	Mar. 5 - May 7, 1990
Moorhead Library & Glyndon Community Center	Mar. 7 - May 2, 1990
Viking Manor & Ulen-Hitterdal High School	Mar. 12 - May 9, 1990

We will be SPINNING A YARN at the Hawley Public Library. No, we aren't telling stories, we are illustrating some of the steps in processing wool and flax from fiber to finished product. Artifacts include a flax hatchel from Ireland, and a band loom and wall hanging from Norway.

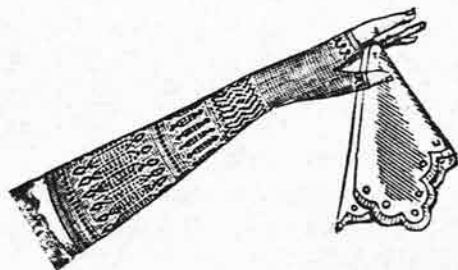
The Hitterdal Senior Center will display a variety of artifacts from CLUBS AND ORGANIZATIONS. Items represent: Modern Woodsmen of America, Odd Fellows, Shirley Temple Fan Club, Nordmanns - Forbundet and Campfire Girls.

PHOTOS BY HAYNES will be at the Glyndon Community Center. F. Jay Haynes was the official photographer for the Northern Pacific Railroad. These photos of Glyndon, taken in the 1870s and 1880s, helped to advertize land owned by the railroad.

COFFEE'S ON at the Moorhead Public Library - on display that is! We will have a look at one of Clay County's most important liquids: coffee. Artifacts include a coffee mill, coffee pot and server, cups and cream siphon. Cream or sugar, anyone?

Viking Manor will have a display of 12 artifacts for a WHAT IS IT? case. There are metal items (tall and short), four rings (plastic), two wooden objects (one has a marble in it) and two scissors (are they?) Answers will be provided.

Ulen-Hitterdal High School will also have a display of artifacts from CLUBS AND ORGANIZATIONS. Items represent: FFA, 4-H, VFW, WMSTR, and Red Cross.



## Handkerchief Flirtation

(From a trade card collected by B.F. Mackall during a visit to the 1876 Centennial Exposition in Philadelphia)

Folding it - I wish to speak with you.  
Drawing across the forehead - We are watched.  
Letting it rest on the right cheek - Yes.  
Letting it rest on the left cheek - No.  
Drawing across the eyes - I am sorry.  
Winding around the fore-finger - I am engaged.  
Putting it in the pocket - No more at present.



# Hardanger to be featured a

Archie Tiegen of Brainerd will be performing on his Hardanger violin at the Clay County Historical Society's annual meeting on Thursday, Apr. 5, at the Heritage-Hjemkomst Interpretive Center. Tiegen, who is president of the Minnesota State Fiddlers Association and a regular performer at Western Steam Thresher Reunion, has been playing the Hardanger for 15 years. His instrument comes from Telemark, Norway, where it was built by Gunliek Innelgen. "It is one of the finest Hardangers ever made" said Tiegen in a telephone interview recently.

Tiegen received his Hardanger fiddle in 1975. It was brought from Norway by his good friend Anund Roheim of Black Eagle, Mont. Roheim goes back to Telemark almost every year, according to Tiegen, and in his younger years was Norway's top fiddler. He has won many top prizes in both Norway and the U.S.A. That puts him in good company because Tiegen has also won many prizes. Last April Tiegen won his 83rd contest with about a third of them first place wins. "Lately I've been judging contests, so I may not compete for a while," said Tiegen.

Tiegen began on the violin when he was just 10 years old and played his first tune at a farm house dance at the age of 12. "I have sort of kept at it since, and after I retired

from construction work in 1973 I have been kept quite busy playing contests and concerts," said Tiegen.



Tiegen will wear his traditional Norwegian costume called a 'Bunad,' for the April 5 appearance and will perform several songs which originated in Norway. The music was taught him by his Norwegian friend, a master of the instrument according to Tiegen.

The first Hardanger violin was made in Hardanger, Norway, where it got its name, in 1651. It is an unusual instrument in that it has an extra set of strings underneath the regular ones which adds resonance and tone quality to its music. According to area authorities there is a special music for use on the Hardanger violin which is called Hardanger music.



# t banquet

CCHS owns a Hardanger violin which was made in Norway sometime between 1832 and 1836 by a grandfather of Gunnar Helland. Gunnar carried on the family profession here in this country when he began a violin making and string instrument repair business in Fargo in 1929. He was a third generation violin maker of the Helland family. The CCHS Hardanger instrument was donated to the museum by the Knute Severson family of Ulen. The museum's Hardanger will be on display at the annual meeting/banquet on April 5.

## Commission Appointment

CCHS Collections' Manager, Pam Burkhardt, has recently been appointed to the 15 member Heritage Education Commission (HEC) which is dedicated to educating the community to preserve their heritage. Toward this goal, they present preservation workshops, tape oral histories and hold an annual family history workshop. Members are appointed by Pres. Roland Dille of Moorhead State University, the commission's support organization. HEC is centered in Moorhead, and covers all area counties.

Burkhardt is a graduate of North Dakota State University with a degree in English Education. She is currently working toward graduate degrees in education and English. She has taught at the fifth grade through college level and has been with the CCHS since 1984.

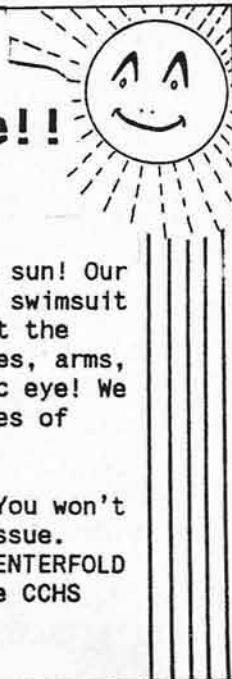
Coming In May ----

## Swimsuit Issue!!



Just in time for the summer sun! Our next newsletter will be our swimsuit edition with a close look at the costume which revealed ankles, arms, legs and backs to the public eye! We will cover (uncover?) decades of fabrics and styles.

Renew your membership NOW! You won't want to miss this special issue. Watch for the spectacular CENTERFOLD in the May-June Issue of the CCHS Newsletter.



Moorhead Daily News: Jan. 1898

## THE MIDWAY

JOHN HAAS, Prop.



Palatial, Richly Decorated and Furnished. Brilliantly Illuminated with 400 Electric Lamps.

## SALOON AND RESTAURANT

Imported and Domestic Wines, Liquors and Cigars of all kinds.

THE FINEST  
IN THE  
NORTHWEST

Agent for **Pabst Beer.**

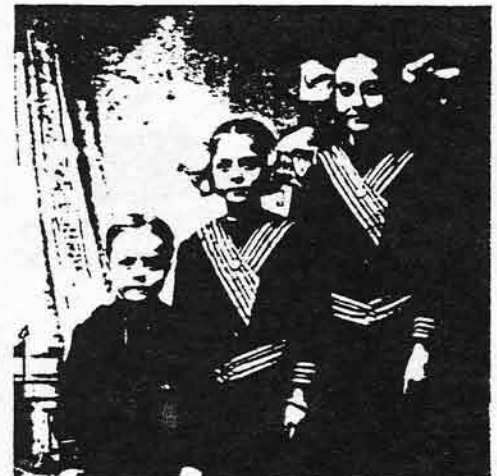
Nick Markov,  
Manager of Cafe.

North Bridge,  
Moorhead, Minn.

# HEIRLOOM TEXTILES

# FAMILY PHOTOS

*Preserving  
Your...*



1:30 – 3:00pm

Whether its your great-grandmother's wedding dress, your grandmother's quilt, a sampler, a doily or any of the textiles you have inherited or purchased, let us help you preserve them. This workshop includes repair, cleaning, display & storage of heirloom textiles and needlework. All procedures will be tailored for home use. Bring an article from home for question and answer time. Handouts for care and storage provided.

Pam Burkhardt, Collections Mgr.

3:30 – 5:00pm

Preserve your family photos for future generations to enjoy. Now is your chance to bring those old photographs up from the basement. This workshop will include storage and display ideas for old and new photographs. Special topics include color photos, slides, wedding photos, movies and videos. Handouts provided.

Mark Peihl, Archivist

SPONSORED BY

CLAY COUNTY HISTORICAL SOCIETY

SATURDAY – MAY 19, 1990

1:30 – 5:00pm

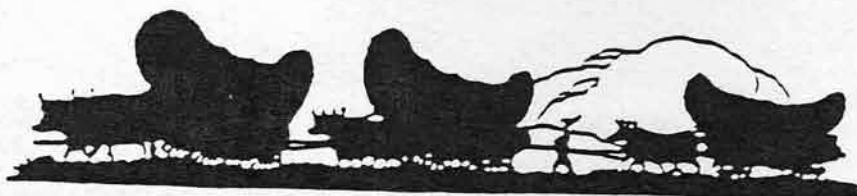
HERITAGE-HJEMKOMST INTERPRETIVE CENTER  
202 First Avenue North, Moorhead, Minnesota

Workshops open to the public.  
No pre-registration necessary.

For more information call: 218-233-4604

CCHS March Newsletter  
Page 10

*In Honor Of  
Minnesota  
Museums'  
Week  
May 13-19, 1990*



## Dilworth puts ban on naughty dances

Article taken from the  
November 26, 1914  
Barnesville Record Review

The village council of Dilworth, at its regular meeting last Thursday evening passed an ordinance regulating public dances which aims to prevent anything of an unseemly nature in dances at that village. The ordinance prohibits the holding of public dances on Saturday nights,

and provides that all such dances on other nights must close not later than 2 a.m. It also expressly prohibits the dancing of any "Immodest, suggestive or immoral dances" and places the ban on the grizzly bear, bunny hug, turkey trot, chicken flip and moonlight dance. A fine of not exceeding \$10 is fixed as the penalty for violation of the ordinance.

## Ellingson to speak at annual banquet.

James Ellingson, 4th grade teacher at Probstfield Elementary School and 1989 Minnesota Teacher of the Year, will be the guest speaker at the CCHS Annual Meeting/Banquet on Thursday, April 5.

Ellingson's topic will be: "Hands on Experience for Kids: A Historical Perspective." Ellingson believes there is a lot of value in an experience-based education. He believes in getting children involved and feels a teacher's role is to engage students in projects which will be meaningful to them.

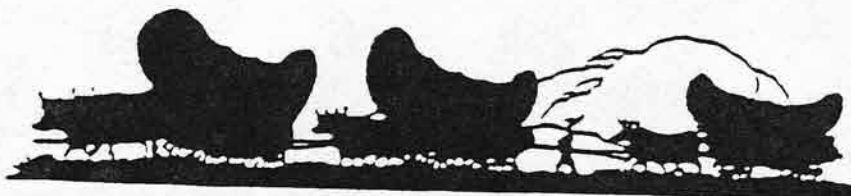
Ellingson will relate his own experiences from a historical perspective. Items included in Ellingson's talk will be his experiences with the Probstfield

family and CCHS's one room schoolhouse project at Rollag. Ellingson has also had experience with the Comstock House and the Prairie Home Cemetery and part of his talk will deal with the cemetery as a social document.

In 1986 Ellingson was one of five teachers who worked with the historical society to put together three educational trunks for use in the Clay County school system. Ellingson's trunk project was "The Good Old Days," which will be on display at the annual meeting. Ellingson's teaching philosophy is to give children high expectations. He will try to give CCHS members at the annual meeting/banquet a feel for what it is like to be a teacher.





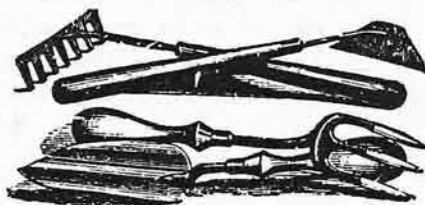


## Spring 1990 - Schedule of Events:

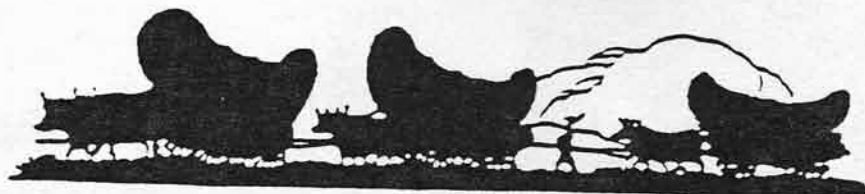
Mar. 08-09	10th Annual Meeting of Minnesota Historical Organizations
Mar. 15	7:30 p.m. "Doc Humphrey Films" - presentation by CCHS Archivist, Mark Peihl
Mar. 23-25	Sports & Science Career Symposium Fair - special displays by diverse career groups associated w/sports and science field. Special presentations by exhibitors on Friday 9-5. Displays to continue through the weekend.
Mar. 29-Apr. 1	SunMart \$5 Family Days
Apr. 15	Center closed for Easter
Apr. 19	7:30 p.m. "Old Ruby" presentation by CCHS Archivist, Mark Peihl
Apr. 22-28	National Volunteer Week.
Apr. 24	Volunteer Recognition Banquet (Tentative Date)
Apr. 25	Last day of "Science of Sports" exhibit
May 12	"Superman" & Trygve Olson's Editorial Cartoons. Phase I of "Comics, Comics" opens in Heritage Hall
May 13-19	Minnesota Museum week
May 17	7:30 p.m. "Stockwood Fill" presentation by CCHS Archivist, Mark Peihl
May 18	International Museum Day
May 19	CCHS Preservation Workshop - 1:30-3 p.m. Preserving Your Heirloom Textiles, 3:30-5 p.m. - Preserving Your Family Photographs
Jun. 03	Last day of "Fun in the Sun" Clay County Museum
Jun. 06	"What's So Funny" Phase II of "Comics, Comics" opens in Heritage Hall
Jun. 07-10	Riverfront Festival
Jun. 09	"Til the Cows Come Home", an exhibit on the county fair opens - Clay County Museum

Programs subject to change. Call (218) 233-5604 for current information.

### GARDEN TOOLS.



Garden Tools courtesy of  
"Bloomingdale's Illustrated  
1886 Catalog"  
Fashions, Dry Goods  
and Housewares.



## Minnesota Historical organization annual meeting held in Moorhead

The Minnesota Historical Organization held its annual meeting in Moorhead last Thursday and Friday, March 8 and 9.

Members of the Clay County Historical Society and the general public were invited to attend. The annual meeting consisted of a tour, reception and presentation at the Heritage-Hjemkomst Interpretive Center on Thursday and a conference at the Day's Inn, Moorhead, on Friday.

The Thursday afternoon tour was led by Mark Peihl, CCHS archivist. Historic sites included in the tour were the Federal Post Office and Courthouse (now the Plains Art Museum), St. John the Divine Episcopal Church which was designed by Cass Gilbert, the Bergquist House, and the Comstock House. A Thursday evening reception at the Heritage Center was well attended and ended with a video presentation and discussion on statewide preservation planning.

Friday's conference was held at the Day's Inn, Moorhead. Session topics included "Board and Staff Relations," "Coping with Stress in the Museum," "Issues in Ethnic History, Part I and II," and "Preservation of Local

Historic Properties." David Nystuen, field director of the Minnesota State Historical Society, gave the luncheon address, "Minnesota's History Family."

### Jan./Feb. Donors

#### MOORHEAD:

Everett Lecy, Ruth Utke, Lake Agassiz Regional Library

#### GEORGETOWN:

Terry Sebestl

#### BARNESVILLE:

Gary Stuhr

#### HAWLEY:

Joe Barta and the Barta Family

#### ROLLAG:

Norman Bjorndahl

#### FOREST LAKE:

Ernest A. Robinson

#### ROSEMOUNT:

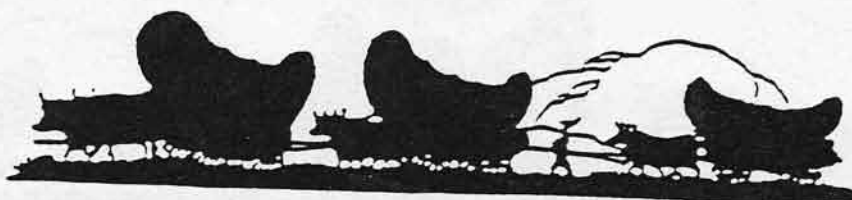
Minnesota FFA

#### FARGO, ND:

WDAY-TV

### Jan./Feb. Artifacts

A circular saw used for cutting wood in Elkton Township; a cotton dress from c. 1915; letters written from a POW camp in Germany in 1944 to a family in Hawley; a history of the FFA in Minnesota; photos, scrapbooks, music and drawings concerning the Stein family of Georgetown; photo of the Rollag baseball team of 1914; centennial flags from the 1972 "Century Together" celebration; "City Offices - City Clerk" sign; letterbook from the Fountain-Sill farm; a Moorhead Clay County index; and a video tape of all of the Centennial reports produced by WDAY-TV in 1989. CCHS provided information and photographs for several of these reports.



## Volunteer week set for April 22 - 28

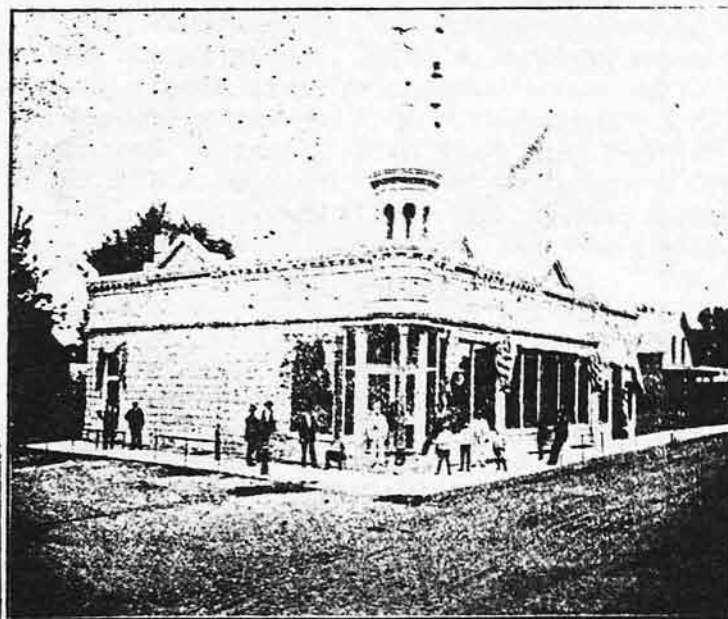
In the month of April we will be recognizing our Volunteers during National Volunteer Week, April 22 - 28. The Heritage-Hjemkomst Interpretive Center is in the process of setting up a recognition event for all the Volunteers at the Center. As details are confirmed more information will be sent out to everyone.

In the year 1989, over 8,000 Volunteer Hours were documented here at the Center. There are 60 to 80 active volunteers at the Center and

their various duties require a wide range of skills. We have a great group of professional volunteers and we thank each and every one of them.

If anyone is interested in volunteering at the HHIC, I have a few positions open both during the week and on the weekend. Please call 233-5604, Monday through Thursday from 8:30 a.m. to 1:30 p.m. for details and schedules.

(Submitted by: LaVerne Czichotzki, HHIC Volunteer Coordinator)



# Thos. Erdel,

DEALER IN IMPORTED AND DOMESTIC

## Wines, Liquors and Cigars

Hamm's Excelsior Beer on Draught.

Near North Bridge.

MOORHEAD, MINN

Moorhead Daily News: Apr. 1898



*At The  
Heritage  
Shop!*

- \* Fargo-Moorhead Tee Shirts
- \* Area Artisan Works
- \* Museum Cards
- \* Heritage Books
- \* Items from  
Science of Sports Exhibit

Hjemkomst Center (218) 233-5604  
Visa and Mastercard accepted



1990 ANNUAL MEETING BANQUET  
OF  
CLAY COUNTY HISTORICAL SOCIETY  
AT  
HERITAGE-HJEMKOMST  
INTERPRETIVE CENTER  
MOORHEAD, MINNESOTA

April 5, 1990

5:30 Social Hour

6:30 Banquet

7:30 Meeting

Guest Speaker: Jim Ellingson  
1989 Minnesota Teacher of the Year  
Topic: "Hands on Experience for Kids:  
A Historical Perspective

Entertainment: Archie Tiegen  
President of Minnesota  
State Fiddlers Association  
Performing on the Hardanger Violin

Presentation: Mark Peihl, CCHS Archivist  
Slide Show: "Welcome to Beerhead"  
The story of Moorhead's infamous saloon  
industry from 1890 to 1915.



Knut Severson played this  
Hardanger violin on April  
24, 1920. The instrument,  
which dates from 1832-  
1836, is part of the CCHS  
collection and will be on  
display at the April 5  
annual meeting.

Return Coupon to:  
Clay County Historical Society  
Box 501  
Moorhead, Minnesota 56560

1990 ANNUAL MEETING BANQUET  
CLAY COUNTY HISTORICAL SOCIETY  
Thursday, April 5, 1990  
5:30 p.m. Social Hour  
6:30 p.m. Banquet  
7:30 p.m. Program/Meeting  
HERITAGE-HJEMKOMST INTERPRETIVE CENTER  
Moorhead, MN  
\$6.50 per person  
Make Check payable to:  
CLAY COUNTY HISTORICAL SOCIETY  
Name: \_\_\_\_\_  
Please check your choice of  
Entree:  
— Chicken Cordon Blue  
— Roast Beef  
(Reservation deadline: March 29, 1990)

1990 ANNUAL MEETING BANQUET  
CLAY COUNTY HISTORICAL SOCIETY  
Thursday, April 5, 1990  
5:30 p.m. Social Hour  
6:30 p.m. Banquet  
7:30 p.m. Program/Meeting  
HERITAGE-HJEMKOMST INTERPRETIVE CENTER  
Moorhead, MN  
\$6.50 per person  
Make Check payable to:  
CLAY COUNTY HISTORICAL SOCIETY  
Name: \_\_\_\_\_  
Please check your choice of  
Entree:  
— Chicken Cordon Blue  
— Roast Beef  
(Reservation deadline: March 29, 1990)

## CCHS - 1990 Membership Information

### CCHS Membership

I would like to begin/renew my membership in the Clay County Historical Society. Please enter my membership in the category I have checked below:

- ( ) INDIVIDUAL \$15.00  
( ) FAMILY \$35.00

### CCHS Membership Benefits

- \*\* FREE Admission to the Center
- \*\* Bi-monthly newsletter
- \*\* 25% discount on photo reproductions
- \*\* 10% discount on acid-free materials
- \*\* voting privileges
- \*\* invitation to the annual meeting/dinner and all CCHS events

Name: \_\_\_\_\_

ADDRESS: \_\_\_\_\_

Telephone: \_\_\_\_\_

Date Purchased: \_\_\_\_\_

Please list additional family members (family is considered; husband, wife and children now living at home, under the age of 18) for passes.

RETURN TO: Clay County Historical Society  
P.O. Box 501  
Moorhead, MN 56560  
(218) 233-4604

Amount Enclosed: \$ \_\_\_\_\_

Non Profit Org.  
BULK RATE  
U.S. POSTAGE  
PAID  
PERMIT NO. 494  
MOORHEAD, MN