

CLAY COUNTY HISTORICAL SOCIETY

Newsletter

July/August 1990

Vol XIII No. 4

MANY PRESENT TO DEDICATE ARMORY

LARGE GROUP BRAVES WEATHER TO ATTEND CORNERSTONE LAYING TUESDAY.

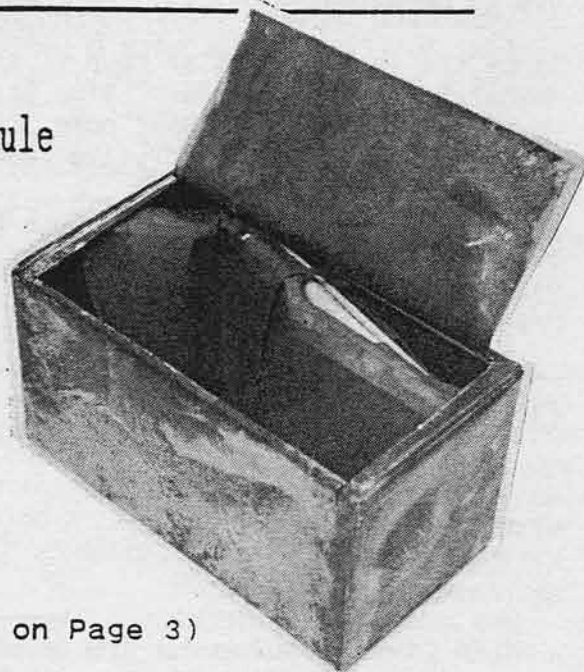
Dedicated to community as well as military service, the new \$73,000 Moorhead armory's cornerstone was laid Tuesday with members of Company F, high officials of the Minnesota national guard, civic leaders and citizens taking part in the ceremony.

The ceremony was curtailed somewhat by inclement weather, but a large group braved the wet walks and mud to look on. The dedication opened with the sounding of "attention" by Bugler Sandie DeBrito, and a copper box, containing historical records of Company F and the regimental insignia, was inserted in the cornerstone. Adjutant General E. A. Walsh, commanding officers of the Minnesota national guard, other officers and Chamber of Commerce leaders each spread the mortar with a trowel and workers but the stone in place. General Walsh, in a brief talk, presented the building to the city on behalf of the state, congratulating the Chamber of Commerce and Captain Alex J. Nemzek, commander of Company F, in the culmination of their efforts.

Among those who participated in the program were: Max Goldberg, president, and A. T. Brandt, secretary, of the Chamber of Commerce; C. P. Brown, chairman of the Chamber's armory committee; H. J. Harris and John T. Lamb, directors; Jacob Klefer, Jr., representing the Naval reserve; Major P. C. Bettenberg, National guard architect; Colonel F. G. Stutz, commanding the 206th infantry; Lieutenant Colonel John W. Carter, commanding the 205th infantry, and Captain Paul Schlick, adjutant to Colonel Stutz.

(Moorhead Daily News-Tuesday, Nov. 21, 1934)

This 1934 time capsule
held artifacts
from the
Moorhead National
Guard Armory (Story on Page 3)



(Moorhead Daily News-Tuesday, Nov. 20, 1934)

Guard Officers Arrive For Armory Dedication

Adjt. Gen. E. A. Walsh Heads Delegation To Participate In Ceremony At 3 P. M. Today; Visitors Guests At Rotary Club Luncheon.

Five officers of the Minnesota National Guard, headed by Adjutant General E. A. Walsh, had arrived in Moorhead at noon today to participate this afternoon in dedication of the city's new armory.

The cornerstone of the \$73,000 building was to be laid at 3:30 p. m. with the state officials, local civic leaders and Company F, Moorhead national guard unit, commanded by Captain Alex J. Nemzek, Jr., taking part.

The visiting officers, in addition to the adjutant general, are: Colonel F. G. Stutz, St. Paul, commanding the 206th infantry, of

which Company F is a unit; Lieutenant-Colonel John W. Carter, commanding the 205th infantry; Major P. C. Bettenberg, St. Paul, state architect, who designed the Moorhead building, and Captain Paul Schlick, St. Paul, adjutant to Colonel Stutz.

The officers were guests of the Moorhead Rotary club at luncheon in the Comstock hotel, where Adjutant General Walsh spoke. He declared the Moorhead armory was designed not only for its military value, but to serve the community as well. The national guard, he

(Continued on page 6)

President's Message:

Dear Members,

Hasn't the summer been great?! Recently, I attended Moorhead State's Old Fashioned 4th of July celebration. It was a beautiful day filled with memories, history and fun! Mark and Pam were part of the festivities opening the time capsule from the recently demolished Moorhead Armory. Our Clay County Historical Society takes an important role in many county events and that is largely due to our great staff!!

Since the last newsletter much of the board members' and staff members' time has revolved around our present home, the Heritage-Hjemkomst Interpretive Center.

The City of Moorhead became owners of the building in an effort to assist the Hjemkomst Center in enhancing its programming. The sale of the building left

in question the home of Clay County Historical Society/Museum. Many of you probably heard the proposed relocation of Plains Art Museum to HHIC but that does not seem to be an option at this time. What does seem to be the viable option at this time is that CCHS would remain in its current location but most probably occupy a little less space. HHIC is looking to find an additional tenant or two to help offset operation expenses as well as to enhance programming.

Meetings with all involved parties are being held to discuss the future. The common theme, I am hopeful, will become one of enhanced cooperation which will result in better programs and services for our membership.

Enjoy the rest of summer!

Nancy Tedros, CCHS Board President

Outreach Displays

Glyndon Community Center
Hawley Public Library
Hitterdal Senior Center
Viking Manor
Moorhead Public Library

July 5 - Sept. 5, 1990
July 11 - Sept. 10, 1990
July 11 - Sept. 10, 1990
July 13 - Sept. 12, 1990
June 13 - Sept. 5, 1990

WHAT IS IT? will appear at the Glyndon Community Center. These bits and pieces from an earlier time are not longer familiar items. Many will remember most of these things and can tell a younger generation a thing or two about them. Oh, yes. There is one item we haven't identified yet!!


Keep in tune with the Hawley Public Library's display entitled LET'S MAKE MUSIC. Featured will be an accordion, harmonica, drum, cymbals, auto harp and sheet music.

JUST A WHITTLE BIT of wood carving will appear at the Hitterdal Senior Center this

summer. The display will include humorous figures from one collection, a scratch-carved spoon, an action toy, a puzzle and one of Anna Syverson's pieces. Anna was from the Ulen area.

Viking Manor will feature TOOLS OF THE TRADE. Tools of the doctor, farmer, merchandiser and notary will be displayed.


JAMS AND HAMS will be reminding us in the Moorhead Public Library to prepare for the winter ahead. Canning equipment, a sausage press and hog scraper will be among the items displayed.



\$68 SUPERBA BALL BEARING COMBINATION WASHING MACHINE

Our Superba Ball Bearing Washer, our Easy Running Wonder combined with basket or tub stand and wringer is the latest and best. It saves a separate wash bench. Saves taking off and replacing the wringer. It is complete in itself and yet takes up no more room than an ordinary washing machine.

REDUCE YOUR WASHDAY TO HALF or three-quarters of an hour once a week by using the Superba Ball Bearing Washer, with the same powerful motor springs that do the work for you. The same anti-friction ball bearings which make running the washer a pleasure. It is so easy. The same patented features which wash the clothes with such quickness and to snowy whiteness. All the features which have made our Superba Ball Bearing Washer the biggest selling and most popular washing machine ever put on the market. In addition to this, our Superba Combination Washer is equipped with a folding hardwood bench braced with steel braces making it perfectly rigid and strong. It furnishes a convenient stand for the clothes basket or rinsing tub, and a strong and solid support for the wringer. The stand is made of selected materials. It is very substantial in construction, thoroughly braced and handsomely finished. This Combination Washing Machine is shipped from the factory in Southern Michigan.



2K7515 Superba Combination Washing Machine. Shipping weight, 105 pounds. Price.....
\$7.68

Treasures from the past.....

A bit of local history came to light (literally) on July 4 as CCHS Collections' Manager Pam Burkhardt and Archivist Mark Peihl opened a time capsule that had been sealed for 55 years in the cornerstone of the old Moorhead Armory. Workmen discovered the small copper box while demolishing the armory last month. Pam and Mark opened the capsule at Moorhead State University's Old Fashioned Fourth of July Celebration.

The National Guard Armory was built on the corner of 4th Street and 3rd Avenue South as a federal depression relief project in 1934 after a rainstorm in 1932 had flooded the basement of the original armory dramatically pointing out the need for a new one. (The original armory is now Francis Peterson's auto showroom on Center Avenue.)

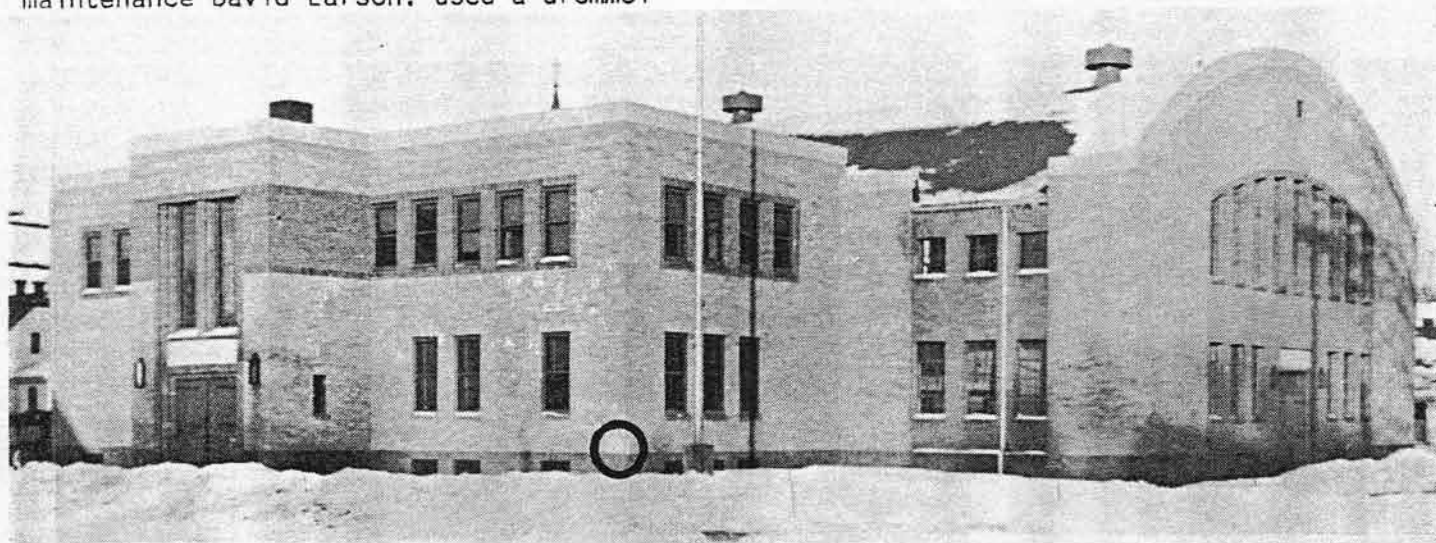
On Tuesday, November 20, 1934, commanders of the State National Guard, local dignitaries and Moorhead's Company F turned out to dedicate the armory. At 3:30, bugler Sandie DeBrito sounded "Attention," the time capsule was inserted into a cavity in the cornerstone and workmen lowered the stone into place. There it remained until last month.

On June 14 the National Guard contacted CCHS about opening the box. Pam and Mark volunteered their expertise in case the contents required special conservation. They brought the capsule to the museum for safe keeping. On July 3, HHIC head of maintenance-David Larson, used a dremmel

tool to carefully make the initial cuts, leaving just enough copper intact to keep the top closed.

At 2:30 p.m. July 4, in the lobby of the Livingston Lord Library at Moorhead State University, with television cameras rolling, Mark made the final strokes with a hacksaw that opened the box. One hundred fifty spectators craned their necks as Mark bent the top back revealing the contents. Inside were a thick, letter size manilla envelope, a pin backed medallion emblazoned with the crest of Company F and a brand new, shiny 1934 Liberty Head dime. Pam gingerly removed the materials and gently laid out the papers from the envelope. Although dry and stained by rust from a paper clip, the documents were in very good condition. They included copies of the petitions requesting the establishment of the Moorhead National Guard unit, the unit's first quarterly payroll roster from 1919, handwritten order for the guardsmen to patrol Fergus Falls after the disastrous 1919 tornado and some newspaper clippings. Close inspection back at the museum revealed a 1934 penny hidden in the folds of the envelope.

The box and its contents belong to the city. The city council may donate the materials to CCHS or to the National Guard. Presently the capsule and its contents are on display in the Clay County Museum. The display will remain up throughout July.



MOORHEAD NATIONAL GUARD ARMORY - 1934. The time capsule was inserted in the cornerstone indicated by the circle above.

A Ship Was Born....

Ten years ago a Viking ship was pulled out into the Minnesota sunlight for the first time. On July 27, 1980, the ship was christened "Hjemkomst" in Hawley's Central Park and by August, had taken her maiden voyage on Lake Superior.

In honor of the Hjemkomst's 10th birthday, the HHIC is hosting several events. An exhibit "A Ship Was Born" is now open in Hjemkomst Hall. It includes articles printed in the Hawley Herald, model ships made by Mr. Grothe's 5th grade class at Hawley Elementary, and sculptural studies made of the dragon's head by South High art instructor Roger Goetch.

By July 17 the Hjemkomst will be decorated with flags and her shields. From July 26-29 the Center will sponsor \$5 Family Days, and from 1-5 p.m. on Sunday, July 29 - crew members will be on hand to visit and answer questions. Rose Asp will autograph her book "Hjemkomst, A Homecoming Odyssey," from 1-5 on Sunday.

Join us to celebrate the Hjemkomst!!!

Schedule of Events for HHIC

- July 17 - Celebration of the 10 year anniversary of the Viking ship being pulled out of a potato warehouse in Hawley
- July 22 - Last day of "Oh, What a Beautiful Baby" and "Moorhead Ice Company"
- July 27 - Family Days at HHIC to celebrate the christening of the Viking ship "Hjemkomst" 10 years ago.
- July 28 - "The Point" opens in Clay County Museum
- August 6- Commemoration of the Hjemkomst's maiden voyage on Lake Superior 10 years ago.
- August 12- Last Day of "Comics, Comics" exhibit in Heritage Hall
- Sept. 1 - "Where Great Lakes Meet Plains" opens in Heritage Hall.
- Through Oct. 14 - "Till the Cows Come Home" an exhibit in Clay County Museum

WOMAN SMOKER

*WOMAN SMOKING A CIGARETTE
SEEN WALKING DOWN
FRONT STREET*

(From Thursday's Daily.)

The woman smoker has arrived in Moorhead.

A few days ago a stylishly dressed female, with a flossy bonnet set at a rakish angle, with a generous display of silken hosiery, was seen walking down Front Street. That happens quite frequently, for Moorhead owns up to some well dressed kids. But the reason for this item is not that she was well dressed, but rather the fact that she was smoking while on her public walk. There is really no difference between the smoking by either of the sexes, but this is the first time known in history that a woman has been seen smoking in the open, and making no attempt to hide it, but on the other hand flicking the ashes off her pill in a flourishing manner as if she didn't give a toot for the opinion of anybody.

Quite a sermon could be preached on this topic, and without profit to the preacher or the preachee, but The News representative freely admits that for a minute he was knocked silly by the vision of the pill smoking symphony in pink.

The woman was a stranger in the city - Glory be!

(This item was taken from the July 28, 1921 "Moorhead Weekly News.")

Fair winner announced

Clay County Historical Society had a booth at the Clay County Fair at Barnesville from June 20-24. Items on display at the fair included PAST trunks and photos from the Flaten/Wange glass plate negative collection. Brochures and picture post cards were available.

A complimentary one-year membership was the prize in a drawing which Bob Swenson of Burnsville won. Congratulations Bob!!!

"The Point" opens July 28

Clay County Historical Society will open a new exhibit "The Point" on July 28. This exhibit will look at Moorhead's original residential district - the bend in the river that is now home to the Heritage-Hjemkomst Interpretive Center (HHIC) and Viking Ship Park. "The Point" will look at who lived in the area, how the neighborhood changed over the years and why it was vacated.

From Moorhead's earliest days until the late 1960s people lived and raised families on The Point. In the 1870s, Moorhead's wealthier citizens lived in substantial houses on the high, open center of the river bend. Less affluent working people built or rented homes in the wooded flood plain nearer the river. By the late 1880s, most of the rich people had moved to more fashionable neighborhoods on the city's growing south side. Middle class and lower middle class families took their place - establishing a pattern that lasted until the area was leveled during urban renewal.

The flooding Red River eventually doomed the modest neighborhood. Frequently inundated, the Point was included in Moorhead's Urban Renewal District. In 1969,

after many years of red tape, 175 families and 120 other individuals were moved out of their homes in the area to a federally funded housing project north of the Fairmont Creamery. The houses were leveled and the 100-year-old neighborhood disappeared.

The Point lay overgrown and unused until 1986 when the Heritage-Hjemkomst Interpretive Center was built on the site. Today the city and HHIC maintain the grounds as "Viking Ship Park." Remnants of the area's residential past are still visible. It is easy to locate old Elm and 1st Streets and 3rd Avenue North by the berm trees that once lined them. Two fire hydrants stand on the grounds. While landscaping the park, workers excavated a concrete garden pond. CCHS has learned that it was built by contractor Nels Melvey in his back yard at 320 North Elm Street in the 1940s. The Lucier Bonawitz family has provided photos showing what the pond looked like when they lived in the house in the 1950s.

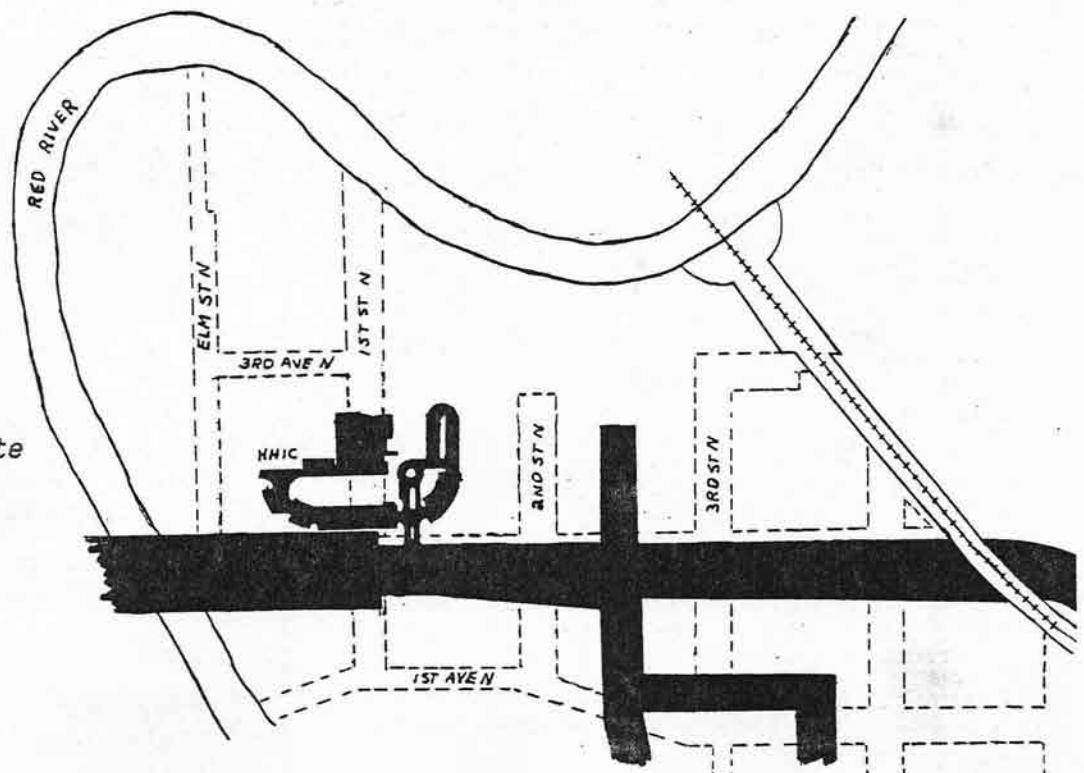
"The Point" exhibit will be up in the Clay County Museum until October.

Point

Area

Today - - - - -

(* Dotted lines indicate location of Streets and Avenues in 1950s)



Center receives Minnesota Humanities Commission grant

The Hjemkomst Center recently received a grant of \$9,875 from the Minnesota Humanities Commission (MHC) to support the Fall 1990 exhibition: "Where Great Lakes Meet Plains" - September 1, 1990 - January 20, 1991. The exhibition, which will consist of several traveling exhibits, focuses on our region's Native American cultures, issues and characters: Chippewa, Dakota and Ojibwa people of Minnesota, Sitting Bull, the buffalo, No Two Horns, Indian games and plains Indians. The pre-history of the Indian people of the Red River Valley will also be explored with information from recent archaeological digs and the present day Indian culture will be interpreted by exhibits developed in cooperation with Dr. Michael Michlovic and Dr. Donald Cole of Moorhead State University. The exhibits will be enhanced by regional ethnographic collections on loan from the private sector and from the State Historical Society of North Dakota and Minnesota Historical Society. Included will be a brain-tanned tipi set up in Heritage Hall.

The Center has been working with an exhibit advisory committee consisting of local Native Americans and university professors to help develop the exhibit and support programming. Scheduled for September 9 is a living history program which will include tipi raising demonstrations and a presentation on Indian dwellings. October 11-16 there will be a symposium "Two Cultures, One World" exploring Indian peoples challenge of integrating their past with the modern world. The Center will co-sponsor an Archaeology Day, organized by the Minnesota Institute for Archaeology, at Moorhead Center Mall on Saturday, Nov. 10. It will be preceded by a free public presentation on Red River Valley Archaeology by Dr. Michlovic on Thursday, Nov. 8. The Holiday Heritage Festival will begin with a Native American Weekend, November 23-25, with traditional arts, storytelling and dance. Featured artist will be Kevin Locke, Dakota hoop dancer, from South Dakota.

For more information contact Claudia Pratt, HHIC Program Coordinator at 233-5604.

Guard Officers Arrive For Armory Dedication

(Continued from page 1)
said, wants the public to use the armory as a community gathering place.

"When this building is completed I know it will fully serve its military purpose and I hope it will serve equally as well its community purpose," he said. He pointed out that the armory here is "the last word in armory construction," declaring that the ideas expressed in this building are the fruits of

many years experience, being designed both for military and public use.

Commenting upon the need of military organizations such as the local national guard company, the adjutant general declared "the mission of this country is clearly stated in our bill of rights. There are many varying opinions as to this military business. There are those who believe in elimination of all military organization, and those who feel that force and organization are the only methods with which we can enforce a guarantee of our bill of rights."



RIDDLE (from Mother Goose
Nursery Rhymes, copyr. 1902)

Little Nancy Etticote

Little Nancy Etticote,
In a white petticoat,
With a red nose;
The longer she stands,
The shorter she grows.

(A candle)



At The
Heritage
Shop!

Comics! Comics!
Superman!!

Featuring: "How to Draw"
series on Cartoons

- * White Earth Pottery
- * Norwegian Rosemaling 1991 Calendars
- * Area Artisans Works
- * Museum Cards
- * Heritage Books

Hjemkomst Center (218) 233-5604
Visa and Mastercard accepted

Clay County Fair featured.....

Occasionally, Clay County Historical Society receives traveling photo exhibits from the Minnesota Historical Society. They are always excellent exhibits. However, they do not deal specifically with Clay County's history. To give the displays a local focus, Mark Peihl and Pam Burkhardt, CCHS staff members, supplement the photos and text of the traveling exhibits with artifacts from the CCHS collection.

The traveling exhibit currently on display, TILL THE COWS COME HOME, concerns the history of county fairs in Minnesota. With this exhibit and our own county fair in mind, Mark and Pam decided to try something a little different. In addition

to the Clay County Fair artifacts from the collections, they actively sought entries from the 1990 Clay County Fair held at Barnesville, June 21-23. Items borrowed and on display include needlework entries from the Open Classes, the Best of Show Senior Citizen's Quilt, 4-H art entries and a complete 4-H booth created by the Tansem Tigers 4H Club. The midway was not forgotten. Both Pam and Mark tried their luck, won, and donated their prizes! (The things they do for the society!) Items on loan include ribbons and trophies won by Dwight Rindahl of rural Barnesville in the early 1960s for his 4-H dairy projects. TILL THE COWS COME HOME will be on exhibit until October 14.



This semi-aerial shot of the midway at the Clay County Fair catches the essence of Minnesota county fairs. Prominent features of the photo include cotton candy, super dogs and lots of carnival rides.

Profiles of CCHS Board Members..

MERCEDES ROOS

Mercedes Roos was first elected to the CCHS Board in March, 1985, and has seen many changes in CCHS since that time. "I helped move artifacts from the Depot in 1986," said Roos. "The new facility, a capable and dedicated staff and a knowledgeable hard working board makes the future look bright." She continued, "Money and memberships are among our chief concerns."

Roos received her BA from Concordia College with majors in music and English and later completed a fifth year at Moorhead State University in library science. Roos taught for 13 years at Lake Park High School, and has served as church organist at Hawley Lutheran and is presently organist at Eksjo Lutheran Church near Lake Park.

Roos has taught both piano and organ. She is a past dean of the Red River Chapter of the American Guild of Organists, served as a Lake Agassiz Library Board officer, and was a member of the Concordia Choir.

Roos became interested in historical societies after writing family histories and a history of her home town, Callaway, for the Becker County History Book. Family artifacts further spurred her interest in preservation and museums. Cooperative programming is of special interest to her. She serves as the CCHS representative on the HHIC board.

Roos brings an enthusiasm to CCHS (that is born of her interest in preservation, history, and programming). She has traveled extensively throughout the United States, Canada, and Europe, and visited many museums. She recently completed three years as Vice President of the Northwestern Minnesota Synodical ELCA Women's Organization and brings strong organizational skills to her CCHS board position.

She and her husband Norm, presently the Mayor of Hawley, have three sons. They are Howard, an aeronautical engineer in St. Louis, Mo.; Donald, a medical doctor in Burnsville, MN; and John, a medical doctor in Burlington, Vermont. The Roos' have six grandchildren. Mercedes and Norm are life members of CCHS.

LOREN A. HELMEKE

Loren Helmeke has been on the CCHS Board of Directors since 1987 and lists museums as one of his hobbies. Helmeke attended country school District 85 in Viding Township and graduated from Moorhead High School in 1937.

Helmeke has held many kinds of jobs including farm laborer, construction logger, farmer and rural mail carrier. He served in the military from 1942 to 1946. He has held several offices in the Minnesota Rural Letter Carrier Association of 2,000 members including treasurer and secretary.

Helmeke enjoys sports, traveling and has an interest in antiques. He is married and has two stepchildren and "numerous grandchildren and great grandchildren."

SHERWOOD PETERSON

Sherwood Peterson has served on the CCHS Board of Directors since 1987. "I have a great interest in the historical society" says Peterson. He was introduced to the historical society and asked to serve on the board by another board member.

Peterson can contribute to the CCHS Rollag District #3 school project because he attended a one-room country school for seven years. He graduated from Moorhead High school and earned his B.S. degree from NDSU in 1962. He is a self employed farmer with all his farm production in seed.

In keeping with his interest in the historical society Peterson lists old cars and antiques as his hobbies.

Peterson and his wife, Marilyn, are both graduates of NDSU. They have three sons, Sherwood Jr., a pharmacist at Rochester, and Charles and John both students at NDSU. All three sons are Eagle Scouts.

A Great Gift Idea!!

GIVE MEMORIES...

CCHS can furnish
photocopies of newspapers
for a special day -
You choose the date!!!

Great birthday or anniversary gift

Call CCHS today: 233-4604

Boy, were we busy in June!!

June started out with an exhibit change from FUN IN THE SUN to Phase I of the traveling exhibit TILL THE COWS COME HOME. Phase II started two weeks later and will continue through October 14. (More information on this exhibit elsewhere in this Newsletter.) Archivist Mark Peihl developed a brochure for a canoe tour of historic sites on the Red River in conjunction with Riverfront Days June 8-10. Mark ended his spring lecture series with the program "Beerhead" which is the history of the saloon industry in Moorhead. Collections' Manager Pam Burkhardt attended the parade during the Comstock Centennial. Comstock was bustling, the parade was superb and the weather excellent! Pam spent part of Fathers' Day spinning wool for the residents and visitors at Villa Maria Nursing Home, Fargo.

The Bergquist Pioneer Cabin was open to the public during the Scandinavian Hjemkomst Festival June 21-23. About 100 people

attended the open house at CCHS's 1870 log cabin in north Moorhead. They were treated to coffee and pepparkaker (ginger cookies) as well as accordion music. Dewey Bergquist, a grandson of John Bergquist who built the cabin, was on hand to relate its history. Thank you to Ruth Franzen and members of the Swedish Society; the cabin committee and Dewey for their efforts.

The Historical Society booth at the Clay County Fair, June 21-23, was a success. Many people stopped by to view the photos from the CCHS King Wheat exhibit, the display of items from educational PAST trunks, and especially a selection of photos from the Flaten/Wange collection. A few people had questions about our county's history or wanted advice on caring for books or textiles. Dorothy Garven, a CCHS member in Barnesville for the summer, helped us in the booth all three days! It was most enjoyable visiting with her and her help was truly appreciated.

May/June Donors

MOORHEAD: Helen Hedelund, Steve Bremer, Jerry Haider, Audrey Rusness, Betty DeKrey, Jon Evert and Clay County Recorder's Office.

GLYNDON: Norman Larson and Mrs. Russell E. Kragness

HAWLEY: Thomas A. Fischer

BAKER: Francelia Iverson

B'VILLE: Diane Haugen

FARGO: Jane Matthees

May/June Artifacts

Some of the artifacts received are: School dress worn in the 1930s; Comstock History book and items from the Centennial; aerial photos of Moorhead; Civilian Conservation Corp uniform and handbook; flour, salt and sugar sacks; glass tumbler from a Baker store and scale from the post office; photos of the Smyser family; color photos of the 1989 spring flood on the Red River at Moorhead; photos of nurses at Northwestern Hospital and a graduation certificate from that hospital; bottle from I.W. Swenson, druggist of Hawley and a picture on glass and cardboard from Farmers Co-op Oil Co. of Barnesville.



A sleepy rabbit cuddles in the arms of a 4-H Club member exhibitor at the Clay County Fair.

Non Profit Org.
BULK RATE
U.S. POSTAGE
PAID
PERMIT NO. 494
MOORHEAD, MINN



CCHS - 1990 Membership Information

CCHS Membership

I would like to begin/renew my membership in the Clay County Historical Society. Please enter my membership in the category I have checked below:

- () INDIVIDUAL \$15.00
() FAMILY \$35.00

CCHS Membership Benefits

- FREE Admission to the Center
- Bi-monthly newsletter
- 25% discount on photo reproductions
- 10% discount on acid-free materials
- voting privileges
- invitation to the annual meeting/dinner and all CCHS events

Name: _____

ADDRESS: _____

Telephone: _____

Date Purchased: _____

Please list additional family members (family is considered: husband, wife and children now living at home, under the age of 18) for passes.

RETURN TO: Clay County Historical Society
P.O. Box 501
Moorhead, MN 56560
(218) 233-4604

Amount Enclosed: \$ _____