



CLAY COUNTY HISTORICAL SOCIETY

NEWSLETTER

VOL. XII NO. 1

CCHS RECEIVES STERN FOUNDATION GRANT FOR MICROFILM READER/PRINTER

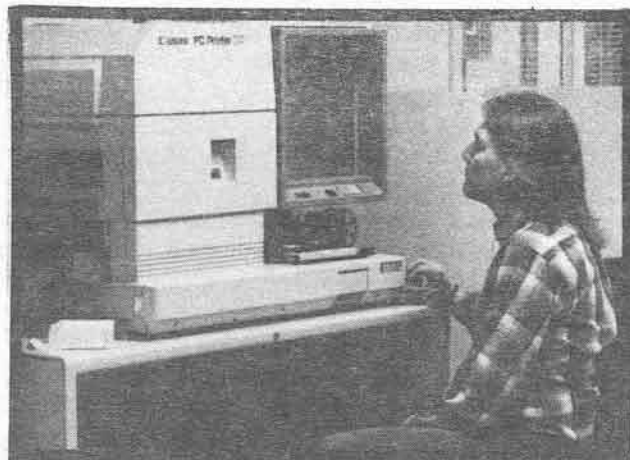
In January, the Alex Stern Family Foundation awarded the CCHS a grant of \$2000 to help purchase Canon PC-70 plain paper reader/prINTER. In purchasing this machine, CCHS matched the \$3946 grant from the Minnesota Historical Society to buy microfilm copies of newspapers, census records, fire insurance maps, etc. The reader/prINTER is needed to view and make copies from the microfilm.

Now, archival researchers can view and make copies of every available newspaper that was published in Clay County, all the naturalization records filed in the County's courts (indexed by surname!) and Sanborn fire insurance maps for Moorhead and Barnesville (see the article on the Sanborn maps in this issue).

We sincerely thank the Alex Stern Family Foundation and the other contributors who made this valuable addition to the archives possible. We are still seeking funds to completely pay for the machine. For more information please call 233-4604.

"CCHS ANNUAL MEETING SET FOR APRIL 3, 1989"

We would like to take this opportunity to invite you to the 1989 Annual Meeting held at the Heritage-Hjemkomst Interpretive Center, April 3, 1989. The night will begin with hors d'oeuvres at 5:30 and the banquet/program will follow at 6:30 p.m. The evening will consist of a short meeting/program, exhibit viewing, doorprizes and much more! Deadline for reservations will be March 27. Send your check with tickets (enclosed in newsletter) to the Clay County Historical Society, P.O. Box 501, Moorhead, MN 56560, or drop it off in the office. For more information call (218) 233-4604.



PRESIDENT'S MESSAGE

Dear Members:

In place of my usual comments for this issue of the newsletter, I have asked each board member to respond to the following question: "Why have you volunteered to help the Clay County Historical Society and why do you feel that the preservation and dissemination of history is important?" Some of their responses follow. Perhaps you would like to drop us a note with your comments on why you feel history is important.

Please mark your calendar, and make your reservation for the annual meeting April 3, 1989.

A special thanks to those members who decided to renew or rejoin the Society recently.

Sincerely,



Vernon A. Pederson

DAN SKOLNESS

Why I feel it is important to preserve and disseminate the history of Clay County: Because of the past, present and future. The past gave us memories of our ancestors, the ones who laid the foundation for our lives. They left many treasures for us to properly care for, including their wisdom. The present is a very important time for all of us. We may have 40 years to build our careers, but learning lessons from the past, we find that we have very precious few moments to teach our children the things that are most important to life. The future is full of promises. By studying the past we can look into the crystal ball of the future and hopefully make better long term decisions for all of us. (God willing.)

MERCEDES ROOS

Over ten years ago when new volumes of County History were being written, I discovered if my family records were to be included, I would have to be the writer. Immense research followed, and my family and small town's histories were preserved for posterity. About that time I also discovered four trunks packed with family mementos: My grandmother's Hallingdal folk dress, a box of letters over one hundred years old, my grandfather's immigrant suitcase and papers. My contacts with Clay County Museum began. The Museum then was in the Depot.

I am absolutely delighted today to see some of my family's mementos and clothes preserved at the beautiful Clay County Museum in the Hjemkomst Center. If we want to preserve our family and county records and artifacts, you and I must not leave them in our attics or basements but donate them to our Museum where they can be safe and properly stored for our children and future generations to see and enjoy.

MARY KNOPFLER

I spent many years getting ready for Ulen Centennial by doing the research for the book. At the time I had certain goals in mind knowing that the book would have to contain all of the history, not for just 100 years, but for about 130 years, as our first settlers were here in 1870 or 1871. The town records began in 1896. I went to CCHS and asked for their help getting information for those early years. They had many suggestions and many resources which helped me. I was amazed that all of the old newspapers were kept and preserved. I will always remember the joy

CCHS HAS A NEW VOLUNTEER

(cont.)

when I discovered Ole Ulen's obituary and proof that the railroad had come through the area in 1886. It was easy for me to decide to become a board member of CCHS. They had helped me in so many ways and I had to return the favor. I would guess that most people don't know what CCHS has to offer and my job in representing this area is to let them know.

SHERWOOD PETERSON

Being a resident of the county all my life and having an interest in historical things, it was an exciting opportunity to serve on the CCHS Board. My family and I are interested in antiques and old things and learning other ways of yester days. "The Good Ole Days". My first job on the farm was using horses and horse drawn equipment. So I do have some first hand experience to share with my family. I am ever thankful that someone in the past took the time and interest to save keepsakes of years ago so my sons can have a taste of other generations ways. One of our CCHS special projects has been the trunks shown to schools in the County. New ones are being completed as time allows. Please check these out. It is a pleasure to serve on the board and I encourage you to consider membership as well as serving on the board: they are both an opportunity. Check us out it may be something you may want to be a part of in the future.

If you would like to submit your comments on why you feel history is important, please write to:
Clay County Historical Society,
P.O. Box 501, Moorhead, MN 56560.

JEFF KROKE, originally from McVille, North Dakota, is presently volunteering for the Clay County Historical Society. He has a wife, Elizabeth, and a daughter, Kaia (2 1/2). Jeff recently returned to the North Dakota State University to pursue a degree in Public History. "I hope that working at CCHS will give me an idea of what my future will be like as a Curator in a small museum or historical society. The "real" balanced with the "ideal" which I learn in the classroom, will provide some of the experience I will need. But mostly I enjoy the artifacts: what they are, how they were used and the stories behind them. I think history should be brought to the people who were part of it and are making it right now. There is no better way than through local institutions like historical societies or small museums." Jeff is currently working on artifact processing and displays. He will be researching his own case display in the near future. Jeff volunteers about six hours a week.



WASHINGTON'S BIRTHDAY
February 22, 1989

CLAY COUNTY MUSEUM: TEMPORARY EXHIBITS

"Railroad Standards: Building Plans 1884-1916", an exhibit exploring the process of standardization in modern society, opens February 18, 1989. The group of architectural drawings, on loan from the Minnesota Historical Society, is from the engineering files of the Great Northern and Northern Pacific railroads. Rendered in pencil, india ink, and watercolor on starched linen, the blueprints depict everything from loco locomotives and tool boxes to depots and privies.

The development of standard designs for railway structures reflects the huge growth of railroads in the United States between 1884 and 1916. This growth and development led to both standard time zones and the color coding of stoplights. The exhibit suggests that the railroads' standardized ice-houses, watchmen's shacks, and water tanks foreshadowed the standardized gas stations, hotel chains, and fast-food establishments that render the outskirts of modern cities indistinguishable from each other. The exhibit will be supplemented by artifacts from the Clay County Historical Society Collection. In conjunction, Mark Peihl will be presenting "Stockwood Fill", March 2 and 3, at 7:30 p.m. in the Clay County Museum theater. The slide show explains why the railroad is up in the air east of Glyndon and takes a look at this major engineering feat.

"Let's Go Shopping" features an old store show case filled with plain and fancy goods from area

stores. Specific stores represented are de Lendrecie's in Fargo, Moody's in Moorhead (that's the way the price tags read!), the Andrew Johnson Store in Hawley, MN and the Jelsing/Ulven store in Dale. The time period ranges from the late 1880s to the early 1940s for selected artifacts.

"Moorhead: August, 1923" features photographs from our Flaten/Wange Collection. The negatives O.E. Flaten shot offer a unique view of what the city looked like that summer; a moment in Moorhead's past, frozen in time.

"An Ending and a Beginning", an exhibit which commemorates the 30th anniversary of the deaths of rock-n-roll stars Buddy Holly, Ritchie Valens and J.P. "The Bopper" Richardson and the beginning of the career of pop star Bobby Vee.

Holly and the others were on their way to play a concert at the Moorhead Armory when their plane crashed near Clear Lake, Iowa, February 3, 1959. Fargoan Robert "Bobby Vee" Veline began his career by filling in for the missing stars. The exhibit will be open until May 31, 1989.

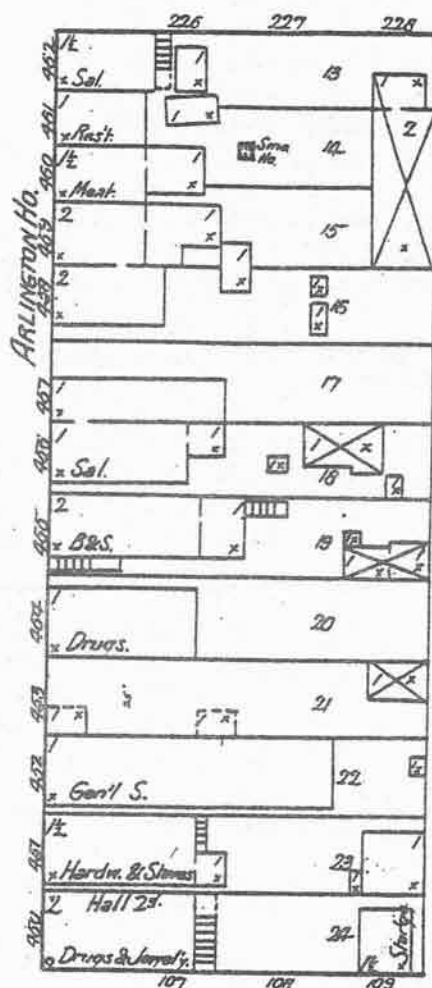


"TREASURE" MAPS IN CCHS ARCHIVES

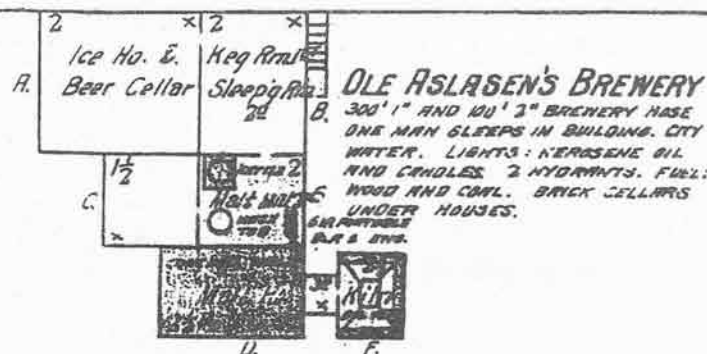
Among the archive's recently acquired microfilm are the Sanborn fire insurance maps for Moorhead and Barnesville. These highly detailed maps were drawn by the Sanborn Map Company to provide fire insurance companies with construction details for individual buildings, which are real treasures for researchers. They show the exact location of each building and each street, its dimensions, building materials used, number of floors and the building's function among other things. Updated every few years, the maps dramatically illustrate changes in the physical make up of the communities overtime. They are invaluable to anyone studying the history of these towns or individual businesses, buildings or homes. Moorhead and Barnesville were the only Clay County cities mapped by Sanborn. The Moorhead maps were drawn various years between 1884 and 1956. Barnesville's run from 1894 to 1929. Our purchase, of these maps, was made possible though a grant of state money from the Minnesota Historical Society.

SECOND

FRONT



THIRD



ABOVE: Eastside of Front Street in Barnesville 1894. Showing saloons, drug and hardware stores, a meat market and the Arlington Hotel. TO THE LEFT: Ole Aslesen's Brewery in Moorhead 1899. Located north of the Great Northern tracks near the Red River.

PRESERVING YOUR HEIRLOOM TEXTILES

This article is the first in a series on textile care at home. It represents only a small part of the entire conservation process recommended. For further information, call the museum or the textile department of a college near you. Textile care is not only for those valued heirlooms handed down for generations, but also for those "found" treasures you want to preserve for your own use.

PART I: Identifying the Problems.

There are many causes of degradation in a textile.

1. Air pollution by cigarettes, soot and kitchen grease.
2. Attack by insects, mice and mildew.
3. Poor storage conditions in attics, basements and closets.
4. Poor storage containers such as plastic bags and acid-filled paper and cardboard boxes.
5. Improper handling and displaying.
6. Disasters such as fire or flood.
7. Heat speeds degradation.
8. Light causes chemical damage.

Before you attempt ANY conservation of a textile, you need to know what it is made from. This means knowing not only the basic fabric, but also what each individual piece in the article is made from. This will usually call for a microscopic analysis of the fibers. Stains should also be noted at this time. For example: one dress in our collections is silk with three different lining materials, one

lace trim, one lace insert with its own lining material, two facing materials, ribbon, straw stiffener inside the collar, metal stays, metal stay covers, hooks and eyes, a buckle and tape reinforcements. Such a garment might also have embroidery, feathers, jewelry, beads, buttons or artificial flowers.

A few problems this garment represents is the possibility of the silk shredding during cleaning, fabric dyes running, embroidery dyes running, metal rusting, buttons and beads dissolving or breaking.

What can you do now?

1. Vacuum the item using a plastic screen to prevent damage from suction.
2. Air the item outdoors in a shady spot on a spring or fall day free of insects and moisture.
3. Remove potential causes of damage such as plastic bags, cardboard or wooden backs on framed items, and ANY paper and cardboard used around the textile.
4. Remove delicate items from heavy piles and unfold anything that is folded.
5. Make sure items or hangers have proper support and padding.

PART II will deal with cleaning.

PART III will discuss storage and display.

By Pam Burkhardt,
Collections Manager

DINOSAURS RETURN TO THE CENTER!

"Dinosaur Mysteries . . . A Case of Extinction" February 4 - May 29, 1989. Dinosaurs from Dination International Corporation. Center hours are Monday - Wednesday & Saturday, 9 a.m. - 5 p.m.; Thursday & Friday 9 a.m. - 9 p.m.; and Sunday 12 noon - 5 p.m.

Step back into time, 65 million years ago, where dinosaurs great and small inhabited the earth. Some plant eaters, other meat eaters; some lumbering giants, others swift and agile but, somehow, someday these creatures die in a mysterious death.

What led to the death of the dinosaur?

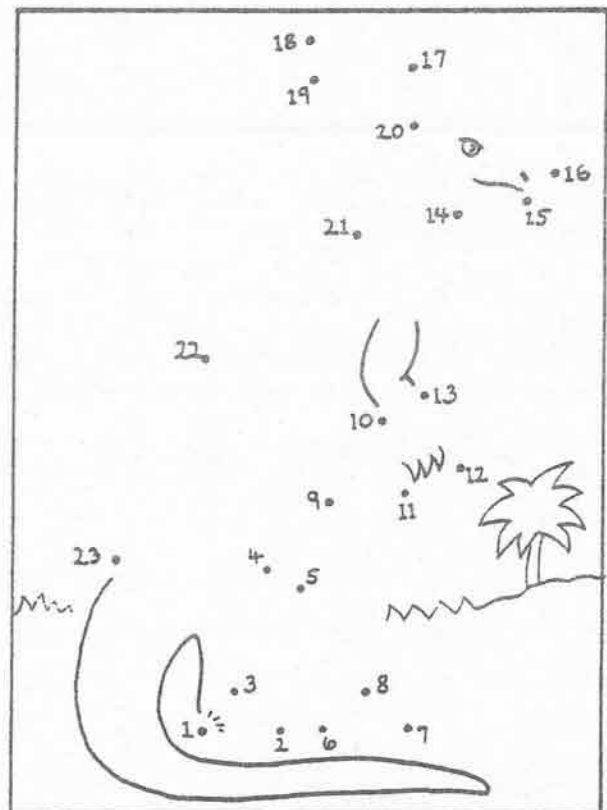
Did those fascinating creatures die from an ice age? The latest theory reported in the December 18, 1988 issue of NEWSWEEK is that, "a giant asteroid several miles in diameter hit earth, tossing so much dust and smoke into the atmosphere that the climate cooled, vegetation withered and the dinosaur starved." Is it possible, a global catastrophe could cause sudden extinction?!

As the detective on the "Case of Extinction", you will be given clues, as you go through the exhibit, about the life of the dinosaur and possible reasons that could explain the mysterious death of those creatures. Although the mystery may never be discovered why these creatures suddenly died out, we can attempt to piece together the traces that have been left behind. How do you think they died? You will be able to vote, at the end of your journey, on the theory you think best supports the reason of why the dinosaurs are no longer living.

The most popular theory in the Fargo-Moorhead area will be announced on local media at the end of the exhibit.

Robotic dinosaurs on exhibit include: Triceratops and Baby, Stegosaurus, Brontosaurus, Pachycephalosaurus, Parasaurolophus and Tyrannosaurus Rex. A life size Tyrannosaurus leg and head; and the Dimetrodon, (sail lizard) which will show how the robotic creatures work.

In the "Dino Den": Question and Answer Flip Charts, Puzzles, Computer Games, Books, Videos, A Fossil Dig and more, to educate and entertain young and old alike.



Parasaurolophus has a strange-looking head. Connect the dots 1 through 23 and see it for yourself.

Taken from "The Little Dinosaur Activity Book" by Anna Pomaska, available in the Heritage Gift Shop.

DISPLAYS IN THE COUNTY

Moorhead Library

The current display 'TIS THE SEASON will close March 2 and open with JUST A WHITTLE BIT! featuring a variety of hand carved artifacts. It will run until May 4.

HAWLEY LIBRARY

THOSE FAR AWAY PLACES will close March 8 to be replaced with THOSE WONDERFUL TOYS which will run until May 10.

ULEN-HITTERDAL HIGH SCHOOL

The display FROM HEAD TO TOE closes February 28. It will be replaced with a popular display that appeared briefly at Hawley last year entitled IN MY MERRY OLDSMOBILE. It features artifacts and photos on driving in early days and will run until April 25.

VIKING MANOR, ULEN

DINNER WAS SERVED will also close February 28 and open with LET'S MAKE MUSIC with drum sticks, accordion, clarinet, etc. as well as a selection of sheet music from our collections. It will run from February 28 to April 25.

HITTERDAL SENIOR CENTER

One of the favorite displays WHAT IS IT? opened on January 20 and will close March 17. It has wooden, plastic and metal items. (You didn't think we'd tell you what was in this one, did you?) The next display will be entitled BUTTER AND EGGS. It will open March 17 and close May 10.

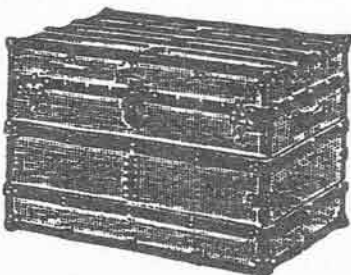
These displays are part of the Clay County Historical Society Outreach Program that provides displays as well as programs throughout Clay County libraries, nursing home/care centers, senior citizen centers, etc. For more information call 233-4604.



DECEMBER/JANUARY DONOR

Doris Heroff, Alma Wije, David Karch and Meredith Bloomquist all of Moorhead.

Paul Pawlowski, Pelican Rapids, MN.



LINCOLN'S BIRTHDAY
February 12, 1989

UPCOMING EVENTS AT THE CENTER

"Dinosaur Mysteries . . ." is co-sponsored by the City of Moorhead, The Forum, Radisson Hotel Fargo, Eberhart Moving & Storage and U.S. West Communications. The above sponsors will be hosting six, \$5.00 FAMILY DAYS on March 10 & 11, April 14 & 15 and May 12 & 13.

COMMUNIVERSITY AT THE CENTER

February 19, 4:30-6:30 p.m.--
DINOSAUR DISCOVERIES. Dr. Ron Nellermeoe from the biology faculty at Concordia presents a program on the similarities between the dinosaurs and modern birds and, on whether they were warm-blooded or cold-blooded.

February 26, 4:30-6:30 p.m.--
DIGGING DINOSAURS. Rev. Ken Olson, Museum of the Rockies paleontology research associate discusses how Dinosaur remains have been discovered, excavated, and preserved, and will display teeth and bones of these huge reptiles from his collection.

MSU PLANETARIUM

March 19 - May 22--THE DEATH OF THE DINOSAURS. Sundays at 2, 5 & 7 p.m., Monday evenings at 7 p.m. The show takes a look at some cosmic evidence that may explain why the dinosaur--and half of all other living creatures on earth--became extinct over 64 million years ago.

NOTE: 25% discount on admission with Center admission ticket!

DINOSAURS, DINOSAURS

A MESOZOIC MUSICAL! 1:30 p.m. Matinees at the FARGO THEATRE. The 40 minute show is a blend of science and entertainment, including audience participation. Concepts of fossilization, evolution and extinction will be presented by John Burstein, best known for the Slim Goodbody show. Tickets \$2.

SHADOWS OF THE PAST

May 12 at 7:00 p.m. and May 13 at 10:30 a.m. & 2:00 p.m.

Imagine a creature and make it come alive! Explore the characteristics of the dinosaurs through shadow puppetry. Parents are welcome to join their children. Free with admission. Limited entrance.

FOSSILS: CLUES TO THE PAST

This National Geographic film shows what fossils can tell us and how scientists determine their age. Every Thursday & Friday evening at 7 & 8 p.m. 23 minutes. Rooms A, B & C.

Y	F	D	E	B	G	T	Z
T	V	I	J	K	O	C	G
D	I	N	O	S	A	U	R
U	W	O	F	X	D	Z	Y
V	E	S	G	A	I	N	T
B	N	A	T	M	N	J	X
L	R	U	W	Y	O	Z	K
F	G	R	V	L	S	C	E
D	I	N	O	S	A	U	R
L	H	Q	K	V	U	H	P
W	J	X	P	M	R	K	C

The word dinosaur is hidden up-and-down or left-to-right three more times in the puzzle above. When you find the word, draw a line around it.

Taken from "The Little Dinosaur Activity Book" by Anna Pomaska, available in the Heritage Gift Shop.

CLAY COUNTY HISTORICAL SOCIETY

ANNUAL MEETING

PROGRAM AND BANQUET

HERITAGE-HJEMKOMST INTERPRETIVE CENTER

MOORHEAD, MN

APRIL 3, 1989

5:30 P.M.

PLAN TO ATTEND!!!

RESERVATIONS MUST BE MADE BY MARCH 27, 1989

SEND TO: CLAY COUNTY HISTORICAL SOCIETY
BOX 501
MOORHEAD, MN 56560

OR CALL: (218) 233-4604

Please check your choice of Entrée:

- ☐ Asparagus Stuffed Chicken Breast
☐ Roast Filet

1989 ANNUAL MEETING BANQUET
CLAY COUNTY HISTORICAL SOCIETY
April 3, 1989
5:30 Social Hour
6:30 Banquet
HERITAGE-HJEMKOMST INTERPRETIVE CENTER
Moorhead, MN
\$7.50 per person
Make check payable to:
CLAY COUNTY HISTORICAL SOCIETY

Please check your choice of Entrée:

- ☐ Asparagus Stuffed Chicken Breast
☐ Roast Filet

1989 ANNUAL MEETING BANQUET
CLAY COUNTY HISTORICAL SOCIETY
April 3, 1989
5:30 Social Hour
6:30 Banquet
HERITAGE-HJEMKOMST INTERPRETIVE CENTER
Moorhead, MN
\$7.50 per person
Make check payable to:
CLAY COUNTY HISTORICAL SOCIETY

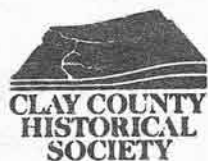
ATTENDANCE TOPS 100,000 AT THE CENTER!!!

We are pleased to announce that the attendance at the Center in 1988 was 105,175. This compares very favorably with the 1987 attendance of 62,963. We would like to see these figures double in 1989.

Everyone who has had anything to do with the Center should be very proud of its accomplishments. This includes the original donors, Heritage Club members, as well as, numerous others that have given support in many ways.



The Heritage Shop has available a nice selection of quality gifts, as well as dinosaur items.



CLAY COUNTY
HISTORICAL
SOCIETY
P.O. BOX 501
MOORHEAD, MINN 56560

Non Profit Org.

BULK RATE

U.S. POSTAGE

PAID

PERMIT NO. 494

MOORHEAD, MN

CCHS - 1989 Membership Information

CCHS Membership

I would like to begin/renew my membership in the Clay County Historical Society. Please enter my membership in the category I have checked below:

- () SPECIAL* \$2.00
- () INDIVIDUAL \$15.00
- () FAMILY \$25.00
- () PATRON \$50.00

*Persons residing in a nursing/retirement home.

CCHS Membership With Annual Pass

I would like to begin/renew my membership in the Clay County Historical Society. Please enter my membership in the category I have checked below:

- () INDIVIDUAL \$25.00 Includes One Individual Annual Pass
- () FAMILY \$50.00 Includes One Family Annual Pass
- () PATRON \$75.00 Includes One Individual Annual Pass
- () LIFE \$300.00 Includes One Individual Annual Pass
- () COUPLE LIFE \$500.00 Includes One Family Annual Pass
- () BUSINESS \$100.00 Includes One Individual Annual Pass