



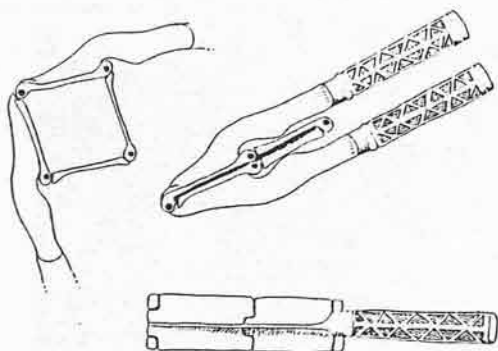
CLAY COUNTY HISTORICAL SOCIETY



Newsletter

1988

December-January



WHAT IS IT???????

One of the artifacts featured in the Winter exhibit Whatzit section is a tool found by contractor Herman Magnusson in the walls of a building he razed in the flood area in Moorhead in 1964. This tool appeared in a 1965 "Forum" article and at the Clay County Fair, but none of the guesses for its use are consistant with its construction.

The iron tool has hollow handles, weights about 1 lb., is $9\frac{1}{4}$ " long and opens $1\frac{3}{8}$ " wide at the hinges. Any guesses on its use would be appreciated.

WINTER EXHIBIT: FAVORITES AND WHATZITS

When our museum was in its previous locations, everything which could be displayed was set out for the public. Individuals and families enjoyed visiting the museum to see what they or their relatives had donated.

But museum practices have made great strides in the past few years. We now know that constant exposure to light, handling and air-borne pollutants will damage fabrics, painted artifacts, even wood and metal. Museums across the country are limiting what they exhibit, rotating pieces in and out of safe storage so the pieces can be seen and yet get the care they deserve.

Our winter exhibit features museum favorites and a few unidentified items. The high-wheeled bicycle and the horn chair are the most popular of the over 40 artifacts on display. The exhibit will be on display through March 18.

Barnesville Heritage Center Opens



The Barnesville Area Heritage Society held an open house at their new Heritage Center in the Historic P.E. Thompson house November 5. Over 300 people enjoyed baked goods and Scandinavian delicacies and had a chance to tour the home. Thompson, Barnesville's Postmaster and first mayor, is often called the Father of Barnesville. The 1890's house is listed on the State and National Register of Historic Places.

The Heritage Society, which acquired the house in 1984, has a three phase plan for restoring it and grounds for local musical and arts events. The first phase involves fixing the roof and porch and landscaping the grounds. Later the main floor of the house will be restored then the second floor.

The Humbolt 4-H will be helping with the first phase. Also supporting the project are the American Legion and VFW, the Galaxie Supper Club, the Fargo Eagles and the people of Barnesville. The society also has many volunteers helping out including a number of knowledgeable senior citizens. If you live in or near Barnesville and would like to help, call Pearl Quinnild in Barnesville.

The Heritage Society was formed in 1982 and meets four times a year. The officers are Pearl Quinnild, Paul Rice and Jane Harrison. We say "Hats off to the Society" and we offer our congratulations and best wishes to this valuable project.



SERVICE FLAG

THE SEARCH IS ON !!!

The search for a new director for CCHS is still underway. Due to unforeseen circumstances, we changed the deadline for applications to the 15th of January. We are looking for someone to write grants, travel through the county getting to know our supporters better, someone that has a good handle on fund raising, etc.

Board members are reviewing applications. The CCHS membership will be notified when the new director has been selected.

WANTED ! ! ! !

A WW I or WW II service flag for the Fall Exhibit. This flag is a white cloth with a wide red border and a star in the center. The star may be blue, silver, gold over silver or gold. It signified that the household had a son, husband, father etc. in the service. Donations preferred or 4 month loan.

BOARD OF DIRECTORS

Marth Holsen-Pres. - Moorhead
Mercedes Roos-V.Pres- Hawley
Beth Iverson-Sec.- Barnesville
Vern Pederson-Treas.- Moorhead
Norman Bjorndahl- Hawley
Willis Kingsbury - Moorhead
Dan Skolness - Glyndon
Sherwood Peterson- Baker
Mary Knopfler - Ulen
Dr. Michael Michlovic- Moorhead
Loren Helmeke - Georgetown

STAFF

Pam Burkhardt - Collections Manager
Mark Peihl - Archivist
Karen Meidinger - Secretary
Donna McMaster - Programming

MUSKODA FILL

The next time you're on highway 10 east of Glyndon, you might want to notice the Burlington Northern Railroad line $\frac{1}{4}$ mile south of the highway. You'll find that it's way up in the air; about 60 feet up in fact. Why is this?

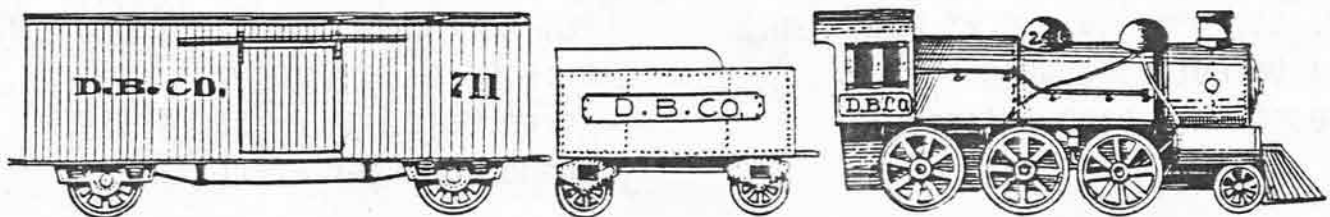
The Red River Valley appears to be an ideal place to build a railroad: long, flat stretches, no huge rivers to cross; however, geology here threw the engineers an ironic curve. This grade - The Muskoda Fill, named for a nearby railroad station was the result.

When the glaciers melted at the end of the ice age 10,000 years ago, the melt waters formed Glacial Lake Agassiz, covering what is now the Red River Valley. The Buffalo River carried tremendous amounts of this dirty, sandy water into the lake. This debris formed Broad Delta near what's now the Buffalo River State Park. As the lake level lowered, waves washed the western edge of the delta into a steep slope.

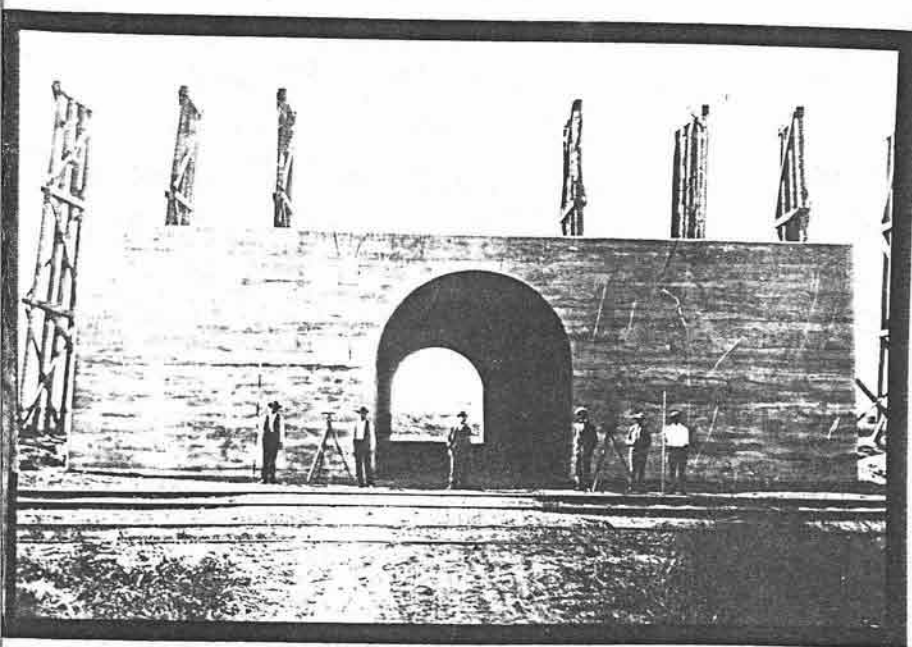
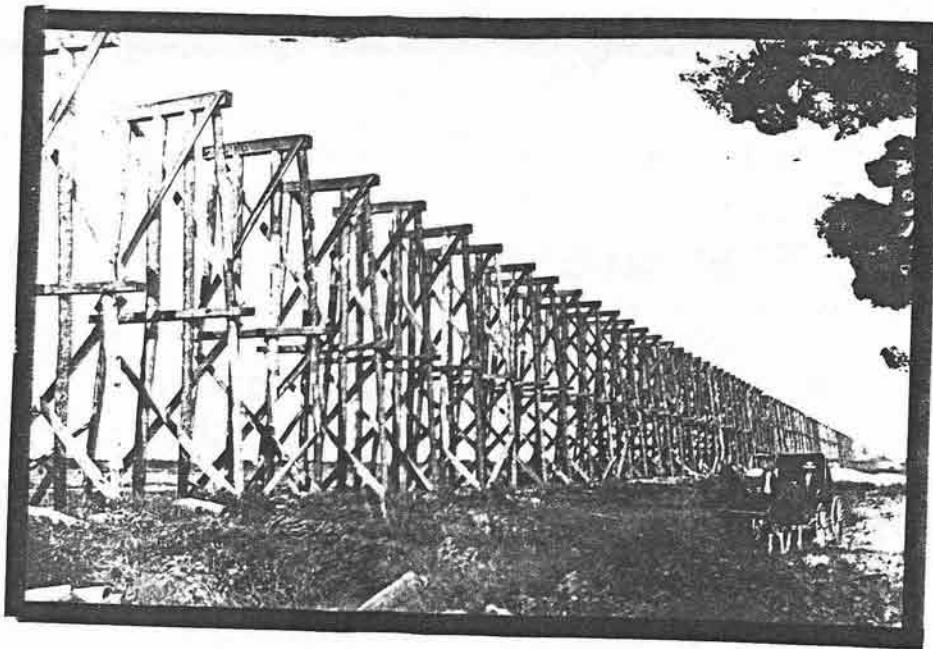
When the Northern Pacific Railroad built their line to Moorhead in 1871, they had to figure out how to get their eastbound trains up over this "cliff". They built a slope to ease the trains out of the valley. It took two locomotives to pull a train up this slope.

In 1906, the railroad decided to build a gentler grade: they erected a wooden trestle $4 \frac{3}{4}$ miles long and covered it with dirt. This was a tremendous engineering feat for its day and very expensive (4,000,000 1906 dollars were reportedly spent). At least one man died during construction. But when it was finished the railroad could pull a heavier train out of the valley with one engine.

Although it took nearly 2 years to build, it was considerably longer before the grade could be used regularly. Again, geology bedeviled the engineers. Lake Agassiz's floor was soft clay. The trestle was too heavy for the ground to support. It twisted, sank, and squished up earth on either side like toothpaste. It took years for the fill to stabilize into the fine grade it is today.

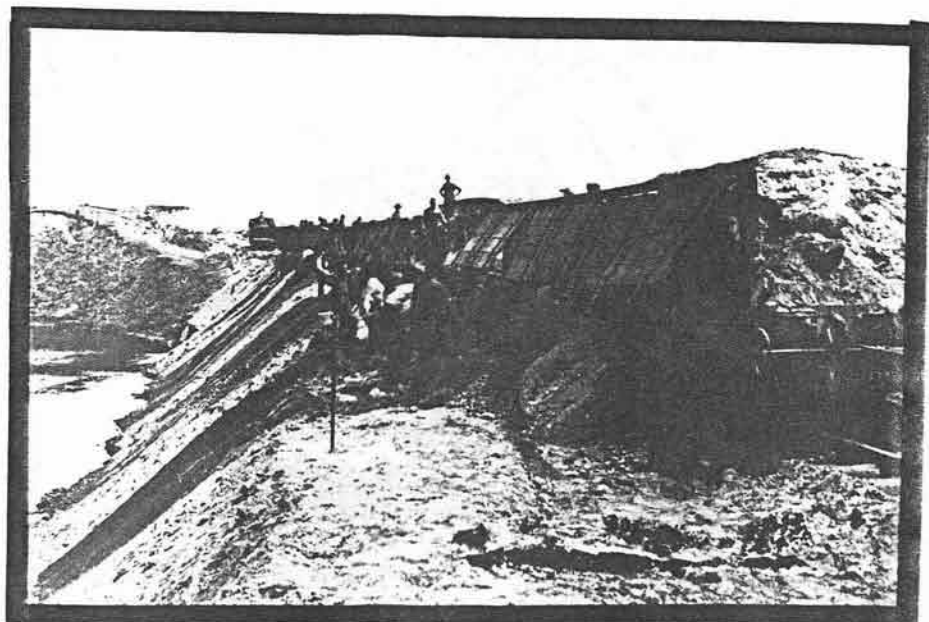


Building the Muskoda Fill re-
quired building a wooden trestle
4 3/4 miles long.



Railroad engineers stand proudly
before their concrete overpass on
State Highway 9. Unfortunately,
it was too heavy for the soft
ground and sank. It had to be
dynamited apart and rebuilt.

Dirt used to cover the trestle
was loaded onto special cars.
They were driven out onto the
trestle, their sides were opened
and the dirt dumped out.



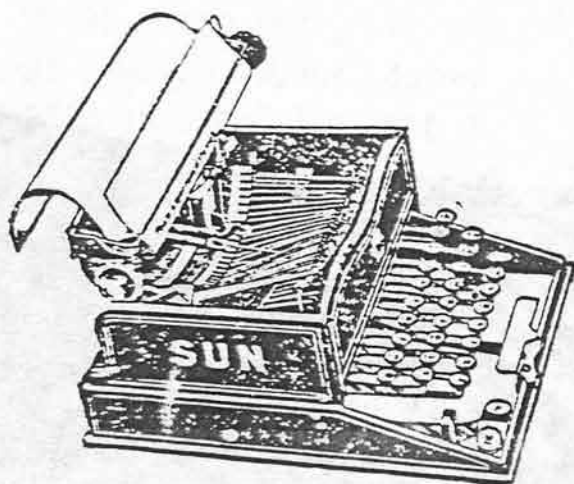
NEW SECRETARY AT CCHS!!!

In October, we hired Karen Meidinger as the new CCHS secretary. She has successfully completed three months. Karen is from Wishek, N.D. where she graduated in 1985. She has attended Moorhead Tech and is currently taking a class in the evening there.

Karen grew up on a farm and enjoys going back for some relaxation on the weekends occasionally.

Karen also has a brother and three sisters. Some of her favorite past-times include: playing piano, cross-stitching, being outdoors, and spending time with family and friends.

Currently, Karen is working on teaching the rest of the staff basic computer skills; preparing an Office Procedures Manual and just keeping up with all the day to day transactions.



July - December Donors

Moorhead: Marie Daellenbach, Leonor Sillers, James Ellingson, Bernard Johnson Estate, City of Moorhead, Donna McMaster, Lloyd Paulson, Virgil Tonsfelt, Les Wahl, FM Camera Club, Roy Videen, Ruth Swanson, Town and Country Garden Club, Eva Felde, Roy Mathison, Doris Eastman, Thornley Wells, Tom Hall.

Barnesville: Esther Heggen.

Georgetown: Loren Helmeke.

Baker: Mrs. Fred Miller.

Rollag: Hartvig and Mabel Nelson.

Hawley: Lester Randall, Norman Bjorndahl.

Fargo: Dr. H. Allen Ohrt, Bill Leigh, Doron Smith, Lorraine S. Helmeke, Mark Peihl, L.W. Smith, Harold "Lindy" Lindgren and wife Violet.

Brooklyn Park, MN: Eunice Pitmon.

Hope, ND: Steele County Historical Society.

Anaheim, CA: Harold Reed.

Anonymous

CHUCK CARPENTER LEAVES CCHS BOARD



Recently, we were saddened to receive Chuck Carpenter's resignation from our Board of Directors. During Chuck's years on our Board, he has been an effective and creative force. Whenever something needed to get done, Chuck was always there ready to help. He's a good friend and we'll miss him. Willis Kingsbury, former HHIC Director, has been named to replace him. We are looking forward to working with Willis again.

EDYTHE KLOKSETH, VOLUNTEER TAKES TIME OFF

One of our loyal volunteers, Edythe Klokseth of Moorhead, will be taking some time off for a few months this winter.

Edythe has spent nearly every Tuesday afternoon at the information desk in our permanent exhibit area greeting visitors and keeping an eye on things. She's also been busy indexing Hitterdal's centennial book, Clay County Illustrated and Jim Fay's scrapbooks. Fay wrote a "This Date in History" column for the Moorhead Daily News. His clippings form a sort of Readers Digest condensed version of the Daily News. The index is a handy resource for researchers. Thanks, Edythe. We look forward to seeing you in the spring!



Dinosaur Daze

The HHIC's next exhibit is "Dinosaur Daze" which runs from February 6 - April 26, 1988. The first of the two-part exhibit displays fossils from the Milwaukee Public Museum and University of North Dakota. The second part slated to open March 22 features half- to full-scale models of six dinosaurs that move and roar. Explore the myth and reality of the dinosaur in art and participative displays in Heritage Hall.



P.O. BOX 501
MOORHEAD, MINN 56560

Non Profit Org.

BULK RATE
U.S. POSTAGE

PAID

PERMIT NO. 494
MOORHEAD, MN

1988 Clay County Historical Society MEMBERSHIP INFORMATION

If you are interested in beginning, renewing or giving someone a gift membership to the Clay County Historical Society, the following information is just for you!

With Annual Pass

- | | | |
|-----------------|----------|--|
| () Individual | \$25.00 | (includes 1 Annual Pass) |
| () Family | \$50.00 | (includes 1 Family Annual Pass) |
| () Patron | \$75.00 | (includes 1 Individual Annual Pass) |
| () Life | \$300.00 | (includes 1 Individual Annual Pass every yr) |
| () Couple Life | \$500.00 | (includes 1 Family Annual Pass every yr) |
| () Business | \$100.00 | (includes 1 Individual Annual Pass) |

The Life and Couple Life memberships are one time memberships that are paid for life.

Without Annual Pass

- | | |
|----------------|---------|
| () Individual | \$15.00 |
| () Family | \$25.00 |
| () Patron | \$50.00 |

Life, Couple life, and Business membership rates - same as above.

For more information write or call CCHS at
CCHS, Box 501, Moorhead, Minn. 56560 (218)233-4604.